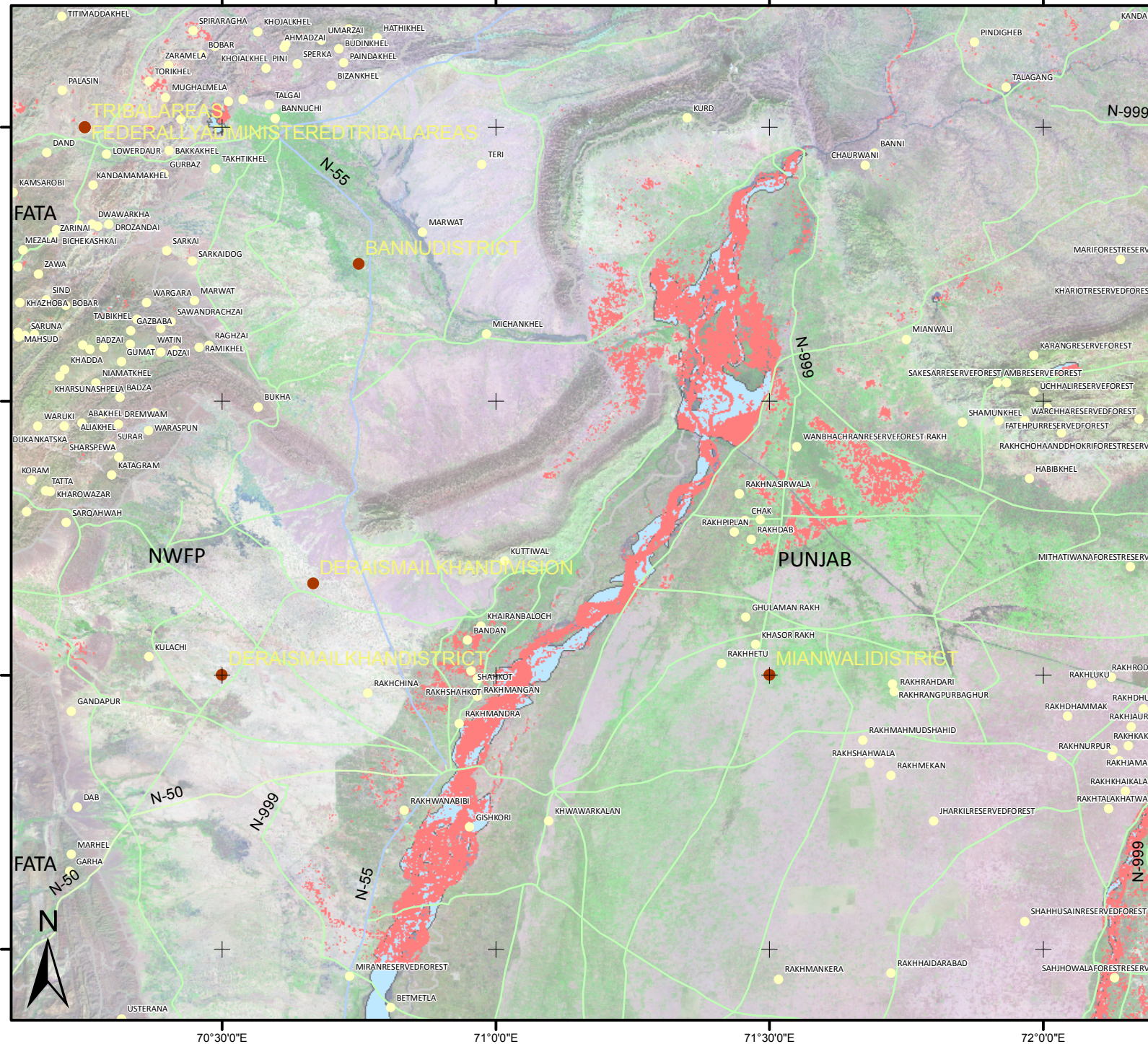



# Overview of Flood Inundation Map for the NWFP and PUNJAB Province, Pakistan



## Primary Source



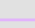
Satellite Data used : PALSAR - ALOS  
Date : 05 August 2010

 Flood Inundation Areas

Overview of Flood Inundation Map for the NWFP and PUNJAB Province This map presents the flood inundated areas over the affected Provinces of NWFP and Punjab, Pakistan following recent heavy monsoon rains. This analysis is based on post-disaster satellite imagery collected by PALSAR - JAXA ALOS Data on 05 August 2010. Please note that the exact limit of the flood waters is uncertain due to the coarse spatial resolution of the satellite sensors used for this analysis. This analysis has not yet been validated in the field. Please send ground feedback to MENRIS Division, ICIMOD.

## Secondary Source

### Infrastrutture layer:

-  Locality
-  Administrative Regions
-  Road Type
-  Provinces

### FAO Land Cover

-  Water bodies

### Satellite Data

Landsat ETM+ N-42-30.sid

Map Prepared



Satellite Data Copyright

