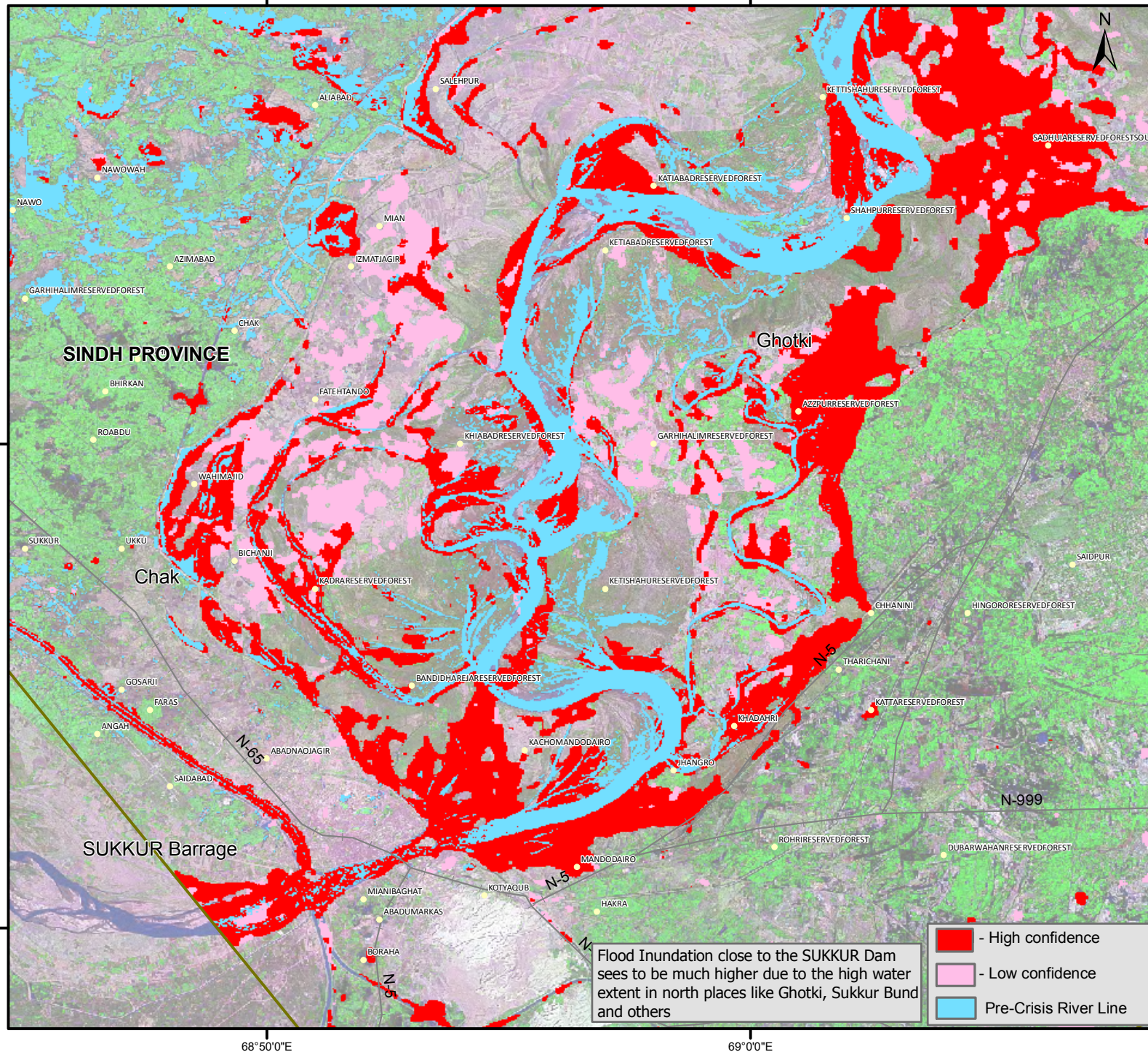


# Flood Inundation map [SUPARCO GRID-4] for the SINDH Province, Pakistan



Flood Inundation close to the SUKKUR Dam sees to be much higher due to the high water extent in north places like Ghotki, Sukkur Bund and others

- High confidence
- Low confidence
- Pre-Crisis River Line

## Primary Source

Satellite Data used :

After Crisis

- AWiFS - IRS P6 31 July 2010
- AVINIR - JAXA ALOS 05 August 2010

Before Crisis

- ETM+ - LANDSAT 2002/2003

Overview of Flood Inundation Map for the Sindh province. This map presents the flood inundated areas for the grid suggested by SUPARCO, Pakistan following recent heavy monsoon rains. This analysis is based on pre and post-disaster satellite imagery collected by IRSP6-AWiFS data and AVINIR – JAXA ALOS. Floods were classified into high and low confidence using spectral differences and classification method. Please note that the exact limit of the flood waters is uncertain due to the coarse spatial resolution of the satellite sensors used for this analysis. This analysis has not yet been validated in the field. Please send ground feedback to MENRIS Division, ICIMOD.

## Secondary Source

### Infrastrutre layer:

- Locality
- Administrative Regions
- Road Type
- Provinces

### Satellite Data (background)

Landsat ETM+ N-42-25

Map Prepared

**ICIMOD**

Satellite Data Copyright

