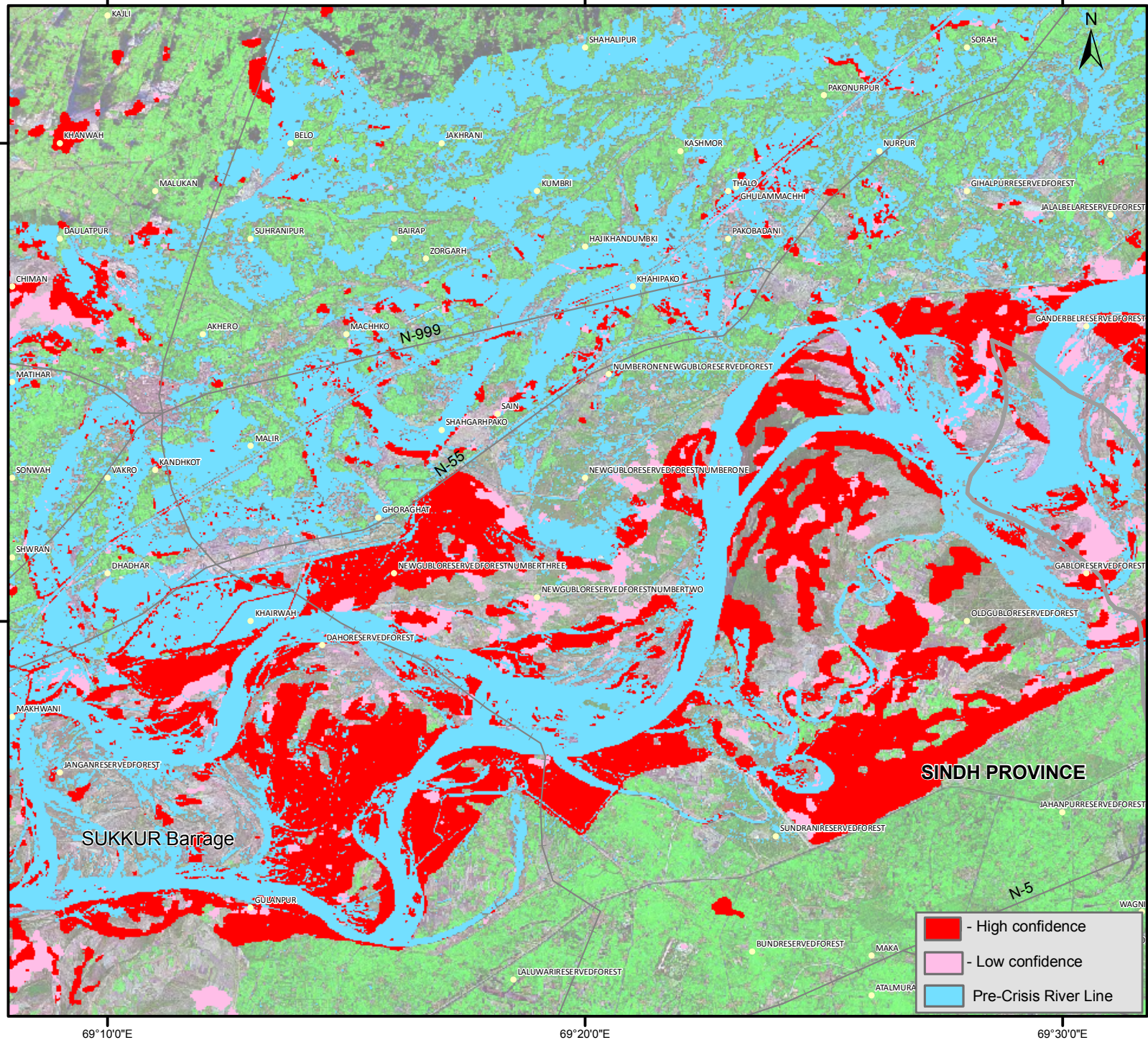


Flood Inundation map [SUPARCO GRID-4] for the SINDH Province, Pakistan



Primary Source

Satellite Data used :

After Crisis

AWiFS - IRS P6 31 July 2010

AVINIR - JAXA ALOS 05 August 2010

Before Crisis

ETM+ - LANDSAT 2002/2003

Overview of Flood Inundation Map for the Sindh province. This map presents the flood inundated areas for the grid suggested by SUPARCO, Pakistan following recent heavy monsoon rains. This analysis is based on pre and post-disaster satellite imagery collected by IRSP6-AWiFS data and AVINIR – JAXA ALOS. Floods were classified into high and low confidence using spectral differences and classification method. Please note that the exact limit of the flood waters is uncertain due to the coarse spatial resolution of the satellite sensors used for this analysis. This analysis has not yet been validated in the field. Please send ground feedback to MENRIS Division, ICIMOD.

Secondary Source

Infrastrutre layer:

- Locality
- Administrative Regions
- Road Type
- Provinces

Satellite Data (background)

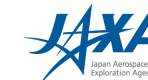
Landsat ETM+ N-42-25

- High confidence
- Low confidence
- Pre-Crisis River Line

Map Prepared

ICIMOD

Satellite Data Copyright



69°10'0"E

69°20'0"E

69°30'0"E