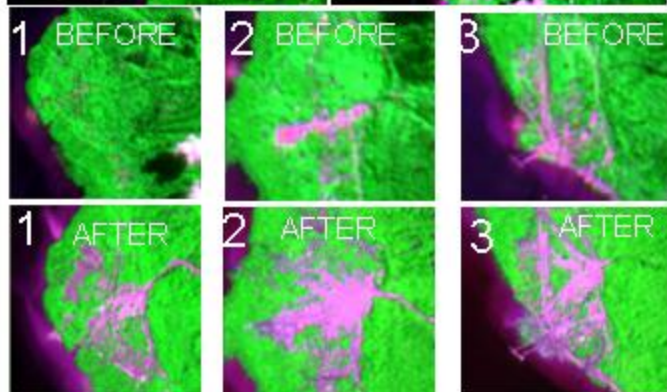
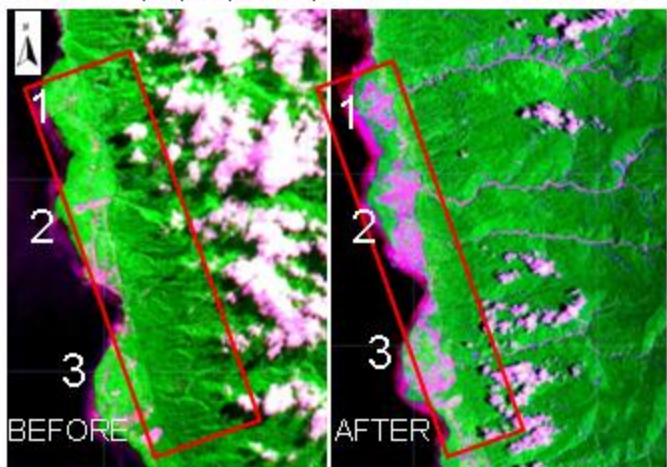


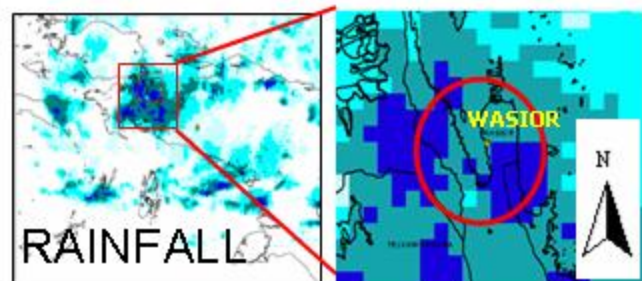
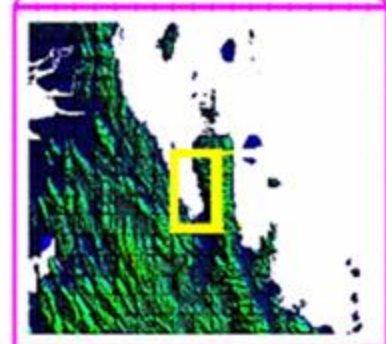
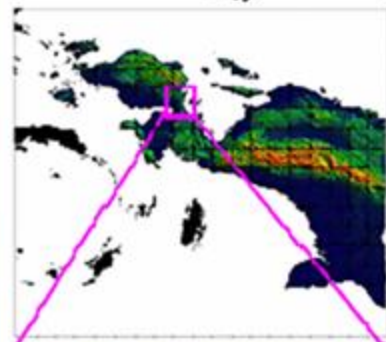
FLASH FLOOD IN WASIOR TELUK WONDAMA DISTRICT - PAPUA PROVINCE (03 – 04 OCTOBER 2010)



SPOT-2 (09/07/2009) SPOT-4 (12/10/2010)

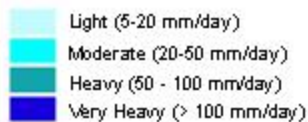


INSET IMAGE



**QMorph DATA
Oct 3, 2010**

Legend Rainfall



EXPLANATIONS

Based on the ALOS AVNIR, FORMOSAT and SPOT Data, it is shown the damaged area caused by flash flood from after disaster data. The QMorph rainfall data shows very heavy rainfall (> 100 mm/day) occurred during Oct 3, 2010 which triggered the flash flood in Wasior Papua.

ALOS AVNIR (10/08/2009) and FORMOSAT (13/10/2010) provided by Satellite Asia, copyright JAXA

SPOT (09/07/2009 and 12/10/2010) provided by LAPAN

QMorph Data (03/10/2010) from NCEP NASA

DEM SRTM 90m from USGS

Further processing applied by:

Remote Sensing Applications and Technology Development Center
Indonesian National Institute of Aeronautics and Space (LAPAN)

