



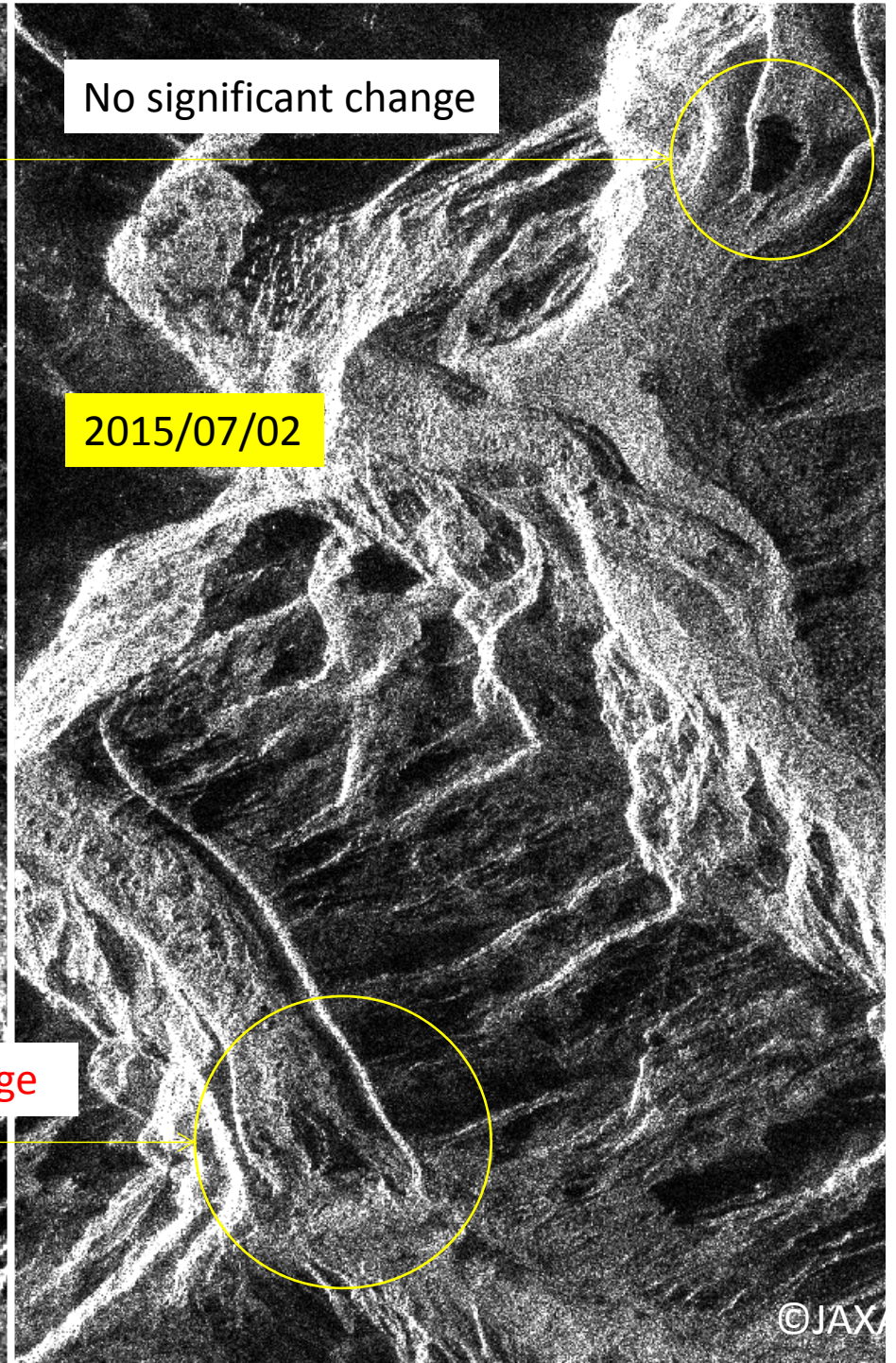
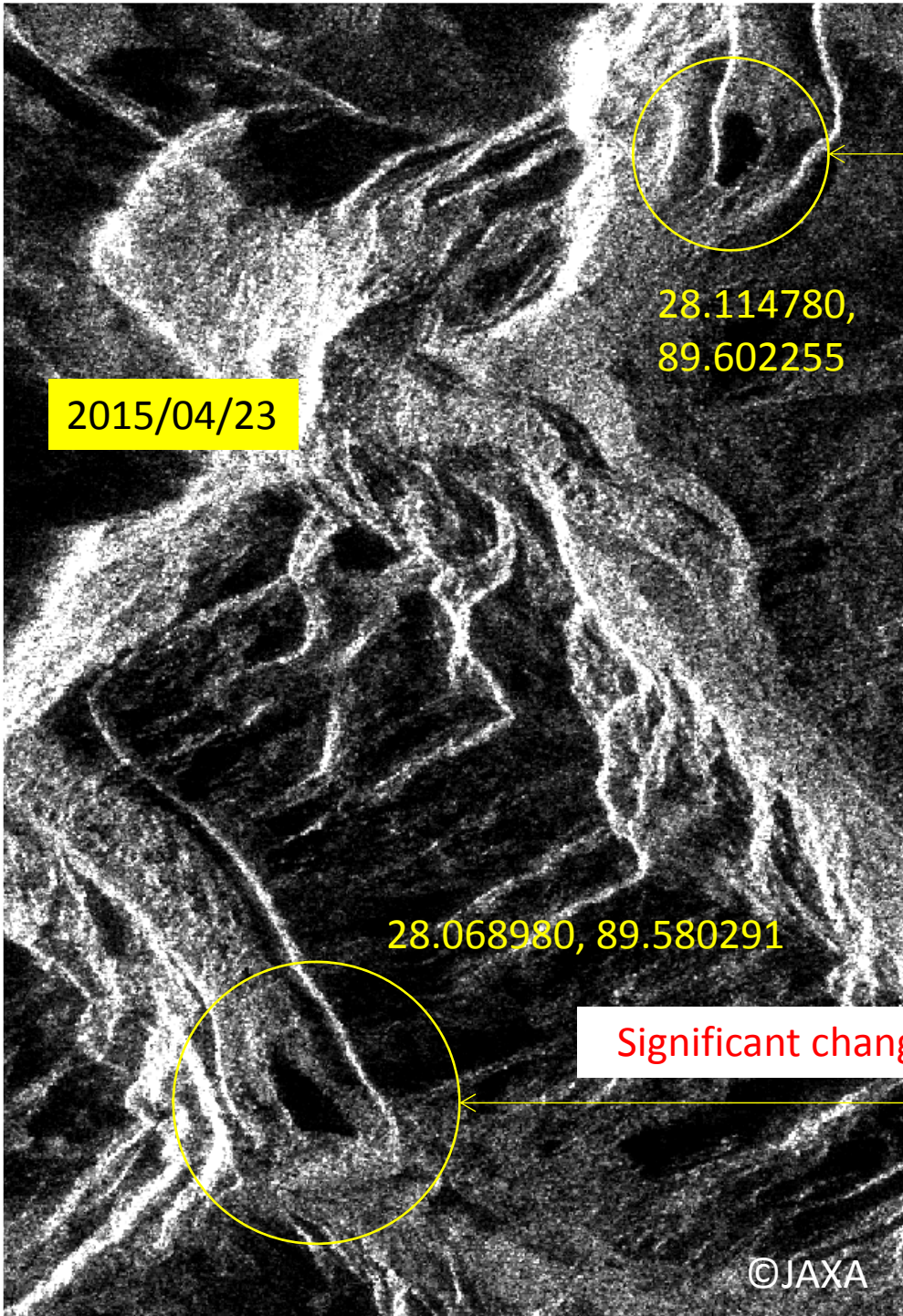
Brief Analysis of Glacial Lake Outburst Flood (GLOF) in North-West Bhutan, 28 June 2015

Japan Aerospace Exploration Agency

Remote Sensing Technology Center of Japan (RESTEC)

Utilized Data

| | Pre | Post |
|------------------|-----------------|------------|
| Satellite/Sensor | ALOS-2/PALSAR-2 | |
| Observation date | 2015/04/23 | 2015/07/02 |
| Observation mode | SM3 (F2-6) | SM1 (U2-8) |
| Polarization | HH+HV | HH |
| Off nadir angle | 36.2 deg. | 35.4 deg. |
| Orbit direction | Descending | |
| Beam direction | Right | |

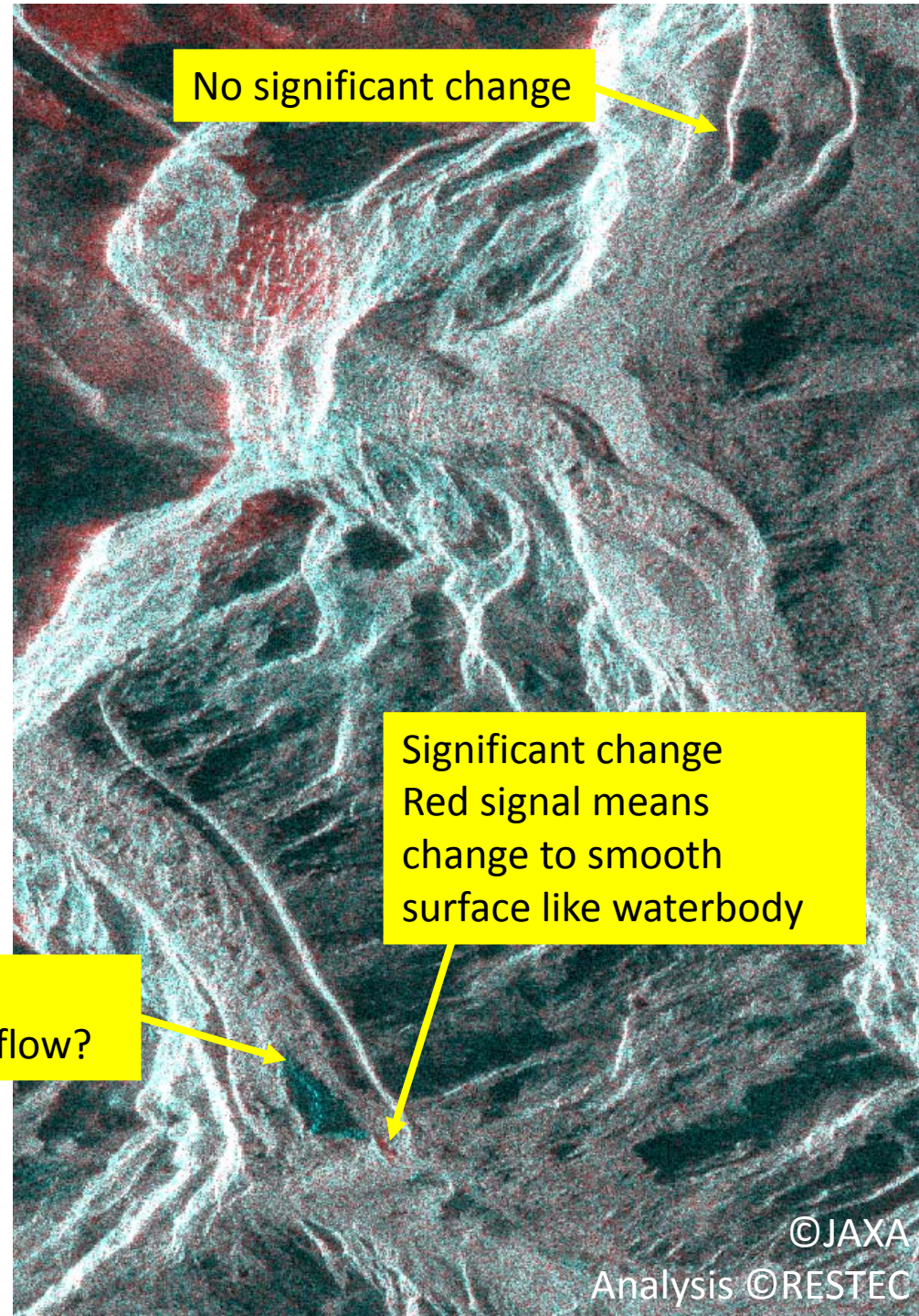


RGB Color Composite

R = 2015/04/23

G = 2015/07/02

B = 2015/07/02



No significant change

Significant change
Red signal means
change to smooth
surface like waterbody

Significant change
Drawdown by outflow?