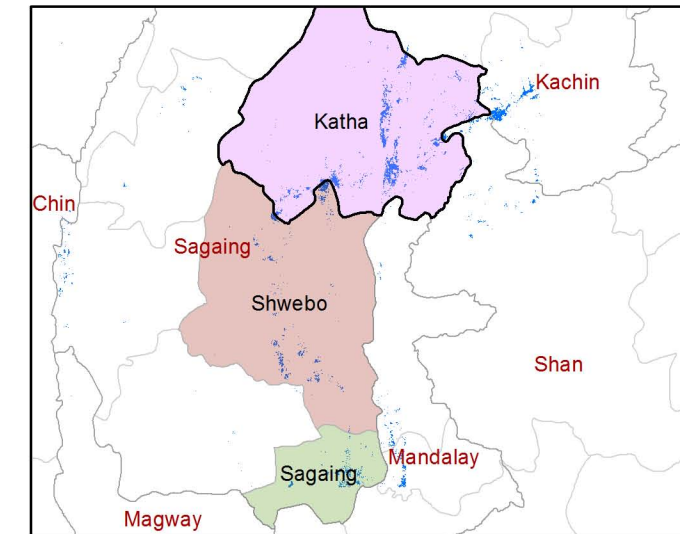
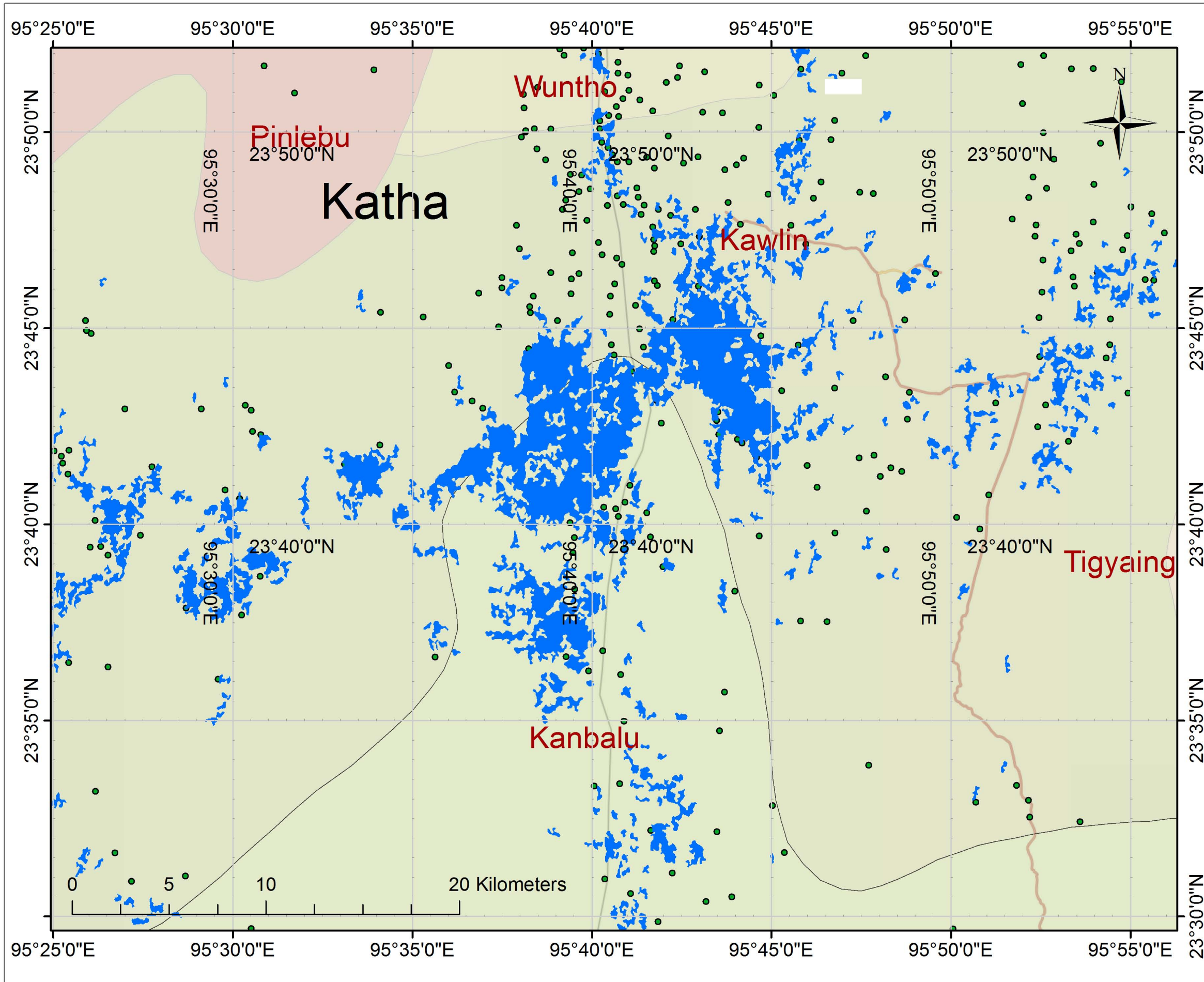


# POSSIBLE FLOOD AFFECTED AREAS IN KATHA DISTRICT, MYANMAR, 15 JULY 2015



## Legend

 Possible Flood Affected Area

Satellite/Sensor: ALOS-2/PALSAR-2  
Resolution: 10 m

Pre Disaster Image: 26-JUN-2015  
Post Disaster Image: 24-JUL-2015  
Copyright: © JAXA

Co-ordinate System: WGS\_1984  
Datum: D\_WGS\_1984  
Units: Degree

This map shows the approximate flooded area due to heavy rains. The possible affected areas are Katha, Swebo and Sagaing region of Myanmar as shown in the map. The satellite images were provided by JAXA.

The accuracy of this product is not validated

