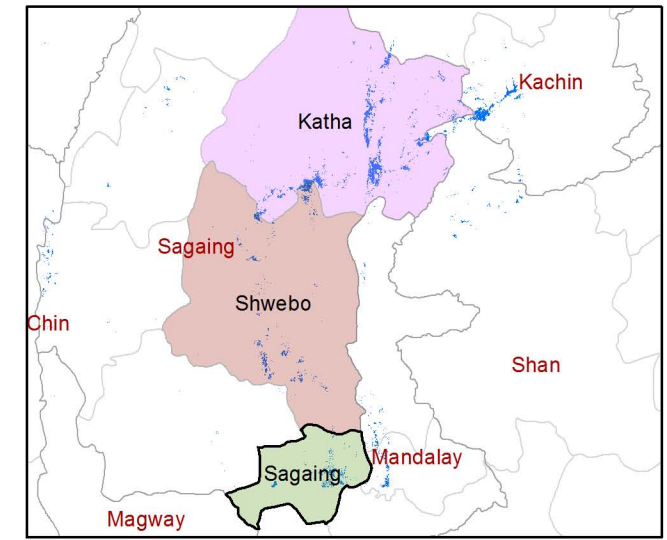
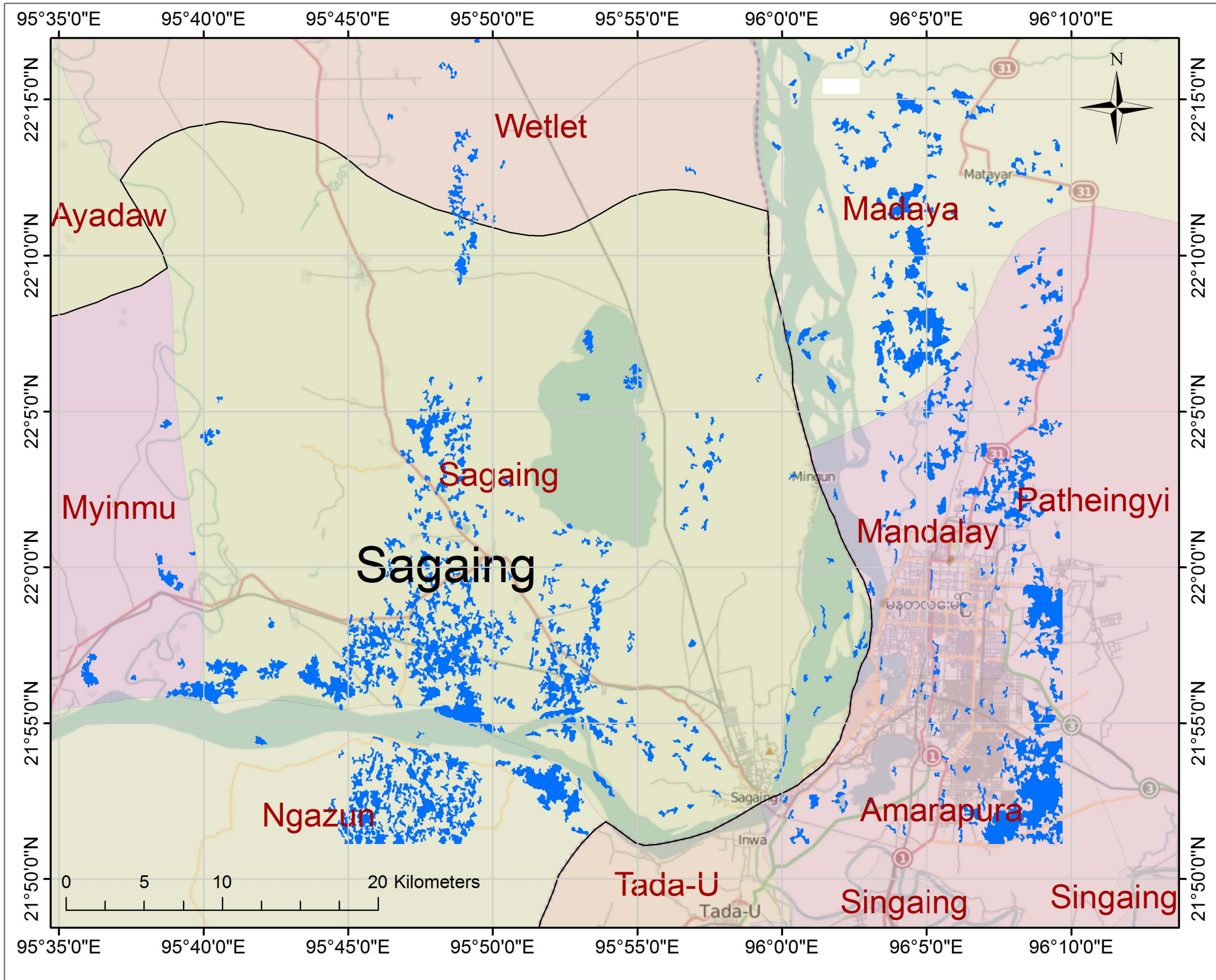


POSSIBLE FLOOD AFFECTED AREAS IN SAGAING DISTRICT , MYANMAR, 15 JULY 2015



Legend

 Possible Flood Affected Area

Satellite/Sensor: ALOS-2/PALSAR-2
Resolution: 10 m

Pre Disaster Image: 26-JUN-2015
Post Disaster Image: 24-JUL-2015
Copyright: © JAXA

Co-ordinate System: WGS_1984
Datum: D_WGS_1984
Units: Degree

This map shows the approximate flooded area due to heavy rains. The possible affected areas are Katha, Swebo and Sagaing region of Myanmar as shown in the map. The satellite images were provided by JAXA.

The accuracy of this product is not validated

