



Brief Analysis of Flood in Myanmar

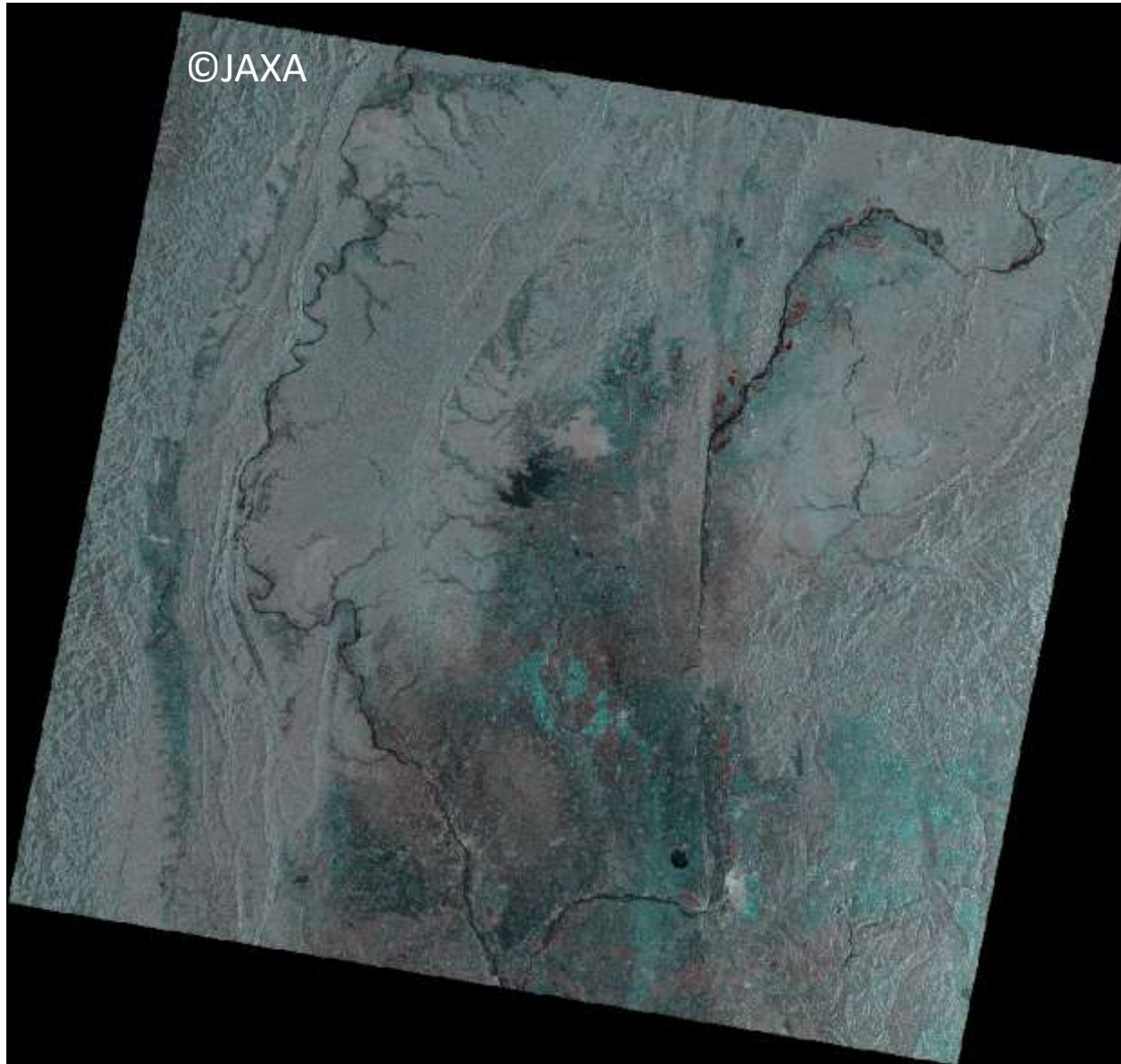
24 July 2015

Japan Aerospace Exploration Agency
Remote Sensing Technology Center of Japan (RESTEC)

Utilized Data

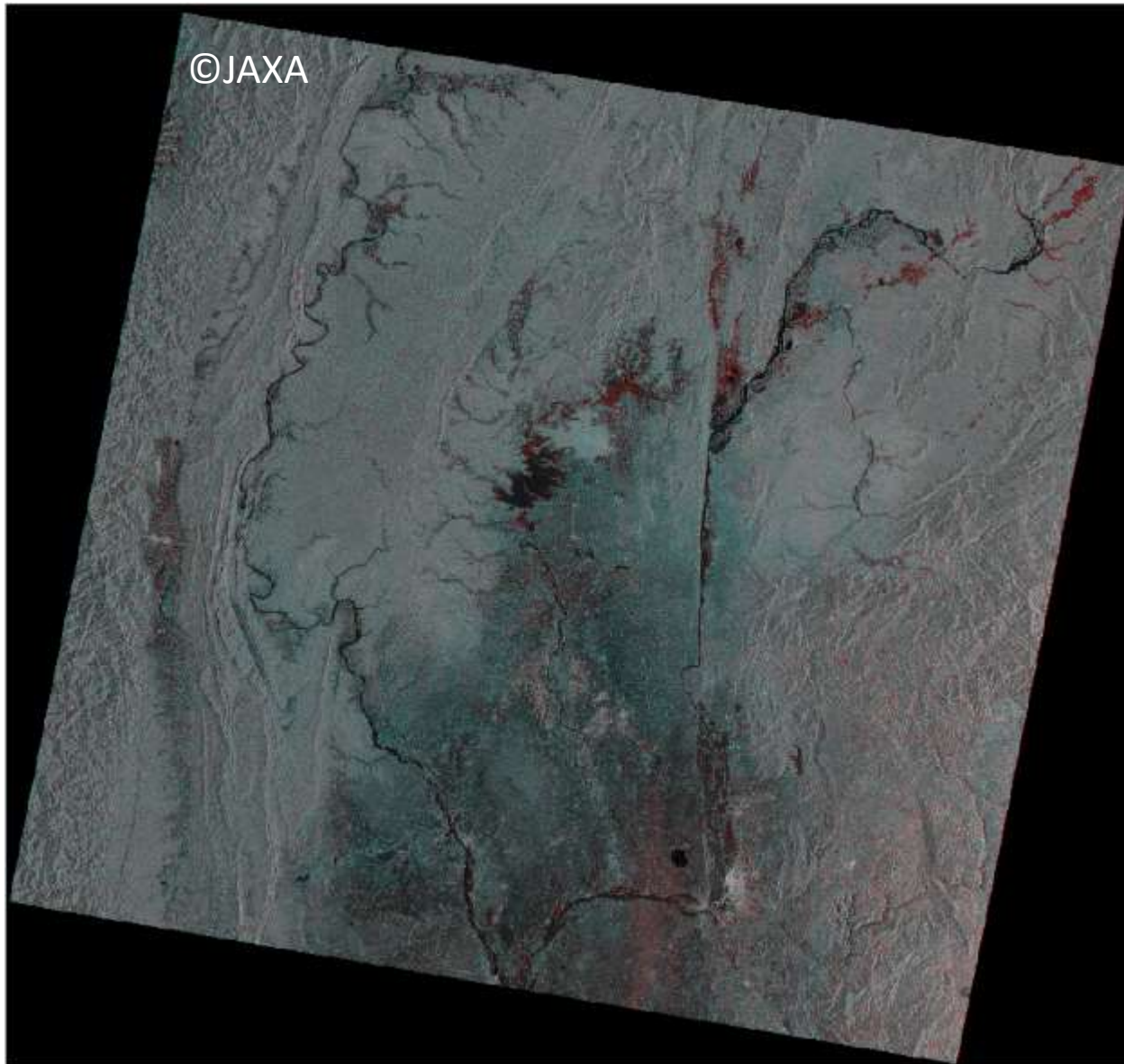
	Pre1	Pre2	Post
Satellite/Sensor	ALOS-2 /PALSAR-2	ALOS-2 /PALSAR-2	ALOS-2 /PALSAR-2
Observation date	2015/04/03	2015/06/26	2015/07/24
Observation mode	WD1 (W2)	WD1(W2)	WD1(W2)
Polarization	HH+HV	HH+HV	HH+HV
Off nadir angle	35.2 deg.	35.2 deg.	35.2 deg.
Orbit direction	Descending	Descending	Descending
Beam direction	Right	Right	Right

Water Change (Apr. 3 - Jun. 26 RGB composite)



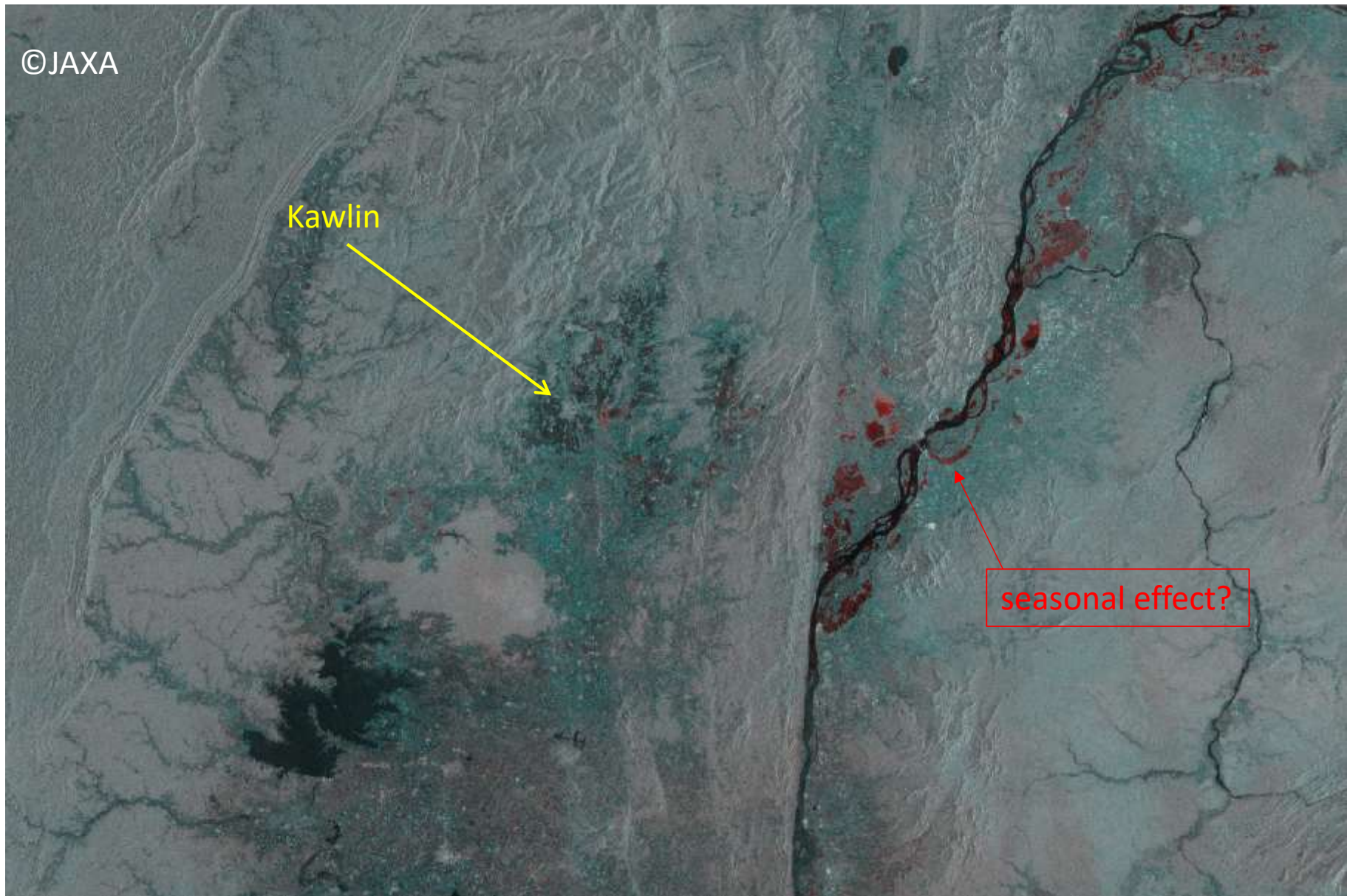
R:G:B=
2015/4/3:2015/6/26:2015/6/
26

Water Change(Jun. 26 - Jul. 24 RGB composite)

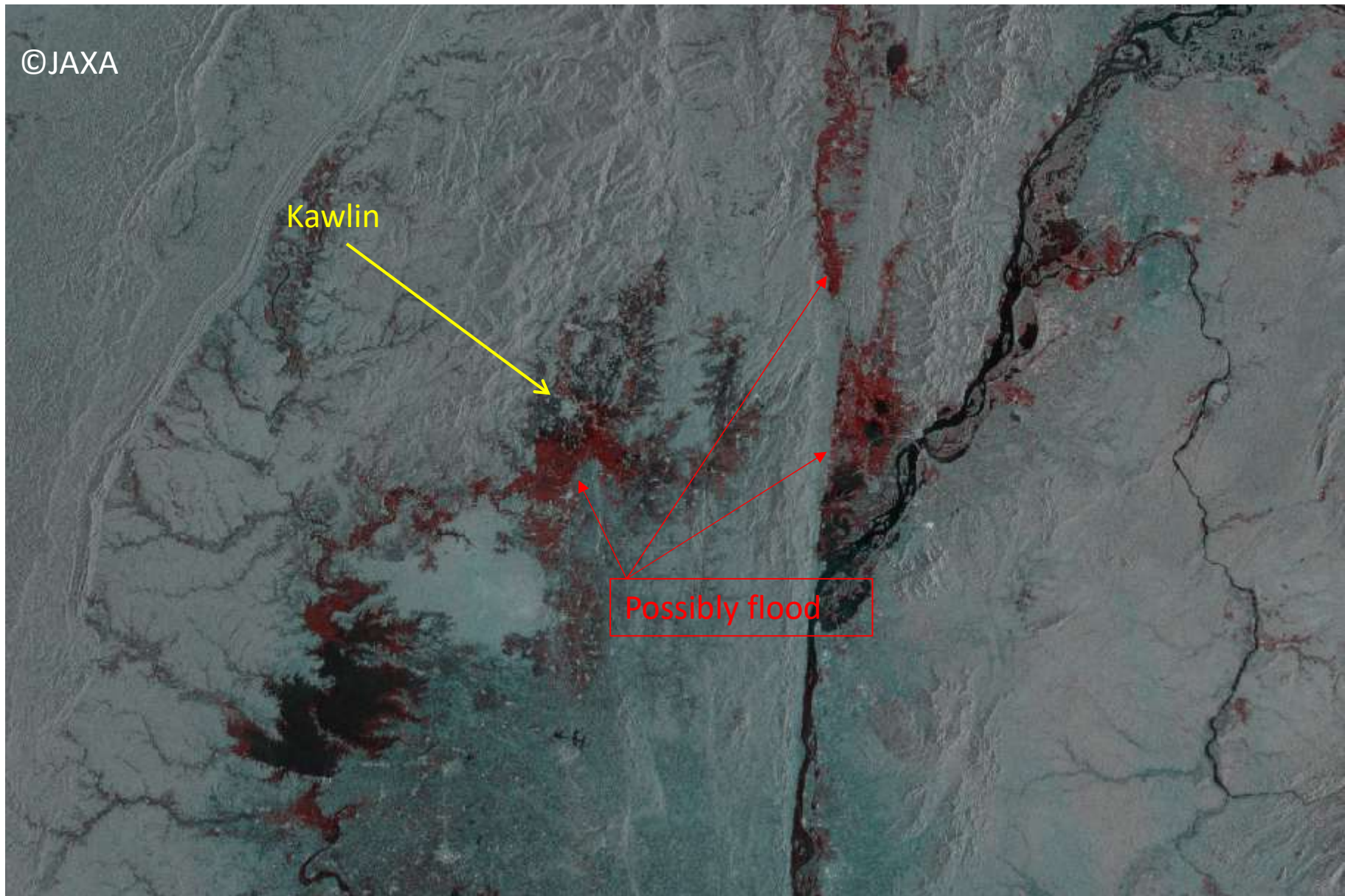


R:G:B=
2015/6/26:2015/7/24:2015/7/24

Extend image near Kawlin (Apr. 3 – Jun. 26)



Extend image near Kawlin (Jun. 26 – Jul. 24)



Flood area detection by ALOS-2

