



Brief Analysis of Flood in Myanmar

31 July 2015

Japan Aerospace Exploration Agency
Remote Sensing Technology Center of Japan (RESTEC)

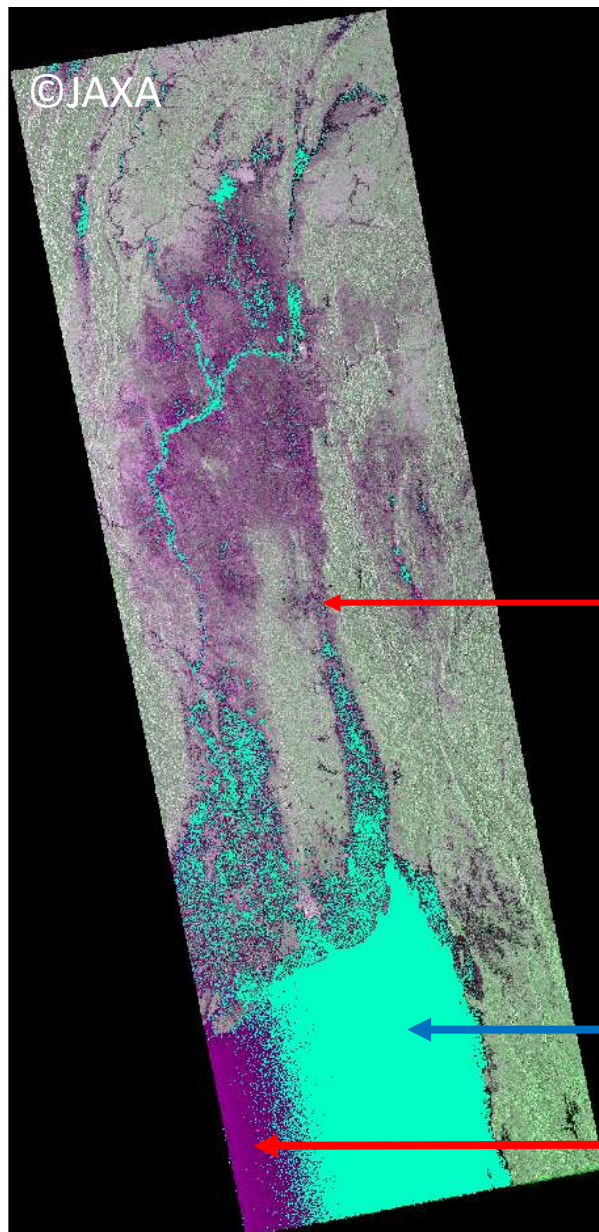
Utilized Data

Satellite/Sensor	ALOS-2/PALSAR-2
Observation date	2015/07/28
Observation mode	WD1 (W2)
Polarization	HH+HV
Off nadir angle	35.2 deg.
Orbit direction	Ascending
Beam direction	Right

Other Data

Data	SRTM Water Body Data (USGS)

Water area detected by PALSAR-2(Jul. 28)



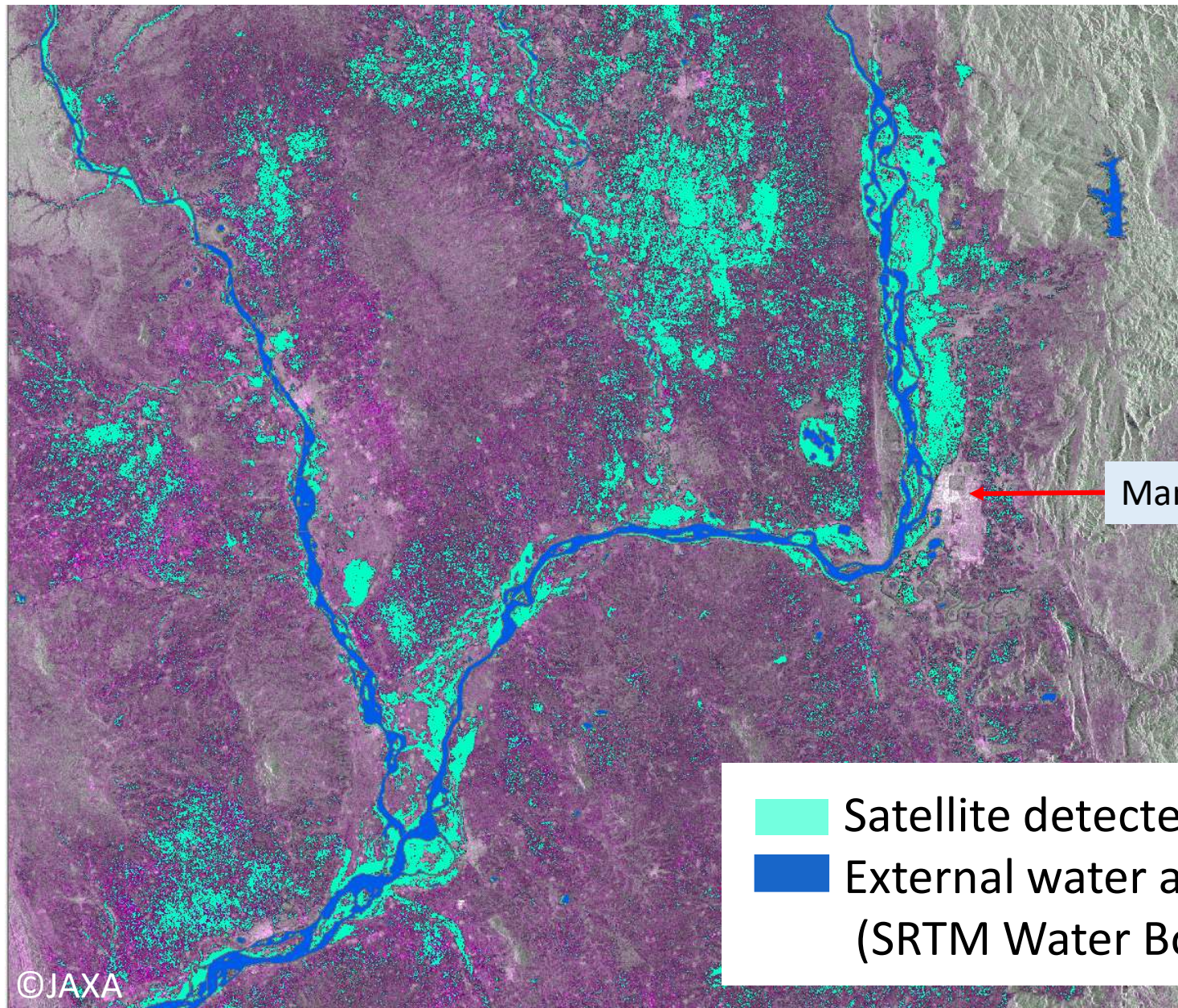
■ Satellite detected water
(Background image : R:G:B=HH:HV:HH)

← Naypyidaw



← Gulf of Martaban

← Radiometric effect of PALSAR-2 ScanSAR

Extend image near Mandalay



Mandalay

-  Satellite detected water
-  External water area
(SRTM Water Body Data(USGS))