

Result of Image Interpretation of ALOS-2/PALSAR-2 for Landslides Investigation of the 2015 Myanmar Heavy Rain Disaster

Remote Sensing Technology Center of Japan (RESTEC)

Japan Aerospace Exploration Agency (JAXA)



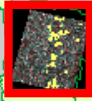
Introduction

- Summary of data used in this analysis

Satellite/Sensor	Obs. date	Obs. mode	Pol.	Flight Direction	Beam Direction	Off-nadir Angle
ALOS-2/PALSAR-2	2015/08/09	UBD	HH + HV	Descending	Left	32.4

- Method
 - RGB color composite and color enhancement
 - $R : G : B = HH : HV : HV$
 - Image interpretation
- Outputs
 - Map product
 - Landslides polygon data (ESRI shape format)

Interpreted area



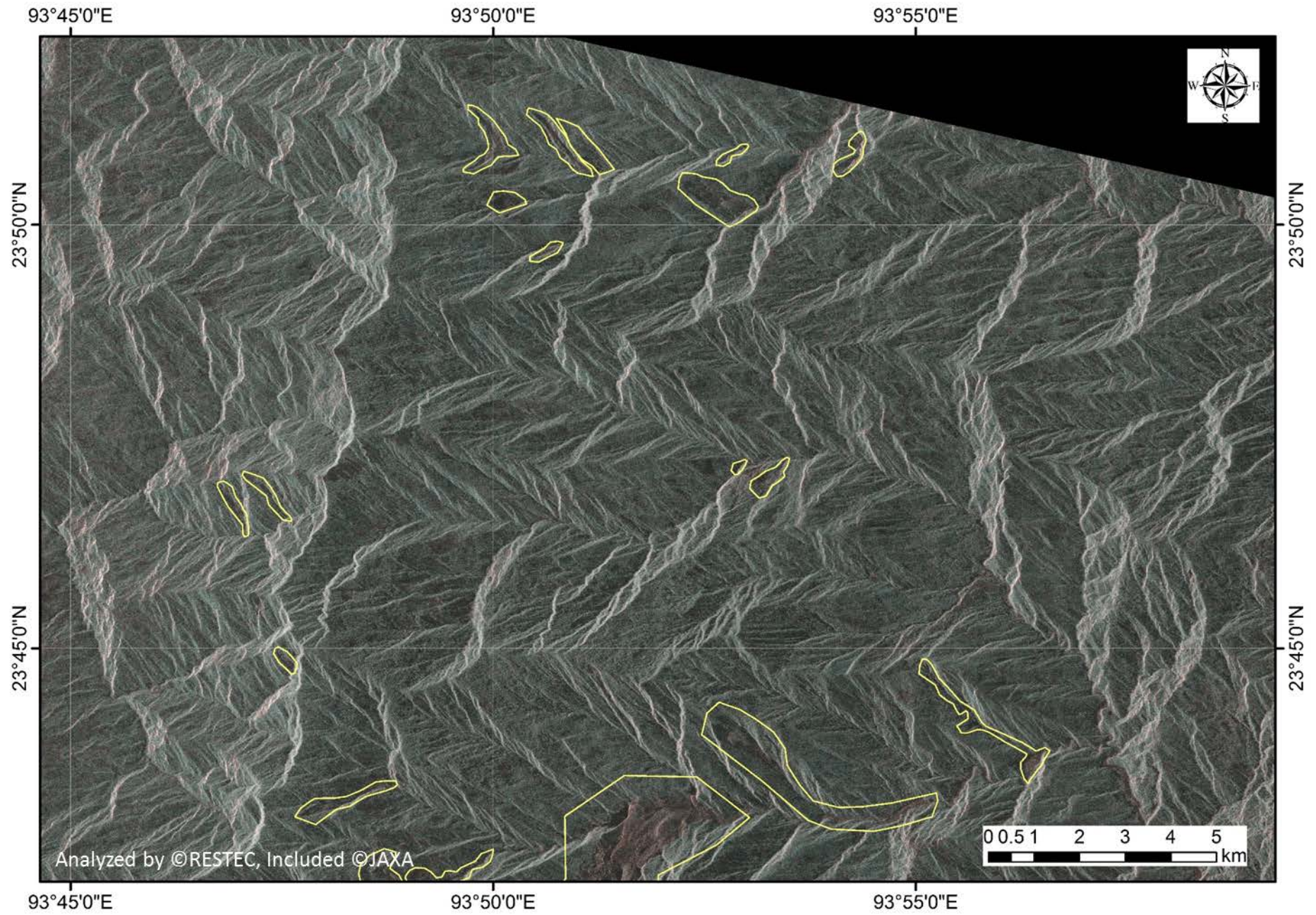
Northern part of the CHIN STATE

Myanmar (Burma)



Result

- Landslides interpretation
 - More than 52 landslides were found in interpreted area.
 - 3 landslide dam were found in interpreted area.
- Note
 - Shape of landslides polygon is not same as original shape of landslides because landslides polygon was created from un-orthorectified image.
 - Historical landslides might be included in landslides polygons.
 - Creep type landslides are not included in landslides polygons.



93°45'0"E

93°50'0"E

93°55'0"E



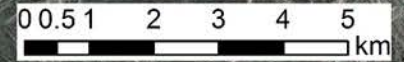
23°50'0"N

23°50'0"N

23°45'0"N

23°45'0"N

Analyzed by ©RESTEC, Included ©JAXA



93°45'0"E

93°50'0"E

93°55'0"E

93°45'0"E

93°50'0"E

93°55'0"E

23°45'0"N

23°45'0"N

23°40'0"N

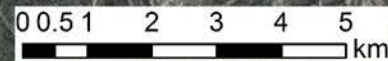
23°40'0"N



Landslide dam



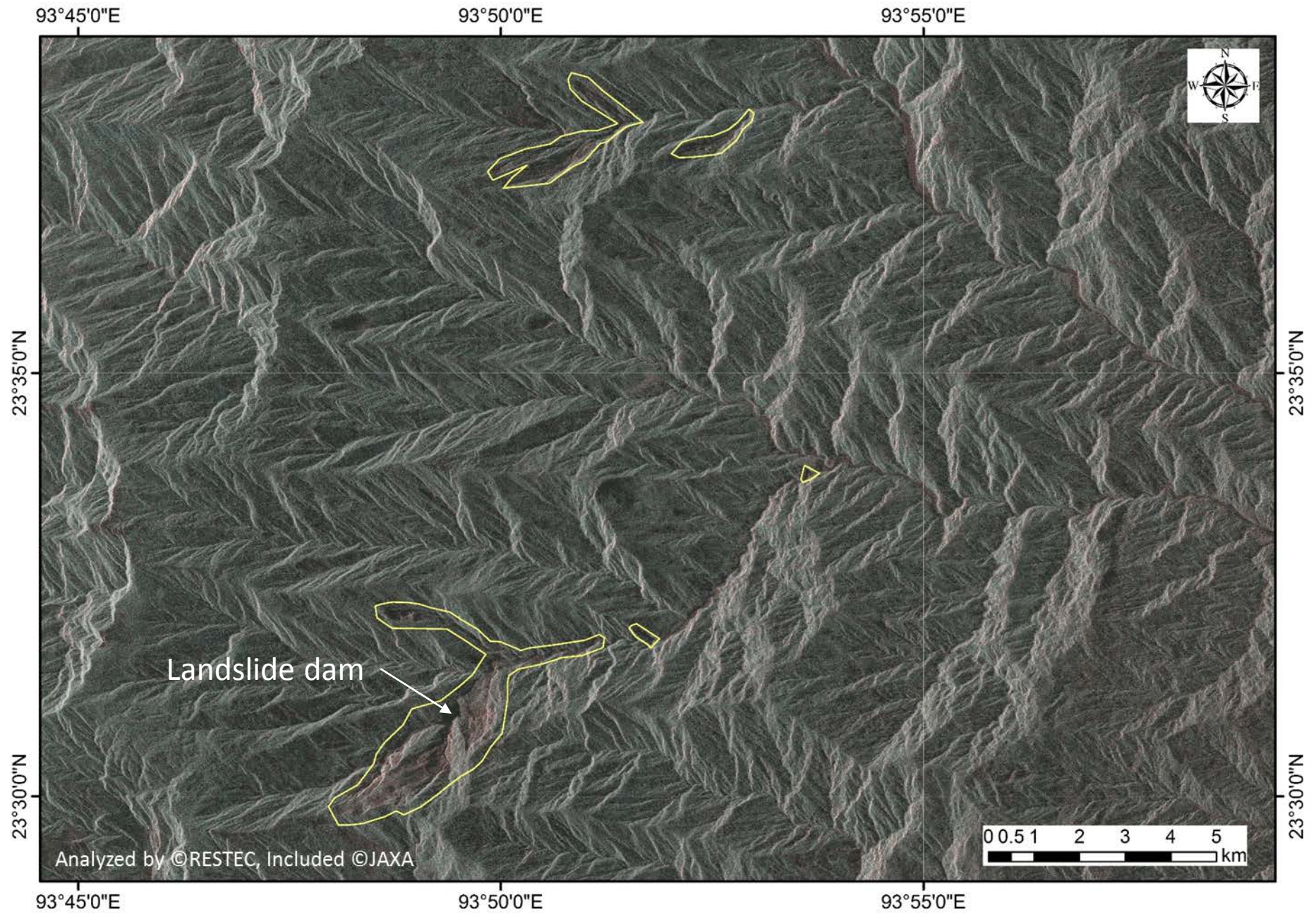
Analyzed by ©RESTEC, Included ©JAXA

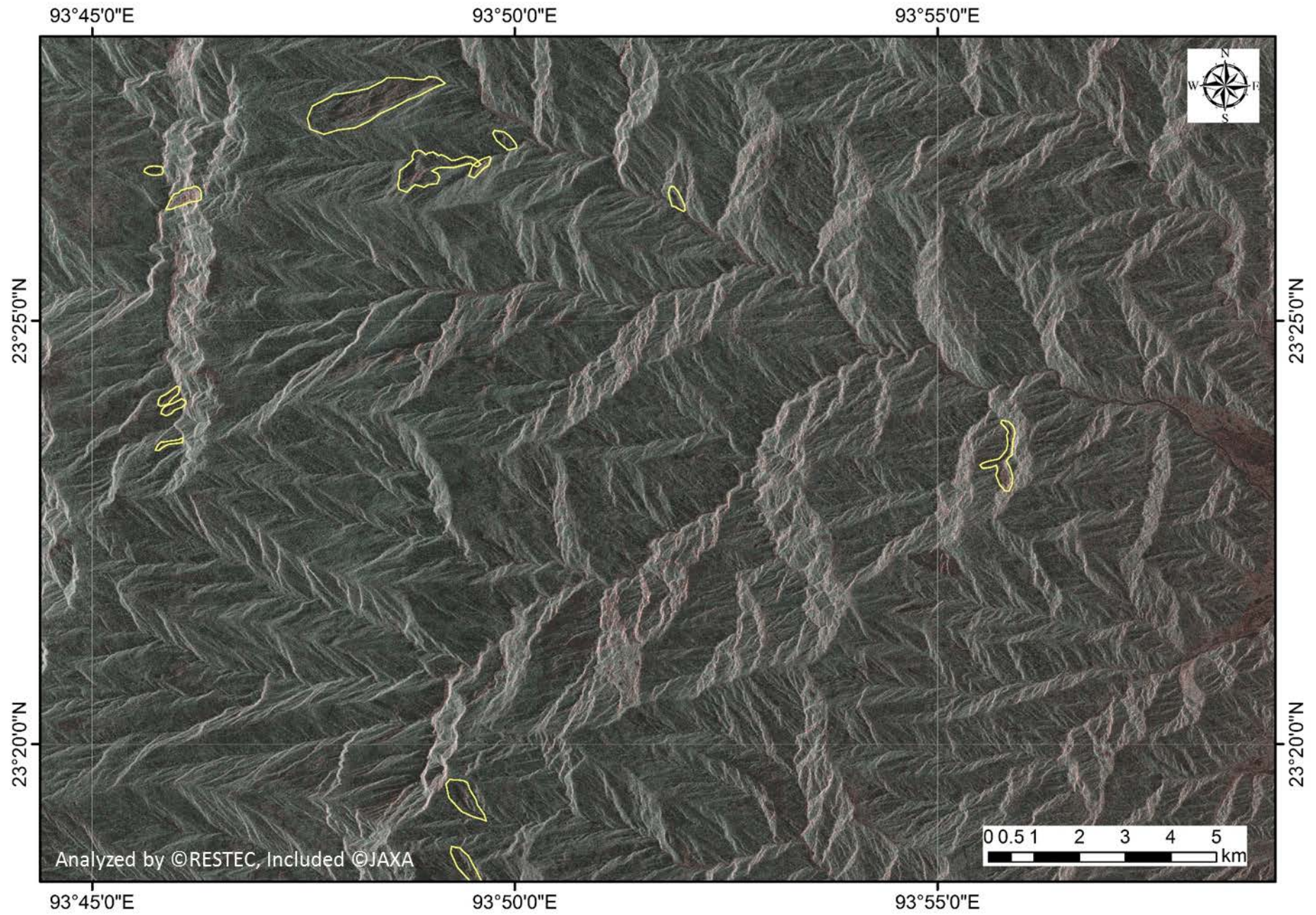


93°45'0"E

93°50'0"E

93°55'0"E





93°45'0"E

93°50'0"E

93°55'0"E

23°25'0"N

23°25'0"N

23°20'0"N

23°20'0"N

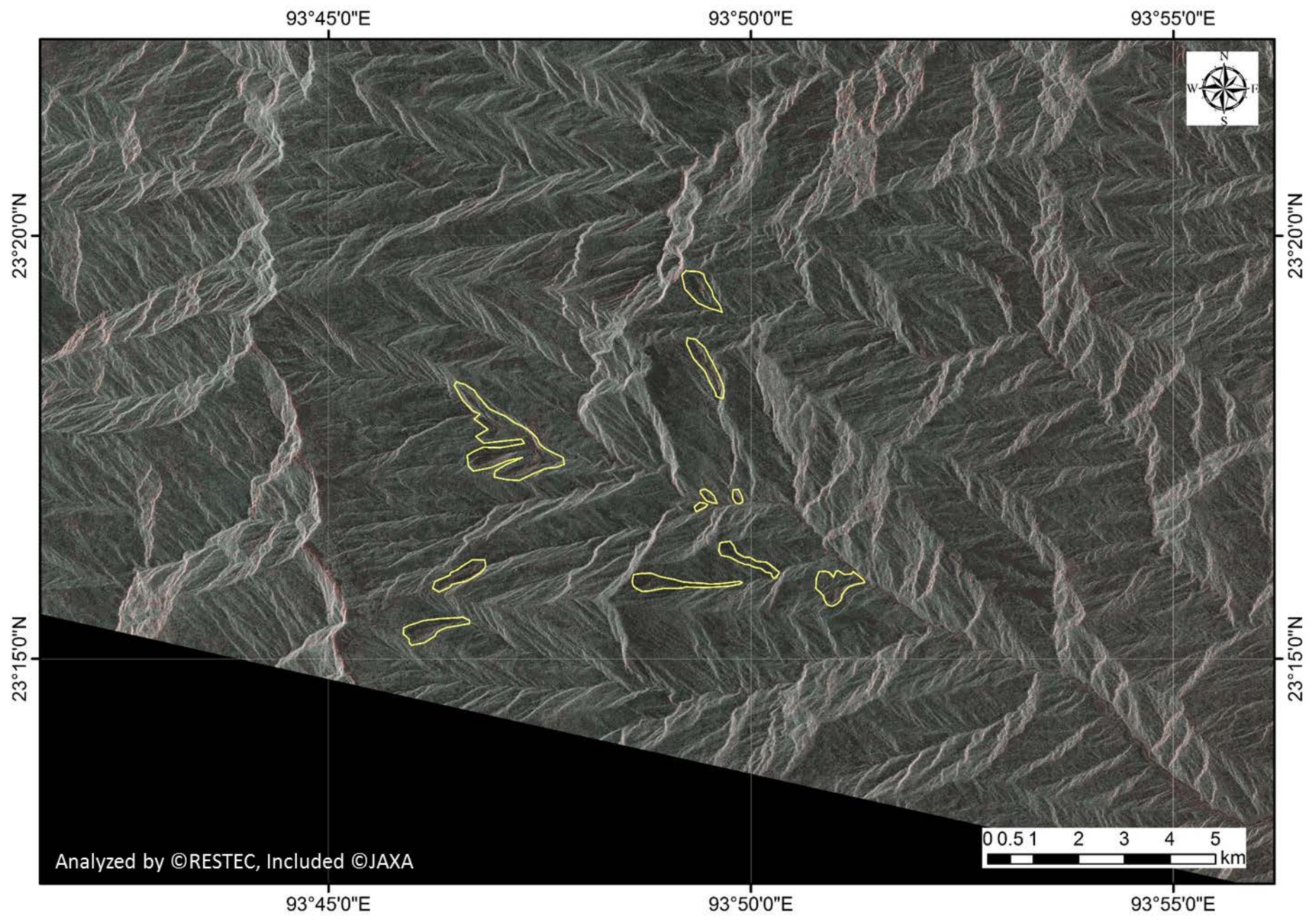
Analyzed by ©RESTEC, Included ©JAXA

0 0.5 1 2 3 4 5 km

93°45'0"E

93°50'0"E

93°55'0"E



Analyzed by ©RESTEC, Included ©JAXA

