



Initial Analysis of Mudflow in Tajikistan 15 August 2015

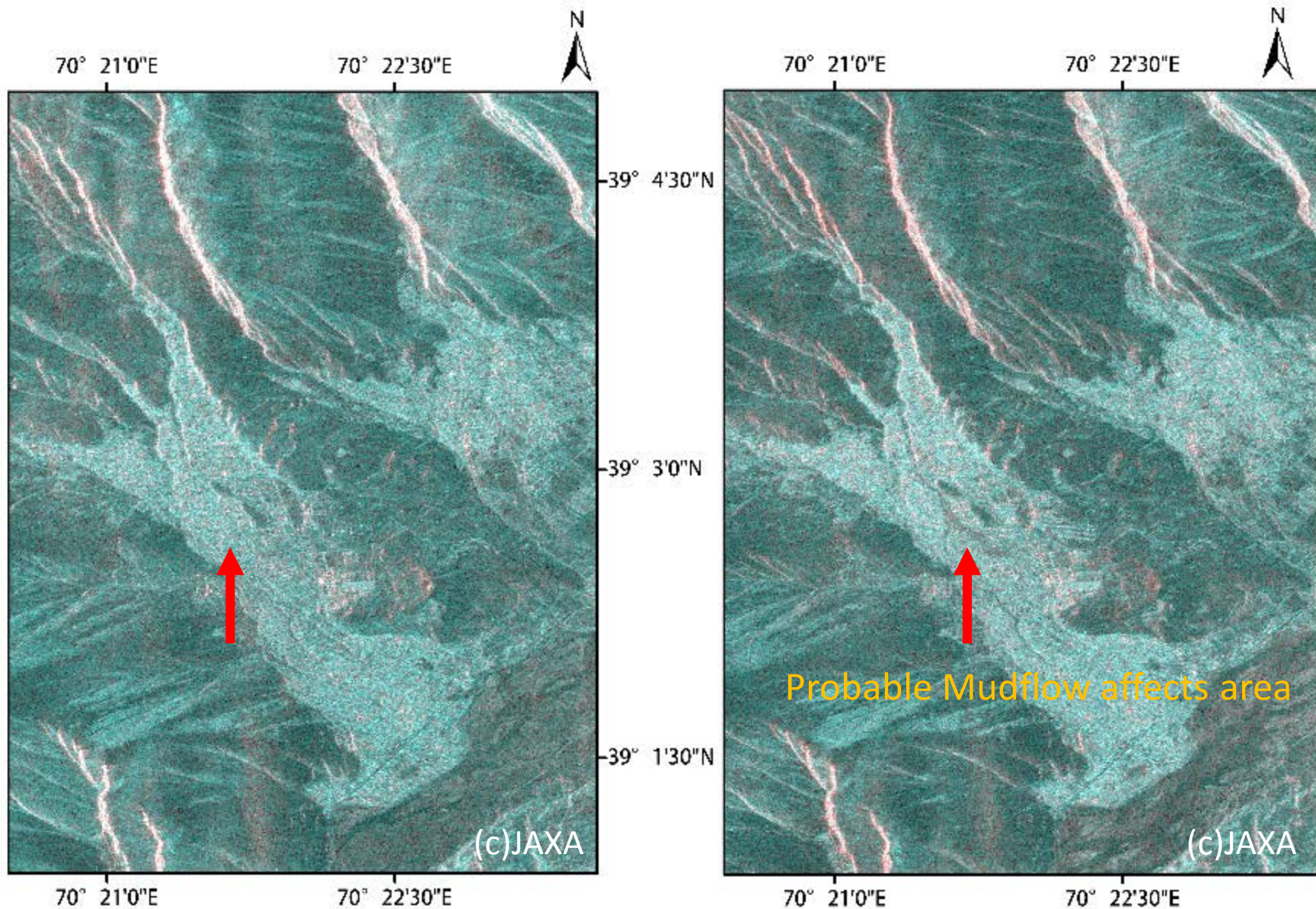
Japan Aerospace Exploration Agency

Remote Sensing Technology Center of Japan (RESTEC)

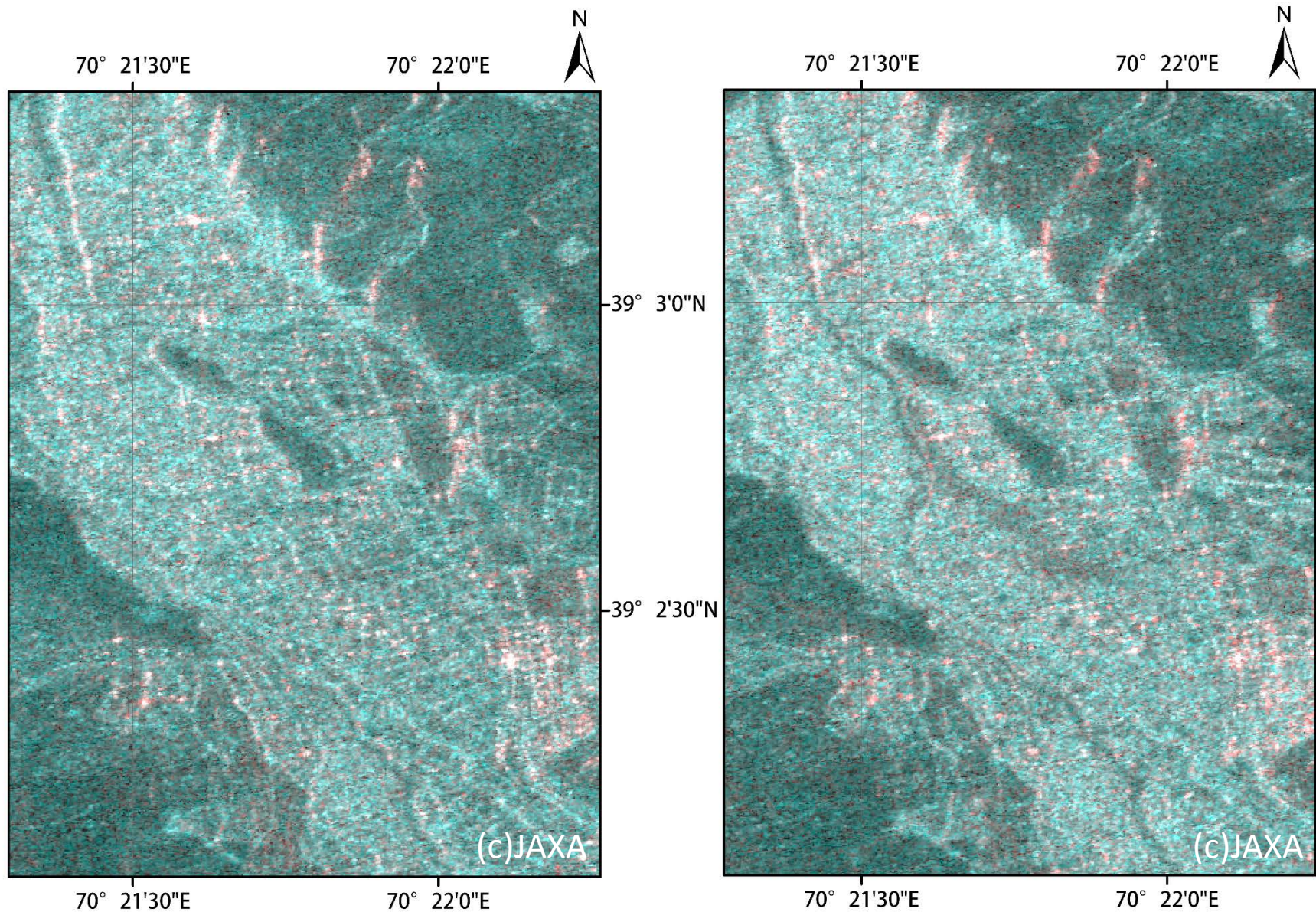
Utilized Data

	Pre disaster	Post disaster
Satellite/Sensor	ALOS-2/PALSAR-2	ALOS-2/PALSAR-2
Observation date	2015/04/25	2015/08/15
Observation mode	SM2(FP6-5)	SM2(FP6-5)
Polarization	HH+HV+VH+VV	HH+HV+VH+VV
Off nadir angle	30.4 deg.	30.4 deg.
Orbit direction	Ascending	Ascending
Beam direction	Right	Right

Comparison of pre/post disaster image of AOI

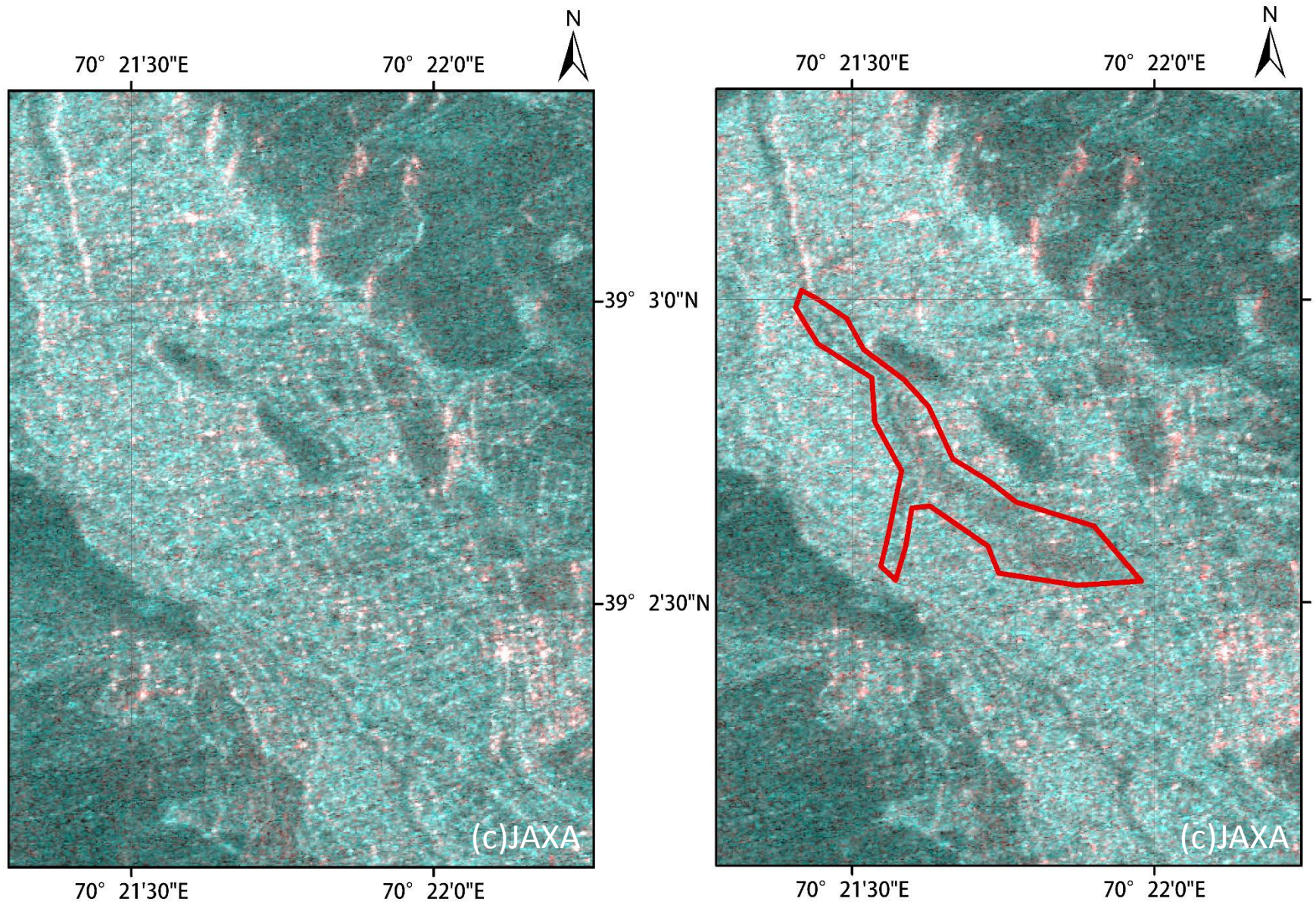


Pre/Post disaster extend image



Left:2015/4/25 Right:2015/8/15 (R:G:B=HH:HV:HV)

Area estimation affected by mudflow



 Probable Mudflow affects area