



Water detection using ALOS-2/PALSAR-2 in Yilan country, Taiwan

Japan Aerospace Exploration Agency (JAXA)
Remote Sensing Technology Center of Japan (RESTEC)

Introduction

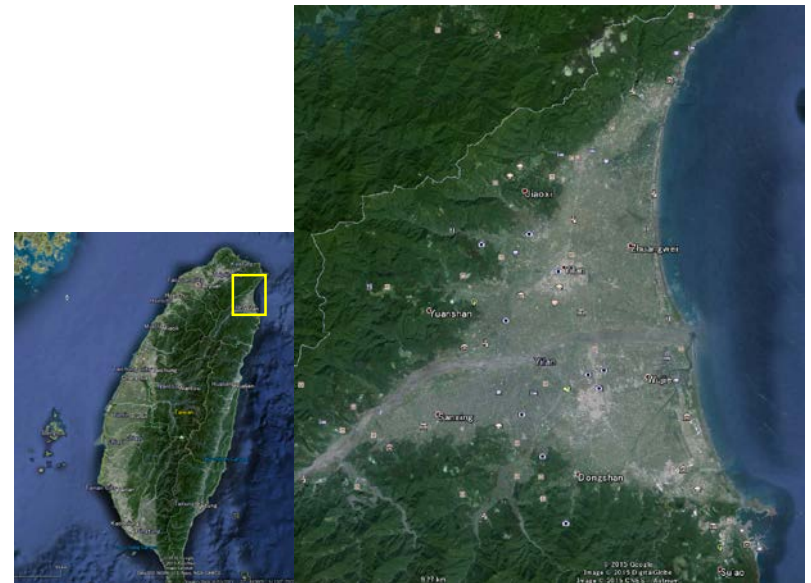
- Summary of data used in this analysis

<i>Obs. date</i>	<i>Mode</i>	<i>Sensor</i>	<i>Pol.</i>	<i>Flight Direction</i>	<i>Off-nadir angle</i>	<i>Beam Direction</i>
2014/12/04	UBS	PALSAR-2	HH	Descending	32.1	Left
2015/09/29	UBD	PALSAR-2	HH+HV	Descending	40.3	Left

Notice : This analysis use deferent incident angle data.
So in the mountain area the result is NOT reliable
because of foreshortening or ray over effects.

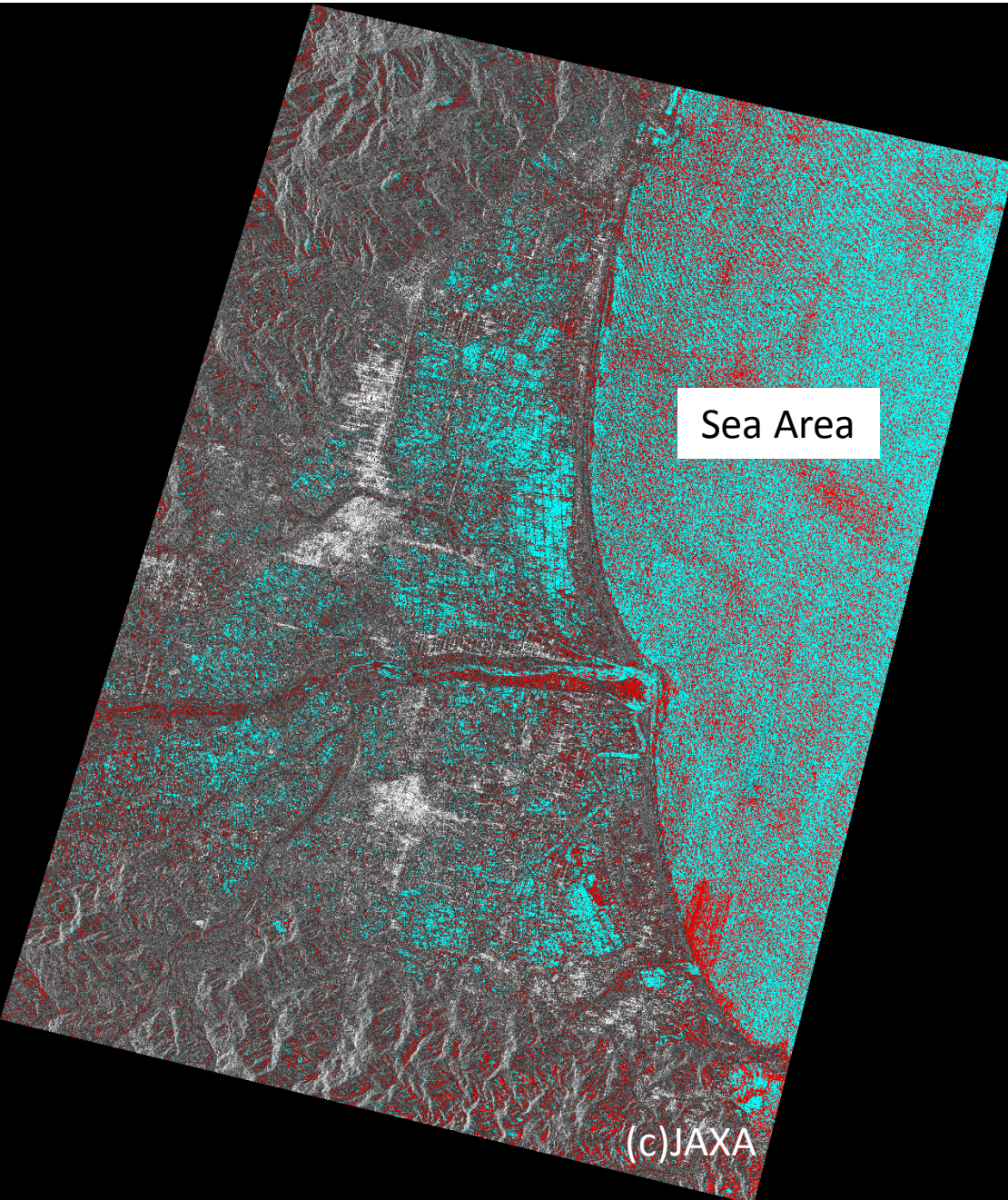
- Method

- water detection
(using land classification)
- change analysis





Google earth image of analysis area

Result



- Light blue areas are mostly paddy area.
- Red area may be the extension of river in embankment.(No significant damage a detected by satellite)

 Satellite detected water (2014/12/04)

 Satellite detected water (2015/09/29)

Background image : 2015/09/29

Conclusion

- Significant damage is NOT detected by satellite data.
- The river extension is detected, but this situation may be under control.