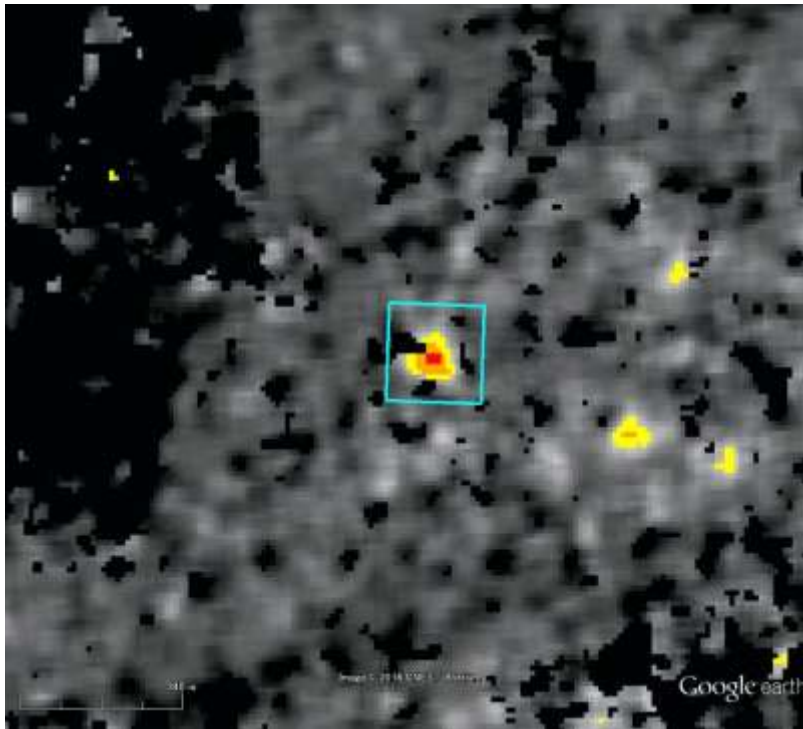


# 2016年台湾南部地震

台南市永康区 **高楼倒塌**

Analysis using "3 time series coherence"  
and "Extracted urban area".

Google earth



\*3 time series coherence is used with data of 30/Jun/2015, 29/Dec/2015 and 9/Feb/2016.

\*Urban area is extracted with a coherence value more than 0.5 that is calculated a pair data of 30 Jun. and 29 Dec. 2015.

Data Source: ALOS-2 PALSAR-2

# 2016年台湾南部地震

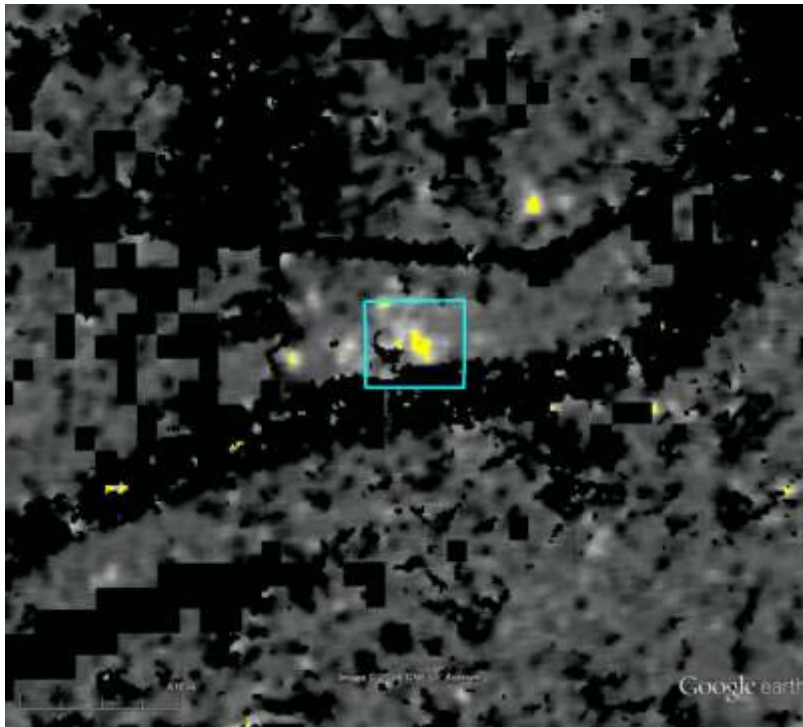
台南安南區的溪頂里地区 **液状化**



Sentinel Asia

Analysis using "3 time series coherence"  
and "Extracted urban area".

Google earth



Data Source: ALOS-2 PALSAR-2





# 2016年台湾南部地震

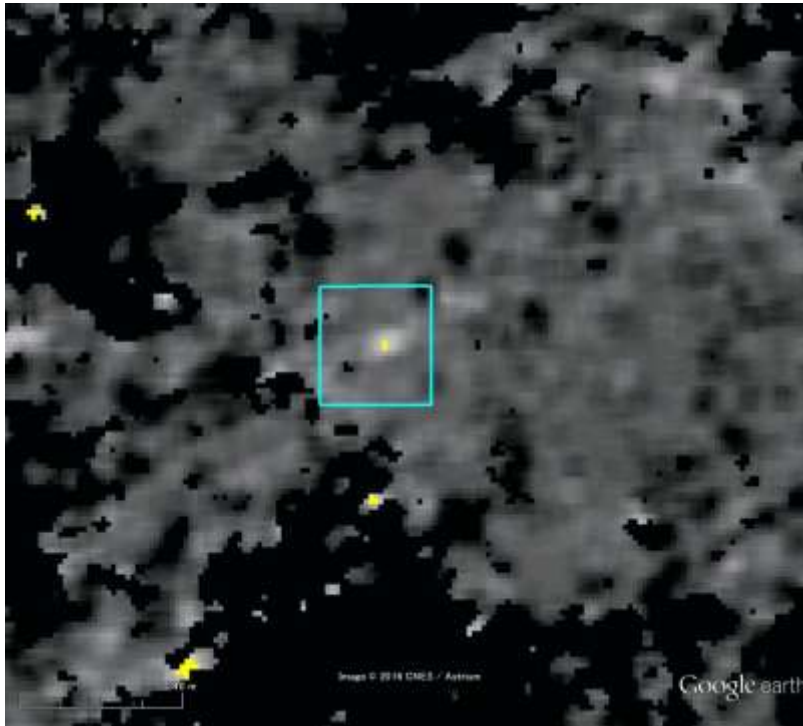
京城銀行 樓傾倒



Analysis using "3 time series coherence"  
and "Extracted urban area".

Google earth

Sentinel Asia



Data Source: ALOS-2 PALSAR-2