



Initial Analysis results of Glacial Situation In Myanmar using ALOS-2/PALSAR-2

**Japan Aerospace Exploration Agency (JAXA)
Remote Sensing Technology Center of Japan
(RESTEC)**

Introduction

- Summary of data used in this analysis

Analysis 1

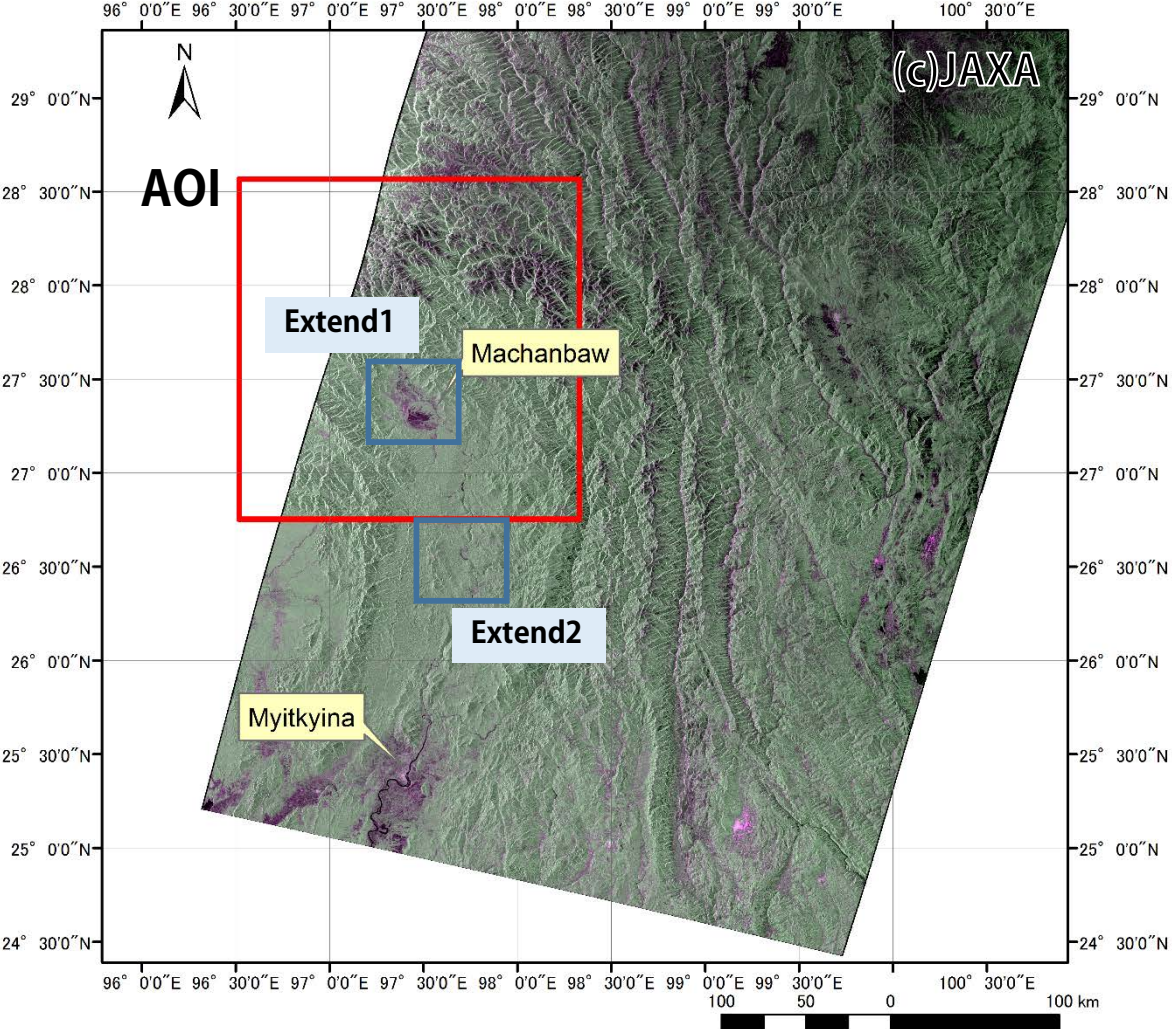
<i>Obs. date</i>	<i>Mode</i>	<i>Satellite/Sensor</i>	<i>Pol.</i>	<i>Flight Direction</i>	<i>Off-nadir angle</i>	<i>Beam Direction</i>	<i>Data Credit</i>
2016/02/19	WBD	ALOS-2 /PALSAR-2	HH+ HV	Descending	35.2	Right	JAXA
2016/02/25	WBD	ALOS-2 /PALSAR-2	HH+ HV	Descending	34.7	Left	JAXA
2016/01/03	-	LANDSAT-8 /OLI	-	-	-	-	USGS

Analysis 2

<i>Obs. date</i>	<i>Mode</i>	<i>Satellite/Sensor</i>	<i>Pol.</i>	<i>Flight Direction</i>	<i>Off-nadir angle</i>	<i>Beam Direction</i>	<i>Data Credit</i>
2015/12/06	WBD	ALOS-2 /PALSAR-2	HH+ HV	Descending	35.2	Right	JAXA
2016/02/28	WBD	ALOS-2 /PALSAR-2	HH+ HV	Descending	35.2	Right	JAXA

Analysis 1

- Full Scene of ALOS-2(2016/2/25)

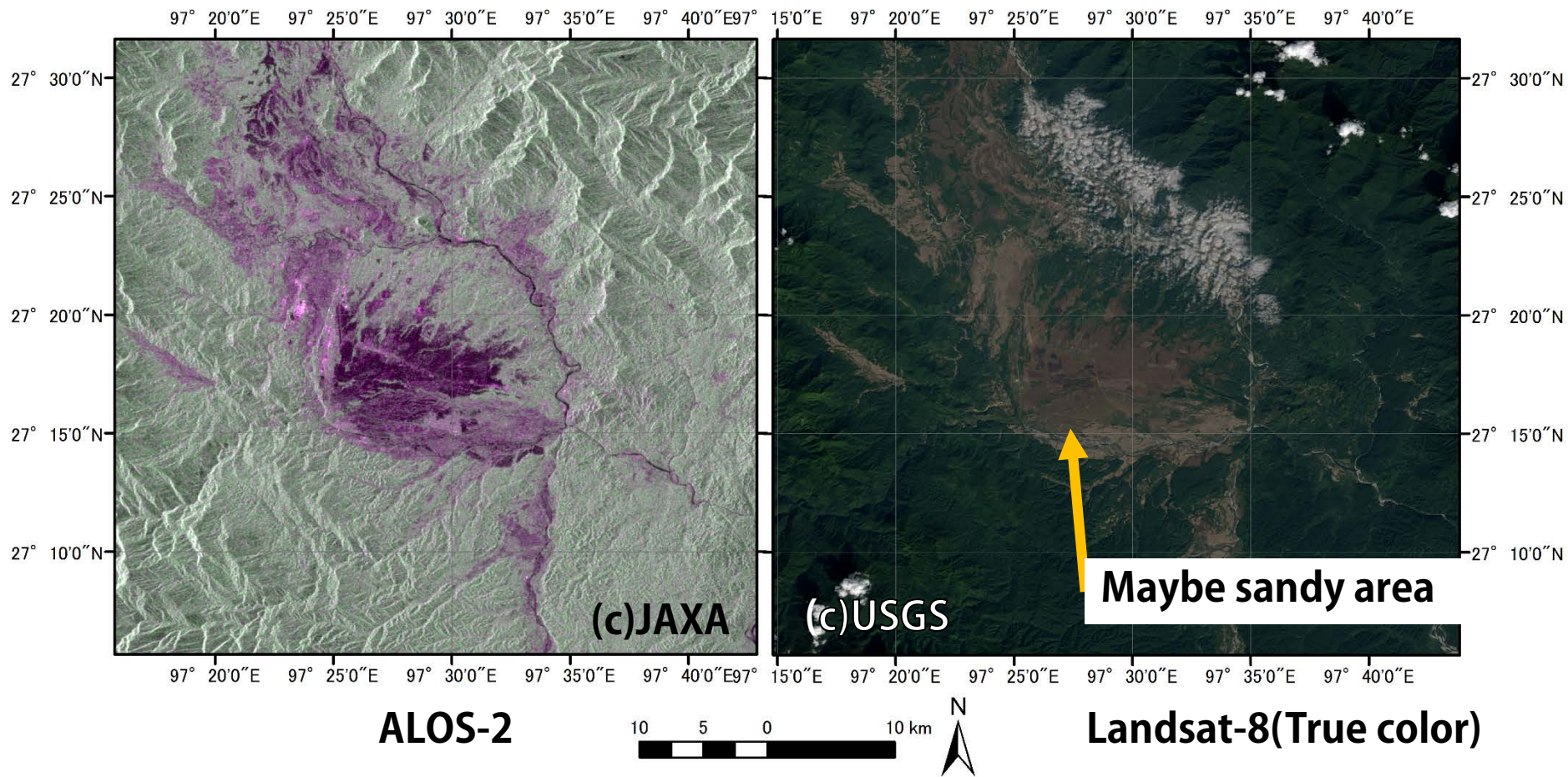


R:G:B=HH:HV:HH

Significant (or Deadly)
Glacial Lake is NOT
identified

Analysis 1 Extend 1

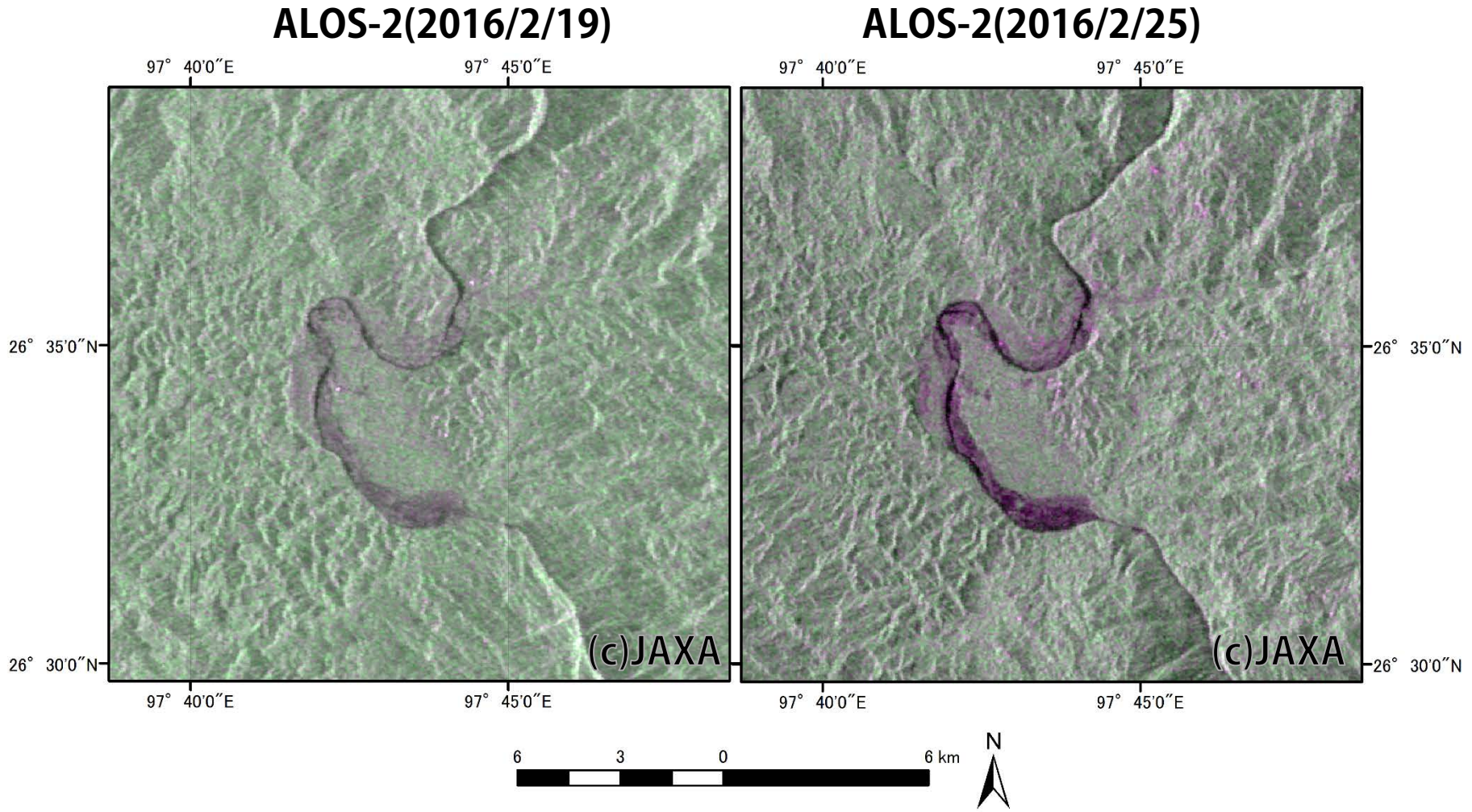
- The Area of dark in ALOS-2 (usually water area)
- Compare with Landsat-8



- This area is **NOT** water area (Maybe “smooth” land)

Analysis 1 Extend 2

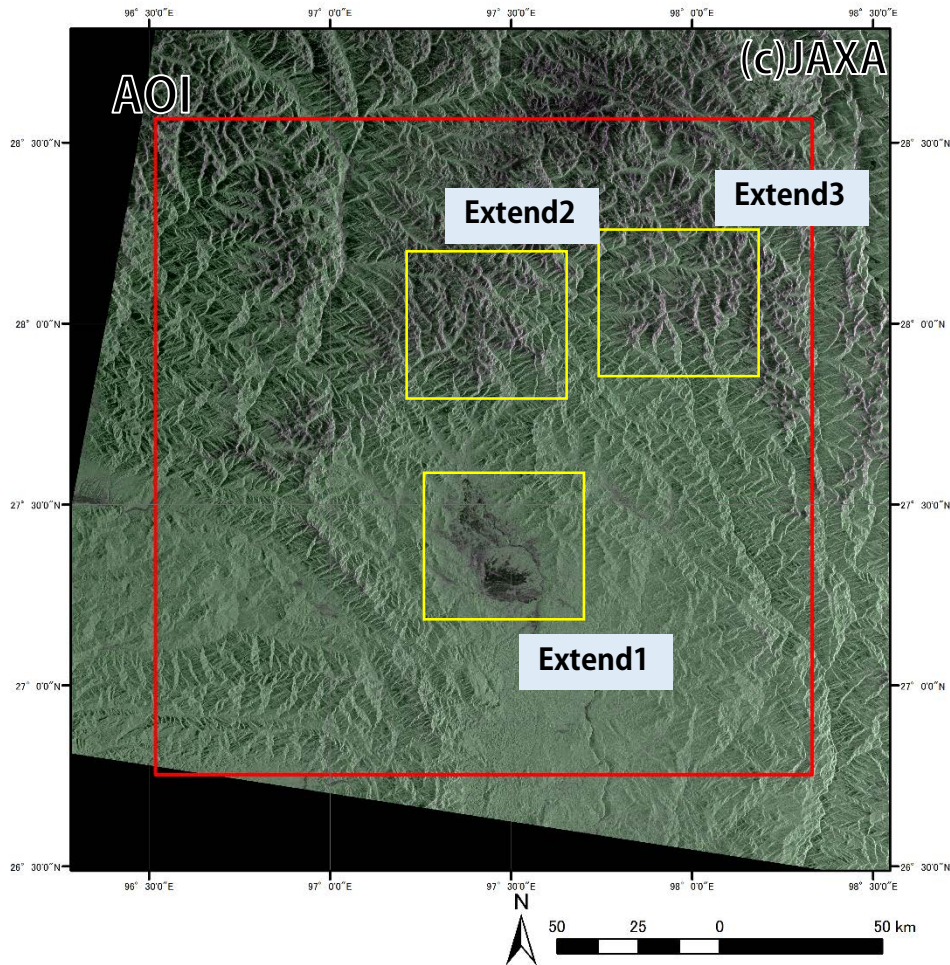
- River channel Expansion Area



- We detect some river channels expansion, but **cannot identify** the origin.

Analysis 2

- ALOS-2 image covered AOI (2016/2/28 observed)



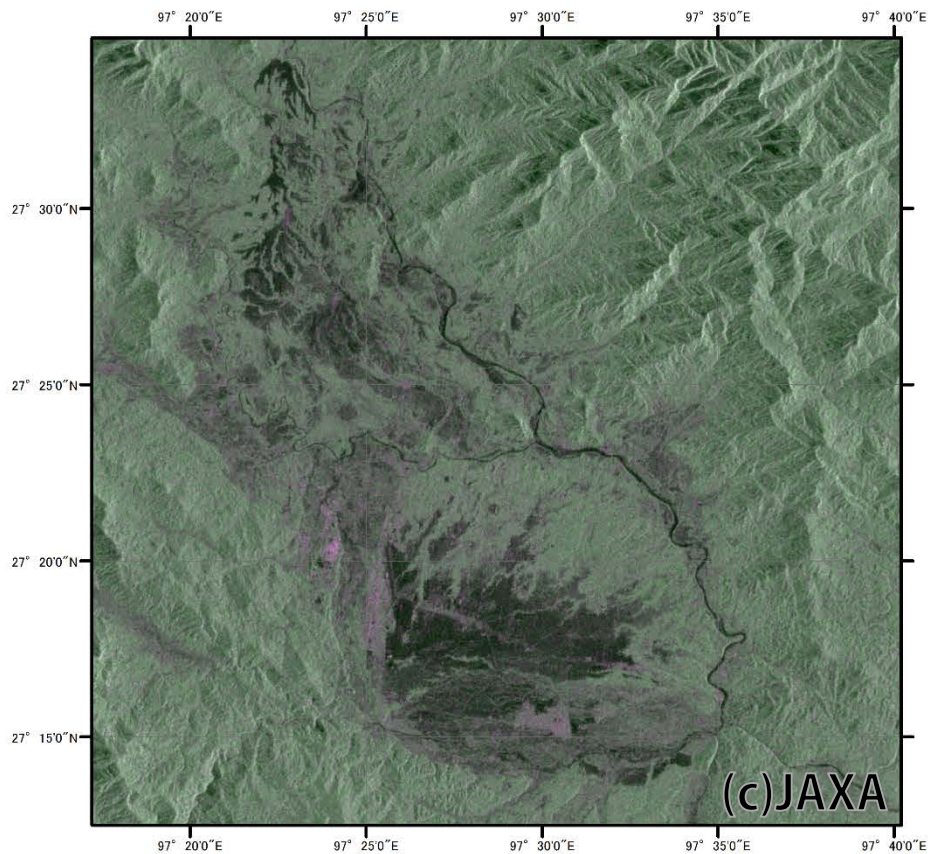
This scene covers whole area of AOI.

R:G:B=HH:HV:HH

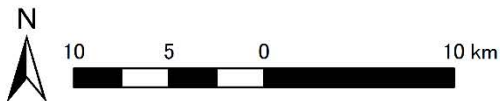
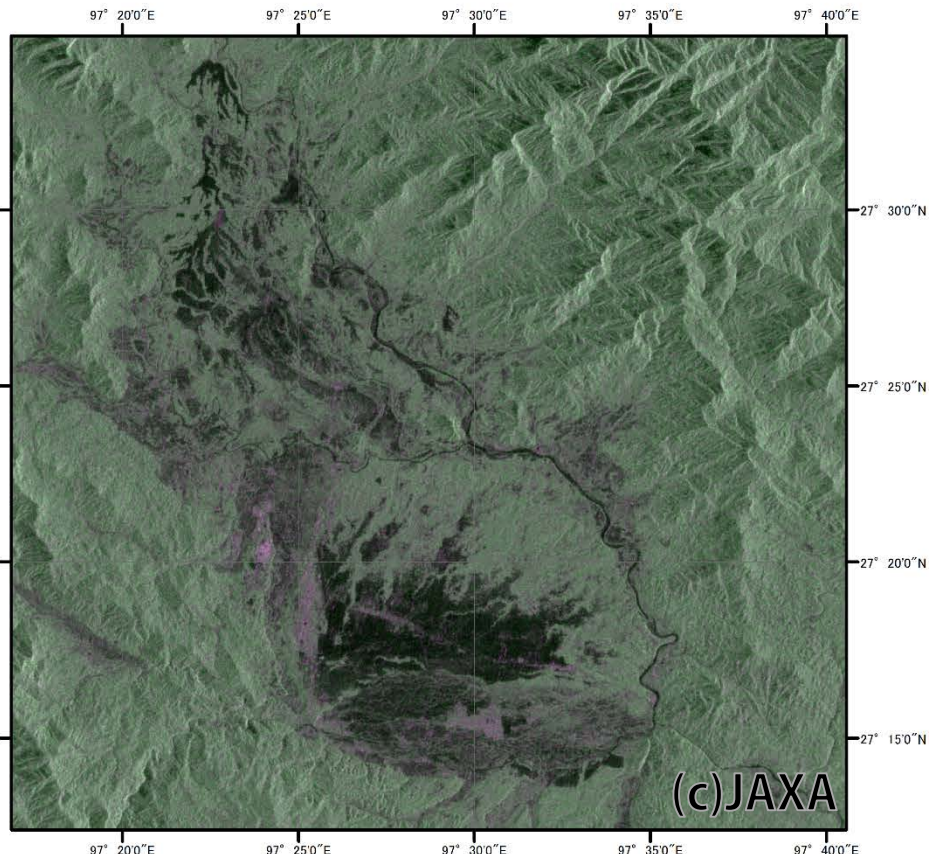
But unfortunately we can **NOT** identify the significant glacier lakes by foreshortening effects, radar shadow effects, or others.

Analysis 2 Extend 1

ALOS-2(2015/12/6)



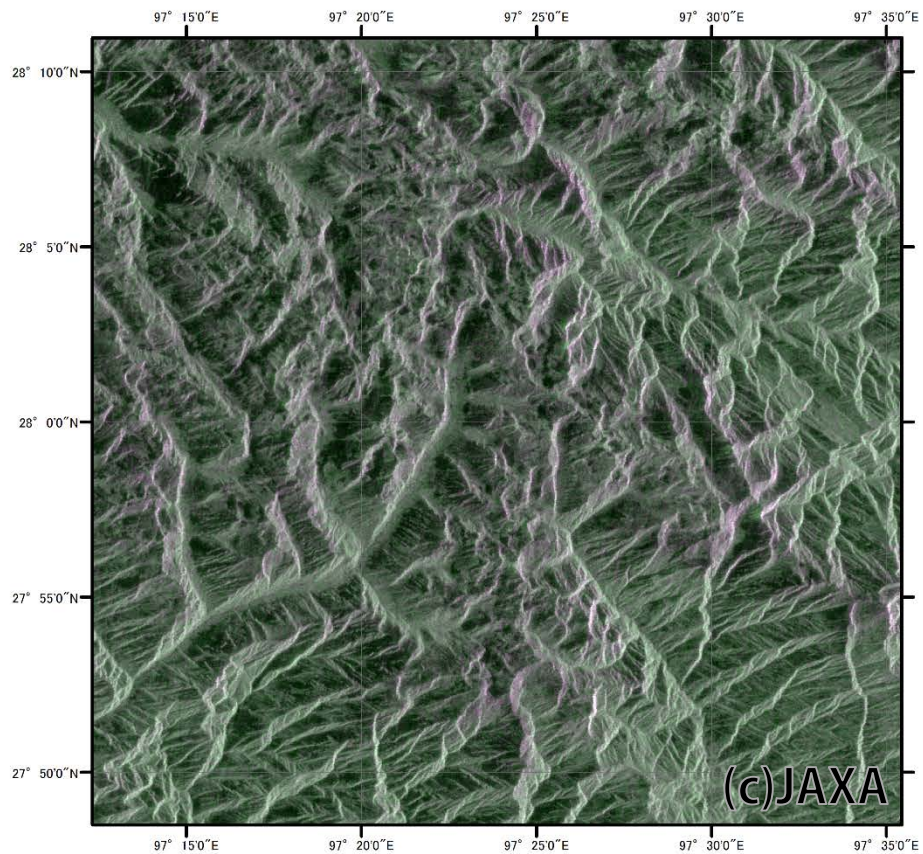
ALOS-2(2016/2/28)



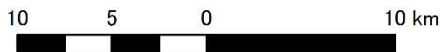
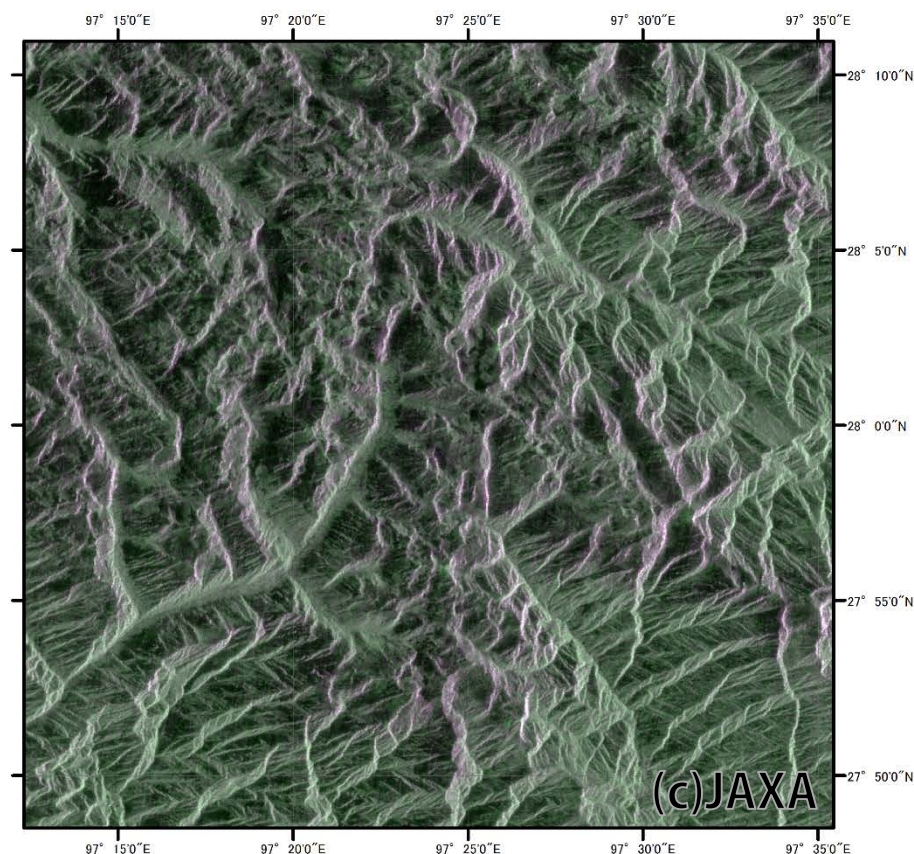
No significant change area detected.
(A little color change may be caused by a little change of soil water.)

Analysis 2 Extend 2

ALOS-2(2015/12/6)



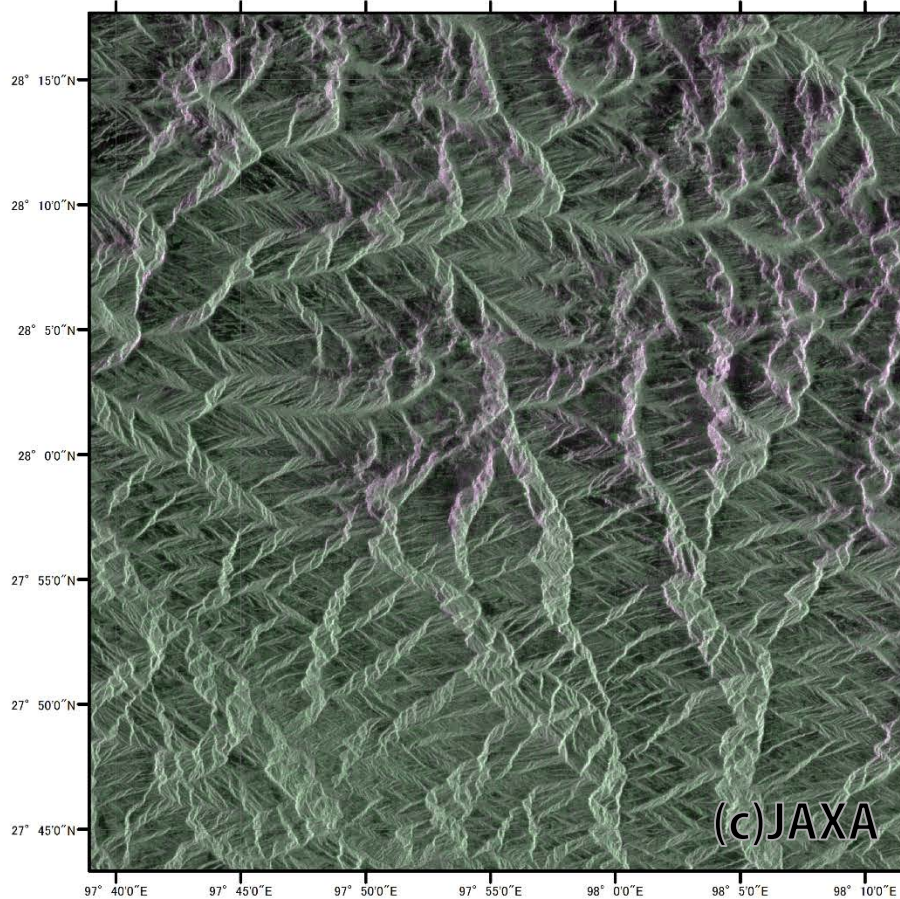
ALOS-2(2016/2/28)



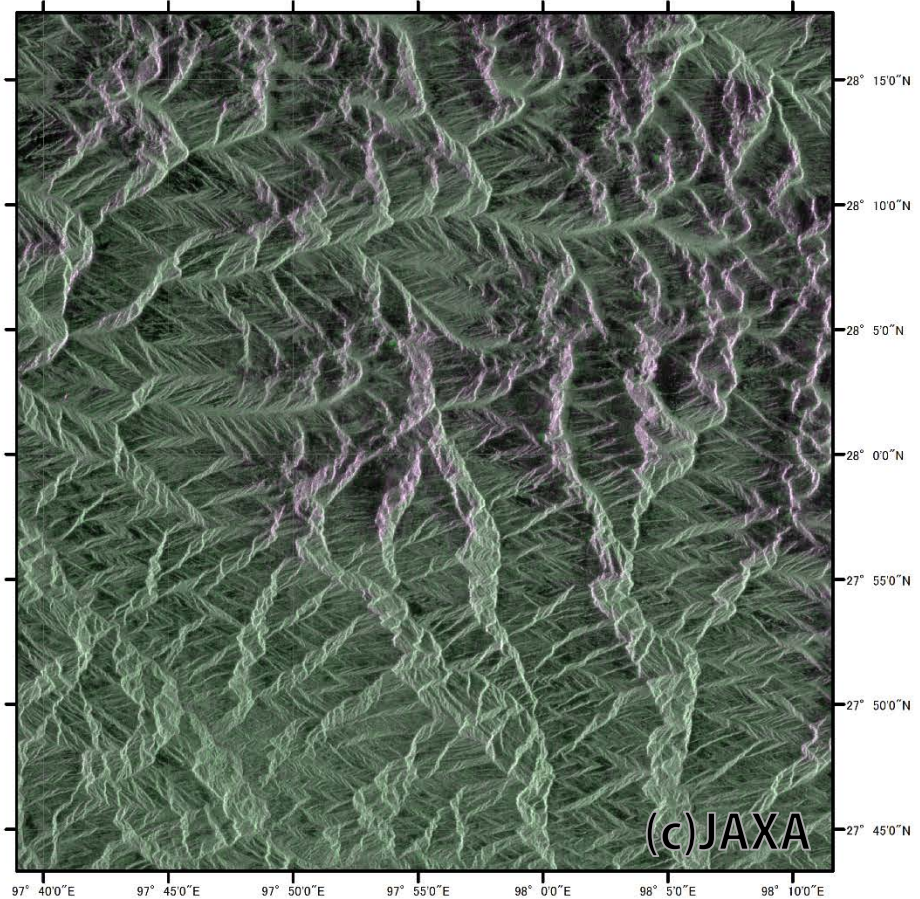
No significant change area detected.
(A little color change may be caused by a little change of local incidence angle.)

Analysis 2 Extend 3

ALOS-2(2015/12/6)



ALOS-2(2016/2/28)



No significant change area detected.
(A little color change may be caused by a little change of local incidence angle.)

Conclusion

- We analyzed ALOS-2 emergency observation data and planned observation about Myanmar Glacier.
- Significant (or Deadly) Glacial Lake is **NOT** identified in this analysis.
- We can **NOT** identify the origin of river expansion in this analysis.

Acknowledgement

- This result is initial analysis, so that may change by further analysis.