


Landslide in Kohistan District, Pakistan

Sentinel Asia

Introduction

- A massive landslide struck at least seven houses in Kohistan district on Monday morning, burying alive at least 30 people.
- Date of Occurrence: 04/Apr/2016
- Pre Image: 25/Mar/2015 ALOS PALSAR (HH/HV)
- Post Image: 06/Apr/2016 ALOS PALSAR (HH/HV)

Nature's fury: Rain heaps misery on K-P



A view of Alpuri road due to landsliding in Besham, Shangla district. PHOTO: INP

DIR / KOHISTAN: Another 32 people died on Monday as heavy rain continued to batter northern Pakistan for a second consecutive day, taking the two-day death toll from the unusual downpour to 95.

At least 25 people – mostly women and children – were feared dead when a massive landslide triggered by incessant rain slammed into **Othar Nala village, in Kandiya tehsil of Kohistan district**, burying several houses under tons of mud and huge boulders.

working with rawad Khan

2 PM Nawaz's family hit back after Panama Papers leak

3 10 busiest airports in the world

4 Panama Papers: A coup against the Sharifs and Bhuttos

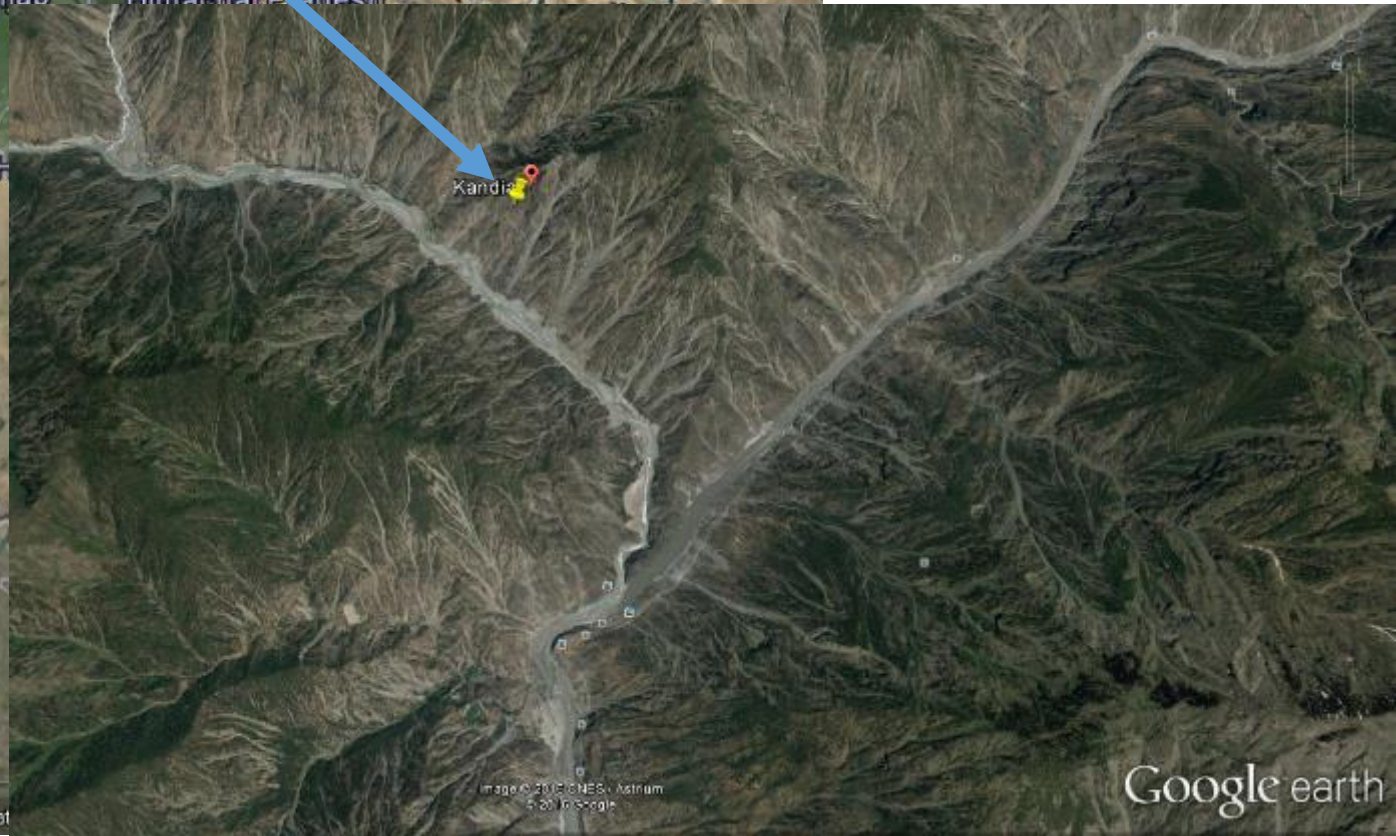
5 The rich list

6 7 badass quotes from Zulfikar Ali Bhutto

According to News Reports
Landslide was occurred in
Kandiya Tehsil of Kohistan
District



Location of Kandiya Tehsil
of Kohistan District





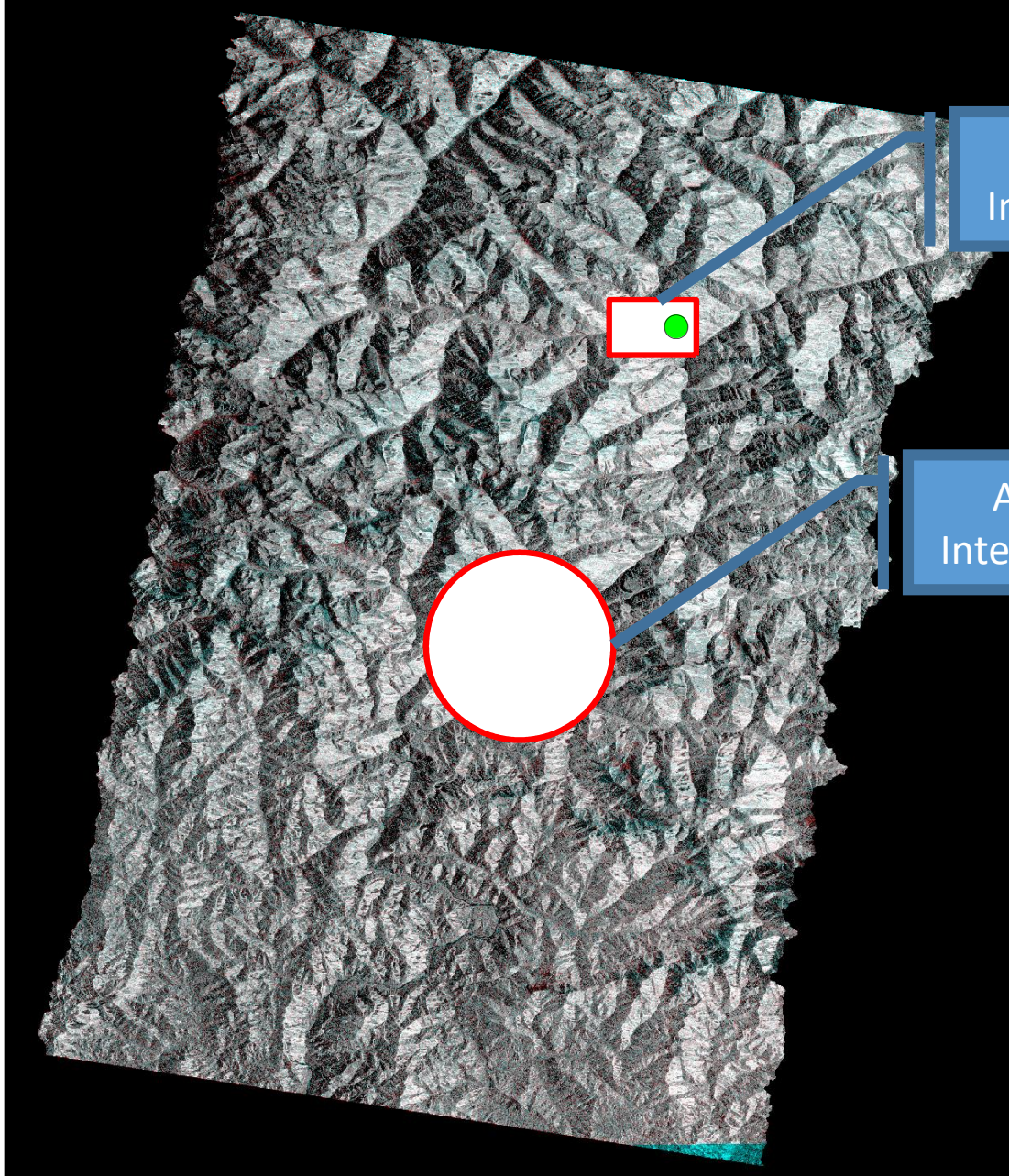
Kandia

Houses

Houses

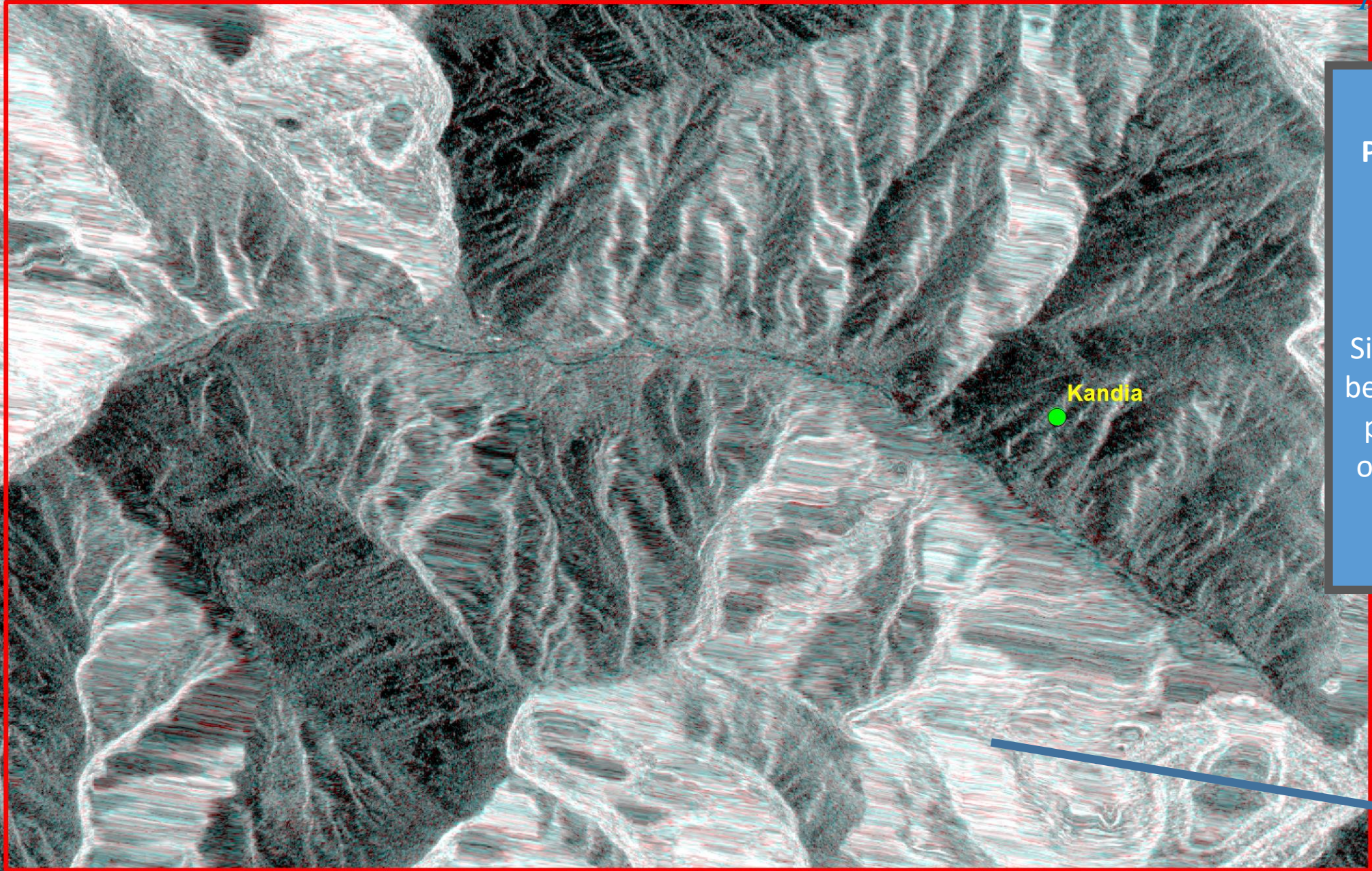
Image © 2016 CNES/Astrum
© 2016 Google

Google earth



Area of Interest (AoI)

Area of Interest (AoI)



**Post-Post-Pre False
Color Composite
Image of HH
Polarization**

Significant difference
between Pre and Post
pixel value was not
observed to identify
Landslide area

Geometric
Distortions

Post-Post-Pre False Color Composite Image of HV Polarization

Significant difference between Pre and Post pixel value was not observed to identify Landslide area

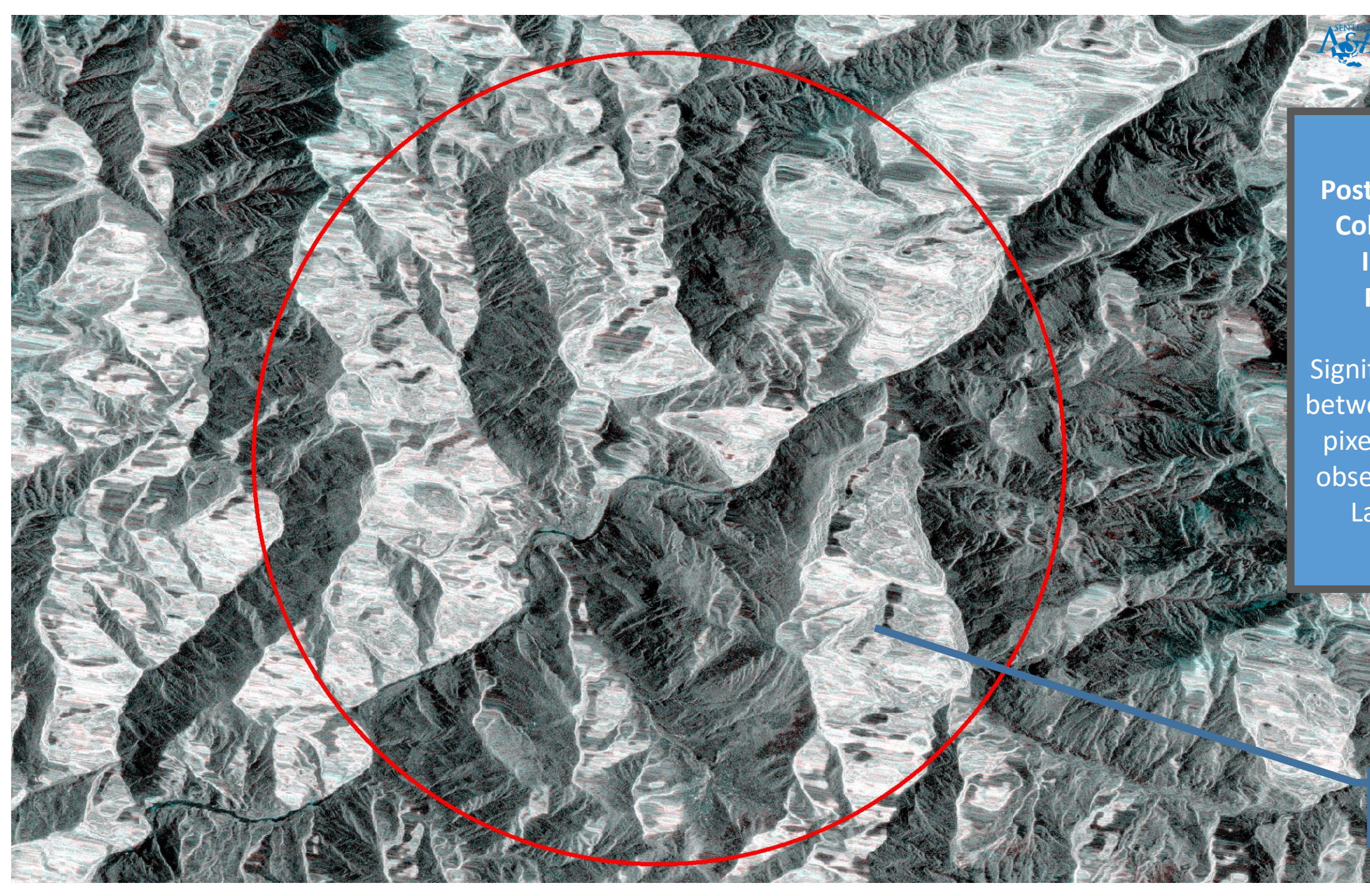
Kandla

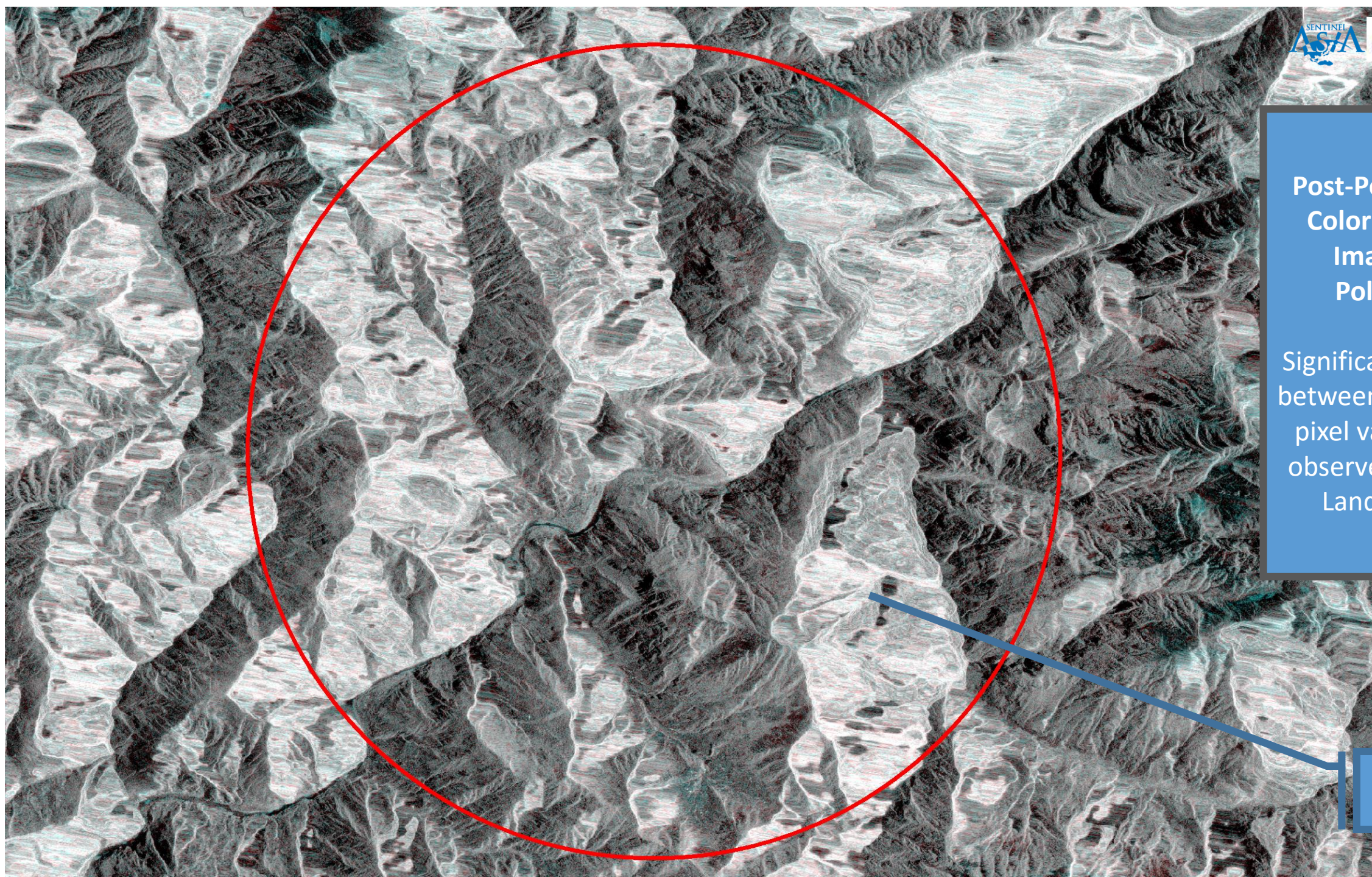
Geometric Distortions

**Post-Post-Pre False
Color Composite
Image of HH
Polarization**

Significant difference
between Pre and Post
pixel value was not
observed to identify
Landslide area

Geometric
Distortions





**Post-Post-Pre False
Color Composite
Image of HV
Polarization**

Significant difference
between Pre and Post
pixel value was not
observed to identify
Landslide area

Geometric
Distortions