

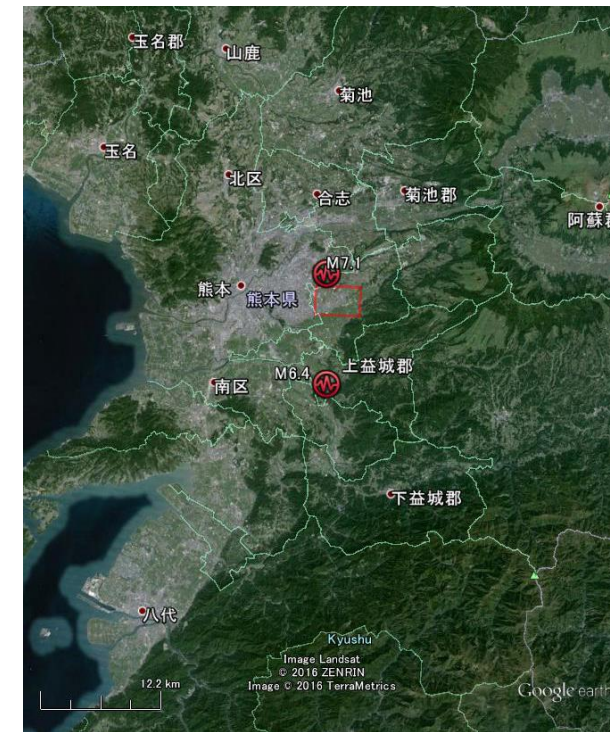
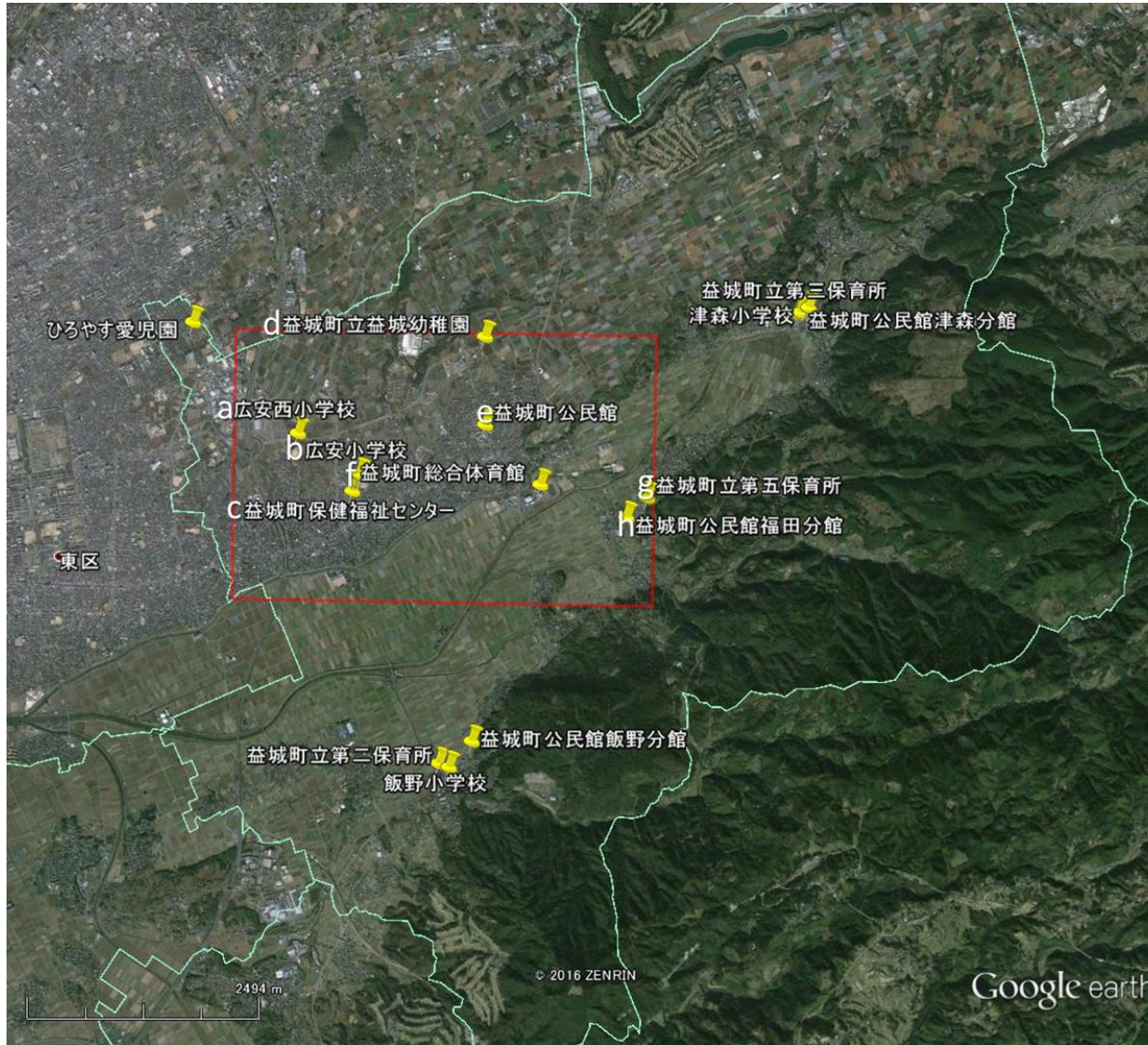
Monitoring of evacuees' cars in the shelters in Mashiki Town from optical satellite images

April 25, 2016

Wen LIU and Fumio Yamazaki
Chiba University



Locations of shelters in Mashiki Town, Kumamoto Pref., Japan

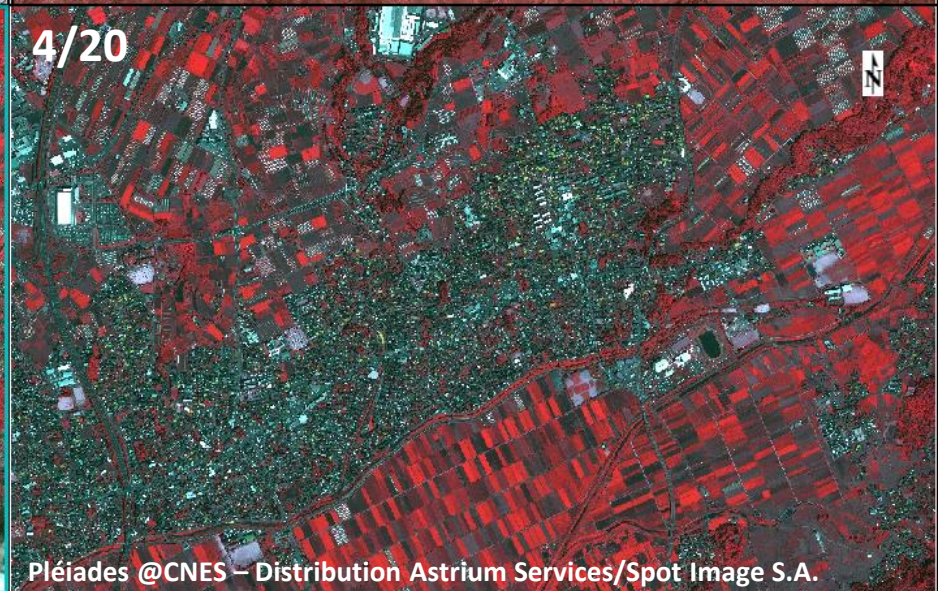
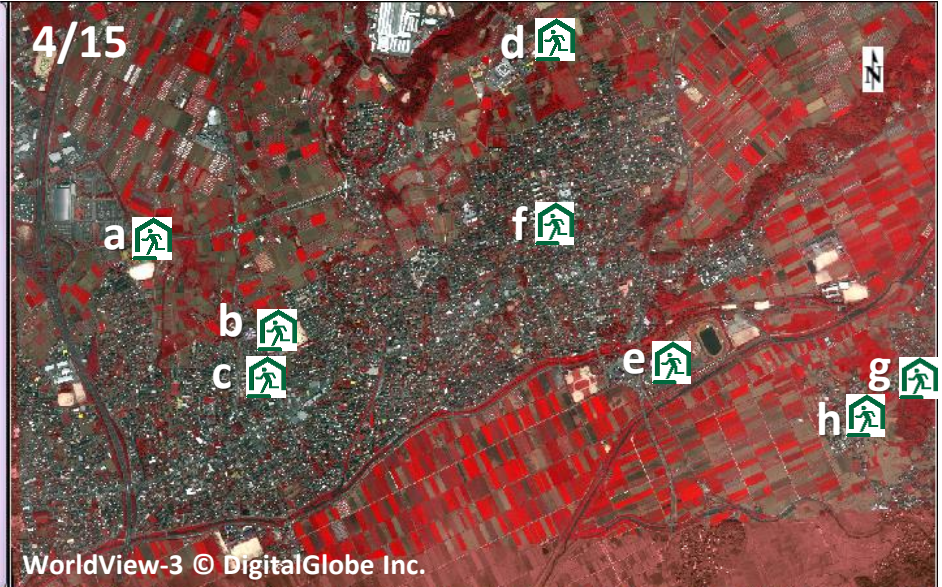
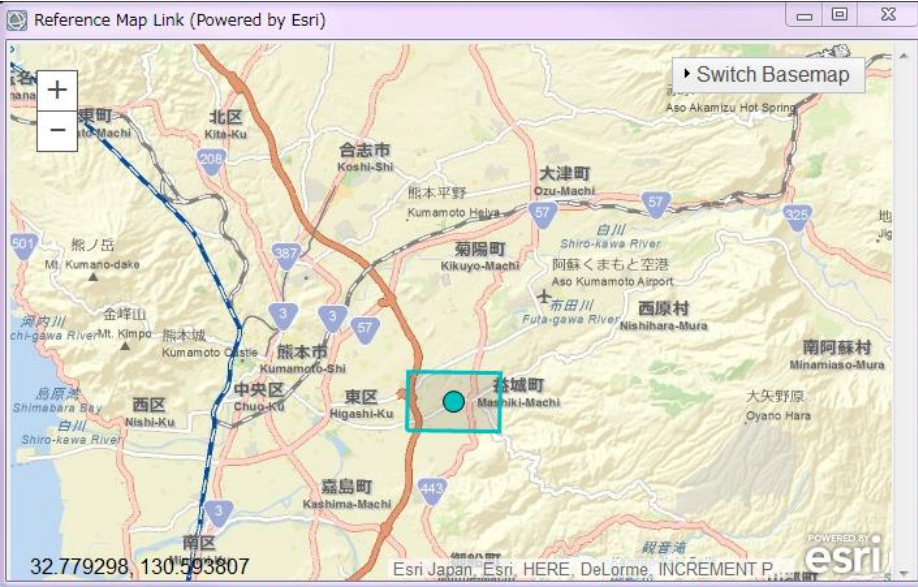


■ The study area

There are 15 official shelters in Mashiki Town, Kumamoto Pref., Japan. Eight shelters locate in the common areas of three temporal optical satellite images.



Shelters in the study area and three VHR images



a. Hiroyasu-Nishi Primary School

広安西小学校



AIRBUS



4/15



4/17



4/20



Pléiades @CNES – Distribution Astrium Services/Spot Image S.A.

Pléiades @CNES – Distribution Astrium Services/Spot Image S.A.

b. Hiroyasu Primary School 広安小学校

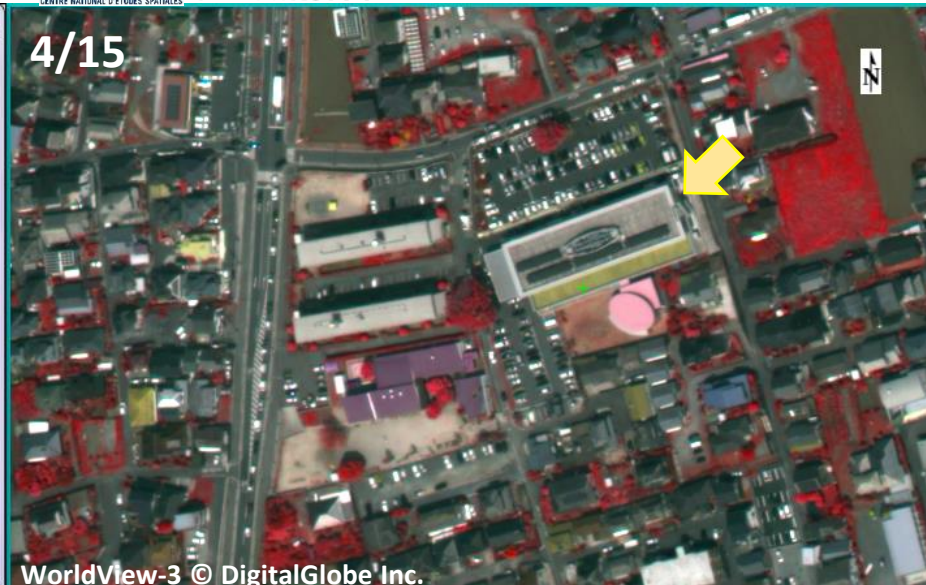


C. Mashiki Health and Welfare Center

益城町保健福祉センター



AIRBUS



d. Mishiki Kinder Garten

益城町立益城幼稚園



AIRBUS



e. Moshiki Community Center

益城町公民館



AIRBUS



f. Mashiki Gymnasium 益城町総合体育館



AIRBUS



g. Community Center Fukuda Branch

益城町公民館福田分館



h. Mashiki No. 5 Nursery 益城町立第五保育所



AIRBUS



Change of the number of vehicles parking in the shelters in Mashiki Town in the three-temporal satellite images

No.	Name of the shelters	Name of the shelters in Japanese	From 4/15 to 4/17	From 4/17 to 4/20
a	Hiroyasu-Nishi Primary School	広安西小学校	Increase	Decrease
b	Hiroyasu Primary School	広安小学校	Increase	Increase
c	Mashiki Health and Welfare Center	益城町保健福祉センター	Increase	Increase
d	Mishiki Kinder Garten	益城町立益城幼稚園	Increase	No change
e	Moshiki Community Center	益城町公民館	Decrease	Increase
f	Mashiki Gymnasium	益城町総合体育館	Increase	Increase
g	Community Center Fukuda Branch	益城町公民館福田分館	No change	Increase
h	Mashiki No. 5 Nursery	益城町立第五保育所	No change	No change