



平成28年熊本地震 FORMOSAT-2衛星画像判読結果

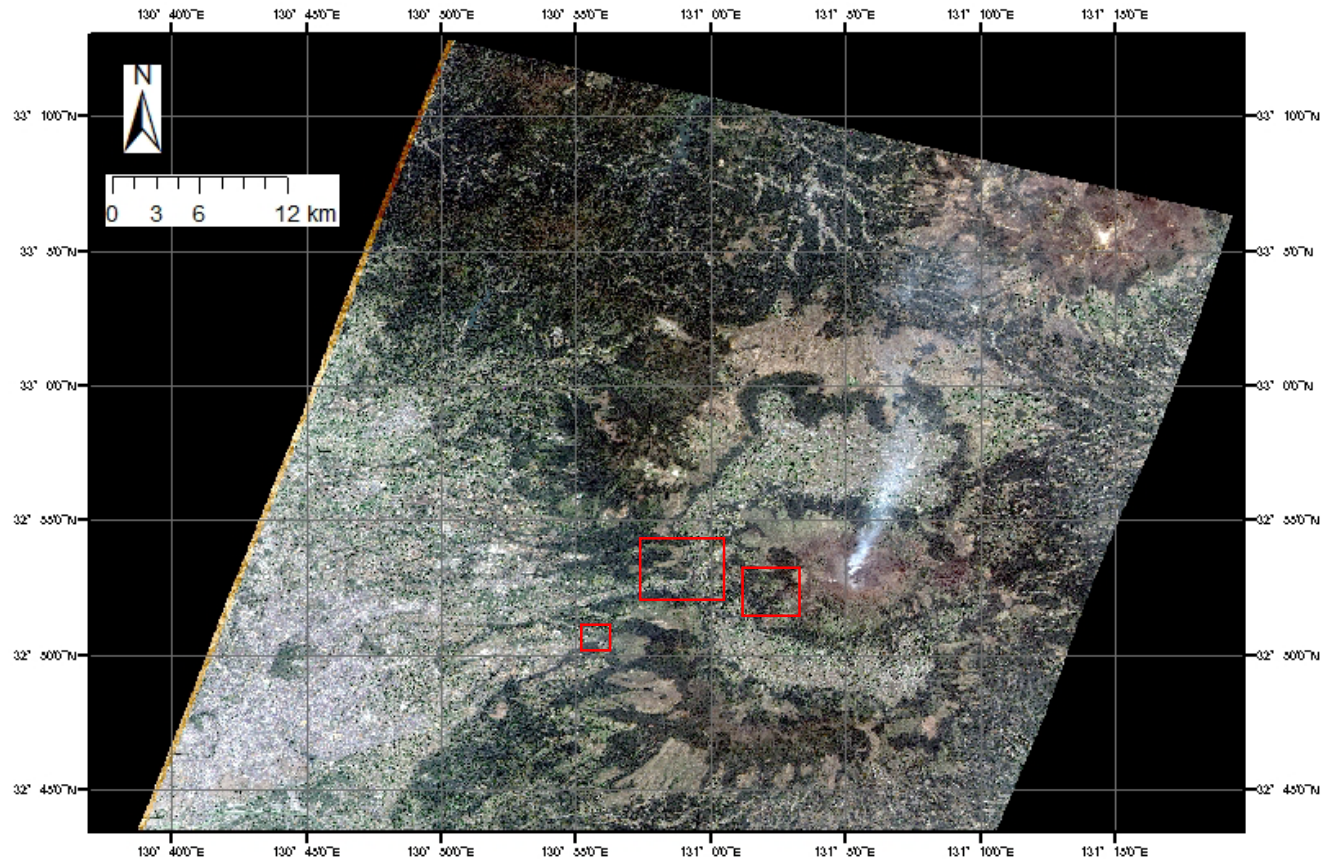
**Image Interpretation Result of FORMOSAT-2 Image of
The 2016 Kumamoto Earthquake, Japan**

**Japan Aerospace Exploration Agency (JAXA)
Remote Sensing Technology Center of Japan
(RESTEC)**

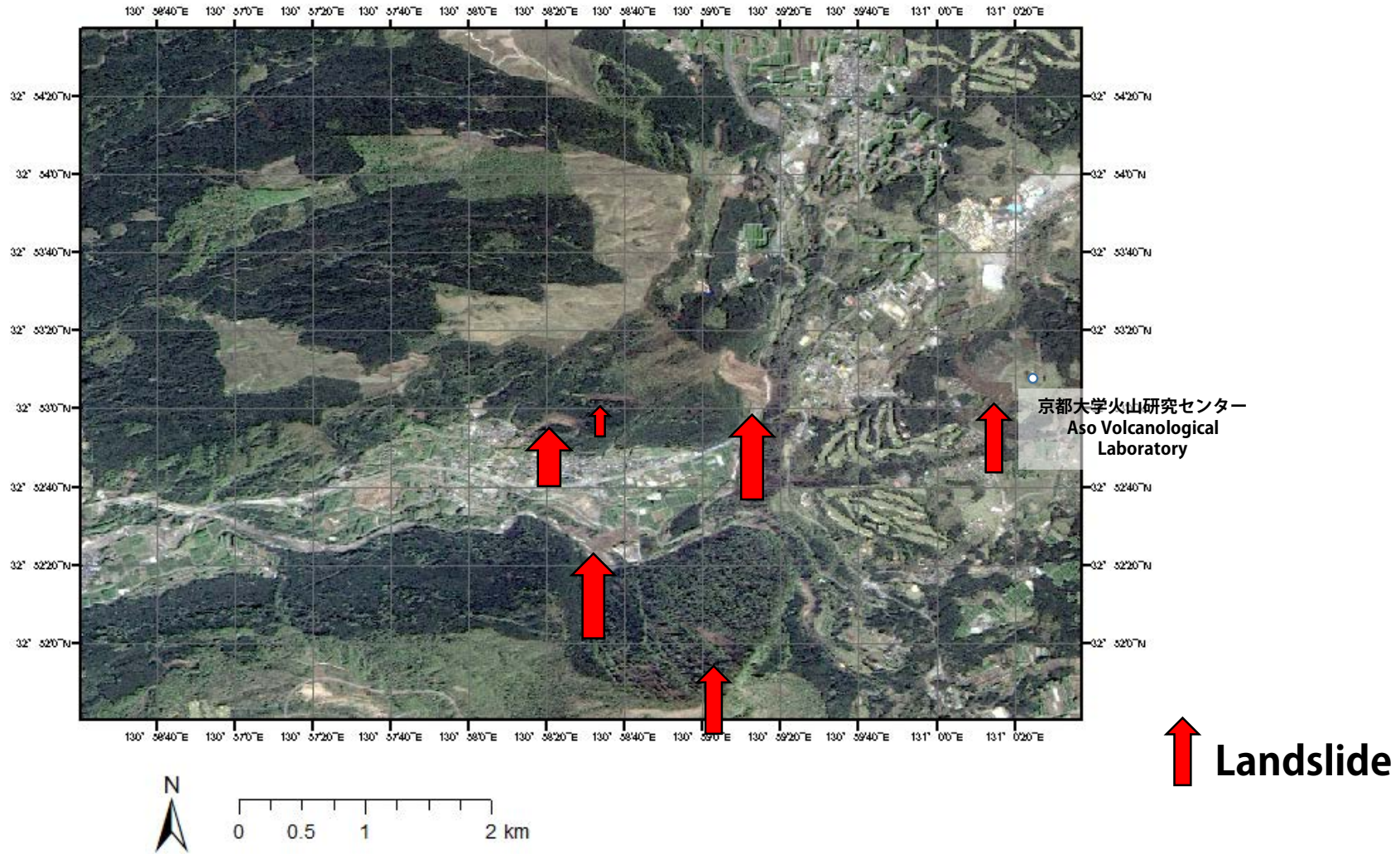
Introduction

- **Summary of data used in this analysis**

	<i>Obs. date</i>	<i>Mode</i>	<i>Satellite/Sensor</i>	<i>Observation Time</i>	<i>Off-nadir angle</i>	<i>Resolution</i>
Post-disaster	2016/04/20	-	FORMOSAT-2 /RSI	02:00(UTC)	40.047777	2.0m

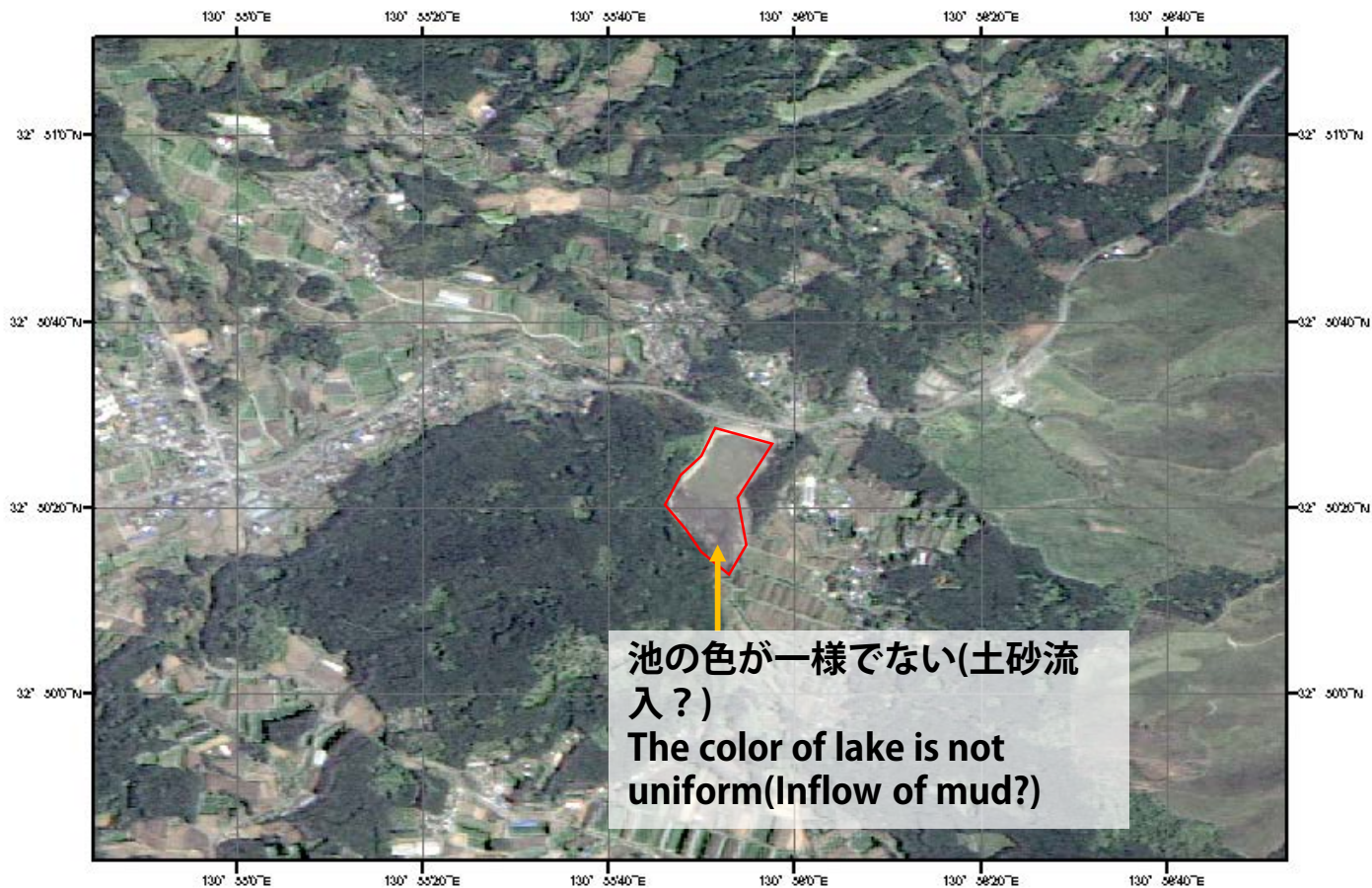


AOI 1 阿蘇大橋崩落現場周辺 Collapse of Bridge of Aso



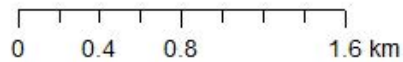
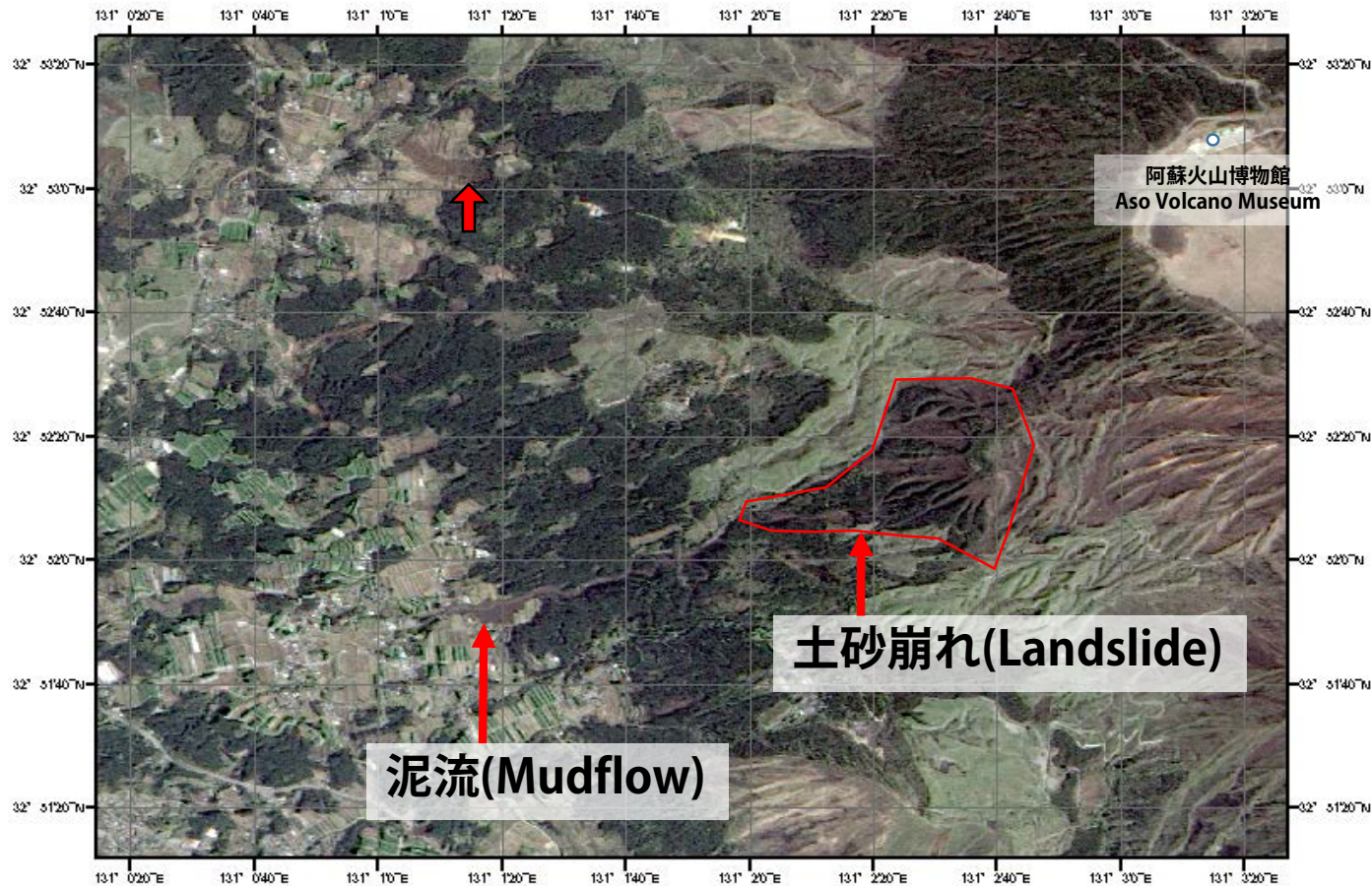
土砂崩れが複数箇所で見られることがわかる
Many Landslide can detect in this scene.

AOI 2 大切畑ダム Ohkiri-hata dam



0 0.275 0.55 1.1 km

AOI 3 南阿蘇村泥流発生地点 Source of Mudflow at Minami Aso



上流の土砂崩れにより、泥流が発生していることがわかる
Mudflow occurs by landslides of upper reaches