

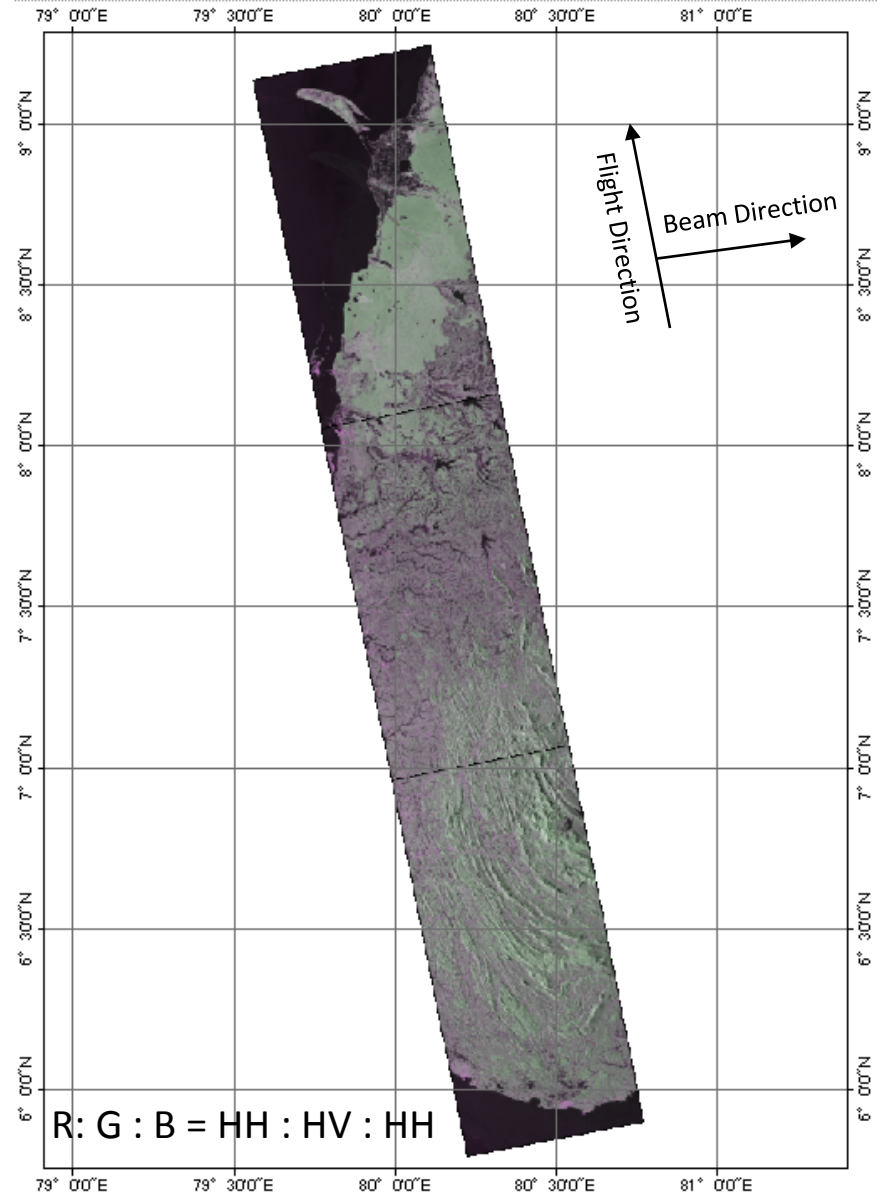


Initial Analysis results of Flood Situation in Sri Lanka using ALOS-2/PALSAR-2

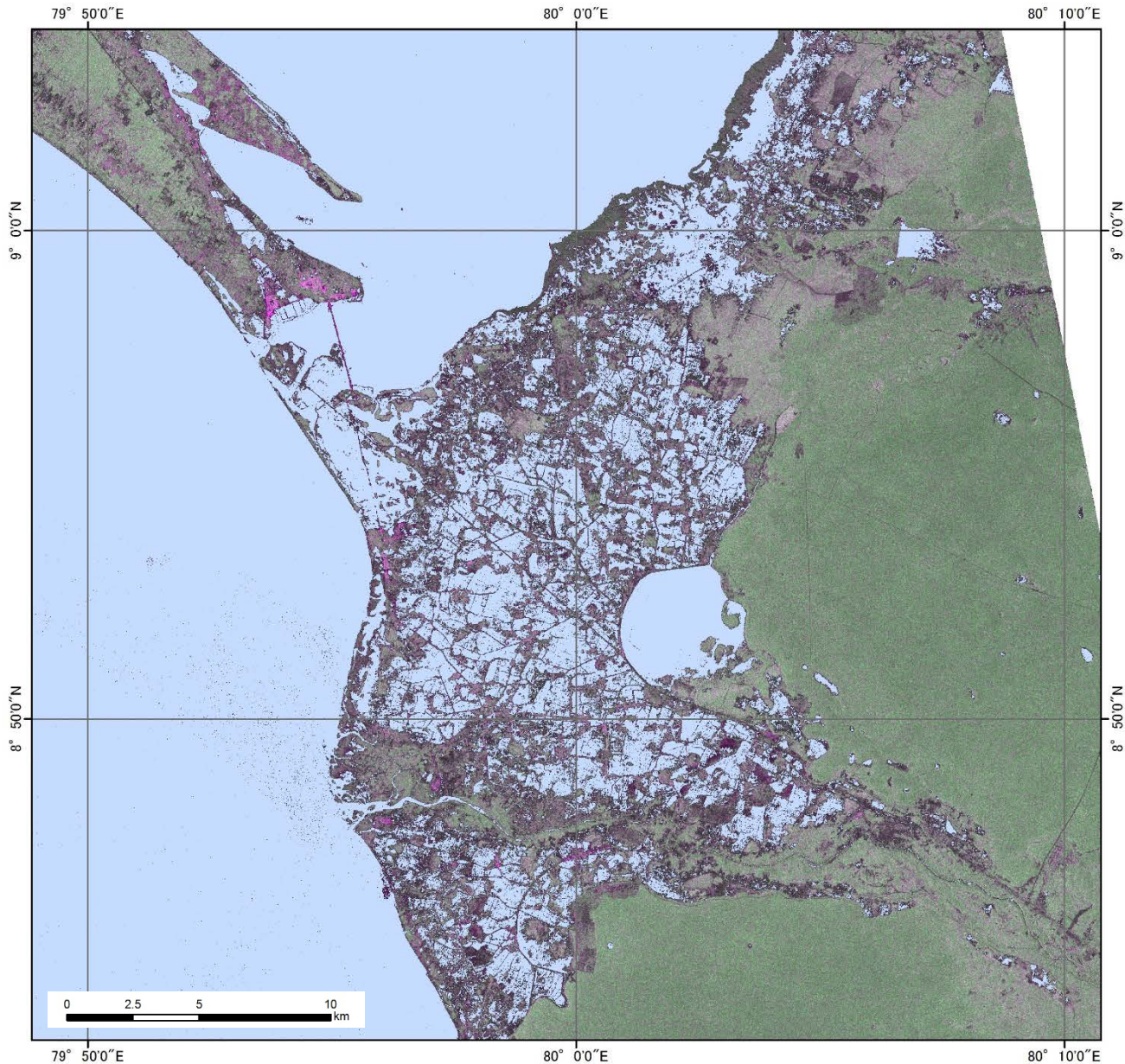
**Japan Aerospace Exploration Agency (JAXA)
Remote Sensing Technology Center of Japan
(RESTEC)**

Utilized Data

Contents	Description
Obs.Date	2016/05/16 18:54 (UTC)
Mode	FBD
Satellite/Sensor	ALOS-2/PALSAR-2
Pol.	HH + HV
Flight Direction	Ascending
Off-nadir angle	39.3°
Beam Direction	Right



Water extraction results



Probably
Water area

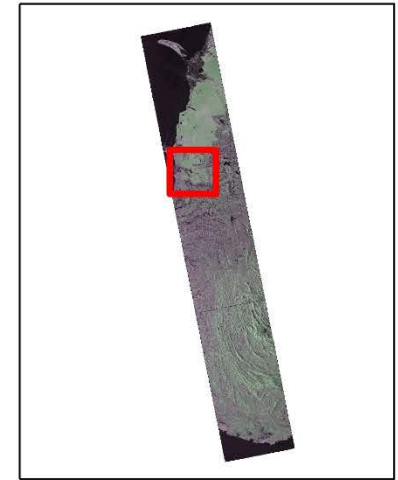
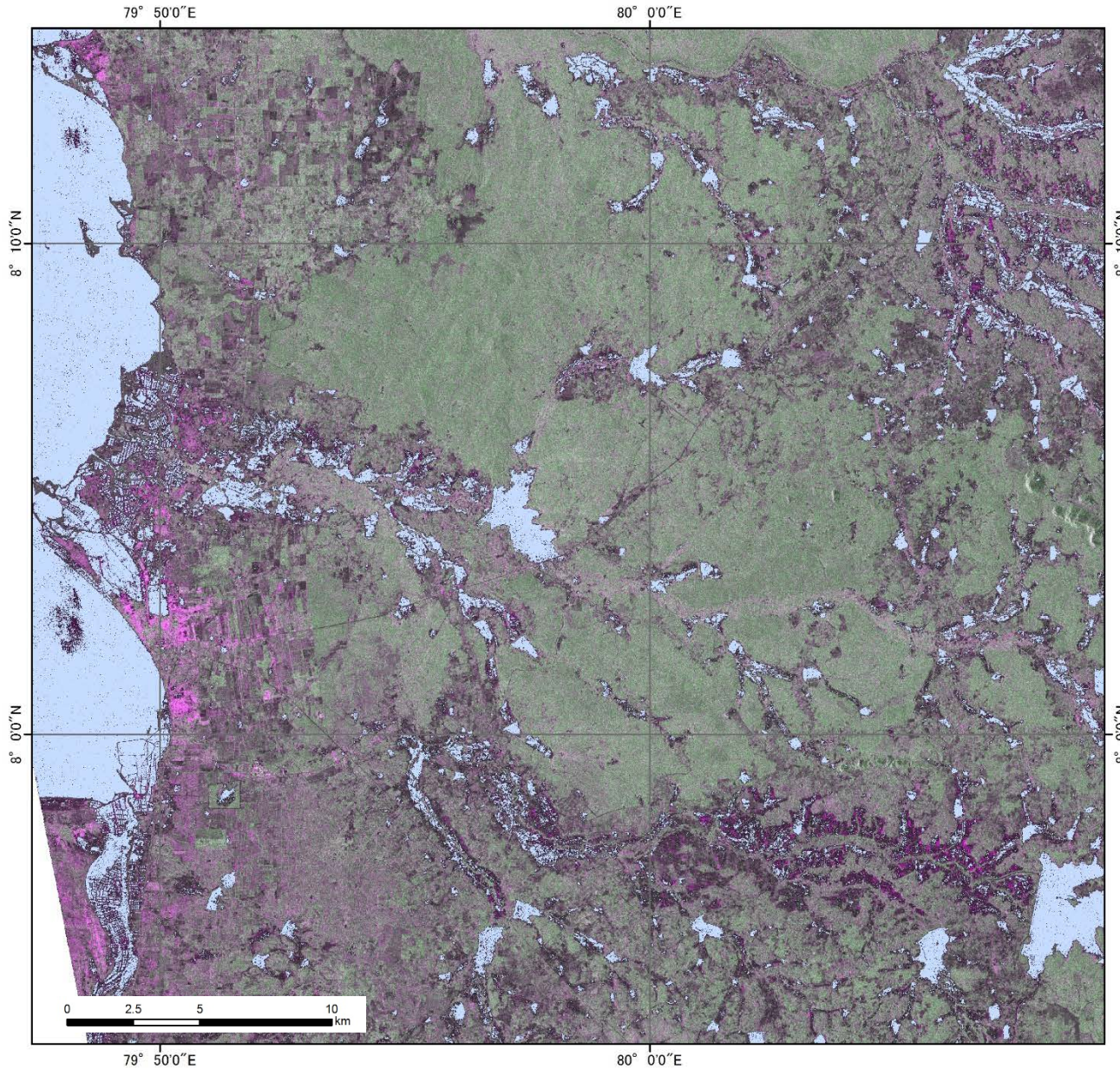


There is a feature a water area suits darkly by a radar. The result from which the part which indicates the feature like the feature of the existence water area was picked out.

However, the flat objects of a ground, a road, a bare land look darkly like area of the water. When it is not flooded, it may be determined for inundation level.

Also it includes the marine part in the extraction results.

Water extraction results



Probably
Water area

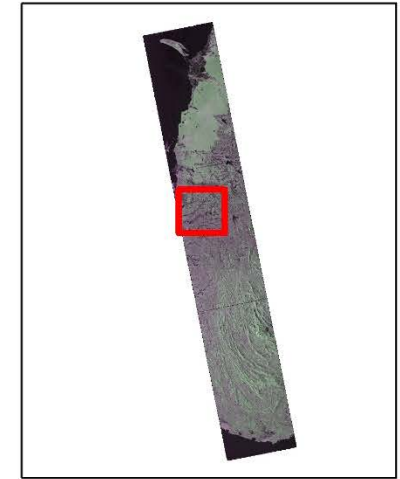
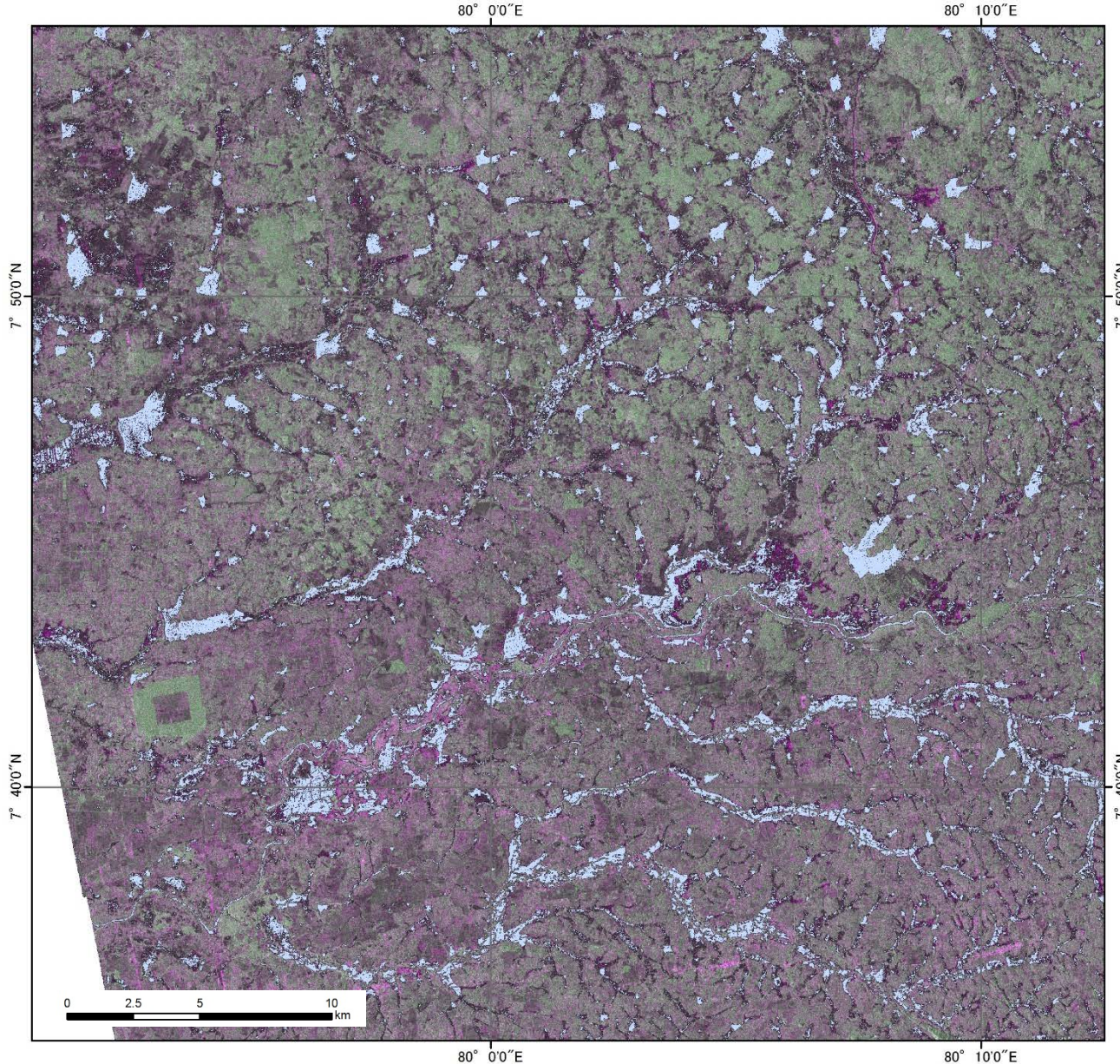


There is a feature a water area suits darkly by a radar. The result from which the part which indicates the feature like the feature of the existence water area was picked out.

However, the flat objects of a ground, a road, a bare land look darkly like area of the water. When it is not flooded, it may be determined for inundation level.

Also it includes the marine part in the extraction results.

Water extraction results



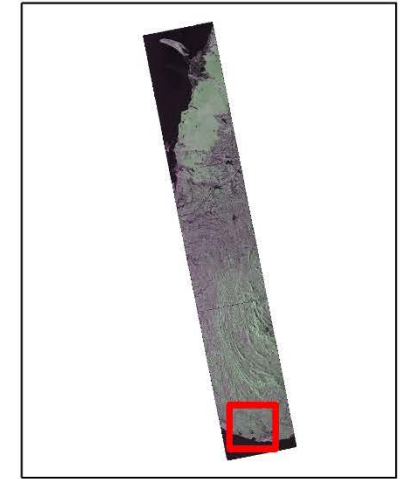
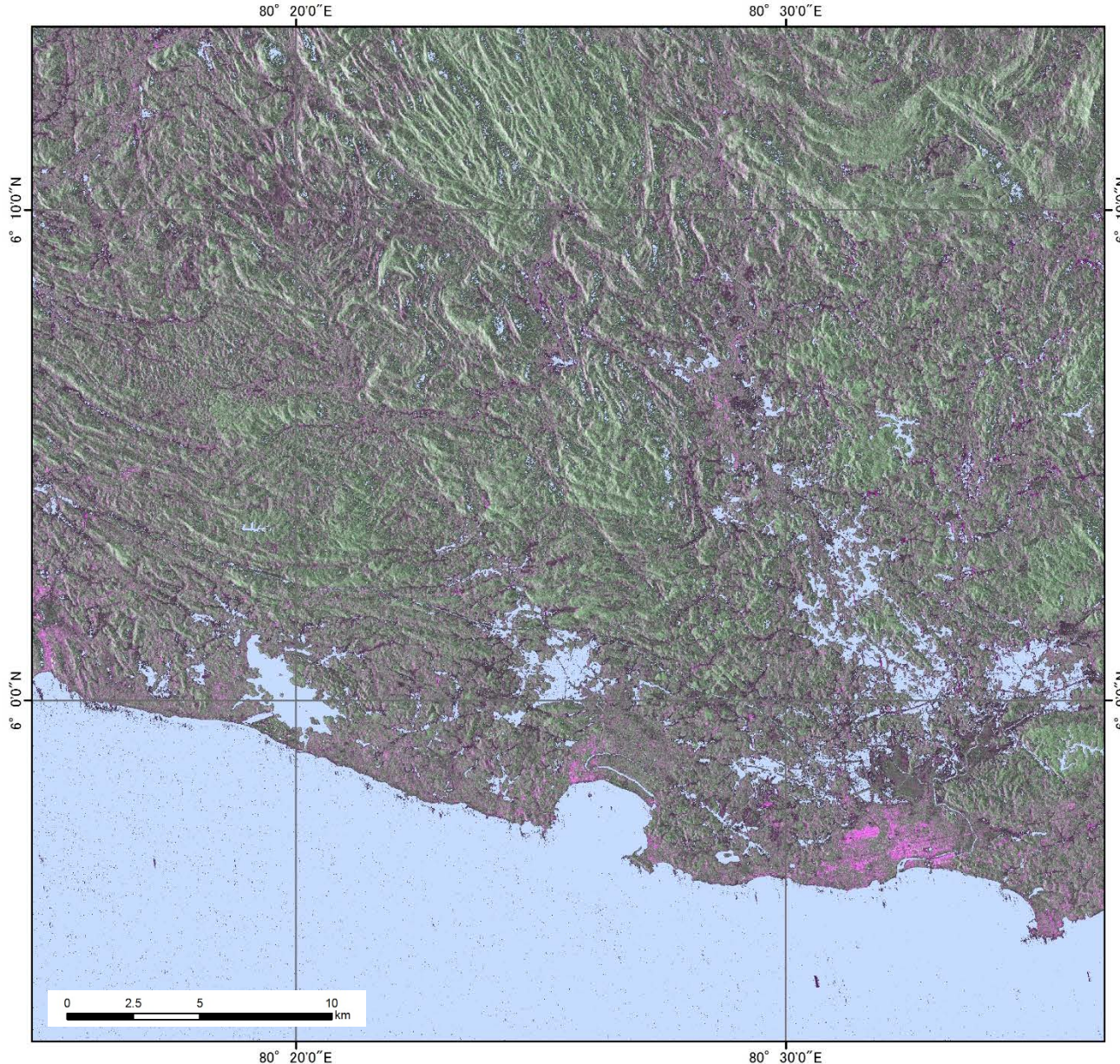
Probably
Water area



There is a feature a water area suits darkly by a radar. The result from which the part which indicates the feature like the feature of the existence water area was picked out.

However, the flat objects of a ground, a road, a bare land look darkly like area of the water. When it is not flooded, it may be determined for inundation level.

Water extraction results



Probably
Water area



There is a feature a water area suits darkly by a radar. The result from which the part which indicates the feature like the feature of the existence water area was picked out.

However, the flat objects of a ground, a road, a bare land look darkly like area of the water. When it is not flooded, it may be determined for inundation level.

Also it includes the marine part in the extraction results.