

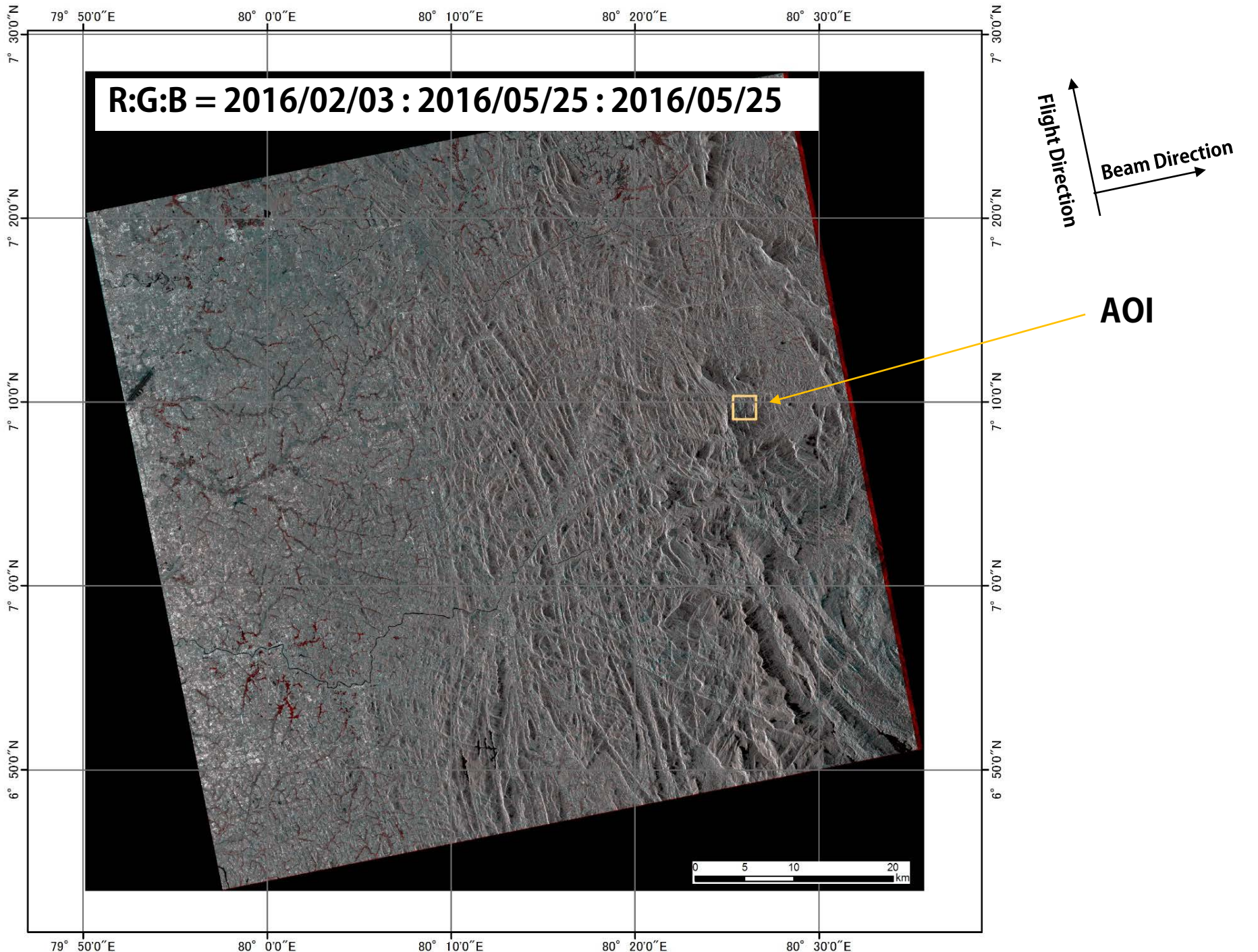


Initial Analysis results of Landslide Situation in Sri Lanka using ALOS-2/PALSAR-2

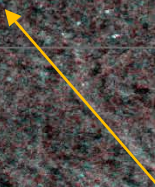
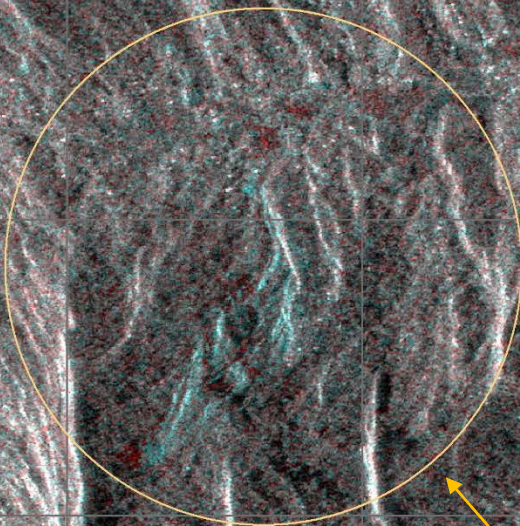
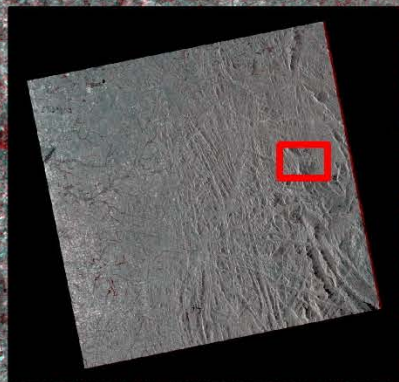
**Japan Aerospace Exploration Agency (JAXA)
Remote Sensing Technology Center of Japan
(RESTEC)**

Utilized Data

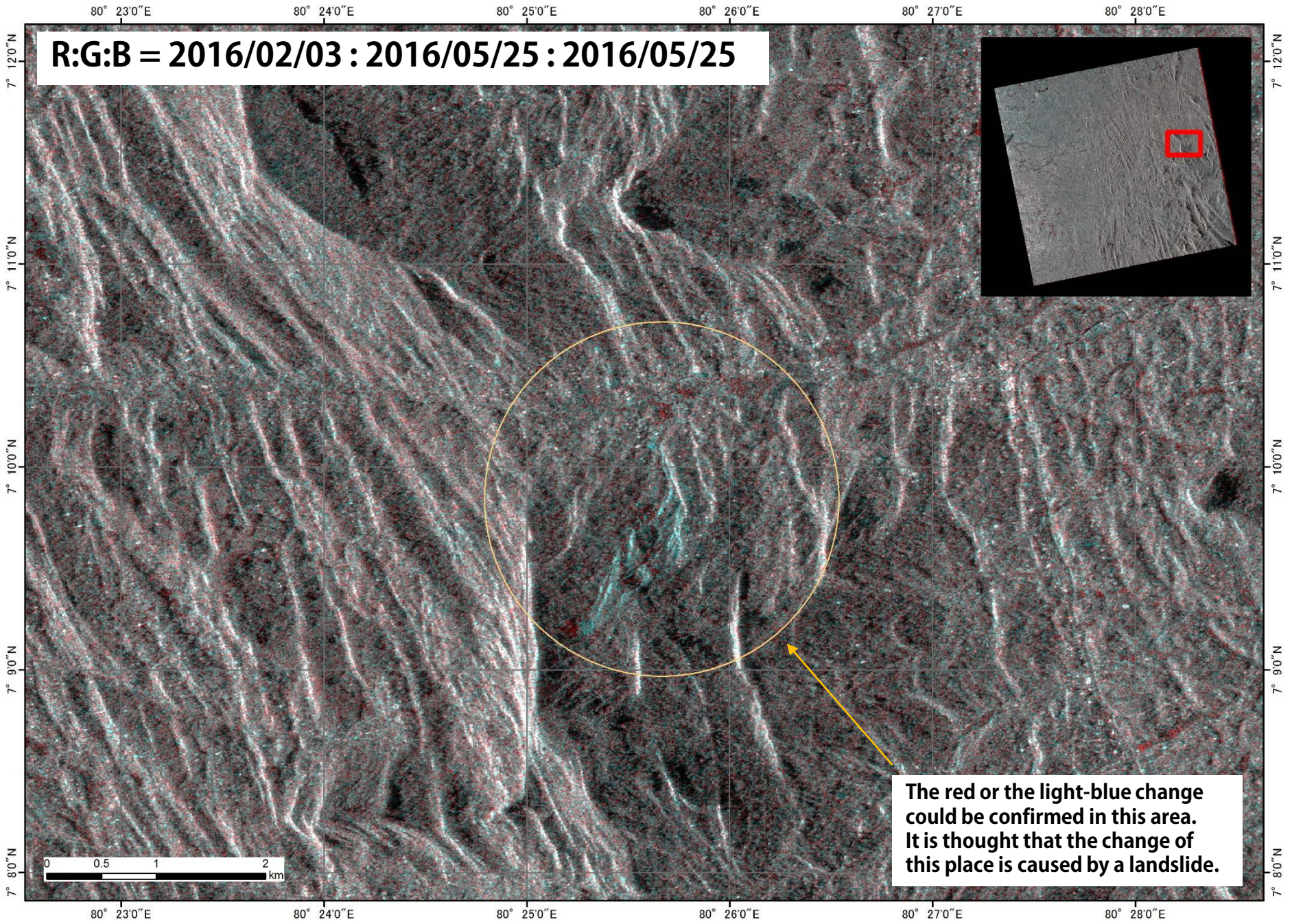
	Obs.Date	Mode	Satellite/Sensor	Pol.	Flight Direction	Off-nadir angle	Beam Direction
Pre-disaster	2016/2/3	FBD	ALOS-2/ PALSAR-2	HH+ HV	Ascending	28.2°	Right
Post-disaster	2016/5/25	FBD	ALOS-2/ PALSAR-2	HH+ HV	Ascending	28.2°	Right



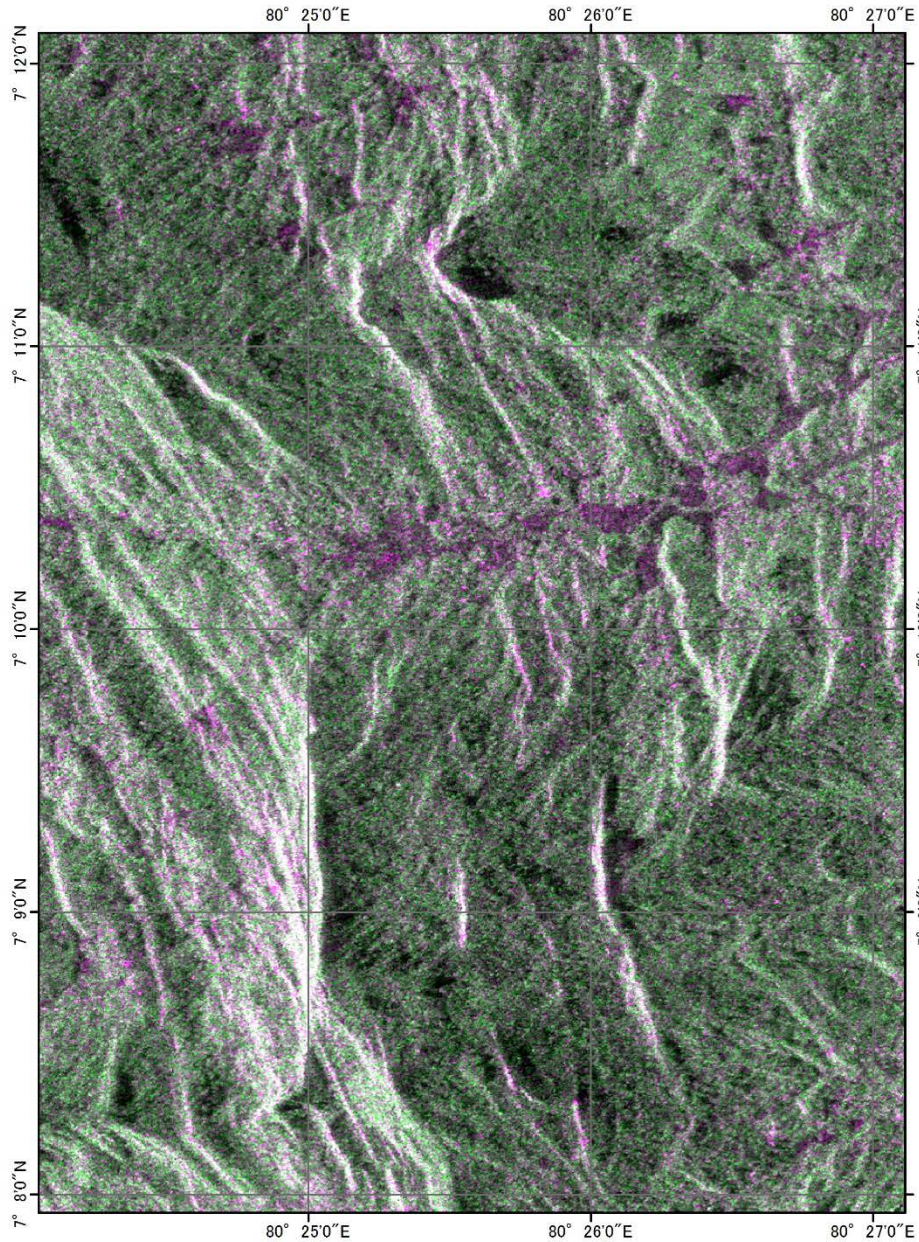
R:G:B = 2016/02/03 : 2016/05/25 : 2016/05/25



The red or the light-blue change could be confirmed in this area. It is thought that the change of this place is caused by a landslide.



Pre-disaster



Post-disaster

