



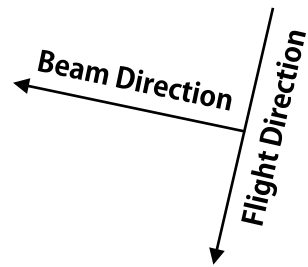
Initial Analysis results of Flood in Indonesia using ALOS-2/PALSAR-2

**Japan Aerospace Exploration Agency (JAXA)
Remote Sensing Technology Center of Japan
(RESTEC)**

Utilized Data

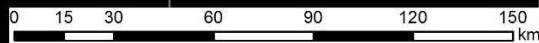
	Obs.Date	Mode	Satellite/Sensor	Pol.	Flight Direction	Off-nadir angle	Beam Direction
Pre-disaster	2016/5/9	WD1	ALOS-2/ PALSAR-2	HH+ HV	Descending	34.9°	Right
Post-disaster	2016/6/20	WD1	ALOS-2/ PALSAR-2	HH+ HV	Descending	34.9°	Right

R:G:B = 2016/05/09 : 2016/06/20 : 2016/06/20

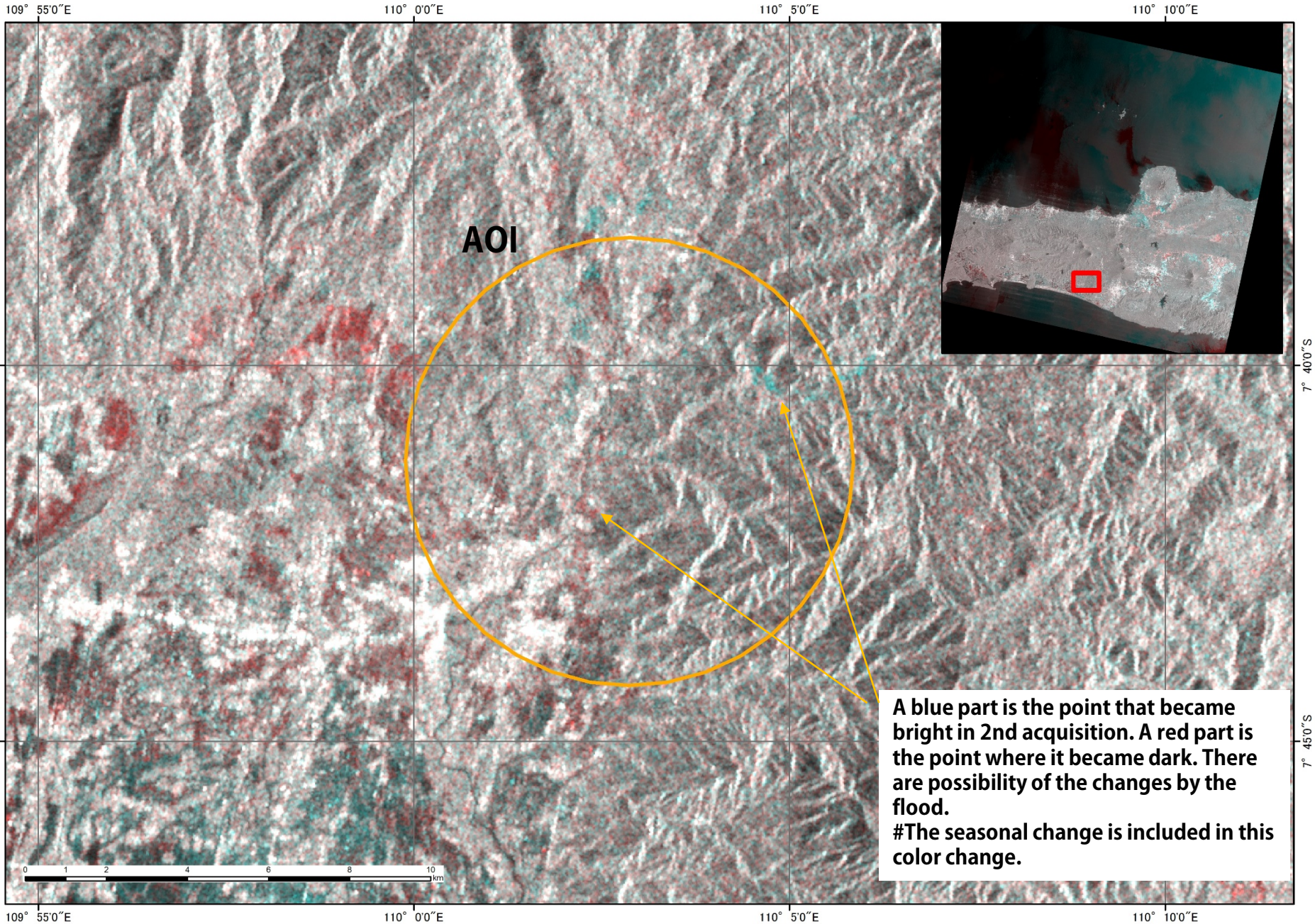


AOI

Coordinates of center point
Latitude : $-7^{\circ} 41' 18.4776''$ N
Longitude : $110^{\circ} 2' 52.3932''$ E
Radius : 5.5 km



R:G:B = 2016/05/09 : 2016/06/20 : 2016/06/20



**A blue part is the point that became bright in 2nd acquisition. A red part is the point where it became dark. There are possibility of the changes by the flood.
#The seasonal change is included in this color change.**