



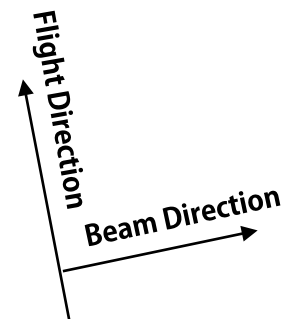
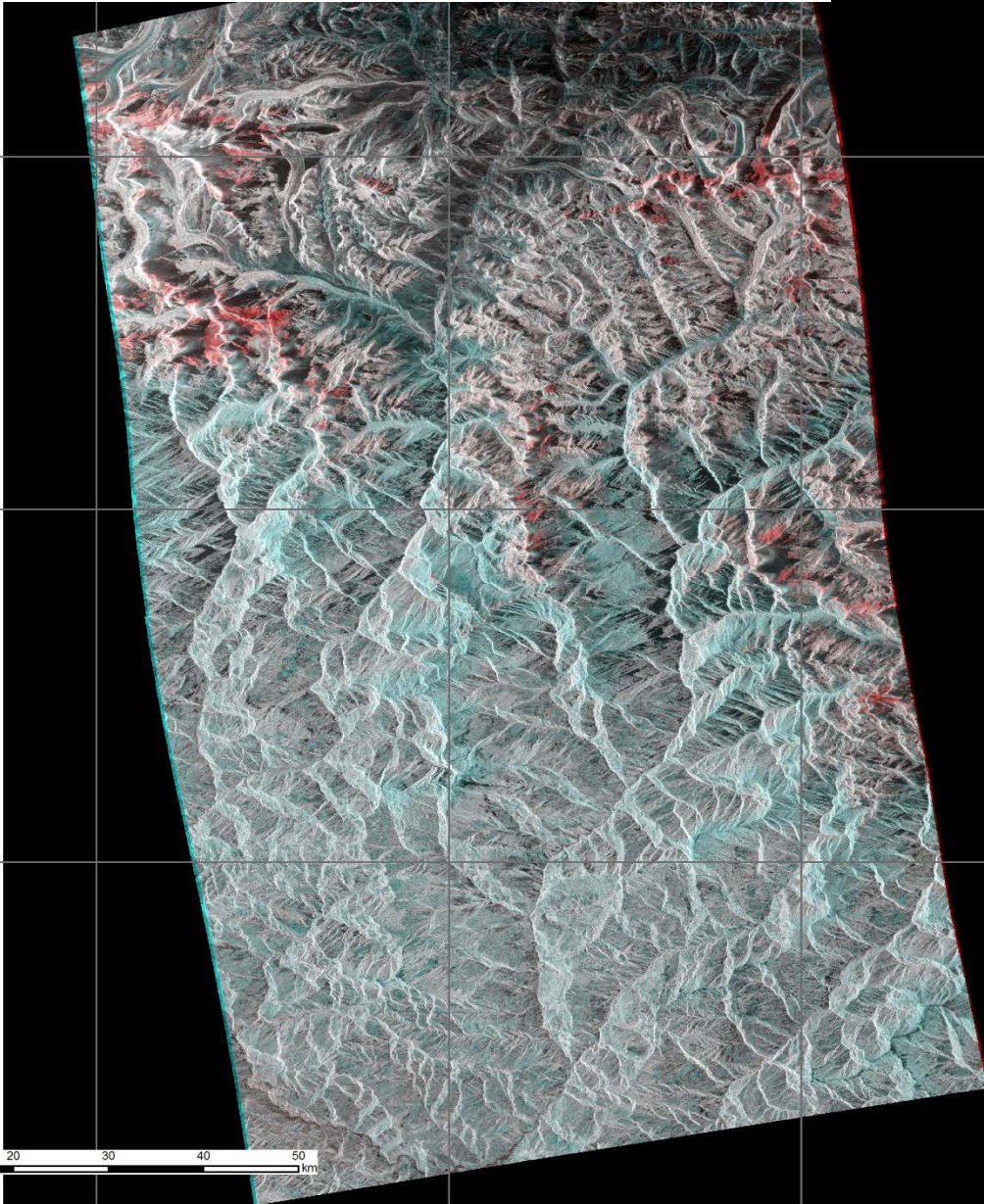
Initial Analysis results of Flood in Nepal using ALOS-2/PALSAR-2

**Japan Aerospace Exploration Agency (JAXA)
Remote Sensing Technology Center of Japan
(RESTEC)**

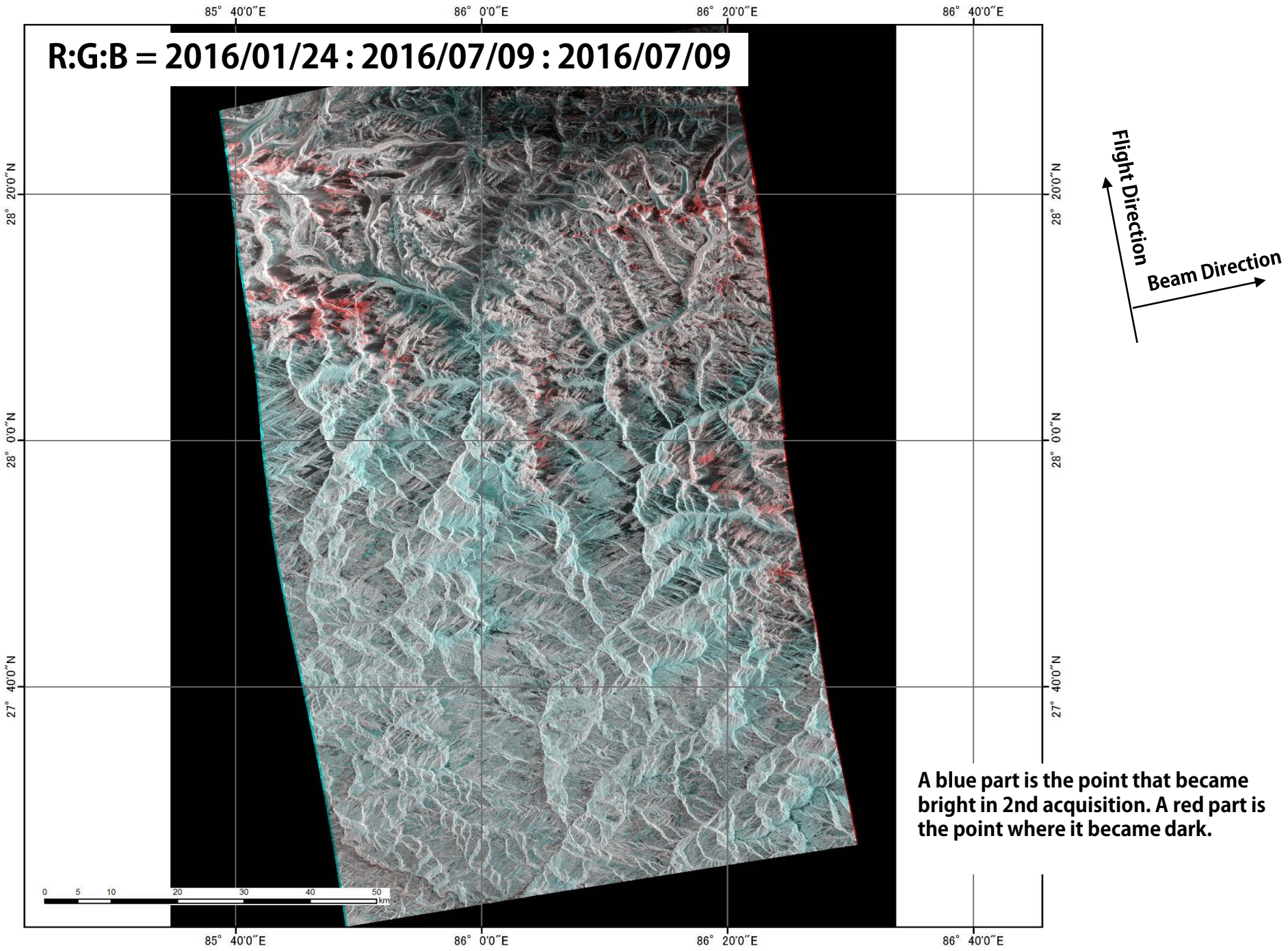
Utilized Data

	Obs.Date	Mode	Satellite/Sensor	Pol.	Flight Direction	Off-nadir angle	Beam Direction
Pre-disaster	2016/1/24	SM3	ALOS-2/ PALSAR-2	HH+ HV	Ascending	36.2°	Right
Post-disaster	2016/7/9	SM3	ALOS-2/ PALSAR-2	HH+ HV	Ascending	36.2°	Right

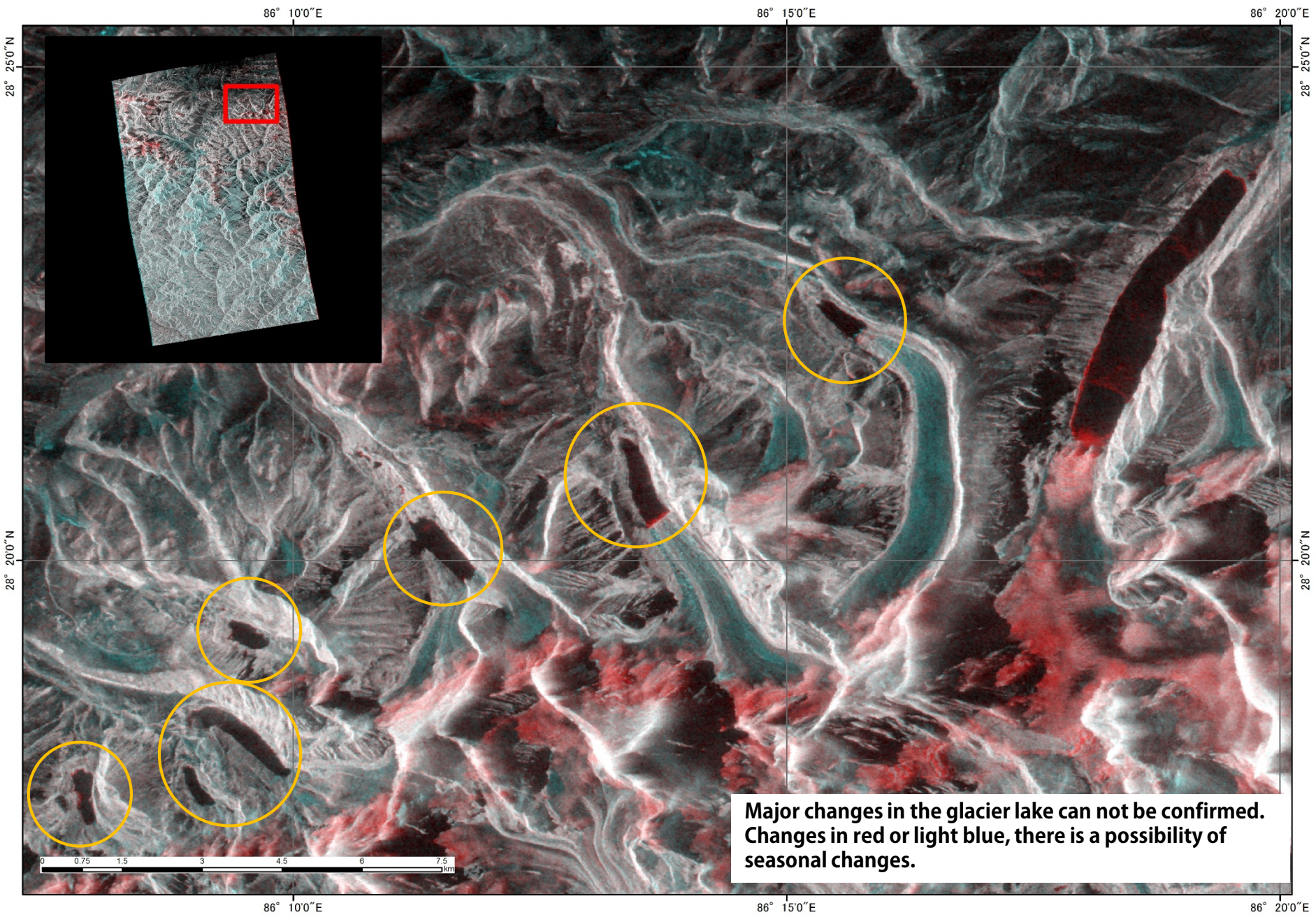
R:G:B = 2016/01/24 : 2016/07/09 : 2016/07/09



A blue part is the point that became bright in 2nd acquisition. A red part is the point where it became dark.

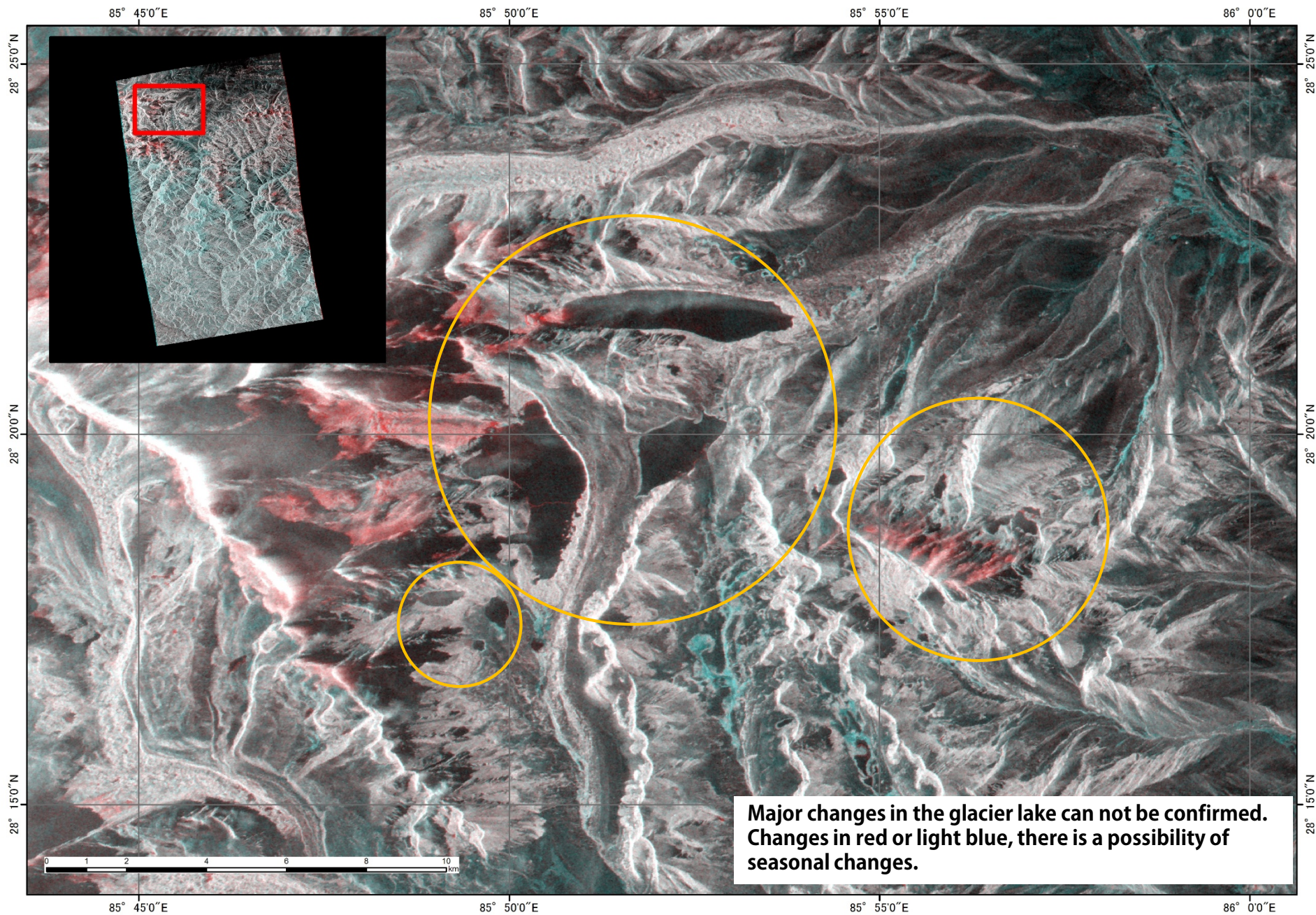


R:G:B = 2016/01/24 : 2016/07/09 : 2016/07/09



Major changes in the glacier lake can not be confirmed. Changes in red or light blue, there is a possibility of seasonal changes.

R:G:B = 2016/01/24 : 2016/07/09 : 2016/07/09



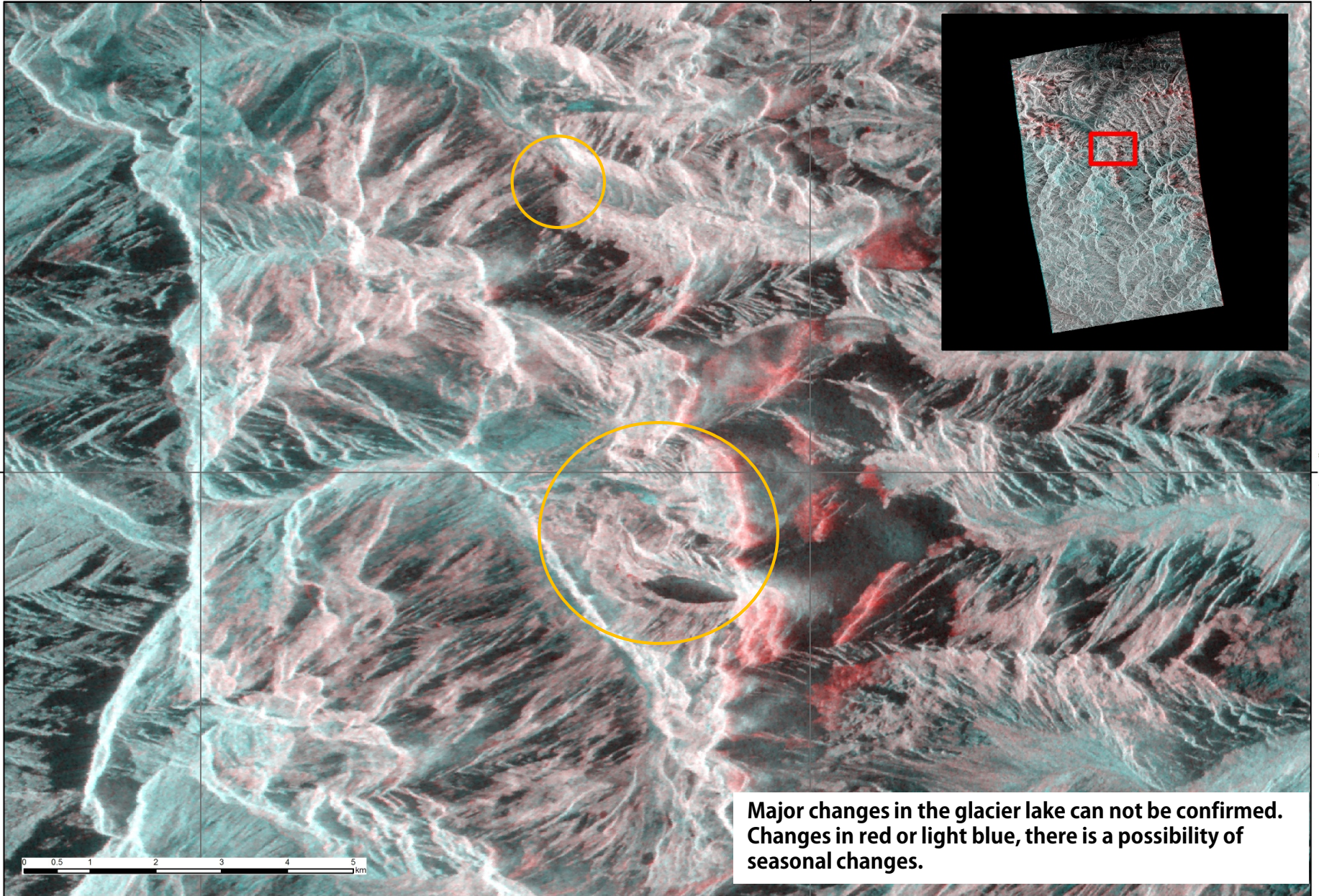
R:G:B = 2016/01/24 : 2016/07/09 : 2016/07/09

86° 00"E

86° 50"E

28° 50"N

28° 50"N



Major changes in the glacier lake can not be confirmed. Changes in red or light blue, there is a possibility of seasonal changes.

86° 00"E

86° 50"E

R:G:B = 2016/01/24 : 2016/07/09 : 2016/07/09

