

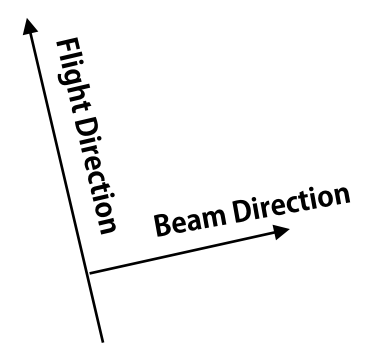
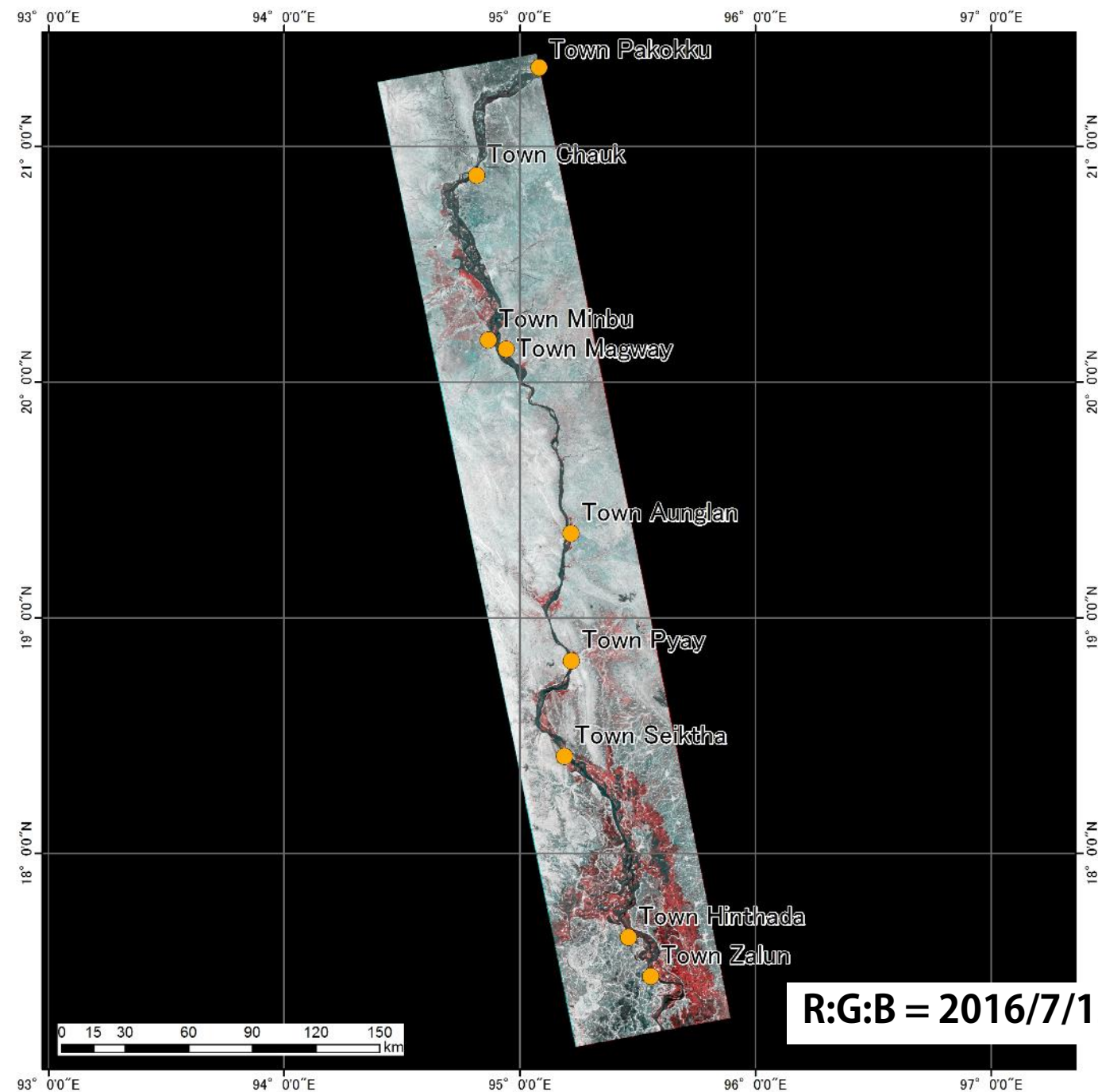


# **Initial Analysis results of Flood in Myanmar using ALOS-2/PALSAR-2**

**Japan Aerospace Exploration Agency (JAXA)  
Remote Sensing Technology Center of Japan  
(RESTEC)**

# Utilized Data

	Obs.Date	Mode	Satellite/Sensor	Pol.	Flight Direction	Off-nadir angle	Beam Direction
Pre-disaster	2016/7/12	SM3	ALOS-2/ PALSAR-2	HH+ HV	Ascending	28.2°	Right
Post-disaster	2016/8/9	SM3	ALOS-2/ PALSAR-2	HH+ HV	Ascending	28.2°	Right

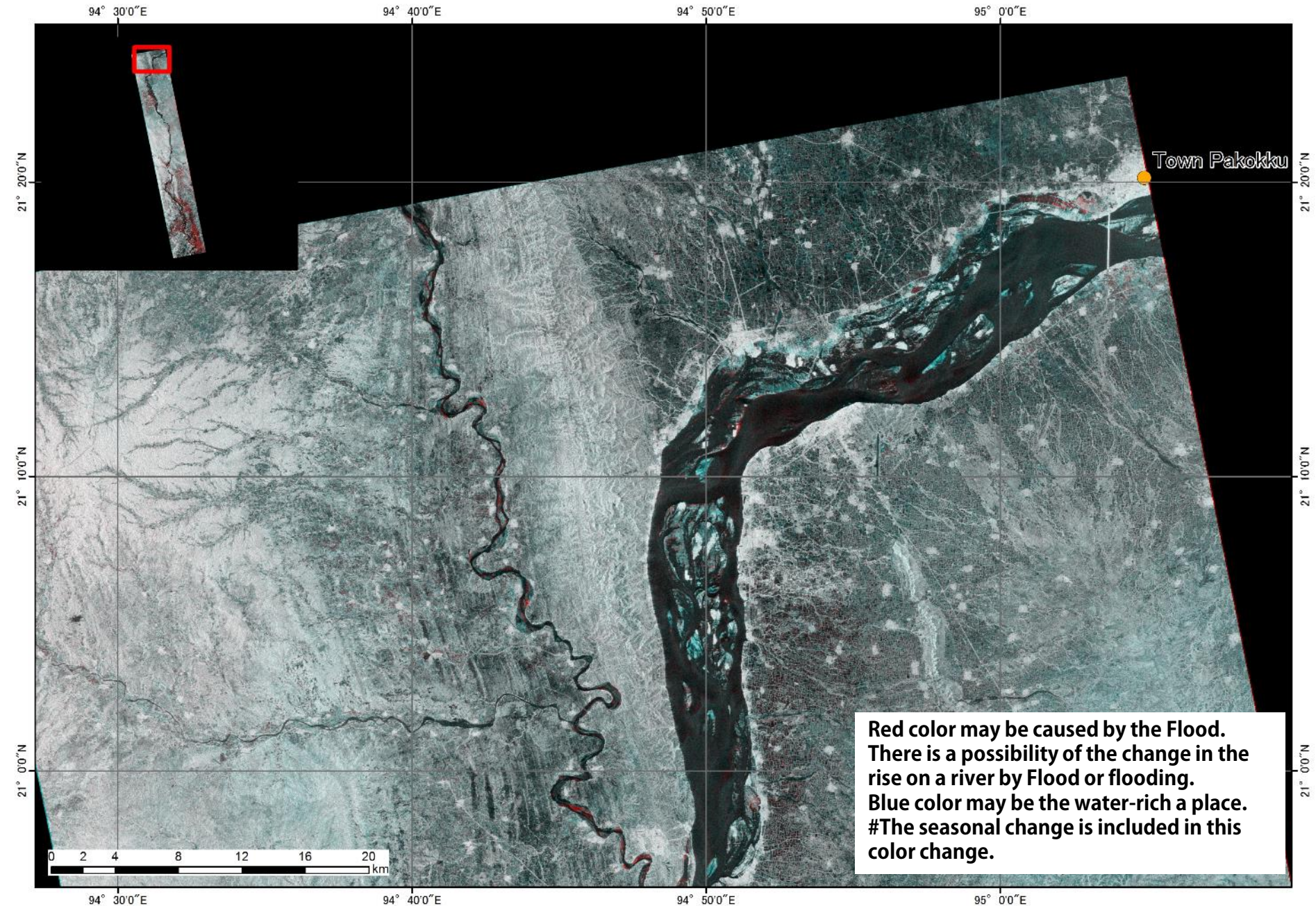


A blue part is the point that became bright in 2nd acquisition. A red part is the point where it became dark. Red color may be caused by the Flood. #The seasonal change is included in this color change.

R:G:B = 2016/7/12 :2016/8/9: 2016/8/9

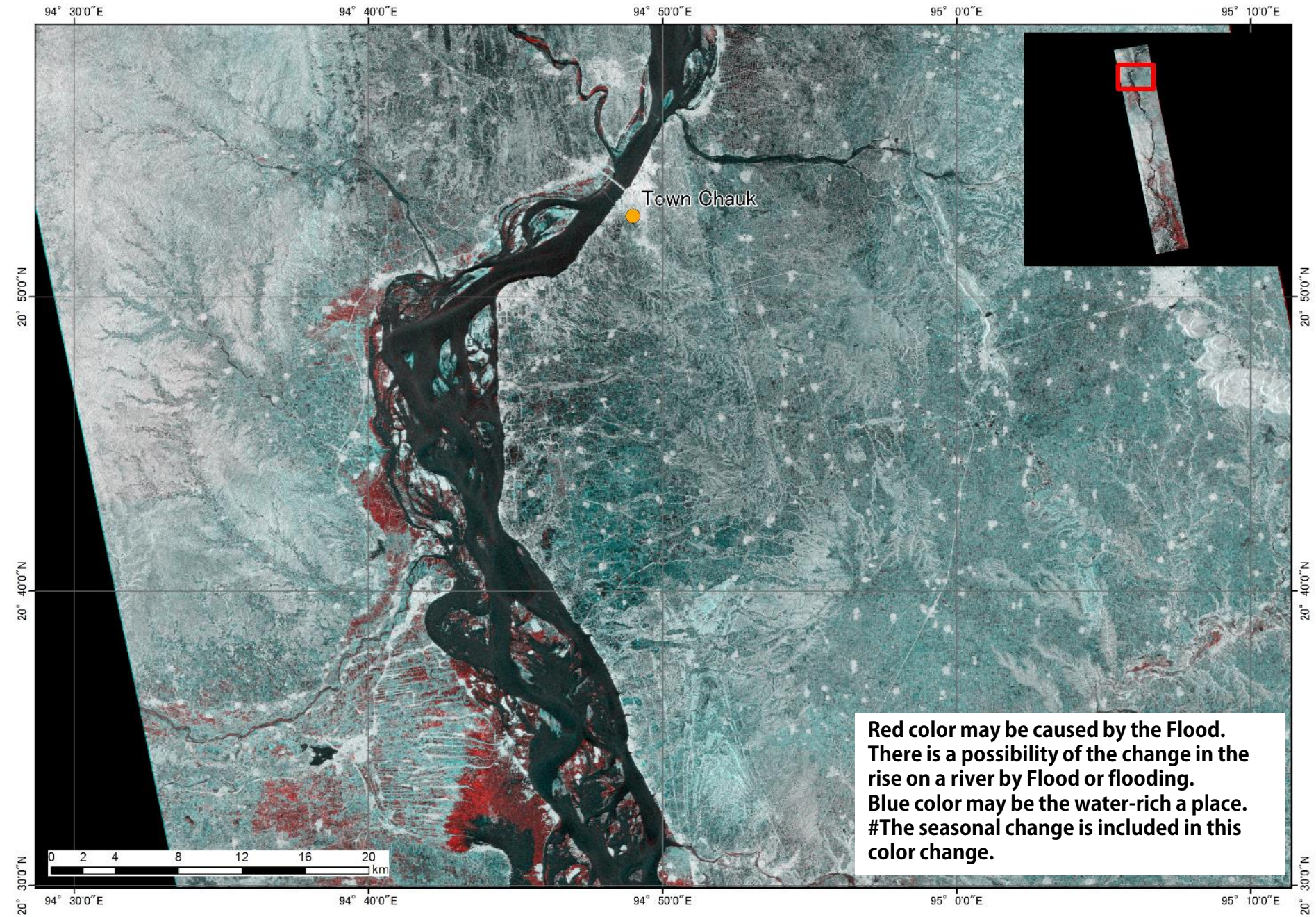


**R:G:B = 2016/7/12 : 2016/8/9: 2016/8/9**



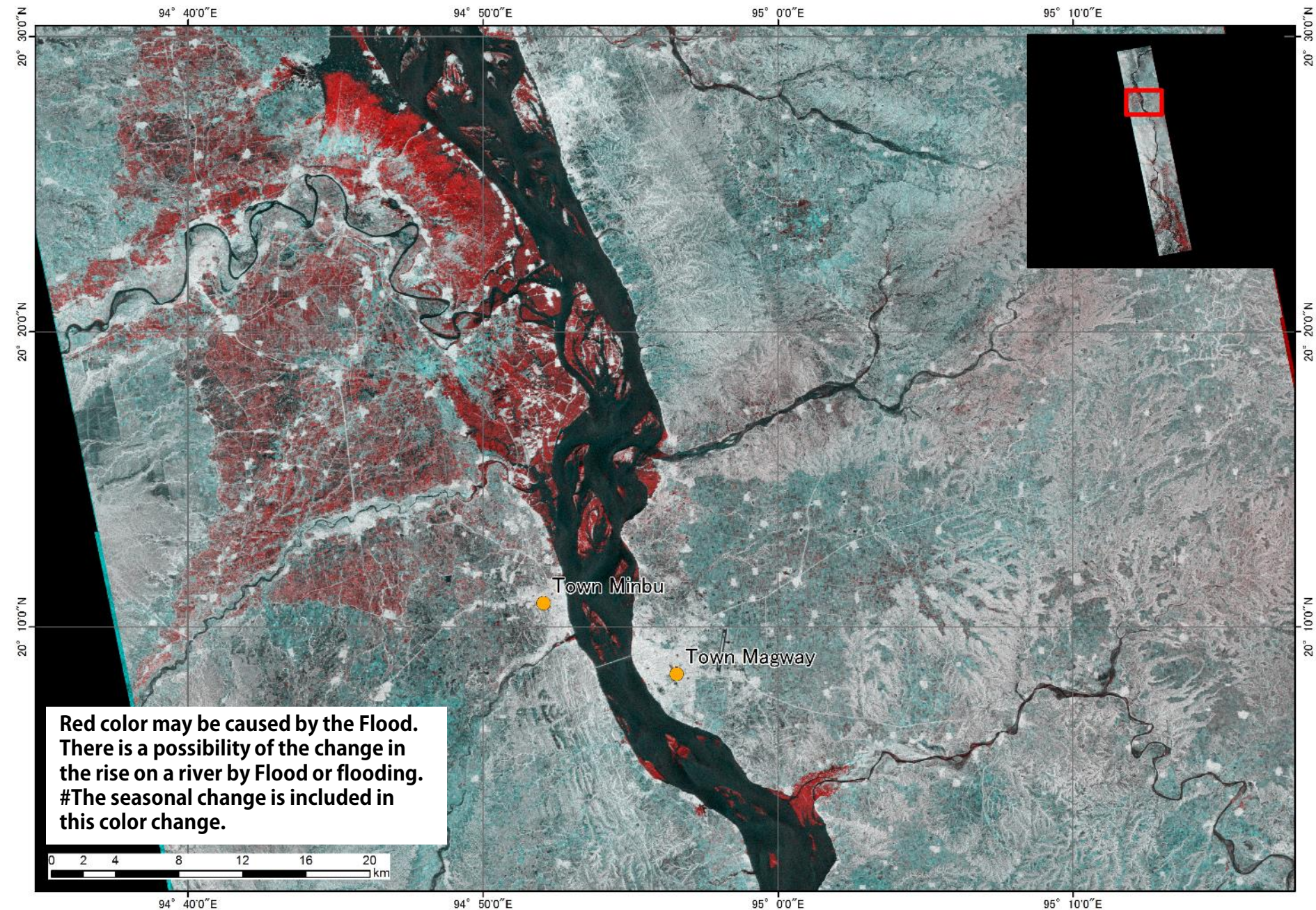


**R:G:B = 2016/7/12 : 2016/8/9: 2016/8/9**



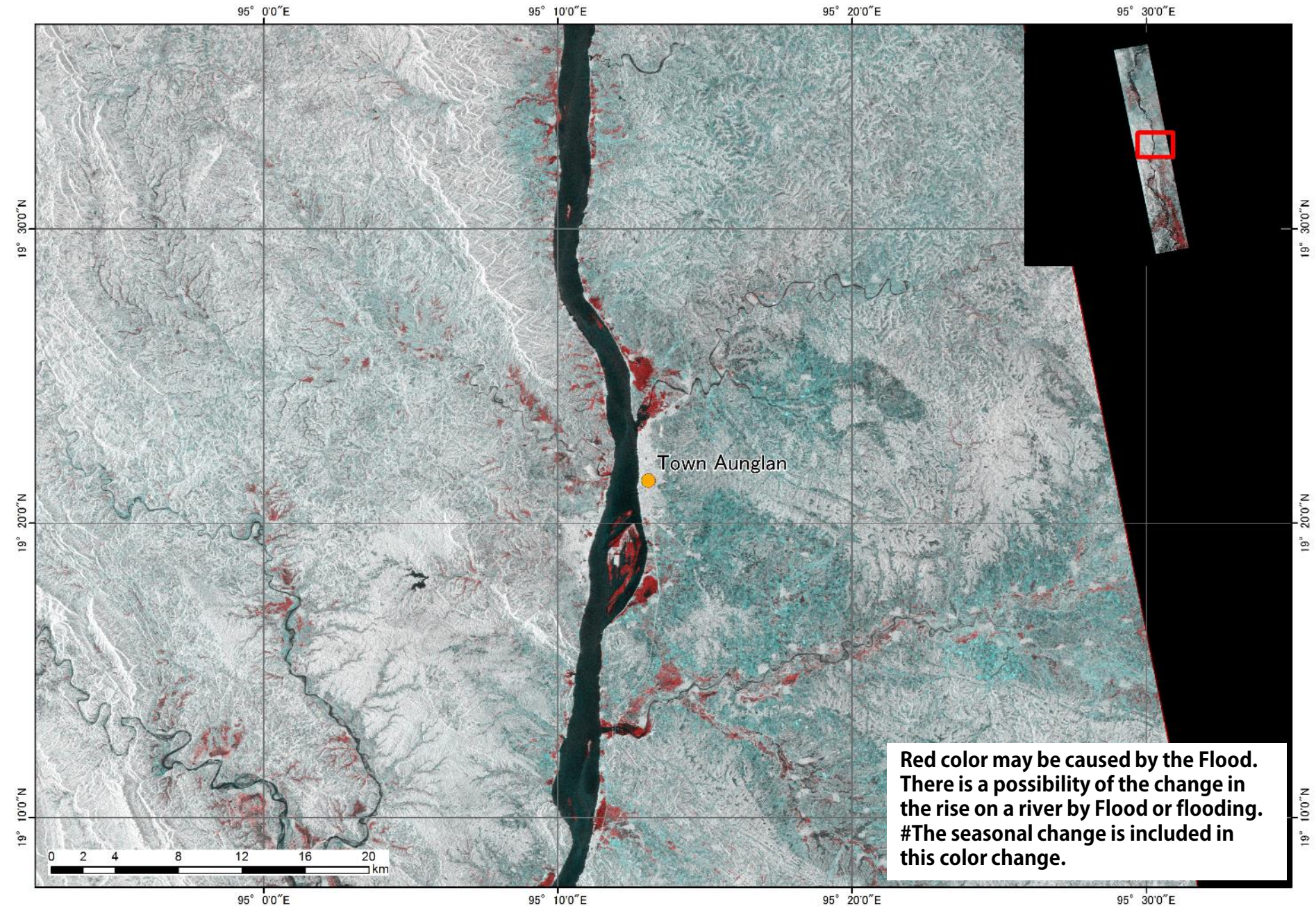


**R:G:B = 2016/7/12 : 2016/8/9: 2016/8/9**



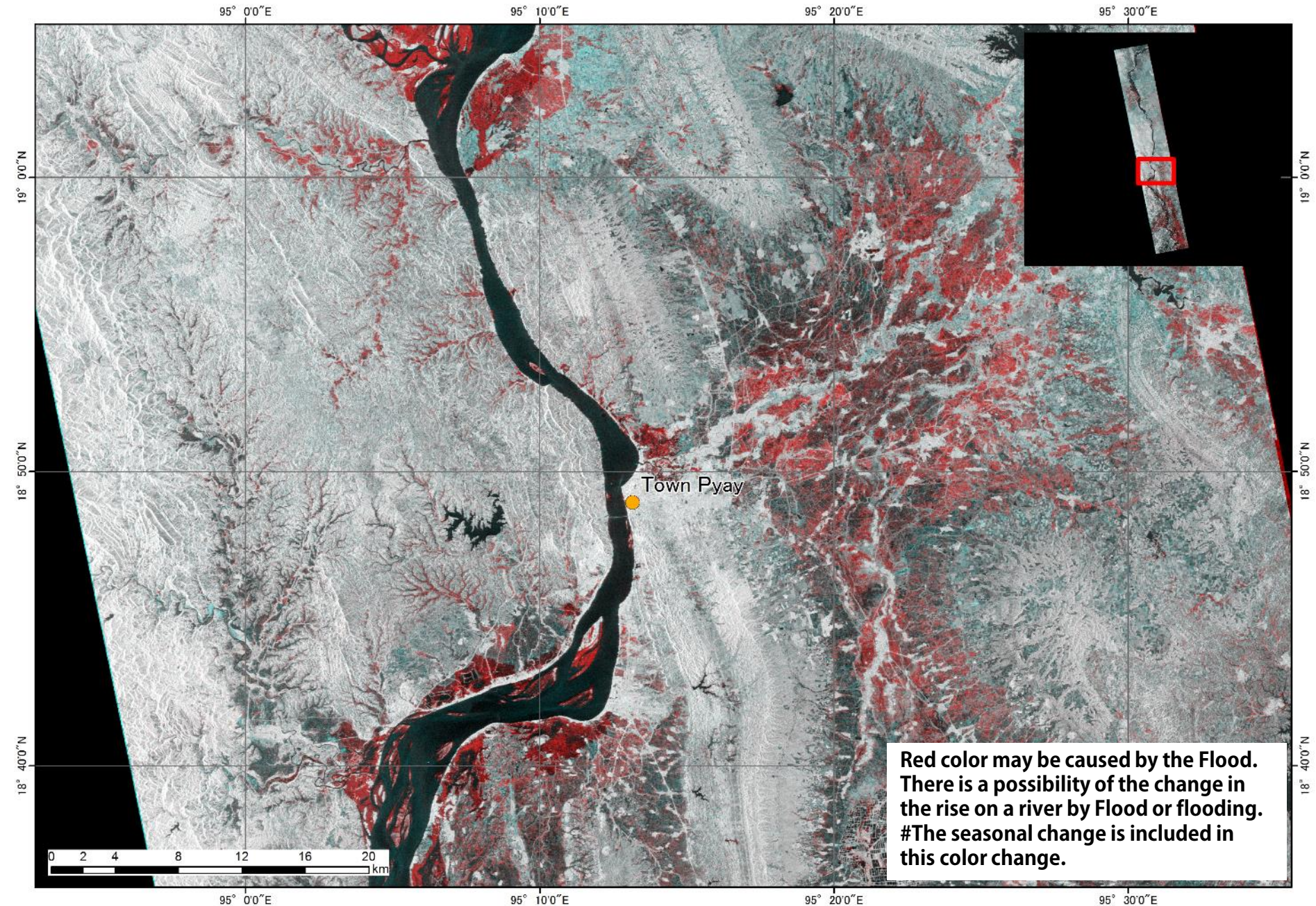


**R:G:B = 2016/7/12 : 2016/8/9: 2016/8/9**



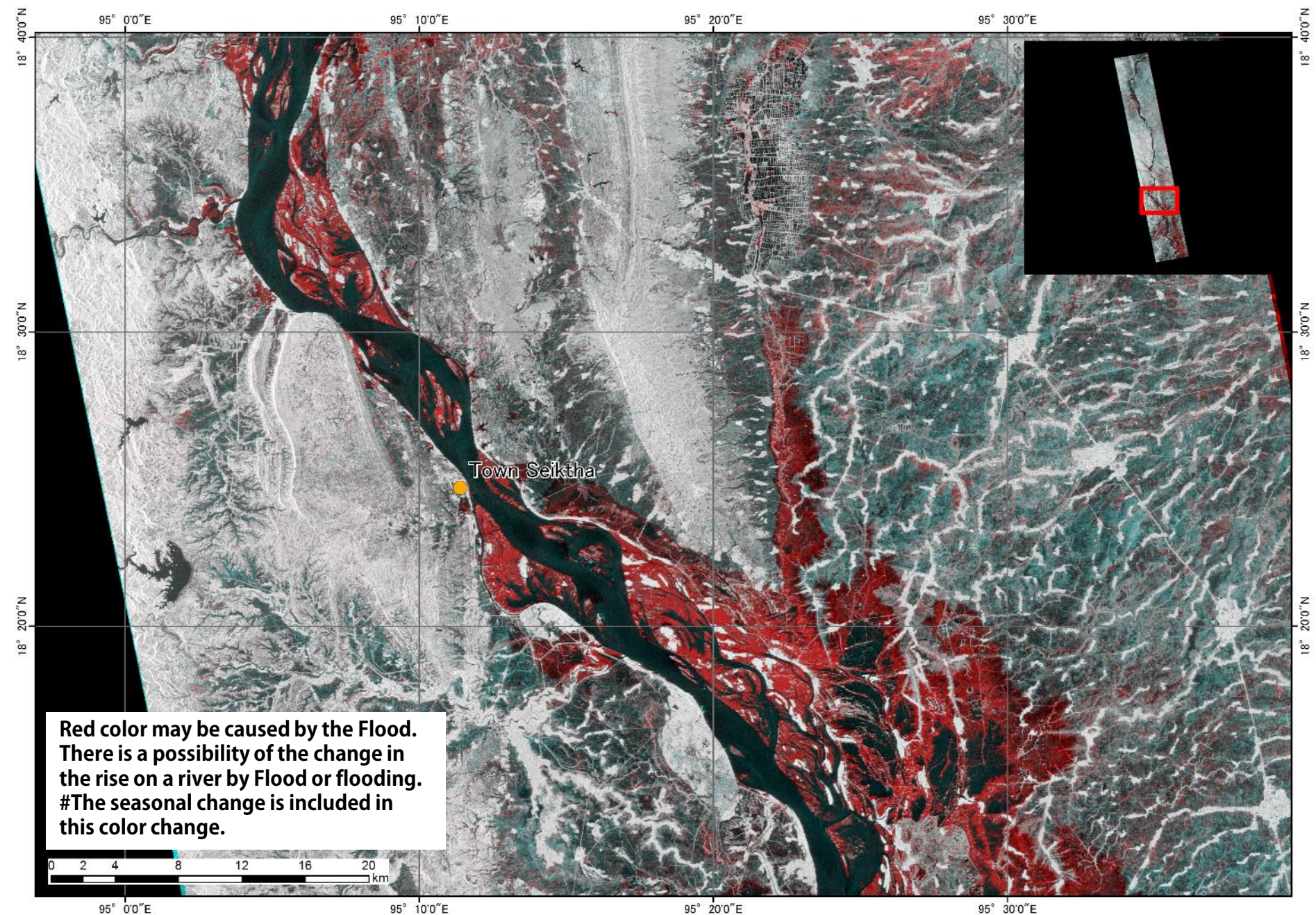


**R:G:B = 2016/7/12 : 2016/8/9: 2016/8/9**





**R:G:B = 2016/7/12 : 2016/8/9: 2016/8/9**





**R:G:B = 2016/7/12 : 2016/8/9: 2016/8/9**

