

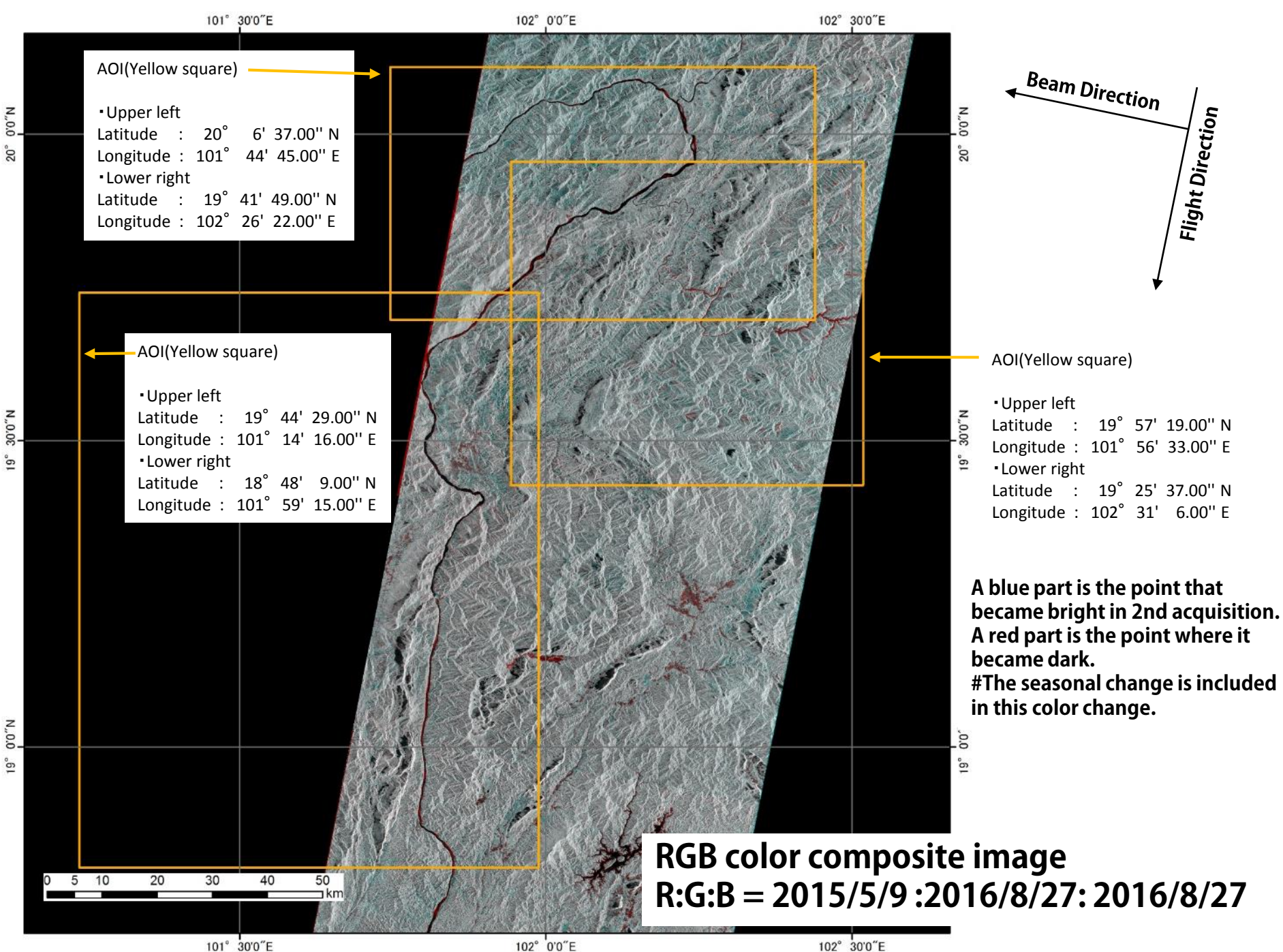


Initial Analysis results of Flash flood in Laos using ALOS-2/PALSAR-2

**Japan Aerospace Exploration Agency (JAXA)
Remote Sensing Technology Center of Japan
(RESTEC)**

Utilized Data

	Obs.Date	Mode	Satellite/Sensor	Pol.	Flight Direction	Off-nadir angle	Beam Direction
Pre-disaster	2015/5/9	SM3	ALOS-2/ PALSAR-2	HH+ HV	Descending	32.5°	Right
Post-disaster	2016/8/27	SM3	ALOS-2/ PALSAR-2	HH+ HV	Descending	32.5°	Right



R:G:B = 2015/5/9 :2016/8/27: 2016/8/27

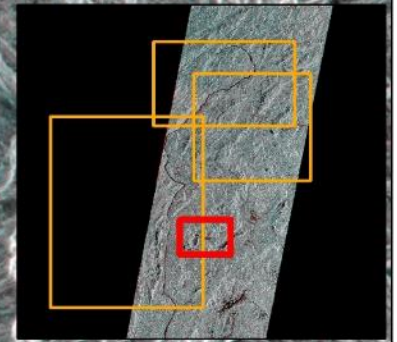
**Latitude : 19° 8'50.00"N
Longitude : 101° 59' 5.00"E**

101° 55'0"E

102° 0'0"E

102° 5'0"E

**Red color may be caused by the Flash flood .
#The seasonal change is included in this color change.**

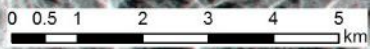


19° 10'0"N

19° 10'0"N

19° 5'0"N

19° 5'0"N



101° 55'0"E

102° 0'0"E

102° 5'0"E

R:G:B = 2015/5/9 :2016/8/27: 2016/8/27

Latitude : 19° 41' 9.30"N
Longitude : 102° 19' 45.00"E

