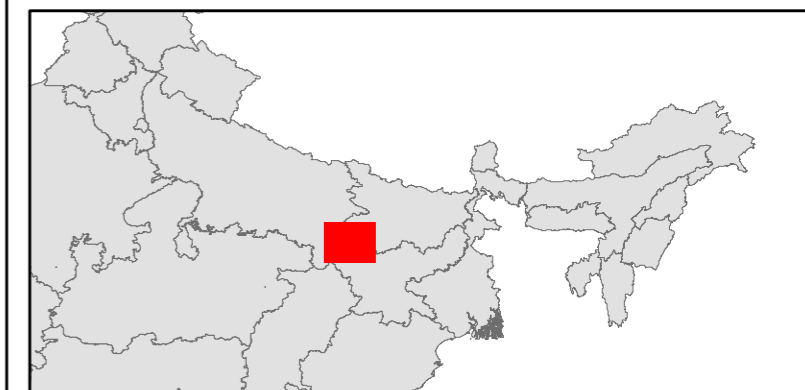
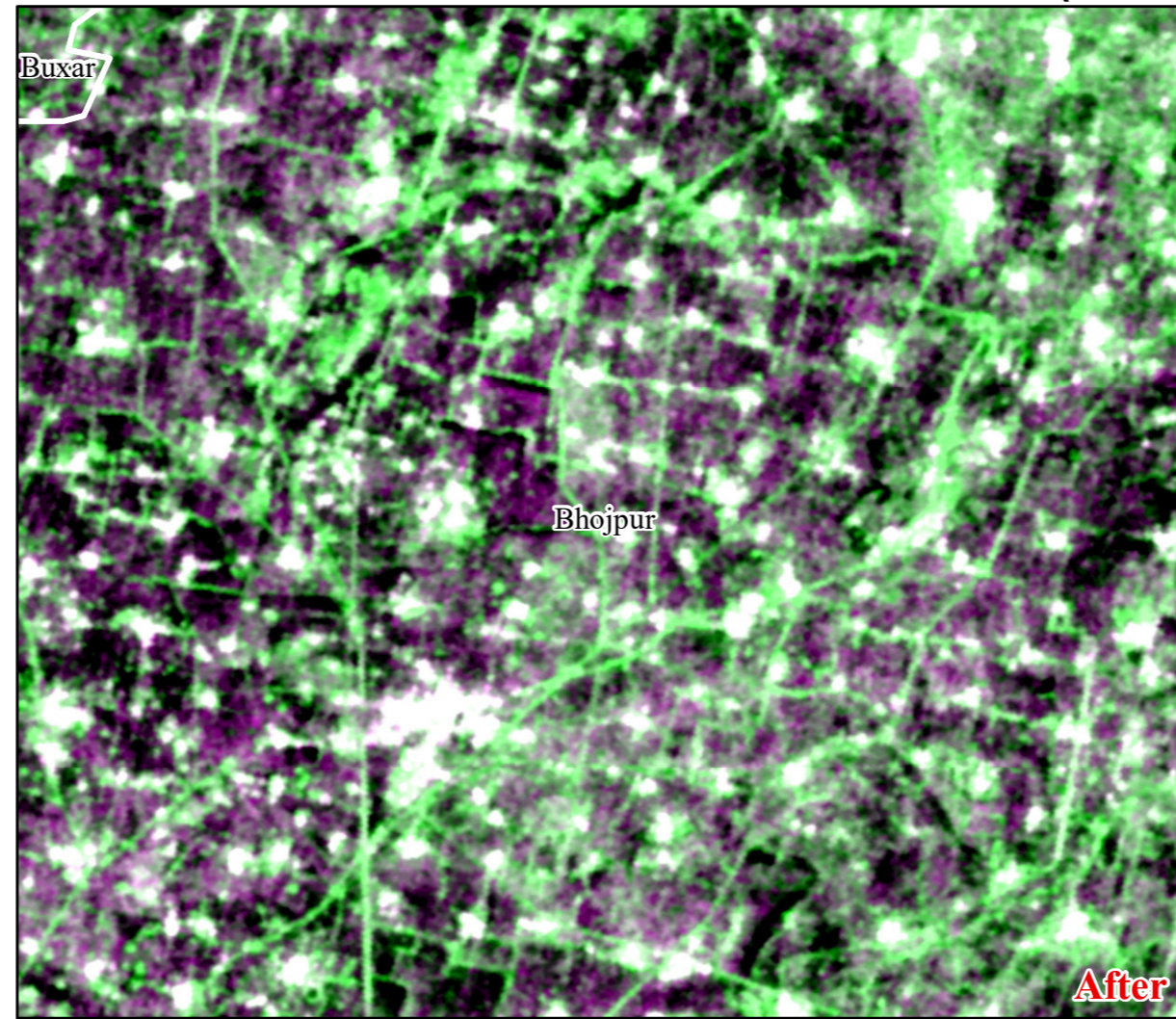
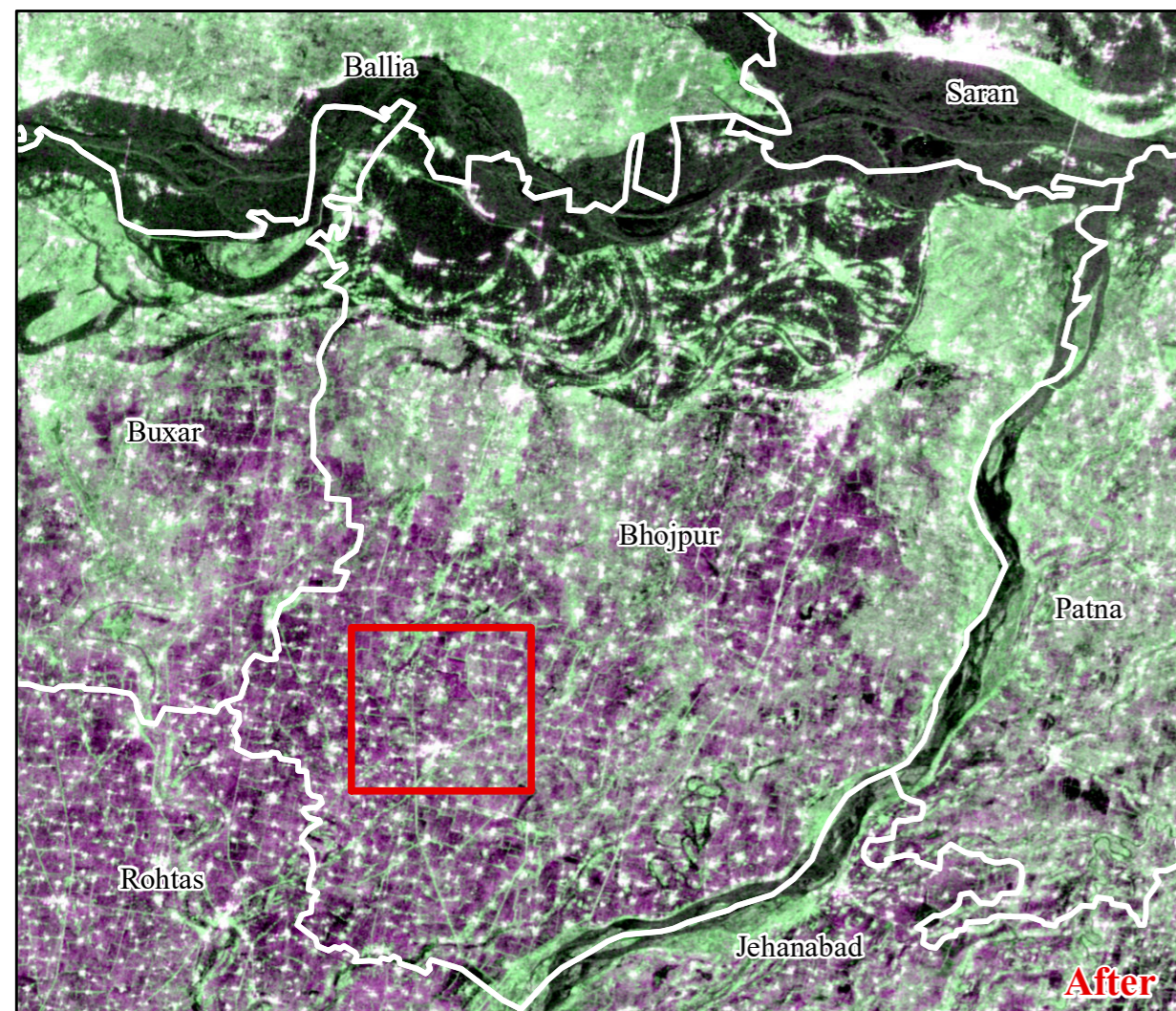
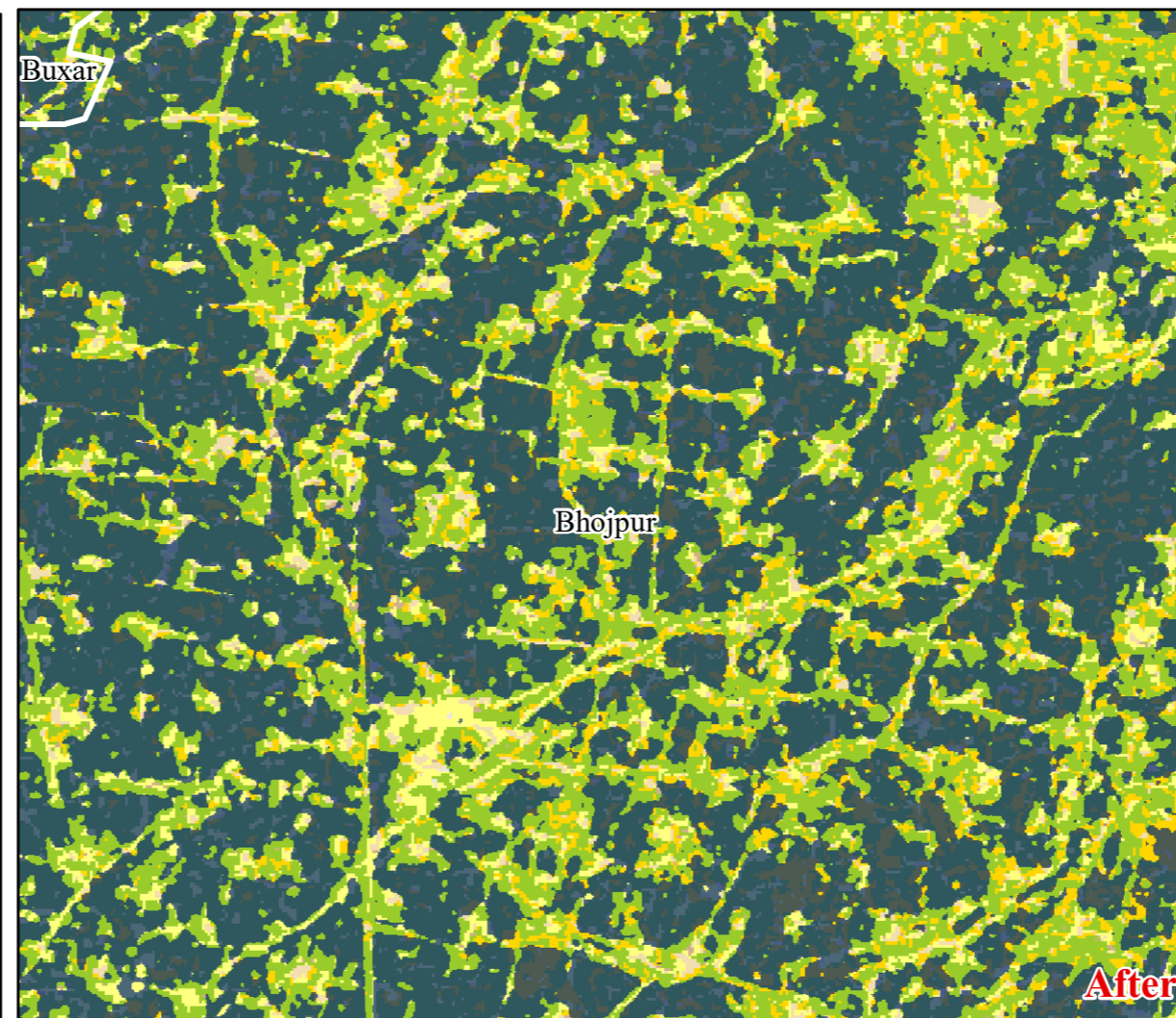
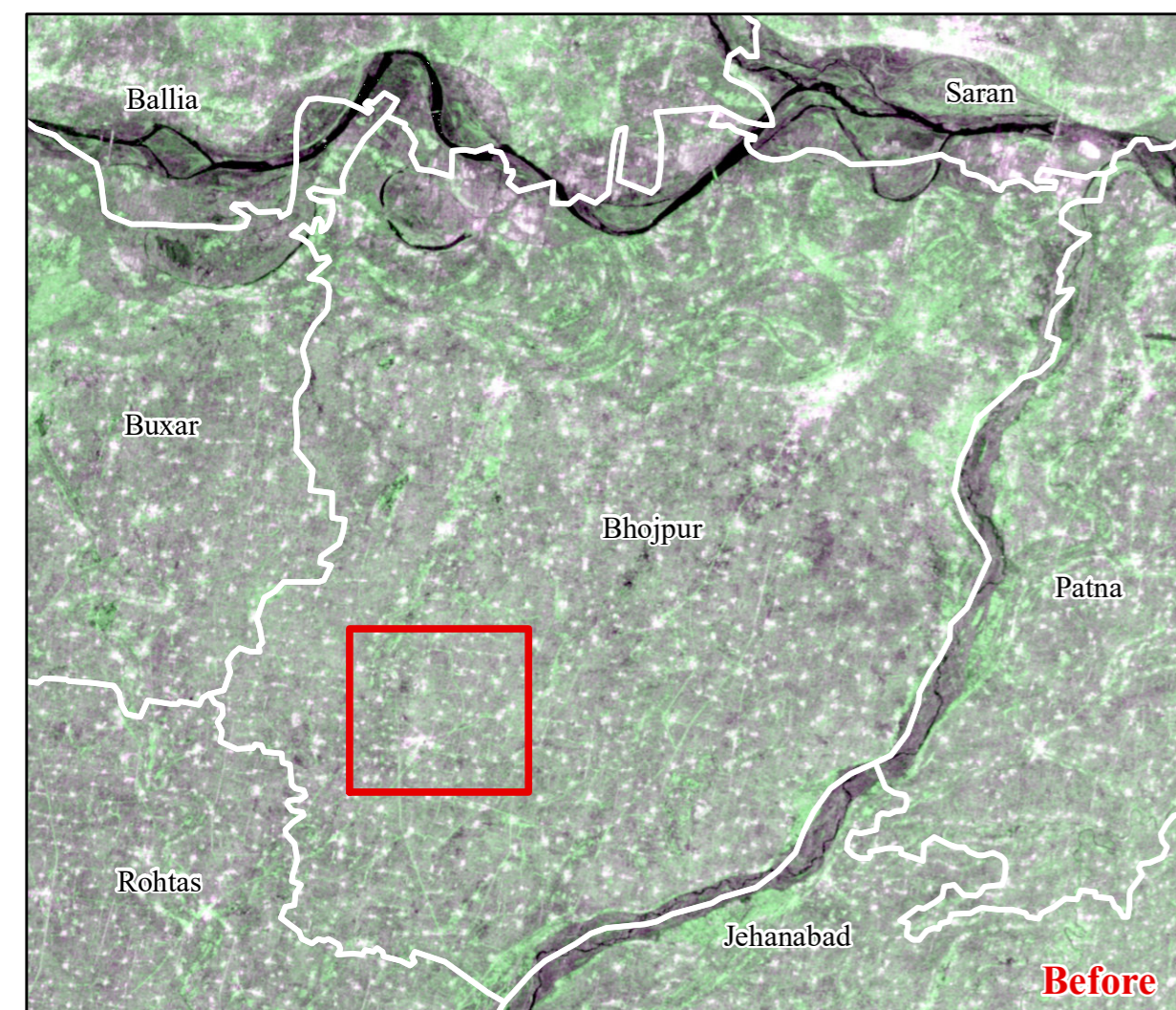


MAPPING CROPLAND IMPACT FROM FLOODING IN BIHAR USING JAXA ALOS-2 PALSAR-2 IMAGES (26 AUGUST 2016)



Today's satellite observation 26th August 2016 (UTC 06:21) from Japan Aerospace Exploration Agency (JAXA) shows clearly large-scale flooding in Bihar and Uttar Pradesh affected more than 5 million people. The satellite images clearly show cropland inundated by floods. The worst affected districts are Patna, Bhagalpur, Vaishali, Buxar, Bhojpur, Sonapur, Saran, Begusarai, Samastipur, Lakhisarai, Khagaria, Munger, Nalanda and Katihar. The closer view of district level flood images for Bhojpur explains how the farmers would have lost the valuable crops and the income losses from this year's worst flooding in Bihar.



Legend

- Disaster Image :ALOS-2 PALSAR-2
- Date :15 Jan. 2016 (Before)
- :26 Aug. 2016 (After)
- Land-cover :National Remote Sensing Centre
- Flood
- District Boundary
- Road
- Cities/Town

Data Provided by:



Data Provided by:



RESEARCH PROGRAM ON
Climate Change,
Agriculture and
Food Security

