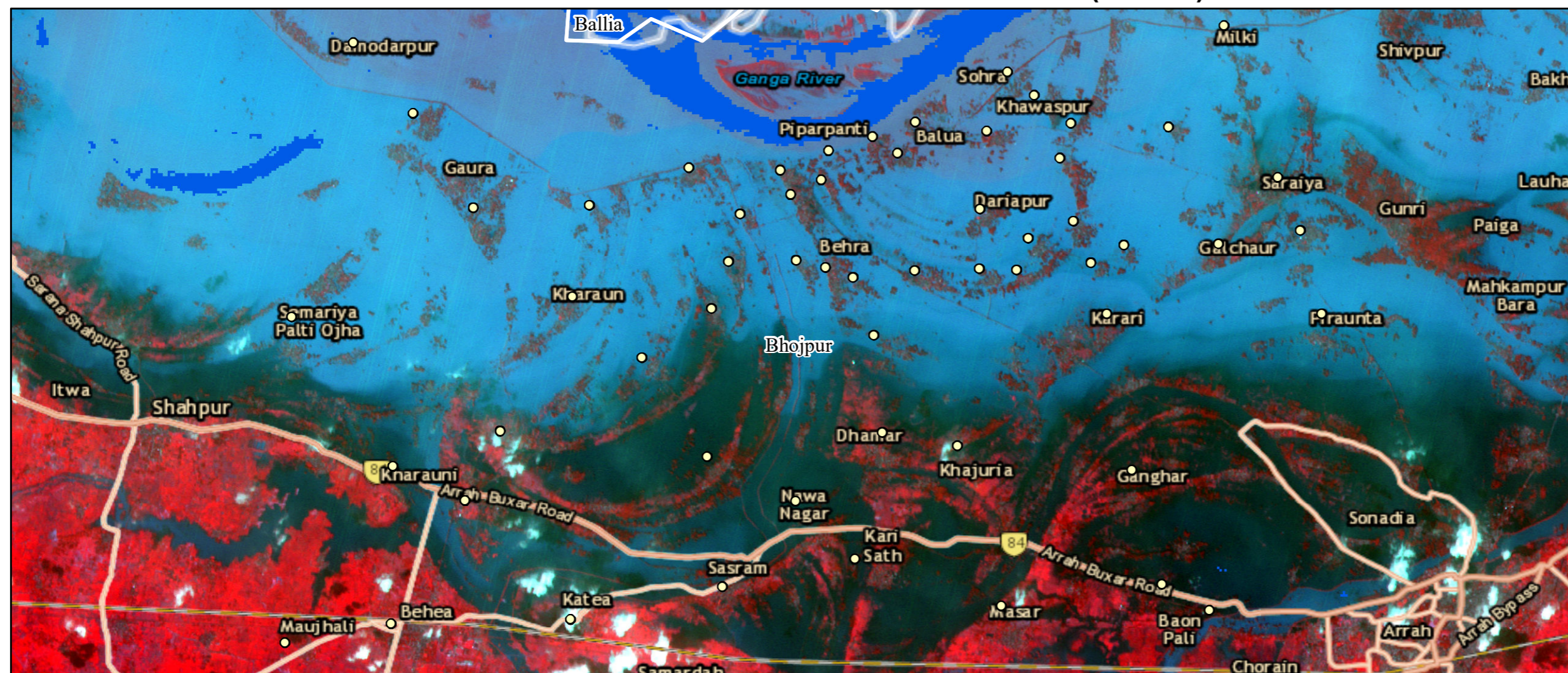
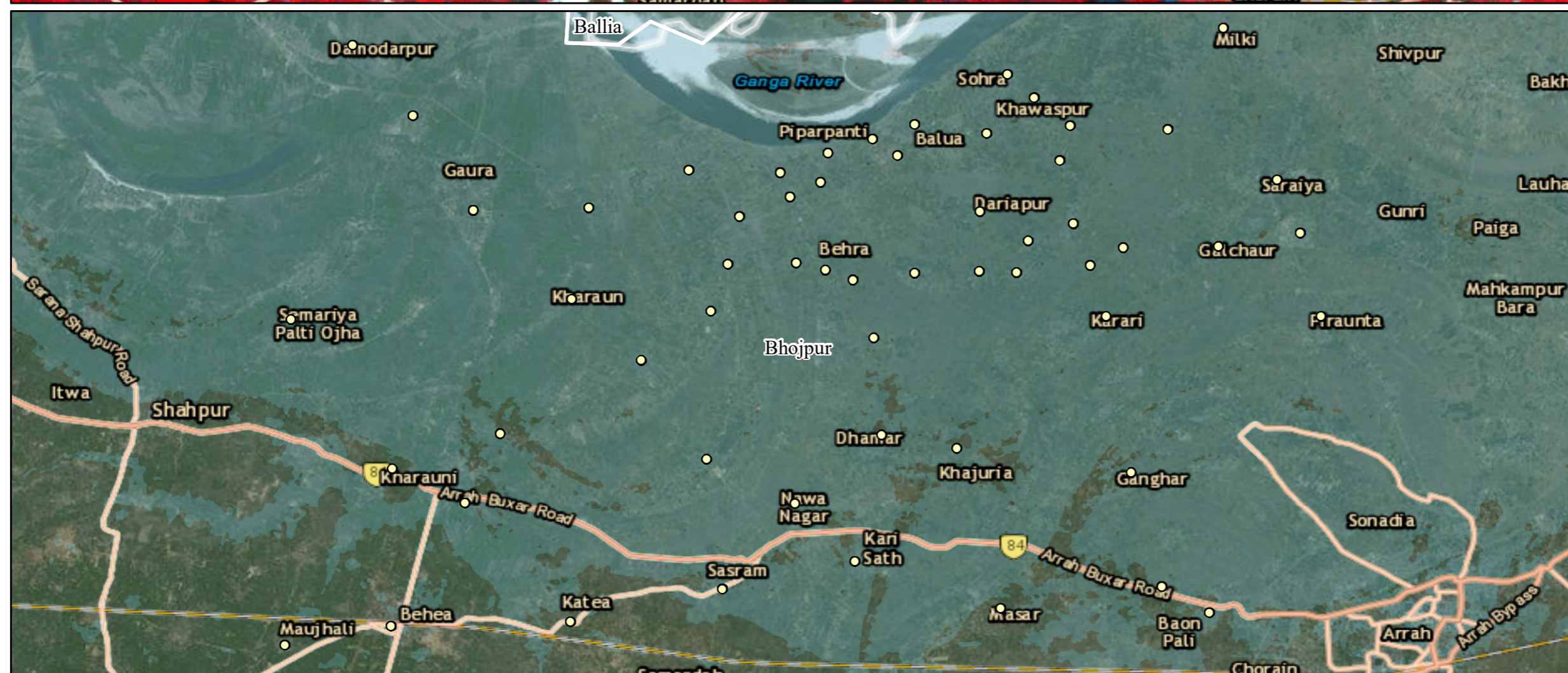


# MAPPING CROPLAND IMPACT FROM FLOODING IN BHOJPUR DISTRICT (BIHAR) USING THEOS1 SATELLITE IMAGE (28 AUGUST 2016)



THEOS satellite image from 28 August 2016 (IST 04:51 pm) shows large-scale flooding in Bihar. Severely affected districts include Bhojpur, Nalanda, Patna, Saran, Samastipur and Vaishali.

The closer view of swollen Ganges along Bhojpur clearly shows large scale crop damages from persisting water levels for the past one week. Large floodplains with standing crops are completely submerged by the recent floods. The estimated cropland damage for these districts is 65,000 ha. Submergence of roads and several villages like Behra, Balua, Gaichaur, Gaura, Milki, etc. can be clearly noticed in the flood image.



**Legend**

Disaster Image : THEOS1 SCENE level 2A  
Date : 28 Aug. 2016

Flood       River

District Boundary

Data Provided by:




Data Provided by:



