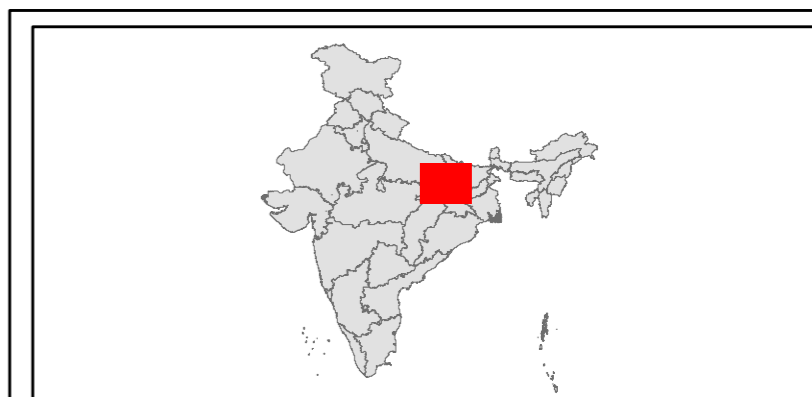
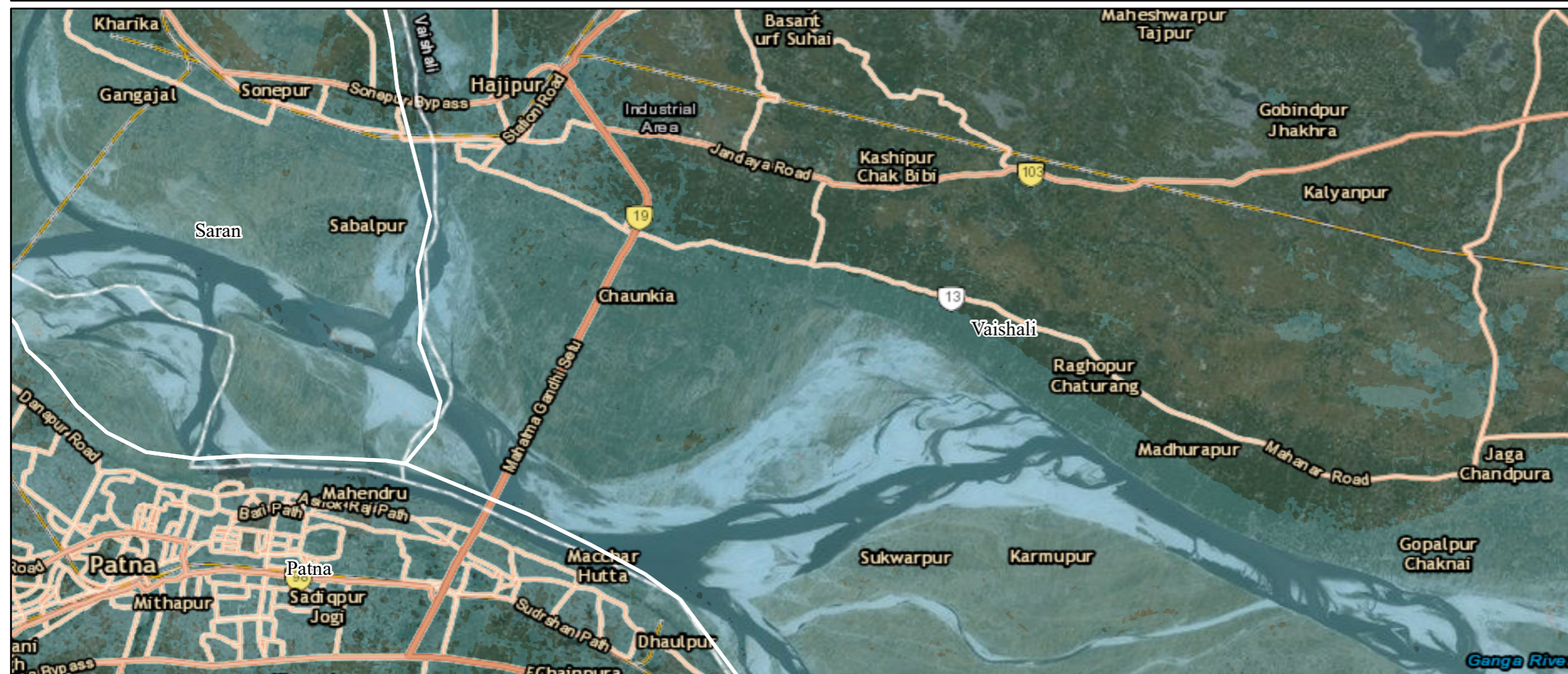


MAPPING CROPLAND IMPACT FROM FLOODING IN SARAN & VAISHALI (BIHAR) USING THEOS1 SATELLITE IMAGES (28 AUGUST 2016)





THEOS satellite image from 28 August 2016 (IST 04:51 pm) shows large-scale flooding in Bihar. Severely affected districts include Bhojpur, Nalanda, Patna, Saran, Samastipur and Vaishali.

This section of image shows extent of inundated land area in Saran and Vaishali districts. The estimated cropland damage for both the districts covered by the image are 120,000 ha. Severity of the flood damages is clearly seen in the extent of inundated area under Mahatma Gandhi Sethu (bridge), the prime highway connecting North and South Bihar surrounded extensive croplands.

Legend

Disaster Image : THEOS1 SCENE level 2A
 Date : 28 Aug. 2016

 Flood

 District Boundary

Data Provided by:

Data Provided by: