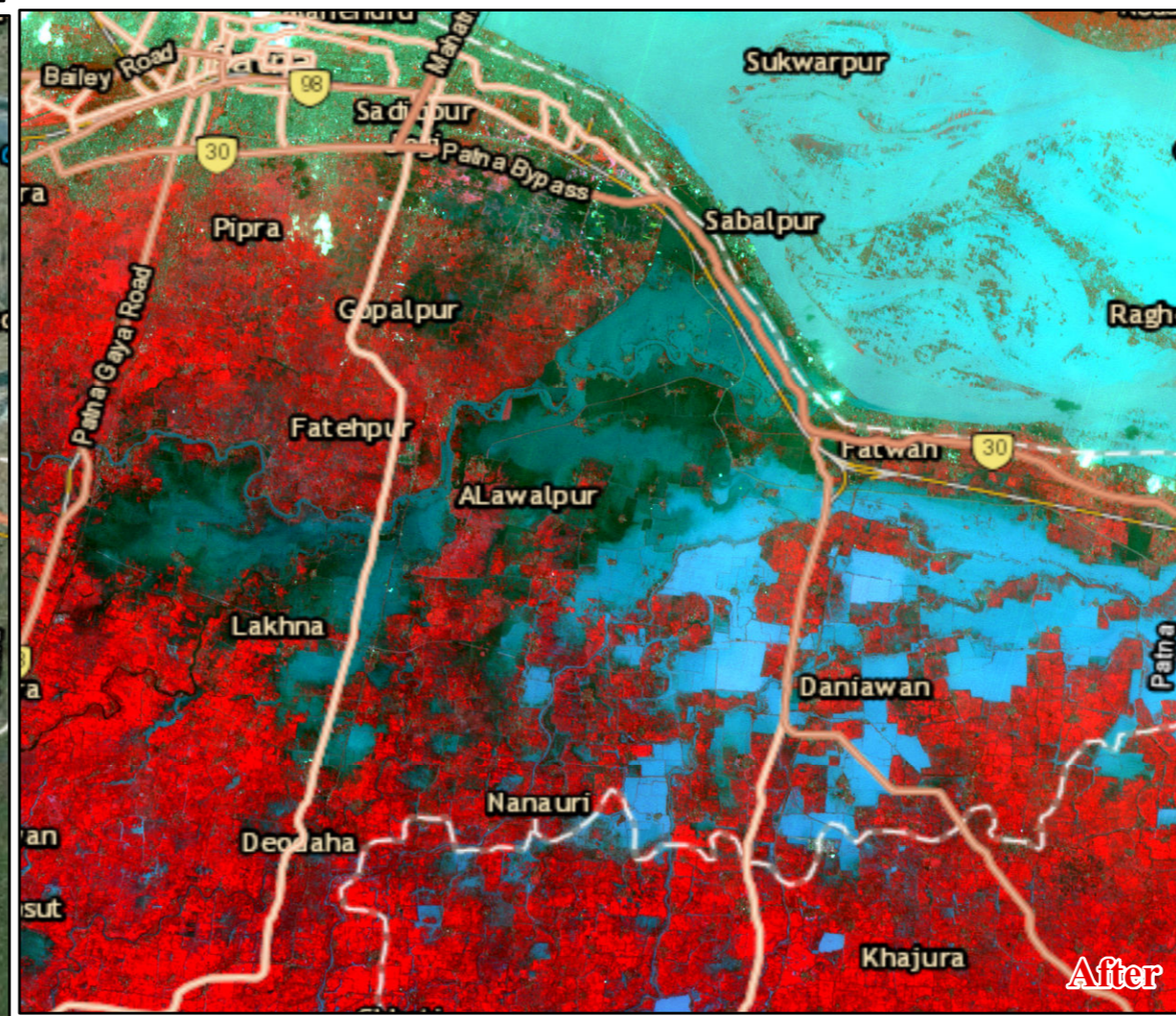
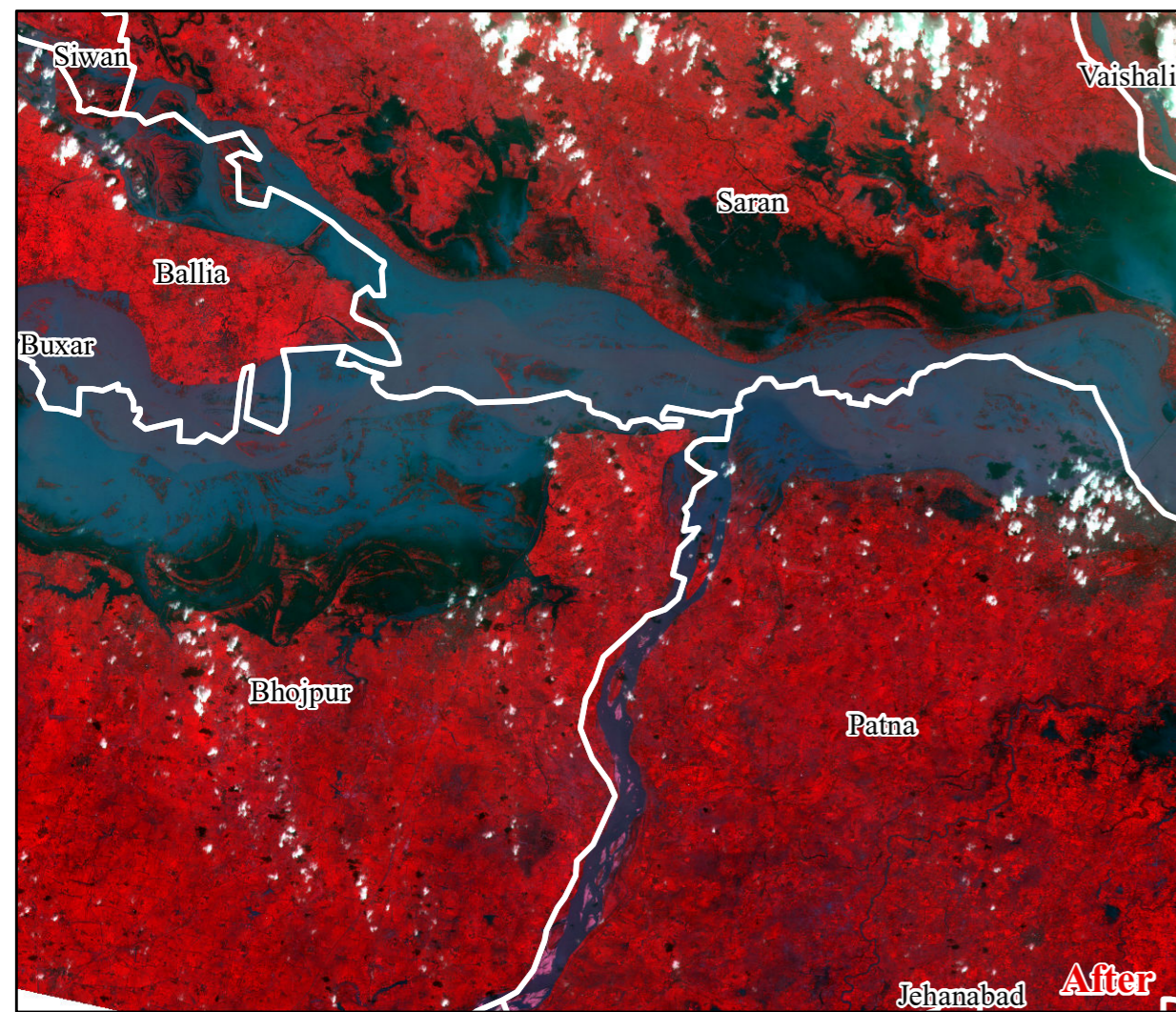


MAPPING CROPLAND IMPACT FROM FLOODING IN BIHAR USING THEOS1 SCENE LEVEL 2A IMAGES (28 AUGUST 2016)





THEOS satellite image from 28 August 2016 (IST 04:51 pm) shows large-scale flooding in Bihar. Severely affected districts include Bhojpur, Nalanda, Patna, Saran, Samastipur and Vaishali. Total of 285,000 ha area of croplands are under flood inundation and the largest inundated area are in Patna and Saran districts. Even with the recession in flood inundation in past few day, almost 2.2 million people are affected in those five districts.

The closer view of swollen Ganges along Bhojpur and Patna clearly shows large scale crop damages from persisting water levels for the past one week. Submergence of road and several villages can be clearly noticed in the flood image.

Legend

Disaster Image :THEOS1 SCENE level 2A
Date :28 Aug. 2016

 Flood

 District Boundary

Data Provided by:

Data Provided by: