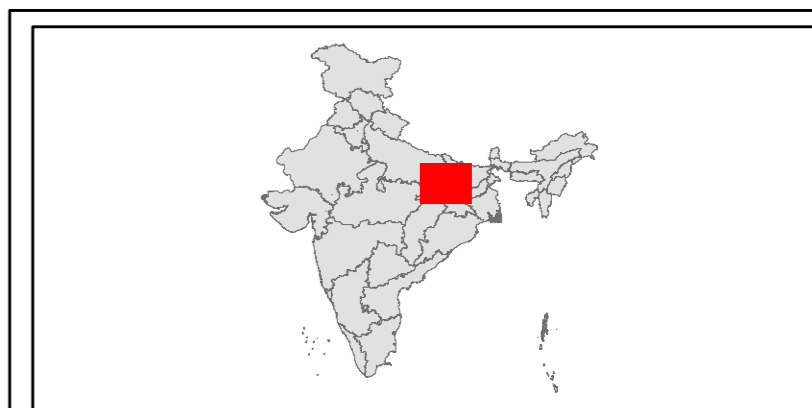
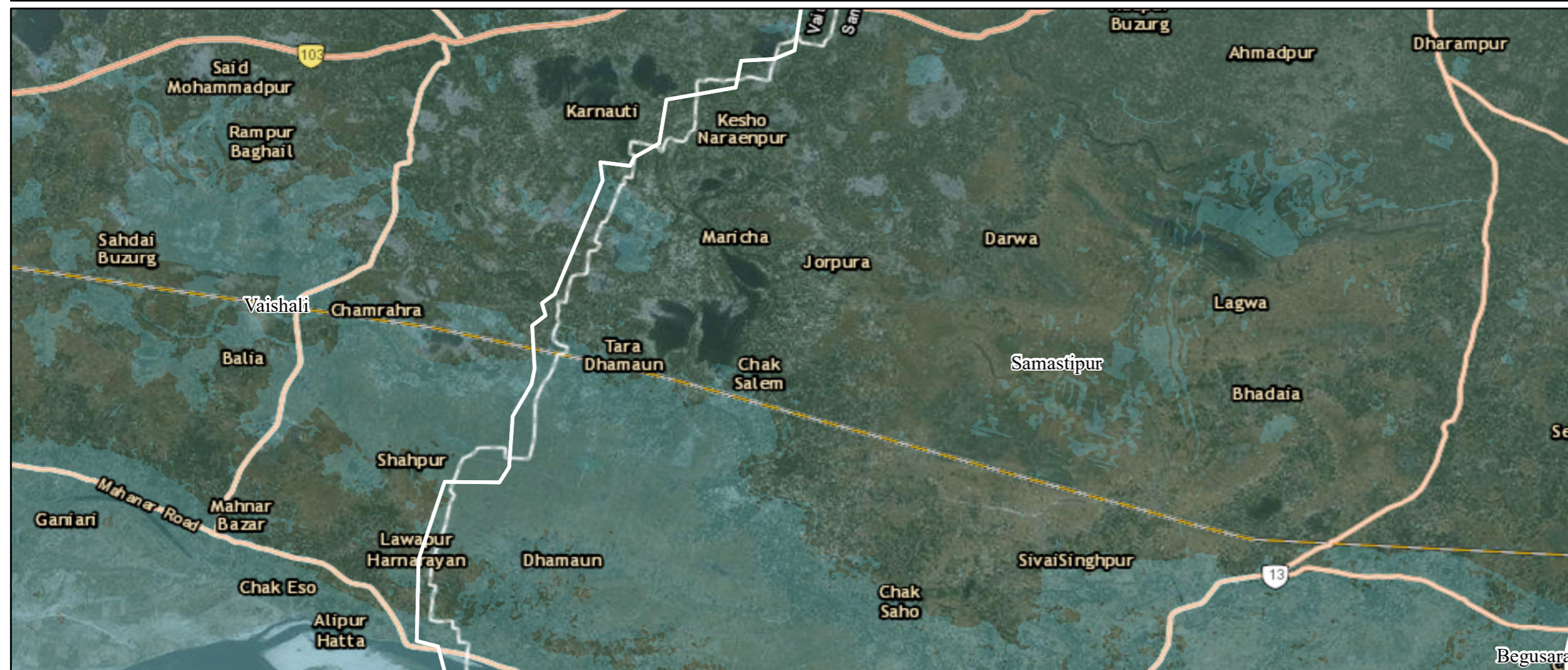
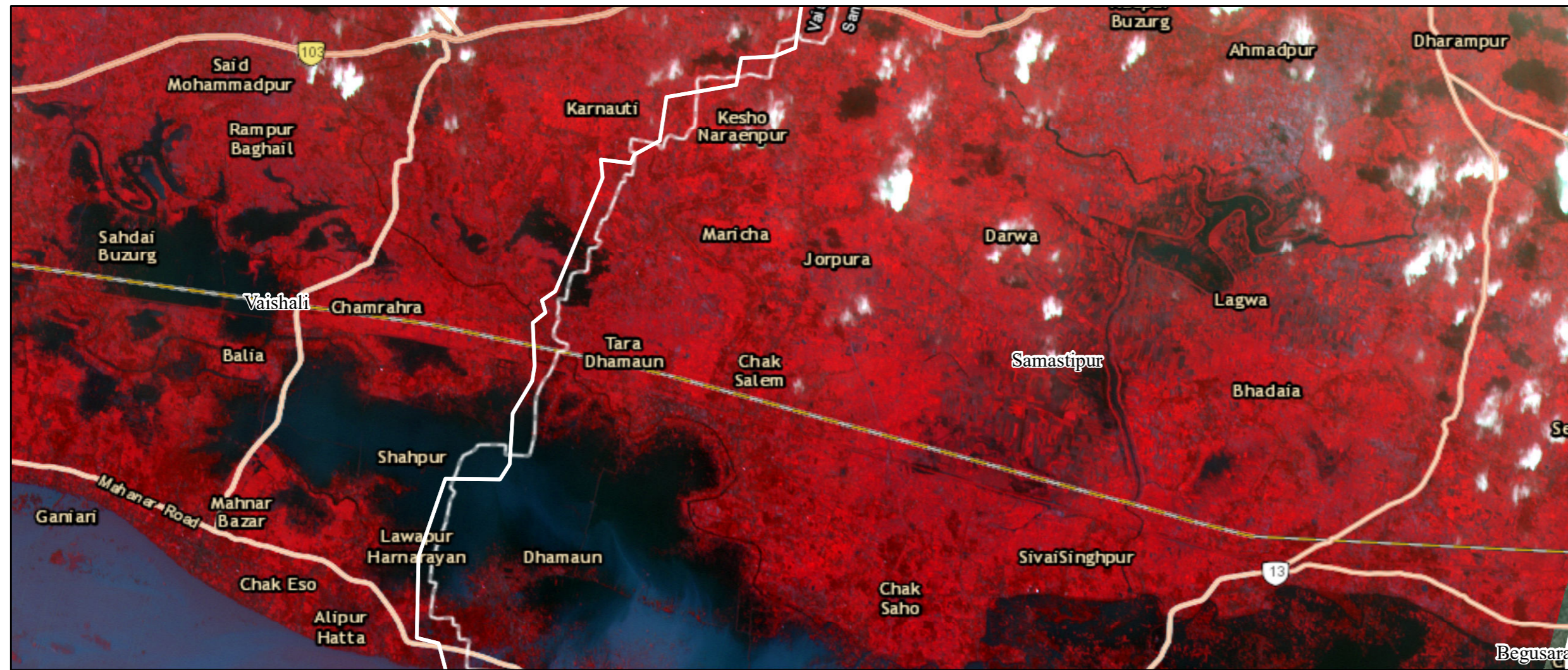


MAPPING CROPLAND DAMAGES FROM FLOODING IN SAMASTIPUR & VAISHALI (BIHAR) USING THEOS1 SATELLITE IMAGE (28 AUGUST 2016)





THEOS satellite image from 28 August 2016 (IST 04:51 pm) shows large-scale flooding in Bihar. Severely affected districts include Bhojpur, Nalanda, Patna, Saran, Samastipur and Vaishali.

The estimated cropland damage for both the districts covered by the image are 70,000 ha. The closer view of swollen Ganges along Vaishali and Samastipur clearly shows large scale crop damages from persisting water levels for the past one week. Submergence of road and several villages can be clearly noticed in the flood image.

Legend

Disaster Image : THEOS1 SCENE level 2A
 Date : 28 Aug. 2016

 Flood

 District Boundary

Data Provided by:

Data Provided by:

 International Water Management Institute

 RESEARCH PROGRAM ON Climate Change, Agriculture and Food Security

