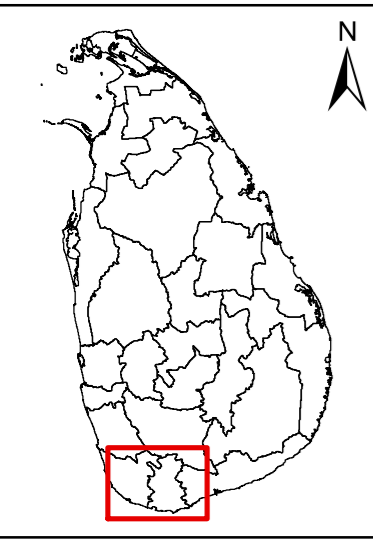


Satellite image from JAXA ALOS-2 PALSAR-2 observed on 30 May 2017 for Matara district, Southern Province



Due to heavy rains in past few days, landslides and floods in Sri Lanka killed 151 people, 111 people still missing, displacing 100,000 and directly affecting 500,000 people across many districts according to the initial estimates by state-run Disaster Management Center.

International Disaster Charter was activated by Disaster Management Centre (DMC) and coordinated by International Water Management Institute (IWMI)/CGIAR. The first satellite image obtained on 28-05-2017 by German Aerospace Centre (DLR) showed vast areas of standing flood waters along the Southern and South-Western Provinces. Initial estimates from satellite images indicate that Matara (49.3) and Kalutara with 31.6 sq.km flooded area, are the worst affected districts followed by Galle (20.2 sq.km), Rathnapura (14.9 sq.km), Colombo (5.6 sq.km) and Gampaha (4.5 sq.km). Detailed Divisional Secretariat wise flood affected area for these six districts are given in the attached excel file. Kalutara is reeling under worst flood since 2003.

The satellite image is a combination of two different dates taken by TerraSAR X-2 for 28th and 30th May 2017. Along the Kalutara river you will see black areas representing standing flood waters and the grey color explains areas were flood water receded as of today.

Legend

Satellite Image : ALOS-2 PALSAR-2
30 May 2017

- Cities/Town
- SL DSD

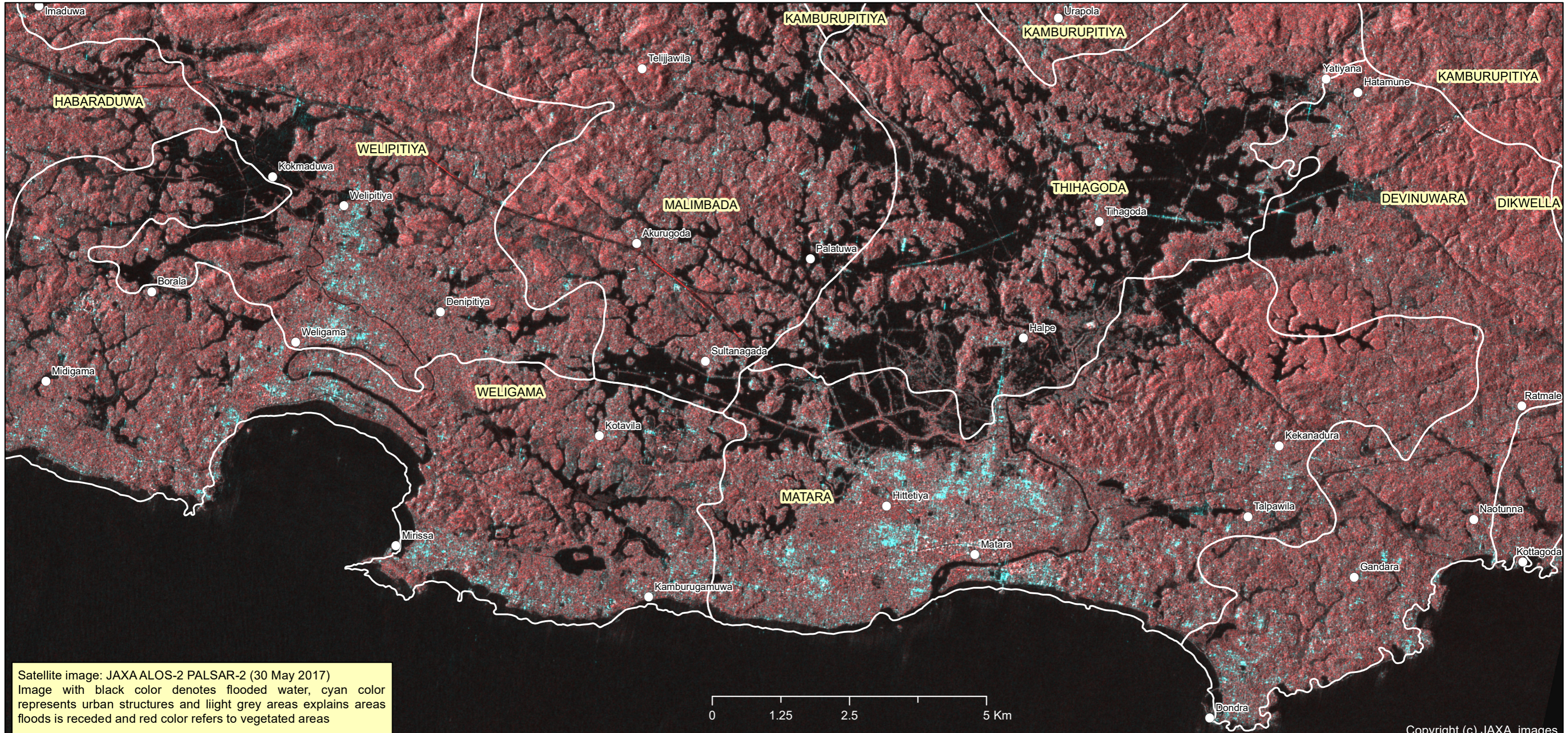
30 May 2017 | FL-2017-0001-SL |
Version 1

Map Prepared by

Data Provider

The analysis excluded permanent water bodies including reservoir, tanks and ponds and this reflects only the inundation extent. Please note the surface water extent mapped has not yet been validated in the

The depiction and use of boundaries, geographic names and related data shown in these maps are based on the sources they have been drawn from and quoted. These are neither error-free nor do they imply official endorsement or the position of IWMI.



Satellite image: JAXA ALOS-2 PALSAR-2 (30 May 2017)
Image with black color denotes flooded water, cyan color represents urban structures and light grey areas explains areas floods is receded and red color refers to vegetated areas