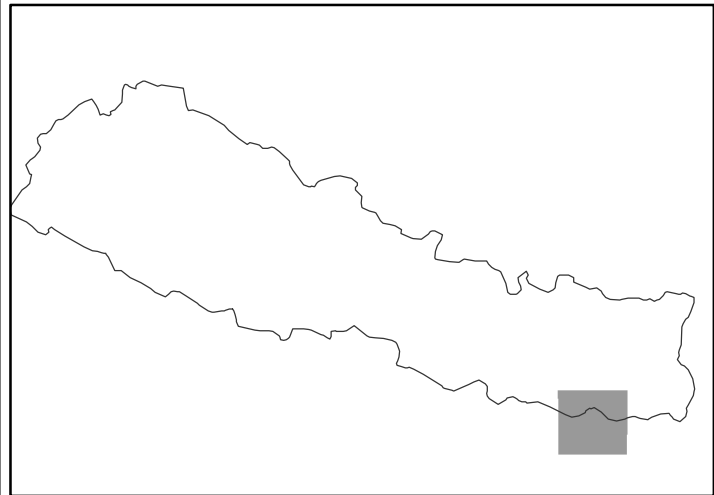


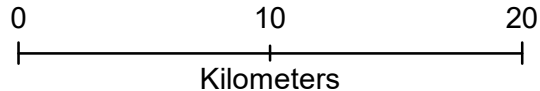
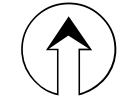
Map showing water bodies (river and flood water) in part of Nepal and India.
(as of 17 August 2017)

Glide: FL-2017-000107-NPL



Situation report::

There are widespread presence of waterlogging (white polygon) even after the flood peak has receded.

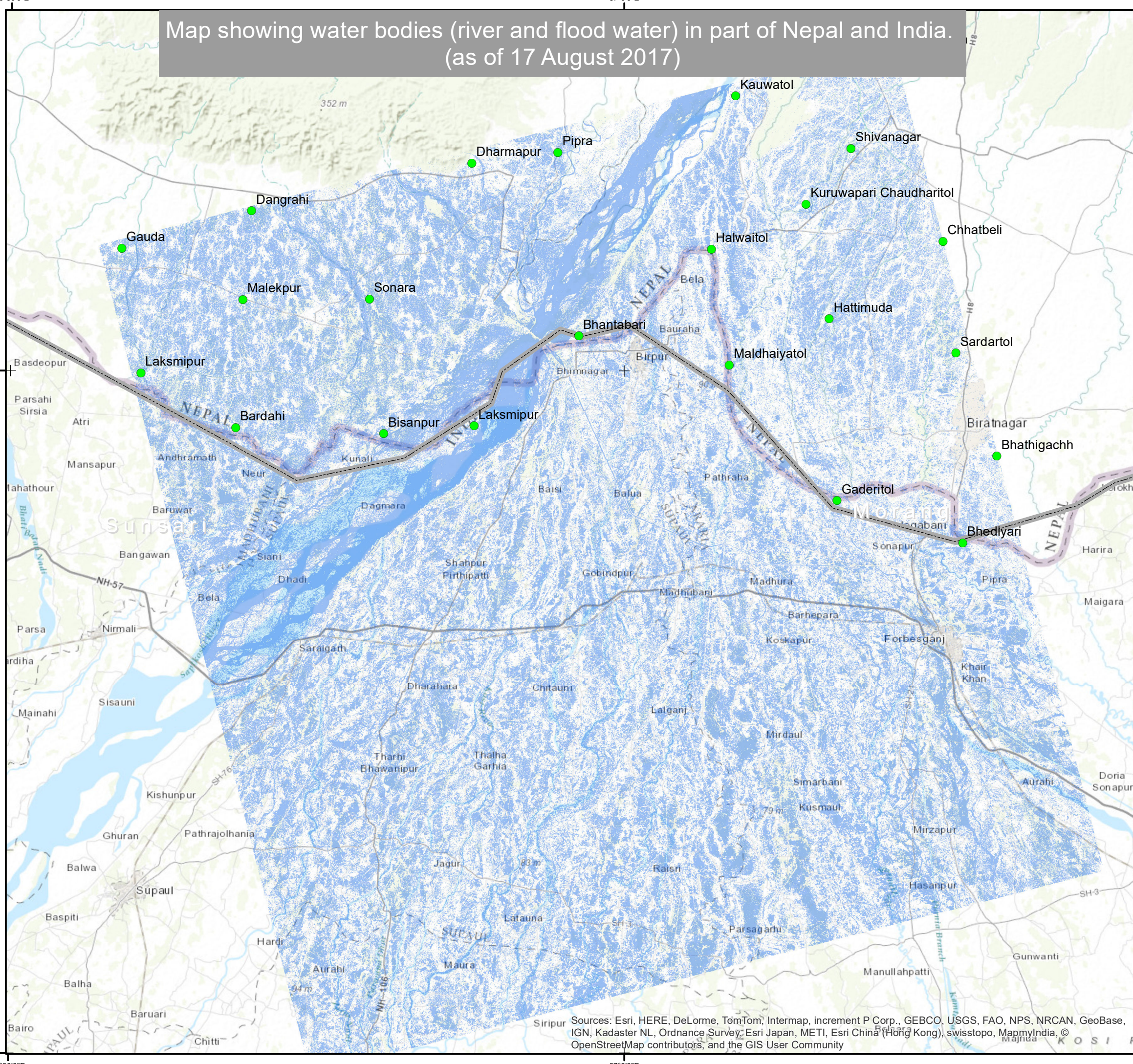


Legend

- Settlement
- National boundary
- Water bodies

Data: PALSAR-2
 Acquisition date: 17 August 2017
 Data source: Japanese Aerospace Exploration Agency
 Coordinate system: WGS_1984_UTM_Zone_45N
 Product generated date: 18 August 2017

Disclaimer:
 The information presented is entirely based on remote sensing derived without field validation.



Sources: Esri, HERE, DeLorme, TomTom, Intermap, increment P Corp., GEBCO, USGS, FAO, NPS, NRCAN, GeoBase, IGN, Kadaster NL, Ordnance Survey, Esri Japan, METI, Esri China (Hong Kong), swisstopo, MapmyIndia, © OpenStreetMap contributors, and the GIS User Community