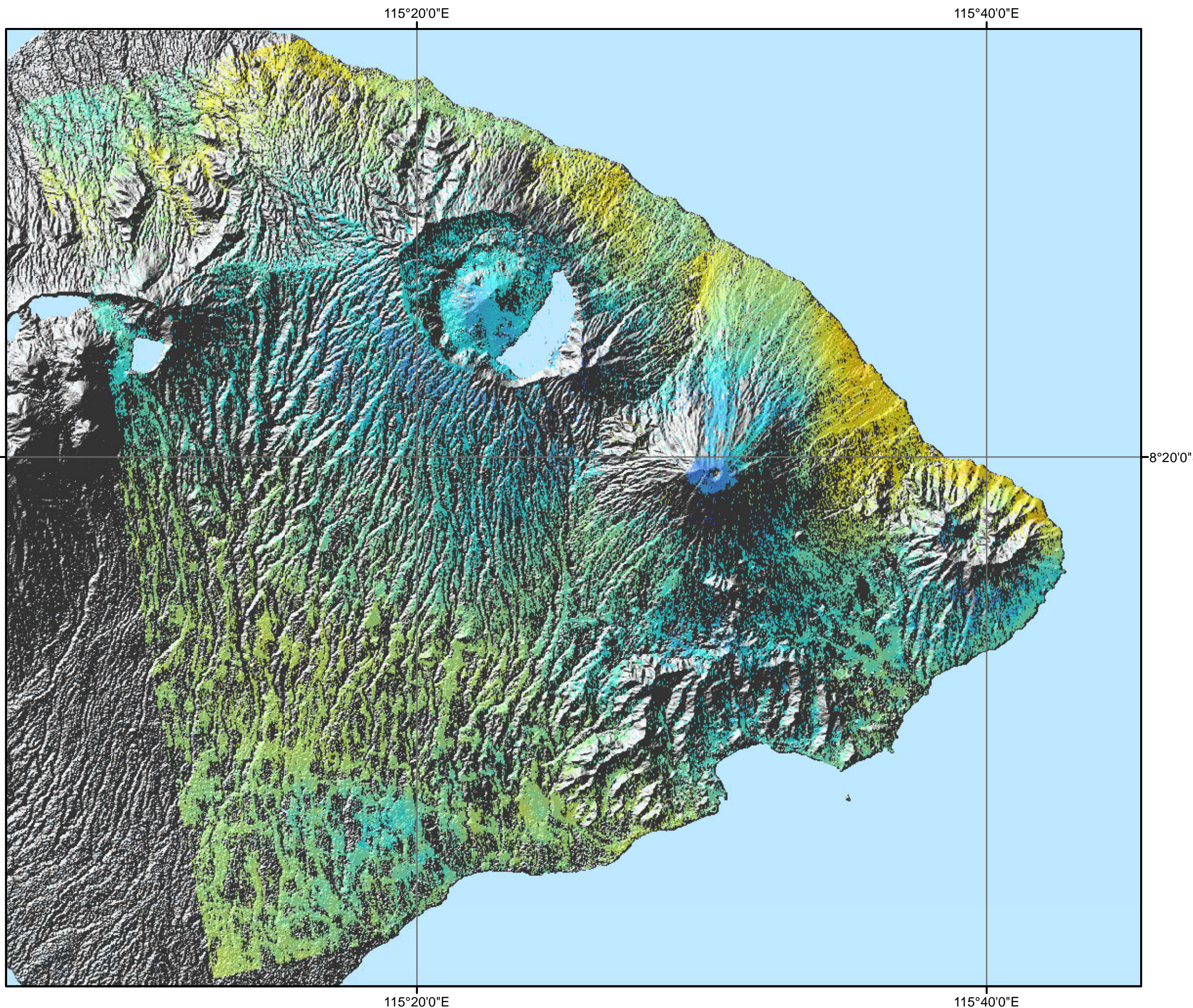
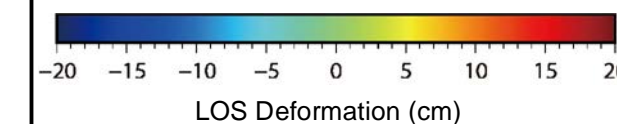


# Surface Deformation (LOS) over Mt. Agung, Indonesia by PSInSAR

14 Jun 2017 with respect to 02 Jun 2017



## Legend



## Map Information

Based on the PSInSAR analysis of Sentinel-1 satellite images acquired from 02 Jun 2017 to 11 Dec 2017, land surface deformation was observed over Mt. Agung, Indonesia. Within above mention period and using image acquired on 02 Jun 2017 as a reference, totally 16 deformations in different time period were derived by PSInSAR analysis. Due to the analysis has not yet been validated in the field, the depiction and related information presented here are not warranted to be error-free.

0 2,500 5,000 10,000 Meters

Scale: 1:250000 for A3 printing

Reference coordinates system:

Projection: WGS84

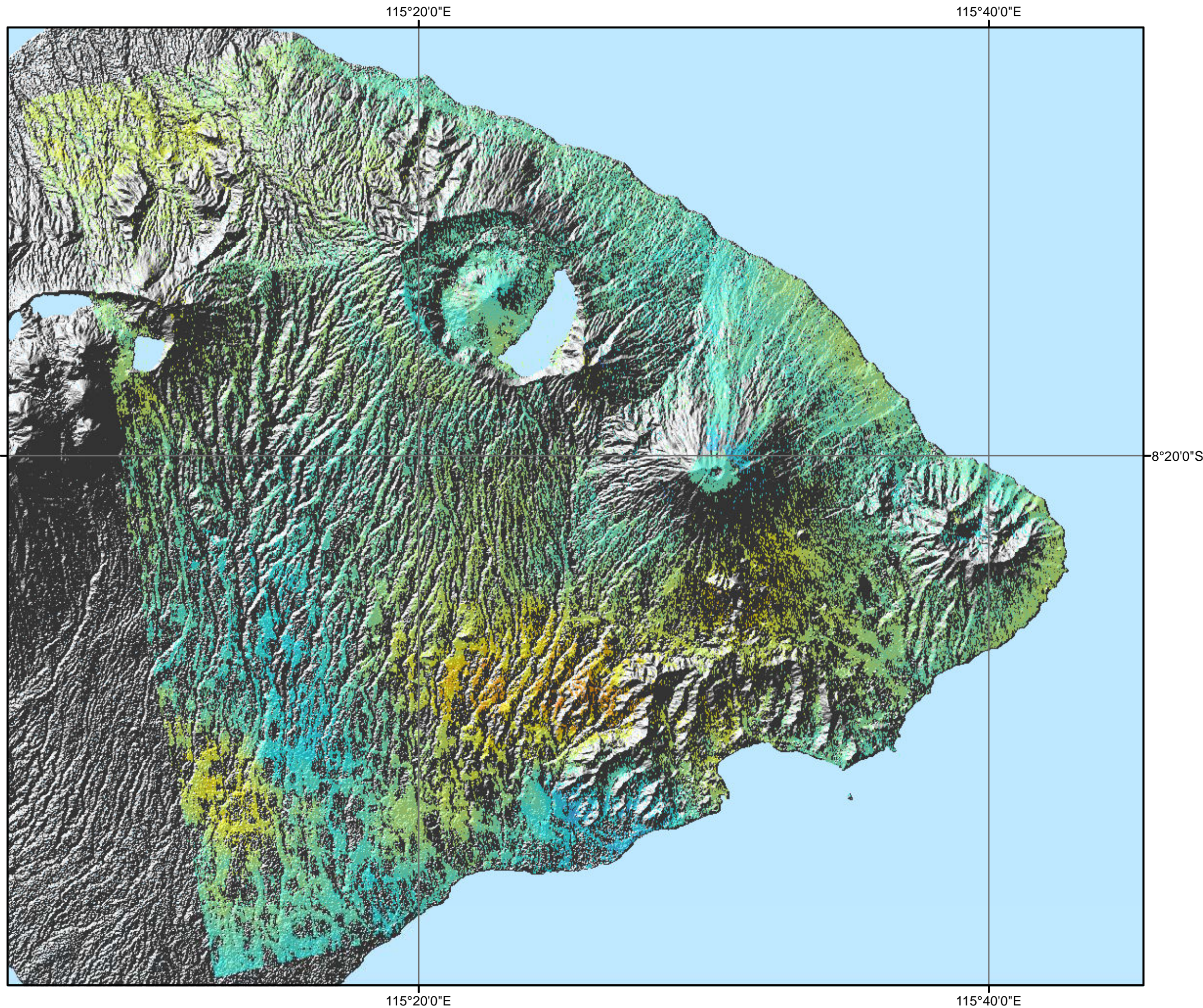
Spheroid: WGS84

Datum: WGS84

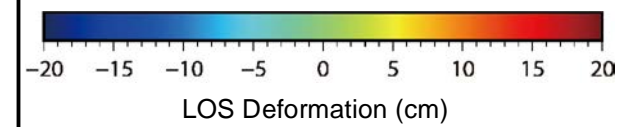


# Surface Deformation (LOS) over Mt. Agung, Indonesia by PSInSAR

26 Jun 2017 with respect to 02 Jun 2017

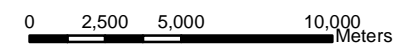


### Legend



### Map Information

Based on the PSInSAR analysis of Sentinel-1 satellite images acquired from 02 Jun 2017 to 11 Dec 2017, land surface deformation was observed over Mt. Agung, Indonesia. Within above mention period and using image acquired on 02 Jun 2017 as a reference, totally 16 deformations in different time period were derived by PSInSAR analysis. Due to the analysis has not yet been validated in the field, the depiction and related information presented here are not warranted to be error-free.



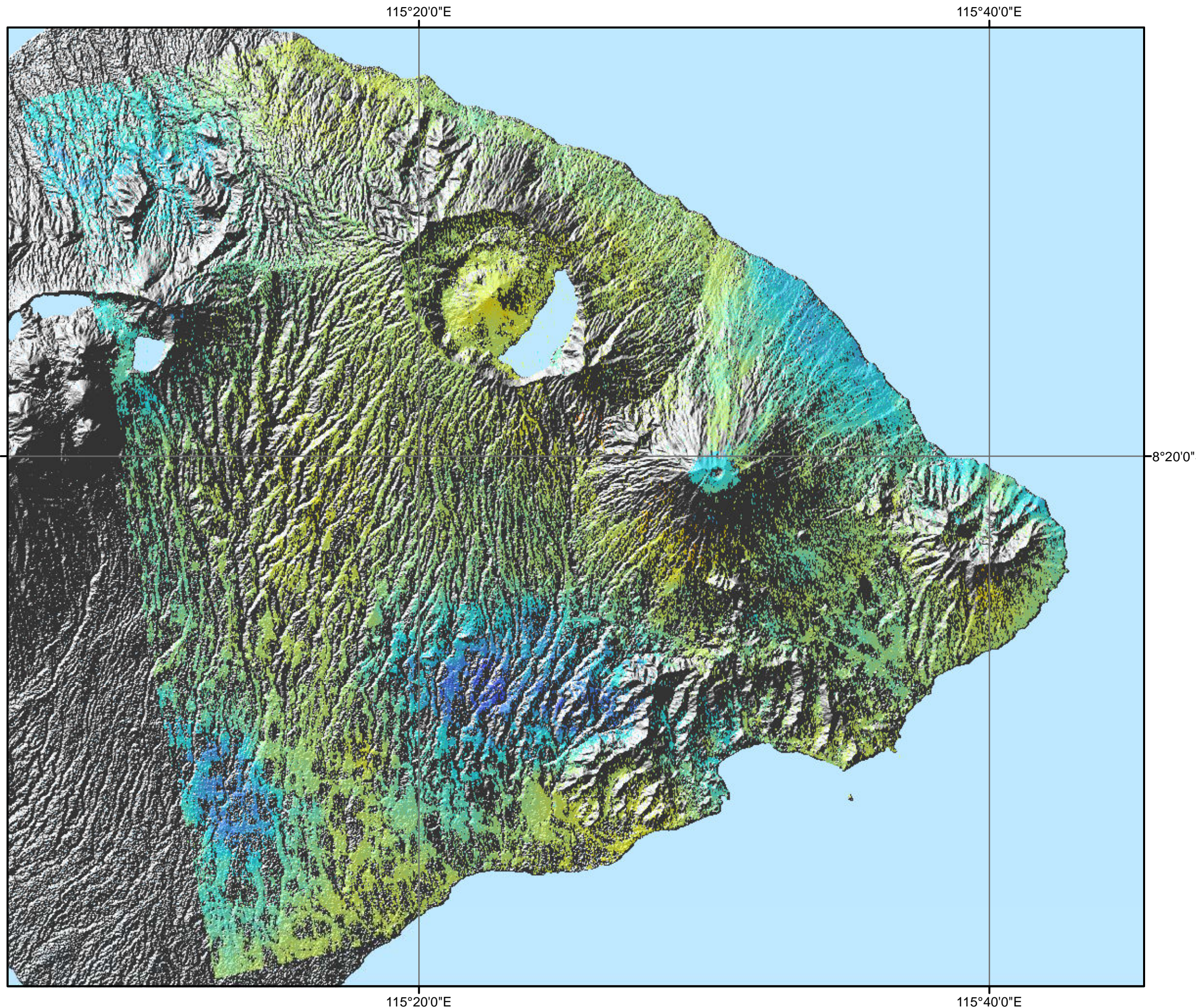
Scale: 1:250000 for A3 printing

Reference coordinates system:  
Projection: WGS84  
Spheroid: WGS84  
Datum: WGS84

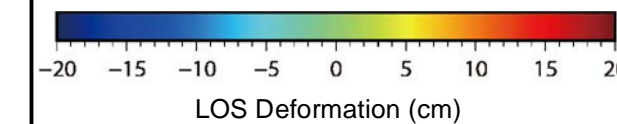


# Surface Deformation (LOS) over Mt. Agung, Indonesia by PSInSAR

08 Jul 2017 with respect to 02 Jun 2017



## Legend



## Map Information

Based on the PSInSAR analysis of Sentinel-1 satellite images acquired from 02 Jun 2017 to 11 Dec 2017, land surface deformation was observed over Mt. Agung, Indonesia. Within above mention period and using image acquired on 02 Jun 2017 as a reference, totally 16 deformations in different time period were derived by PSInSAR analysis. Due to the analysis has not yet been validated in the field, the depiction and related information presented here are not warranted to be error-free.



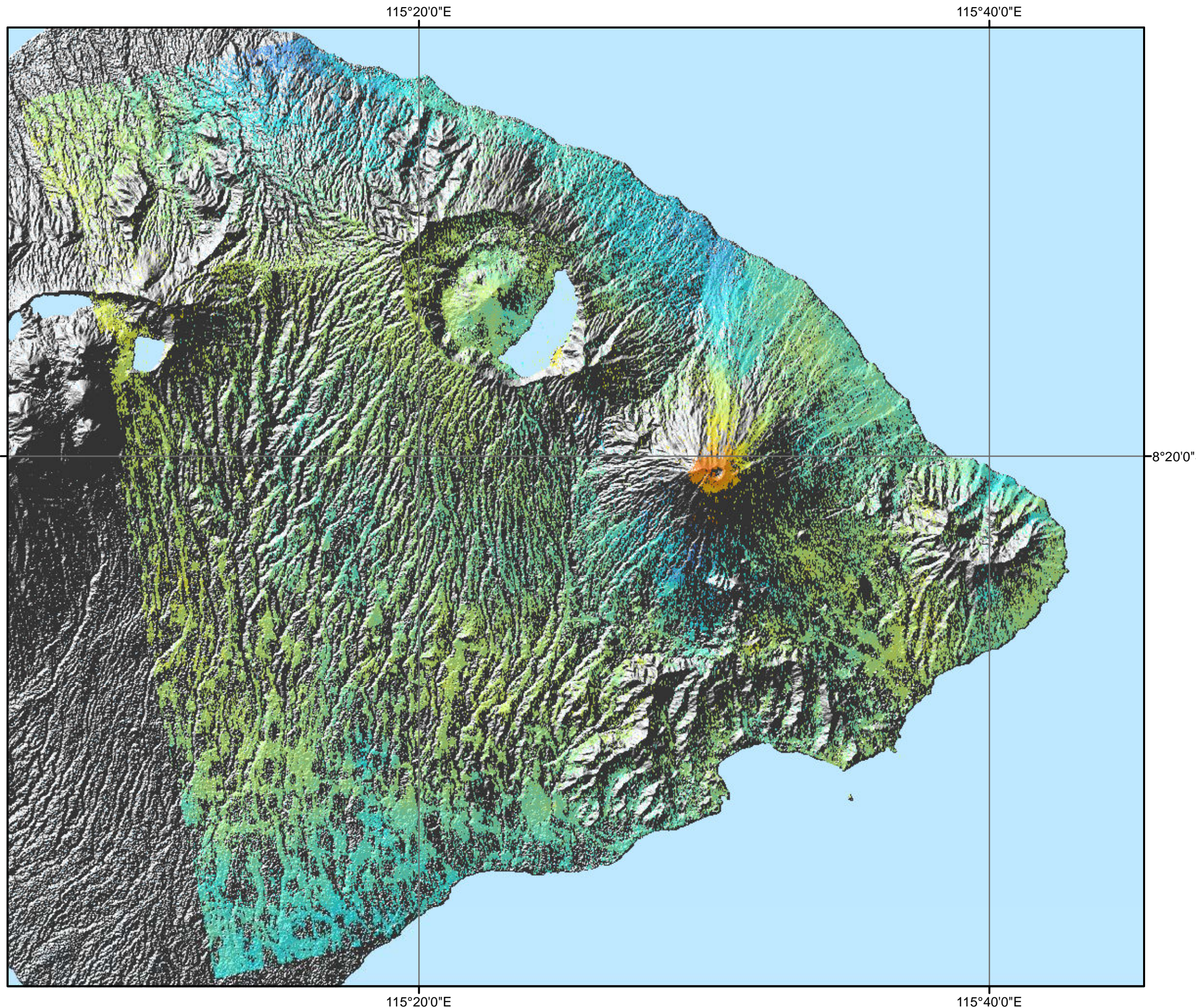
Scale: 1:250000 for A3 printing

Reference coordinates system:  
Projection: WGS84  
Spheroid: WGS84  
Datum: WGS84

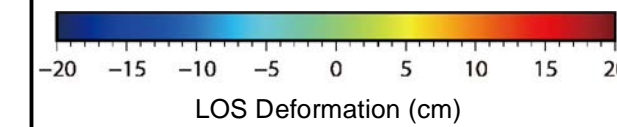


# Surface Deformation (LOS) over Mt. Agung, Indonesia by PSInSAR

20 Jul 2017 with respect to 02 Jun 2017



## Legend



## Map Information

Based on the PSInSAR analysis of Sentinel-1 satellite images acquired from 02 Jun 2017 to 11 Dec 2017, land surface deformation was observed over Mt. Agung, Indonesia. Within above mention period and using image acquired on 02 Jun 2017 as a reference, totally 16 deformations in different time period were derived by PSInSAR analysis. Due to the analysis has not yet been validated in the field, the depiction and related information presented here are not warranted to be error-free.

0 2,500 5,000 10,000 Meters

Scale: 1:250000 for A3 printing

Reference coordinates system:

Projection: WGS84

Spheroid: WGS84

Datum: WGS84

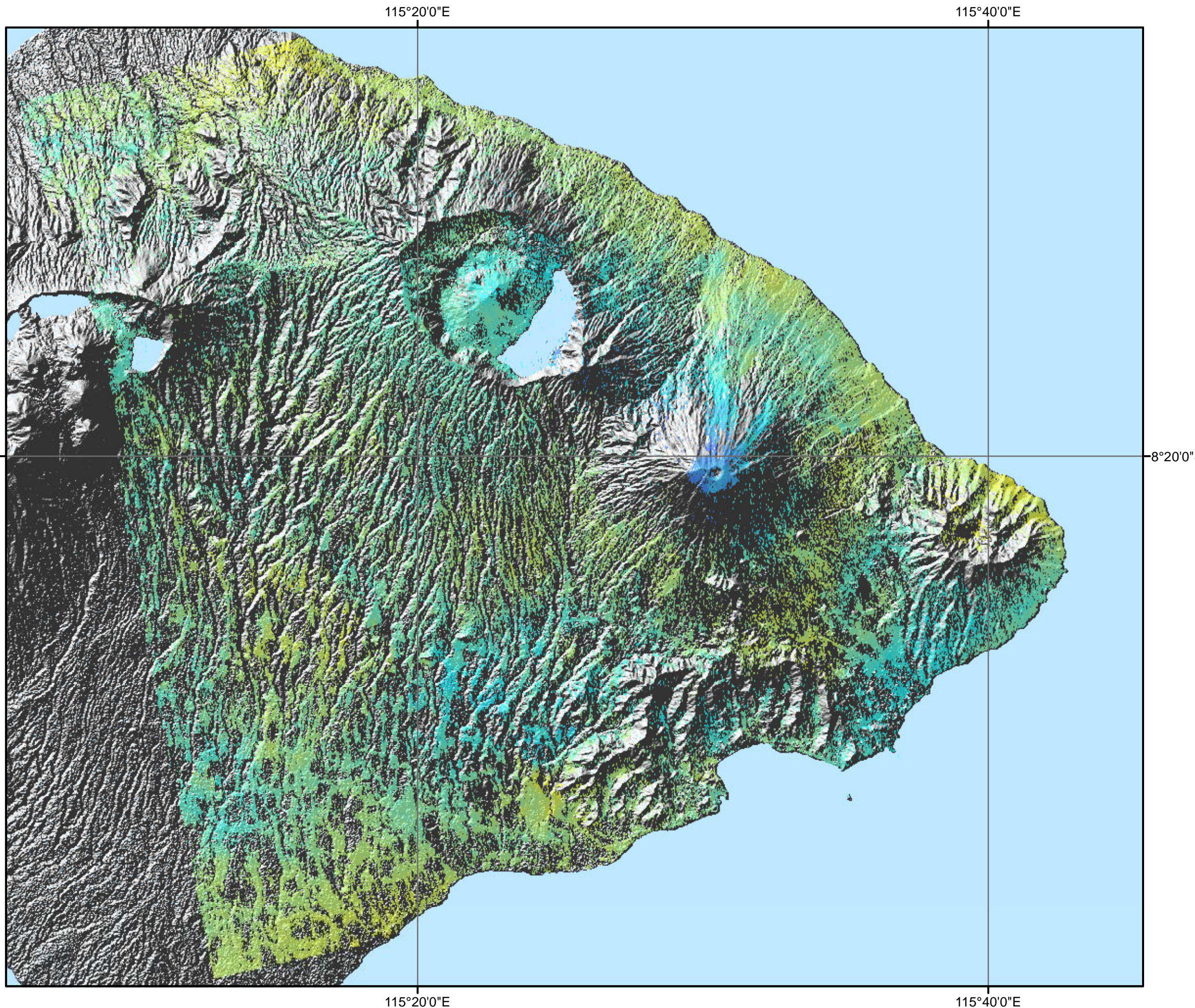


SENTINEL  
ASIA Sentinel Asia

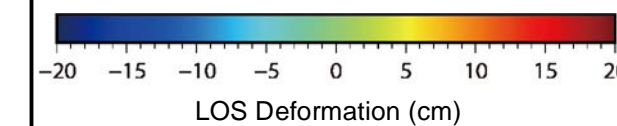


# Surface Deformation (LOS) over Mt. Agung, Indonesia by PSInSAR

01 Aug 2017 with respect to 02 Jun 2017



## Legend



## Map Information

Based on the PSInSAR analysis of Sentinel-1 satellite images acquired from 02 Jun 2017 to 11 Dec 2017, land surface deformation was observed over Mt. Agung, Indonesia. Within above mention period and using image acquired on 02 Jun 2017 as a reference, totally 16 deformations in different time period were derived by PSInSAR analysis. Due to the analysis has not yet been validated in the field, the depiction and related information presented here are not warranted to be error-free.

0 2,500 5,000 10,000 Meters

Scale: 1:250000 for A3 printing

Reference coordinates system:

Projection: WGS84

Spheroid: WGS84

Datum: WGS84

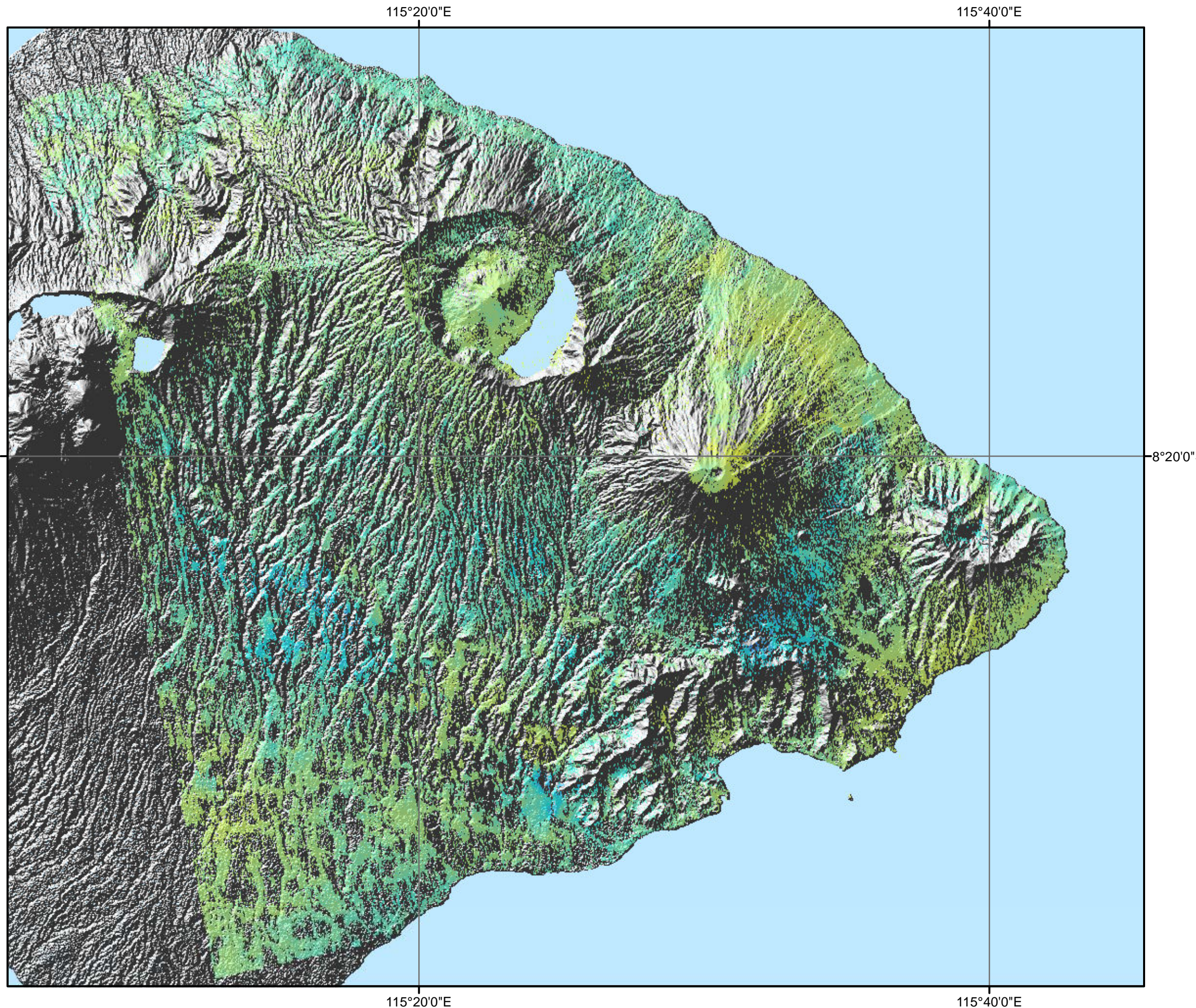


SENTINEL ASIA Sentinel Asia

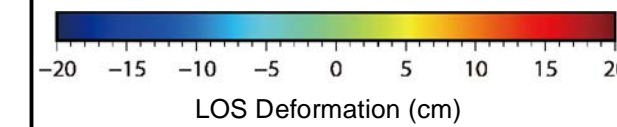


# Surface Deformation (LOS) over Mt. Agung, Indonesia by PSInSAR

13 Aug 2017 with respect to 02 Jun 2017



## Legend



## Map Information

Based on the PSInSAR analysis of Sentinel-1 satellite images acquired from 02 Jun 2017 to 11 Dec 2017, land surface deformation was observed over Mt. Agung, Indonesia. Within above mention period and using image acquired on 02 Jun 2017 as a reference, totally 16 deformations in different time period were derived by PSInSAR analysis. Due to the analysis has not yet been validated in the field, the depiction and related information presented here are not warranted to be error-free.



Scale: 1:250000 for A3 printing

Reference coordinates system:

Projection: WGS84

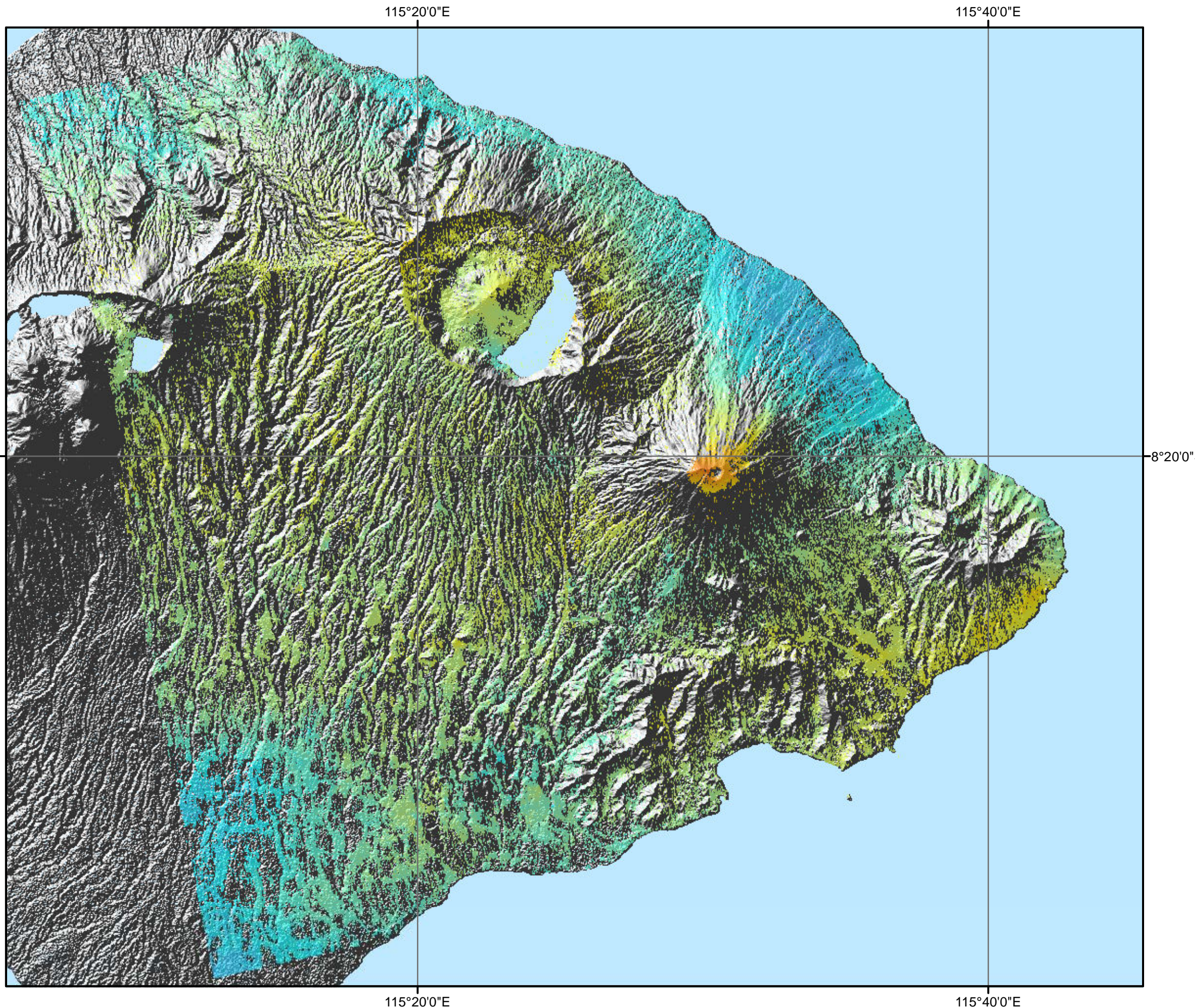
Spheroid: WGS84

Datum: WGS84

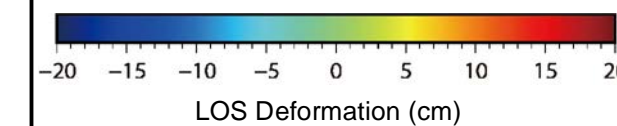


# Surface Deformation (LOS) over Mt. Agung, Indonesia by PSInSAR

25 Aug 2017 with respect to 02 Jun 2017



## Legend



## Map Information

Based on the PSInSAR analysis of Sentinel-1 satellite images acquired from 02 Jun 2017 to 11 Dec 2017, land surface deformation was observed over Mt. Agung, Indonesia. Within above mention period and using image acquired on 02 Jun 2017 as a reference, totally 16 deformations in different time period were derived by PSInSAR analysis. Due to the analysis has not yet been validated in the field, the depiction and related information presented here are not warranted to be error-free.

0 2,500 5,000 10,000 Meters

Scale: 1:250000 for A3 printing

Reference coordinates system:

Projection: WGS84

Spheroid: WGS84

Datum: WGS84

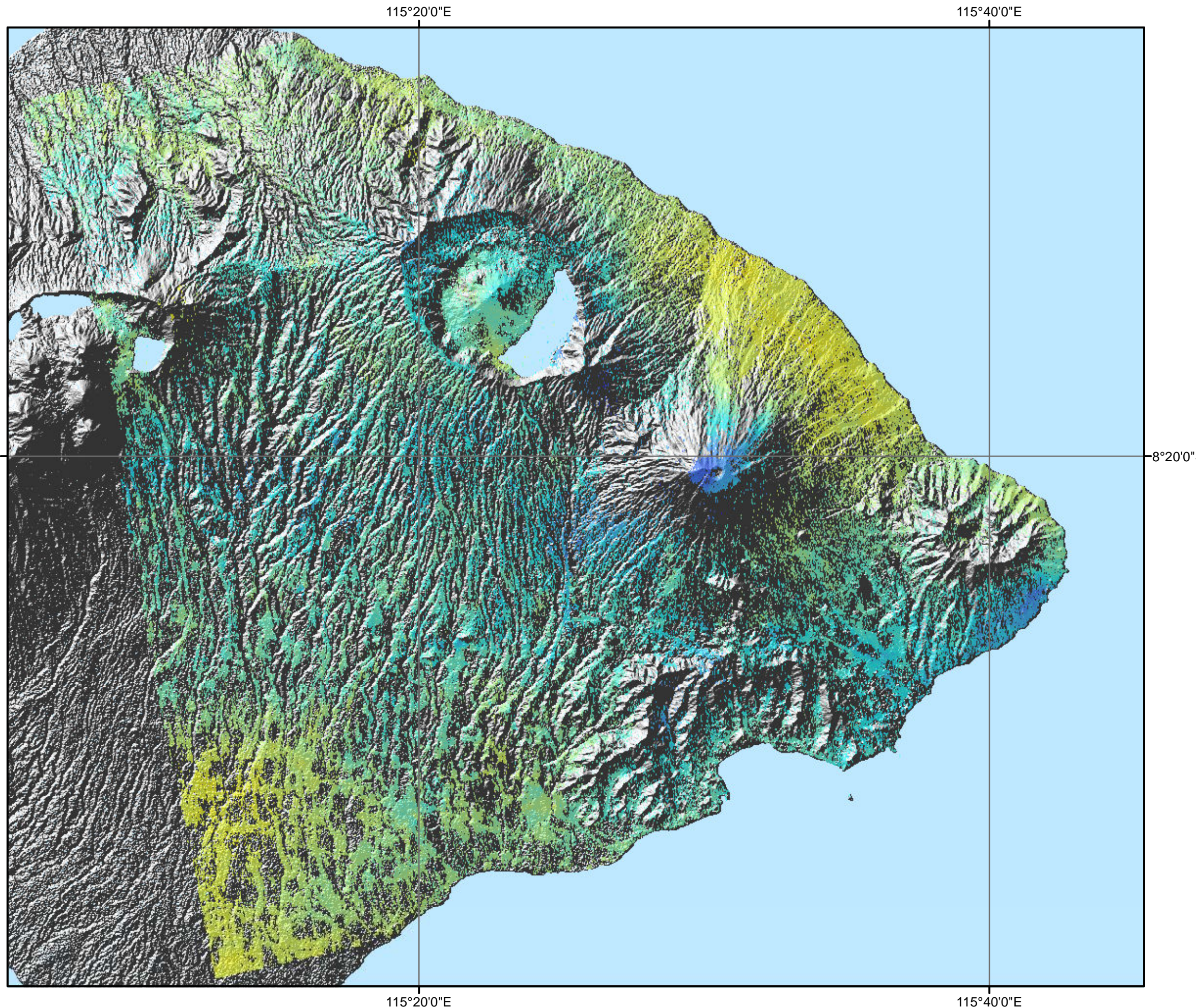


SENTINEL  
ASIA Sentinel Asia

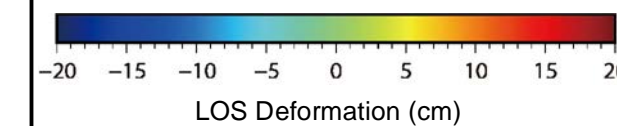


# Surface Deformation (LOS) over Mt. Agung, Indonesia by PSInSAR

06 Sep 2017 with respect to 02 Jun 2017



## Legend



## Map Information

Based on the PSInSAR analysis of Sentinel-1 satellite images acquired from 02 Jun 2017 to 11 Dec 2017, land surface deformation was observed over Mt. Agung, Indonesia. Within above mention period and using image acquired on 02 Jun 2017 as a reference, totally 16 deformations in different time period were derived by PSInSAR analysis. Due to the analysis has not yet been validated in the field, the depiction and related information presented here are not warranted to be error-free.

0 2,500 5,000 10,000 Meters

Scale: 1:250000 for A3 printing

Reference coordinates system:

Projection: WGS84

Spheroid: WGS84

Datum: WGS84



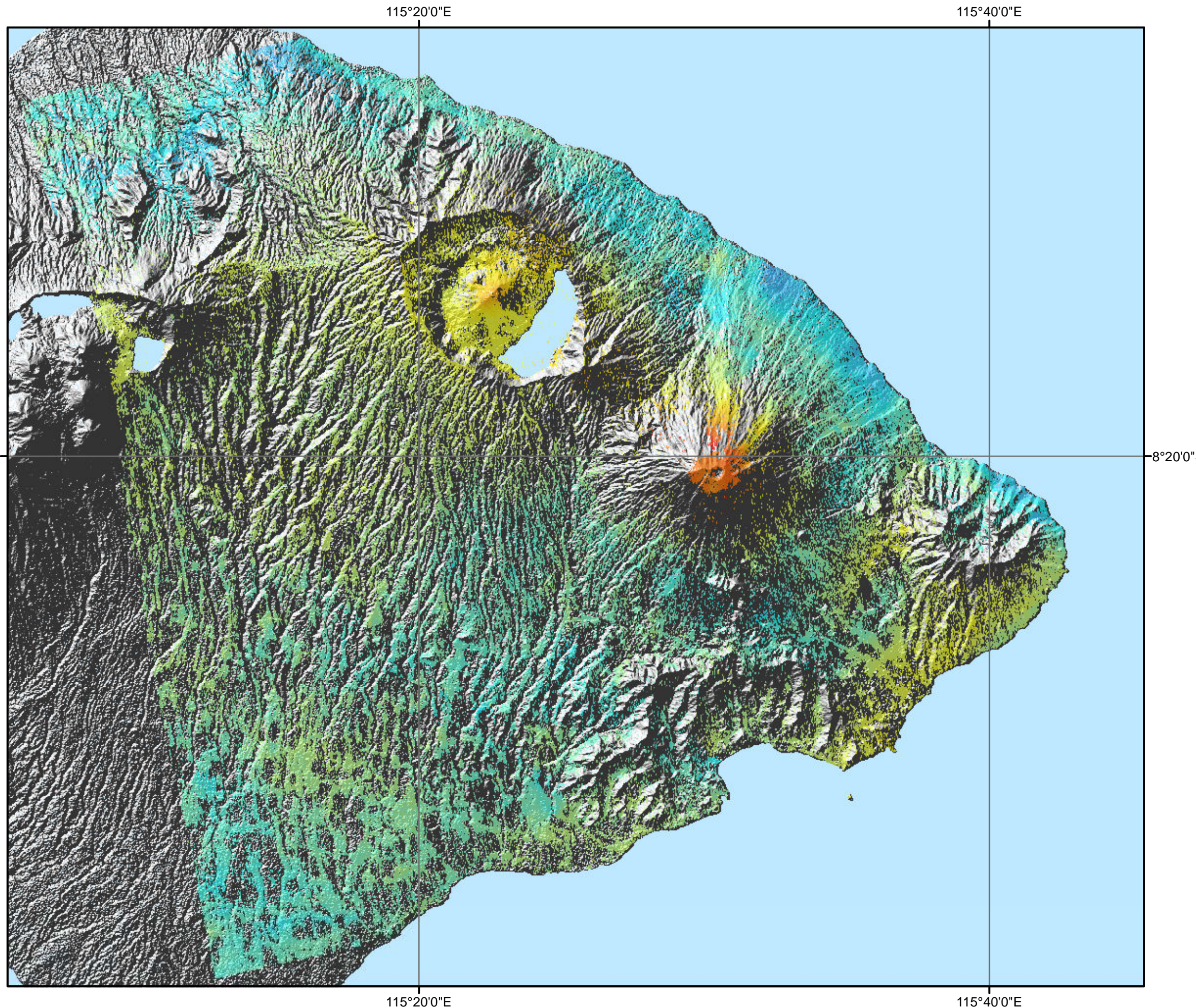
SENTINEL  
ASIA Sentinel Asia



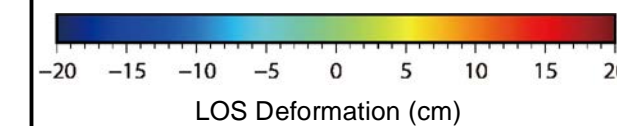


# Surface Deformation (LOS) over Mt. Agung, Indonesia by PSInSAR

18 Sep 2017 with respect to 02 Jun 2017



## Legend



## Map Information

Based on the PSInSAR analysis of Sentinel-1 satellite images acquired from 02 Jun 2017 to 11 Dec 2017, land surface deformation was observed over Mt. Agung, Indonesia. Within above mention period and using image acquired on 02 Jun 2017 as a reference, totally 16 deformations in different time period were derived by PSInSAR analysis. Due to the analysis has not yet been validated in the field, the depiction and related information presented here are not warranted to be error-free.

0 2,500 5,000 10,000 Meters

Scale: 1:250000 for A3 printing

Reference coordinates system:

Projection: WGS84

Spheroid: WGS84

Datum: WGS84

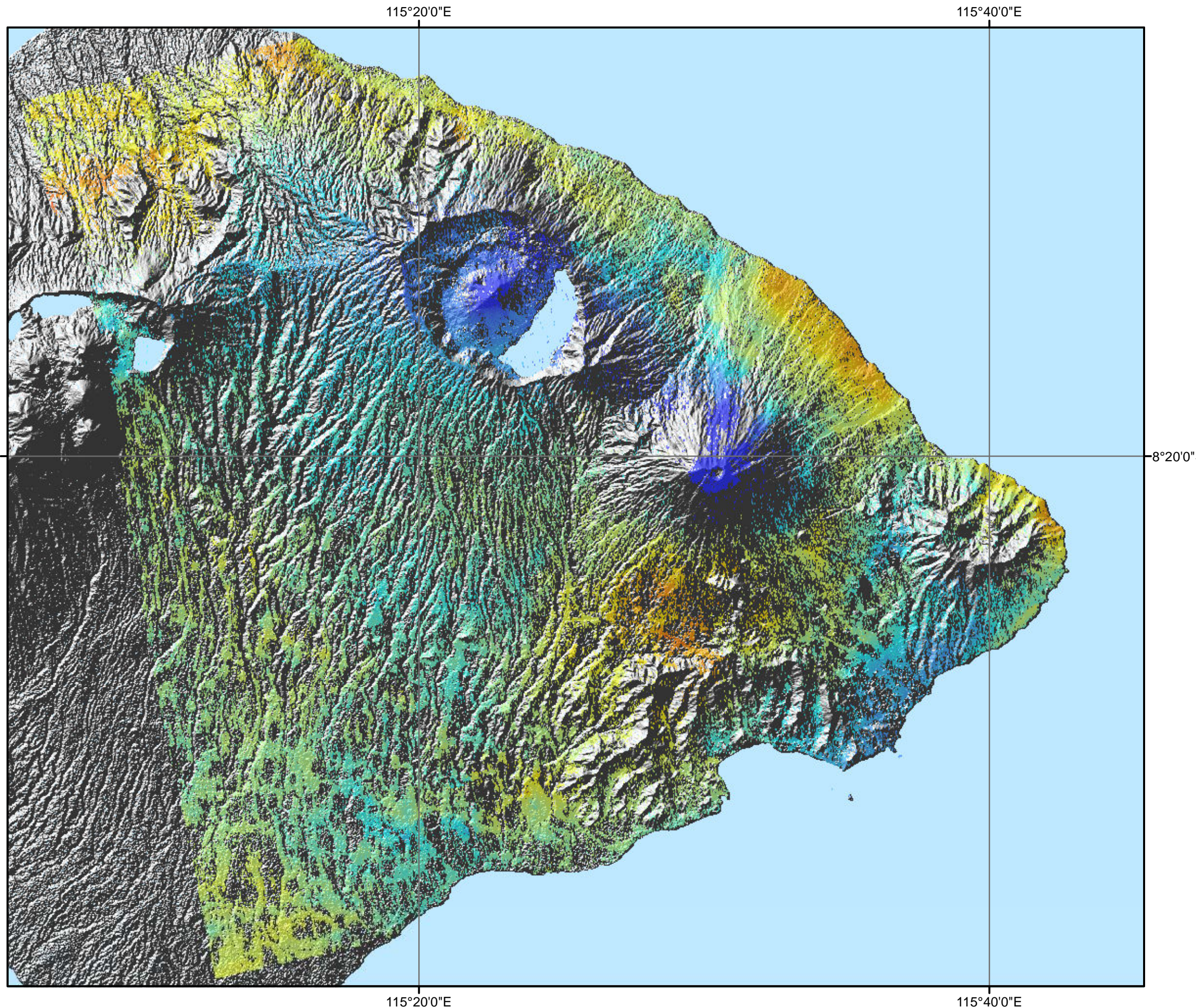


SENTINEL  
ASIA Sentinel Asia

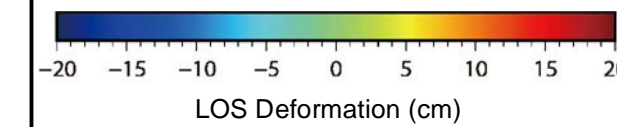


# Surface Deformation (LOS) over Mt. Agung, Indonesia by PSInSAR

30 Sep 2017 with respect to 02 Jun 2017



## Legend



## Map Information

Based on the PSInSAR analysis of Sentinel-1 satellite images acquired from 02 Jun 2017 to 11 Dec 2017, land surface deformation was observed over Mt. Agung, Indonesia. Within above mention period and using image acquired on 02 Jun 2017 as a reference, totally 16 deformations in different time period were derived by PSInSAR analysis. Due to the analysis has not yet been validated in the field, the depiction and related information presented here are not warranted to be error-free.

0 2,500 5,000 10,000 Meters

Scale: 1:250000 for A3 printing

Reference coordinates system:

Projection: WGS84

Spheroid: WGS84

Datum: WGS84

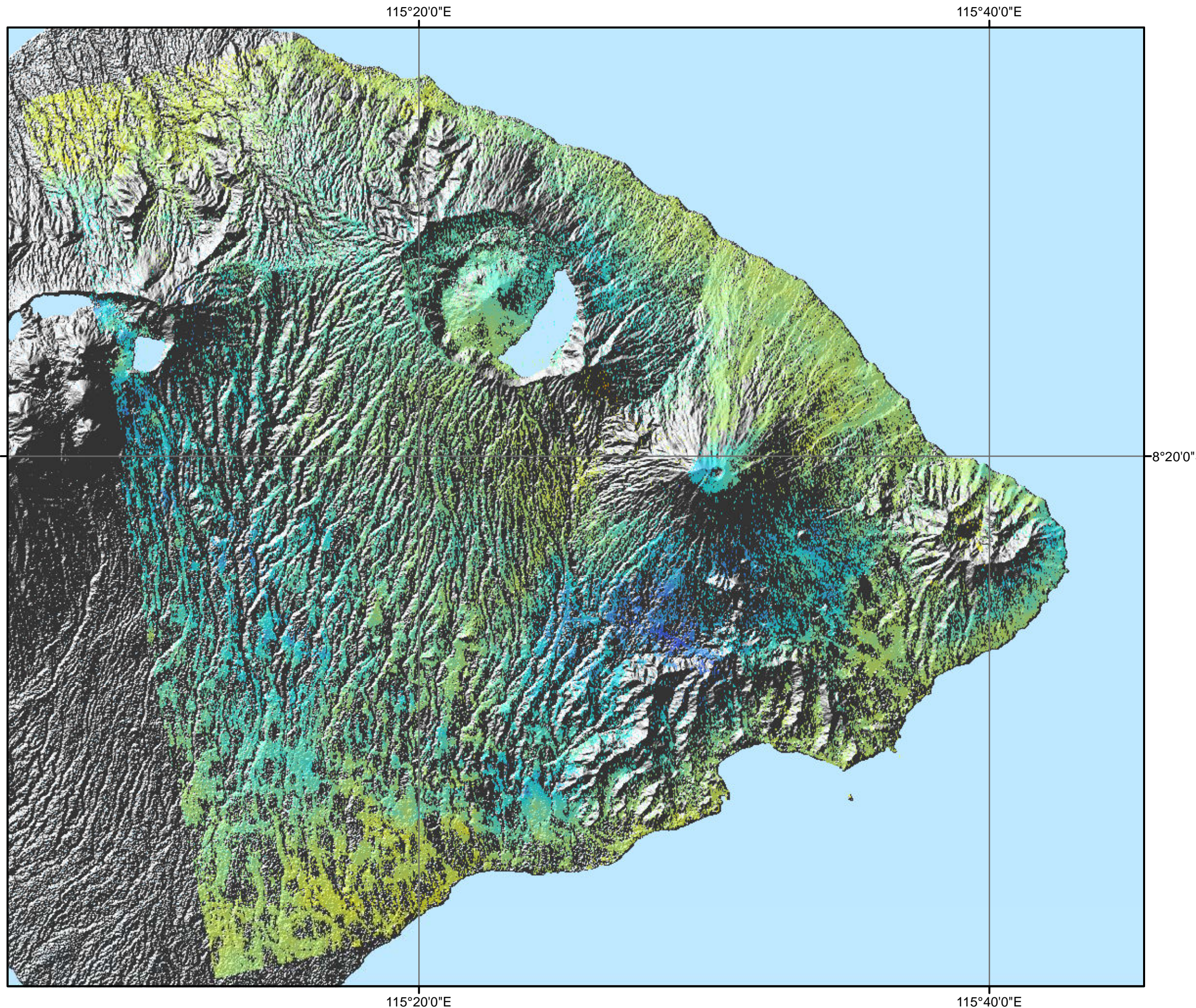


SENTINEL  
ASIA Sentinel Asia

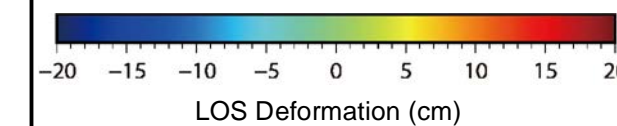


# Surface Deformation (LOS) over Mt. Agung, Indonesia by PSInSAR

12 Oct 2017 with respect to 02 Jun 2017



## Legend



## Map Information

Based on the PSInSAR analysis of Sentinel-1 satellite images acquired from 02 Jun 2017 to 11 Dec 2017, land surface deformation was observed over Mt. Agung, Indonesia. Within above mention period and using image acquired on 02 Jun 2017 as a reference, totally 16 deformations in different time period were derived by PSInSAR analysis. Due to the analysis has not yet been validated in the field, the depiction and related information presented here are not warranted to be error-free.



Scale: 1:250000 for A3 printing

Reference coordinates system:

Projection: WGS84

Spheroid: WGS84

Datum: WGS84

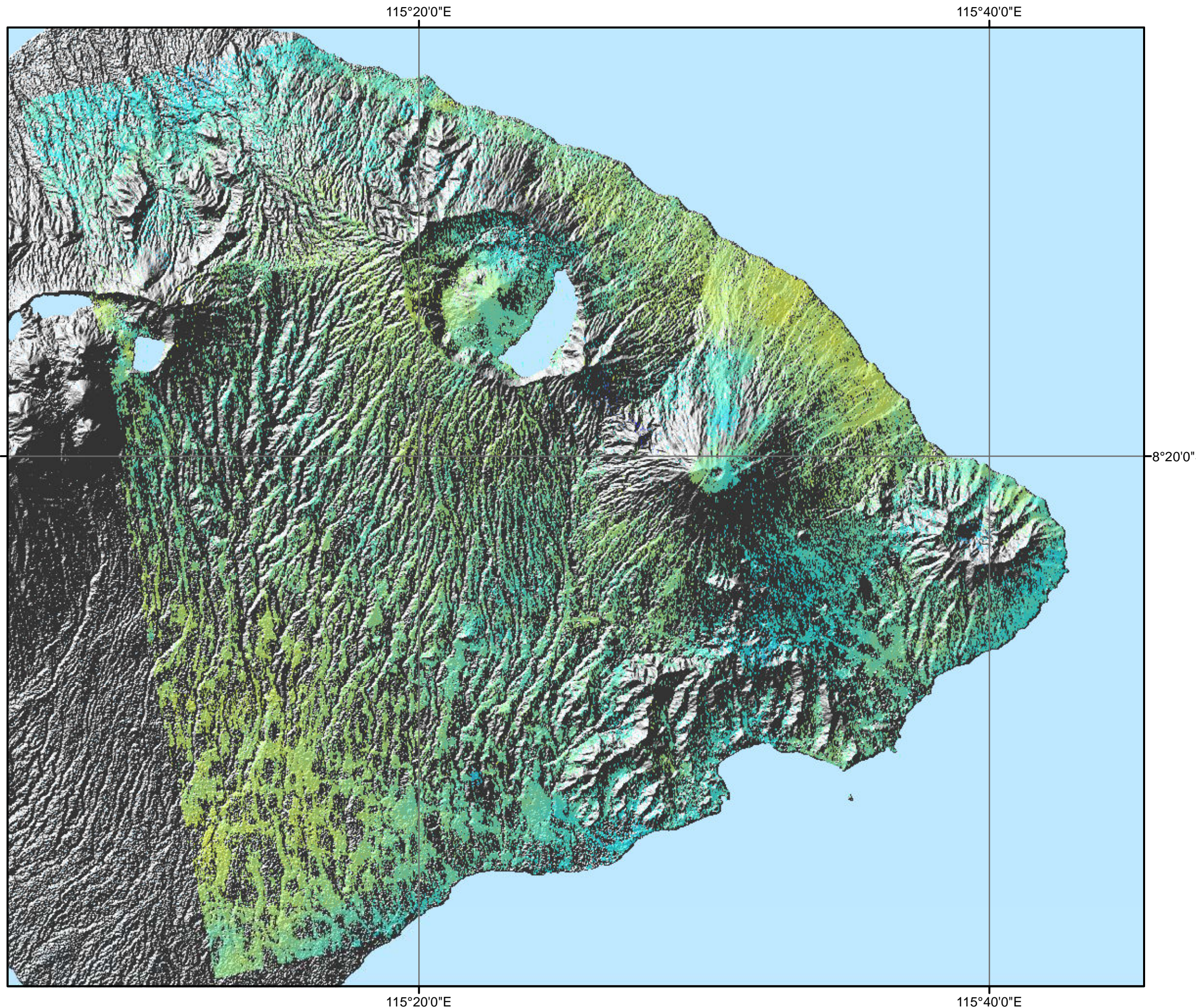


SENTINEL  
ASIA Sentinel Asia

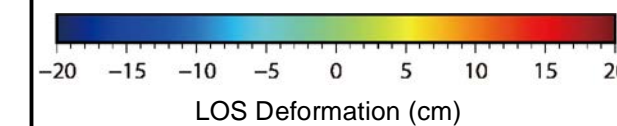


# Surface Deformation (LOS) over Mt. Agung, Indonesia by PSInSAR

24 Oct 2017 with respect to 02 Jun 2017



## Legend



## Map Information

Based on the PSInSAR analysis of Sentinel-1 satellite images acquired from 02 Jun 2017 to 11 Dec 2017, land surface deformation was observed over Mt. Agung, Indonesia. Within above mention period and using image acquired on 02 Jun 2017 as a reference, totally 16 deformations in different time period were derived by PSInSAR analysis. Due to the analysis has not yet been validated in the field, the depiction and related information presented here are not warranted to be error-free.

0 2,500 5,000 10,000 Meters

Scale: 1:250000 for A3 printing

Reference coordinates system:

Projection: WGS84

Spheroid: WGS84

Datum: WGS84

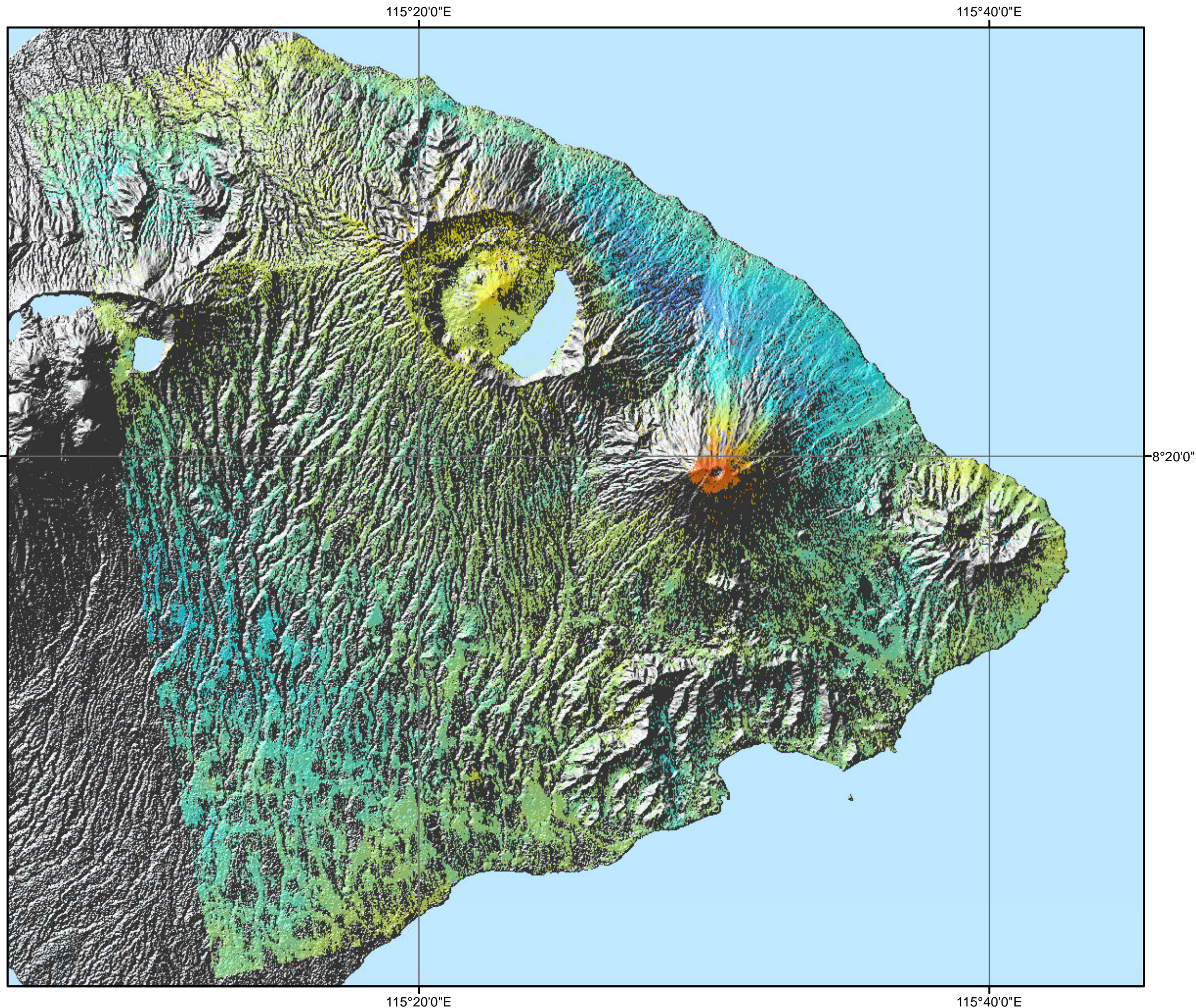


SENTINEL  
ASIA Sentinel Asia

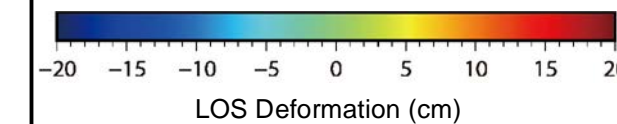


# Surface Deformation (LOS) over Mt. Agung, Indonesia by PSInSAR

05 Nov 2017 with respect to 02 Jun 2017



## Legend



## Map Information

Based on the PSInSAR analysis of Sentinel-1 satellite images acquired from 02 Jun 2017 to 11 Dec 2017, land surface deformation was observed over Mt. Agung, Indonesia. Within above mention period and using image acquired on 02 Jun 2017 as a reference, totally 16 deformations in different time period were derived by PSInSAR analysis. Due to the analysis has not yet been validated in the field, the depiction and related information presented here are not warranted to be error-free.

0 2,500 5,000 10,000 Meters

Scale: 1:250000 for A3 printing

Reference coordinates system:

Projection: WGS84

Spheroid: WGS84

Datum: WGS84

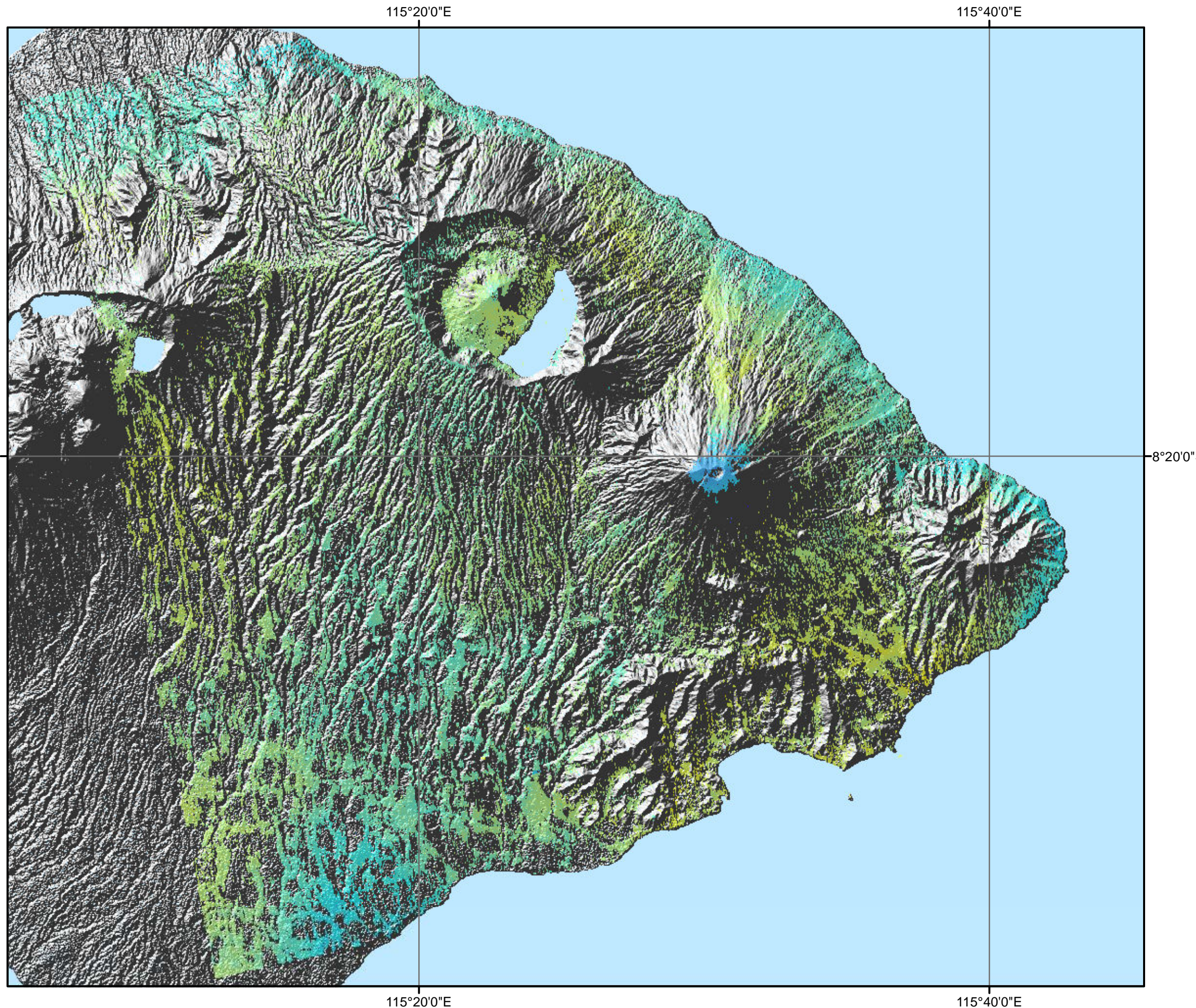


SENTINEL  
ASIA Sentinel Asia

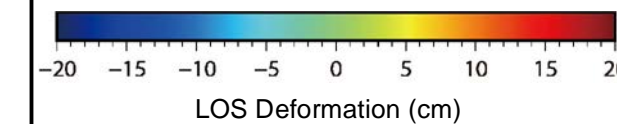


# Surface Deformation (LOS) over Mt. Agung, Indonesia by PSInSAR

17 Nov 2017 with respect to 02 Jun 2017



## Legend



## Map Information

Based on the PSInSAR analysis of Sentinel-1 satellite images acquired from 02 Jun 2017 to 11 Dec 2017, land surface deformation was observed over Mt. Agung, Indonesia. Within above mention period and using image acquired on 02 Jun 2017 as a reference, totally 16 deformations in different time period were derived by PSInSAR analysis. Due to the analysis has not yet been validated in the field, the depiction and related information presented here are not warranted to be error-free.

0 2,500 5,000 10,000 Meters

Scale: 1:250000 for A3 printing

Reference coordinates system:

Projection: WGS84

Spheroid: WGS84

Datum: WGS84

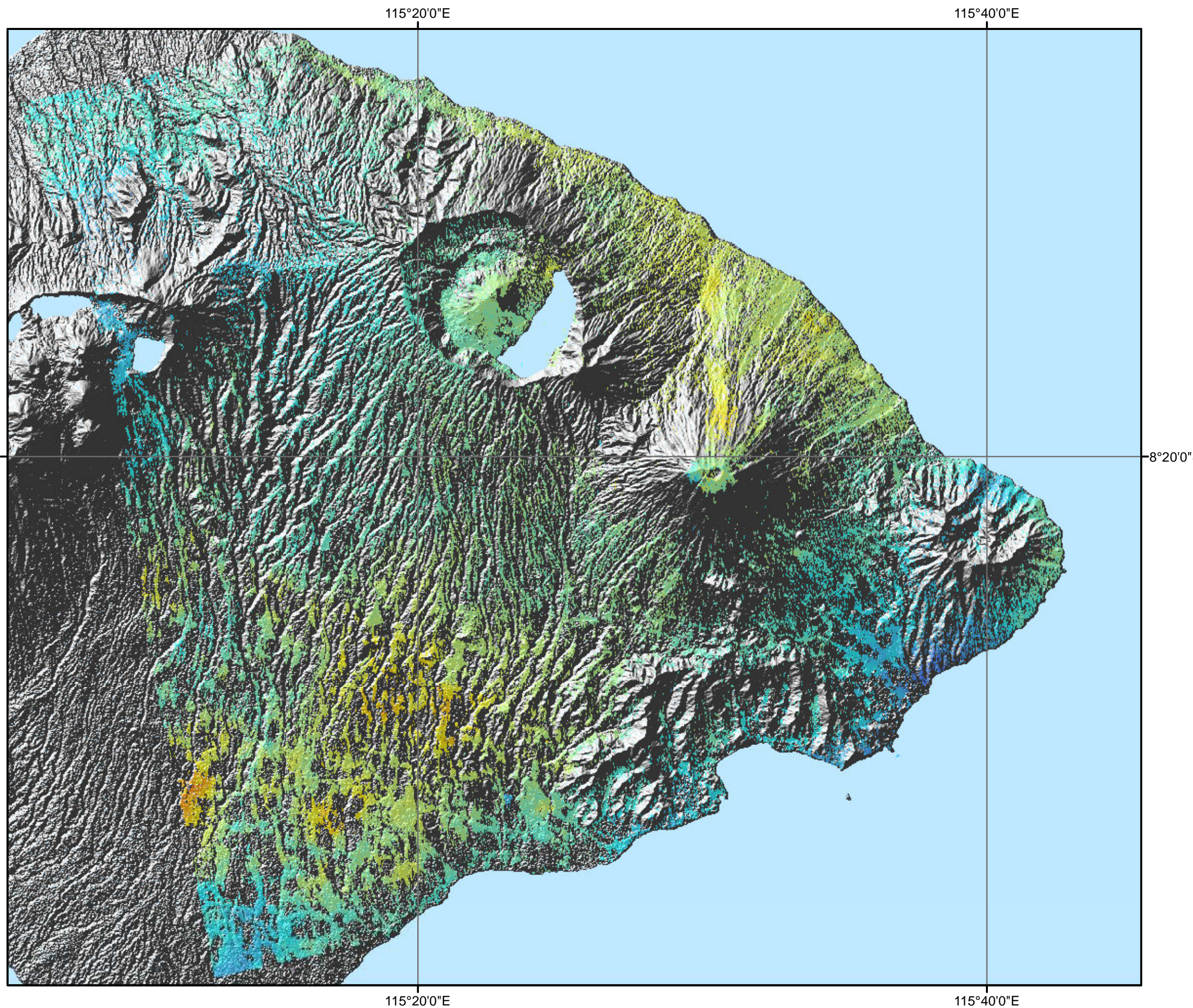


SENTINEL  
ASIA Sentinel Asia

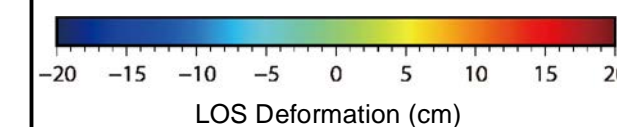


# Surface Deformation (LOS) over Mt. Agung, Indonesia by PSInSAR

29 Nov 2017 with respect to 02 Jun 2017

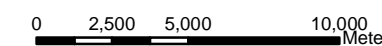


## Legend



## Map Information

Based on the PSInSAR analysis of Sentinel-1 satellite images acquired from 02 Jun 2017 to 11 Dec 2017, land surface deformation was observed over Mt. Agung, Indonesia. Within above mention period and using image acquired on 02 Jun 2017 as a reference, totally 16 deformations in different time period were derived by PSInSAR analysis. Due to the analysis has not yet been validated in the field, the depiction and related information presented here are not warranted to be error-free.



Scale: 1:250000 for A3 printing

Reference coordinates system:

Projection: WGS84

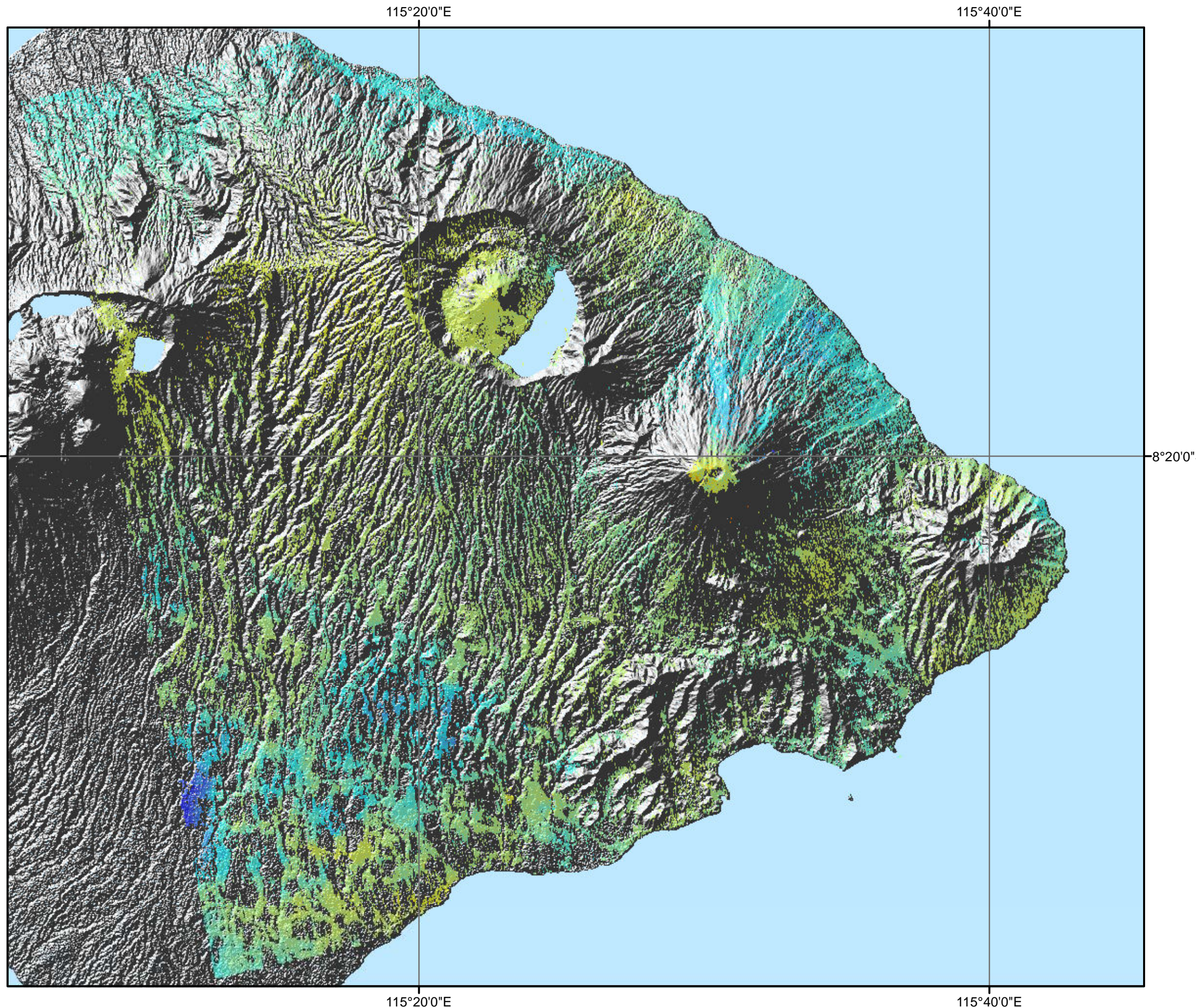
Spheroid: WGS84

Datum: WGS84

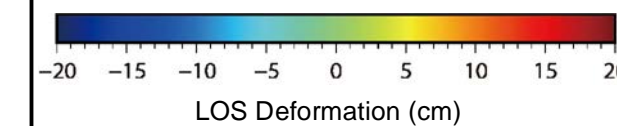


# Surface Deformation (LOS) over Mt. Agung, Indonesia by PSInSAR

11 Dec 2017 with respect to 02 Jun 2017



## Legend



## Map Information

Based on the PSInSAR analysis of Sentinel-1 satellite images acquired from 02 Jun 2017 to 11 Dec 2017, land surface deformation was observed over Mt. Agung, Indonesia. Within above mention period and using image acquired on 02 Jun 2017 as a reference, totally 16 deformations in different time period were derived by PSInSAR analysis. Due to the analysis has not yet been validated in the field, the depiction and related information presented here are not warranted to be error-free.

0 2,500 5,000 10,000 Meters

Scale: 1:250000 for A3 printing

Reference coordinates system:

Projection: WGS84

Spheroid: WGS84

Datum: WGS84



SENTINEL  
ASIA Sentinel Asia

