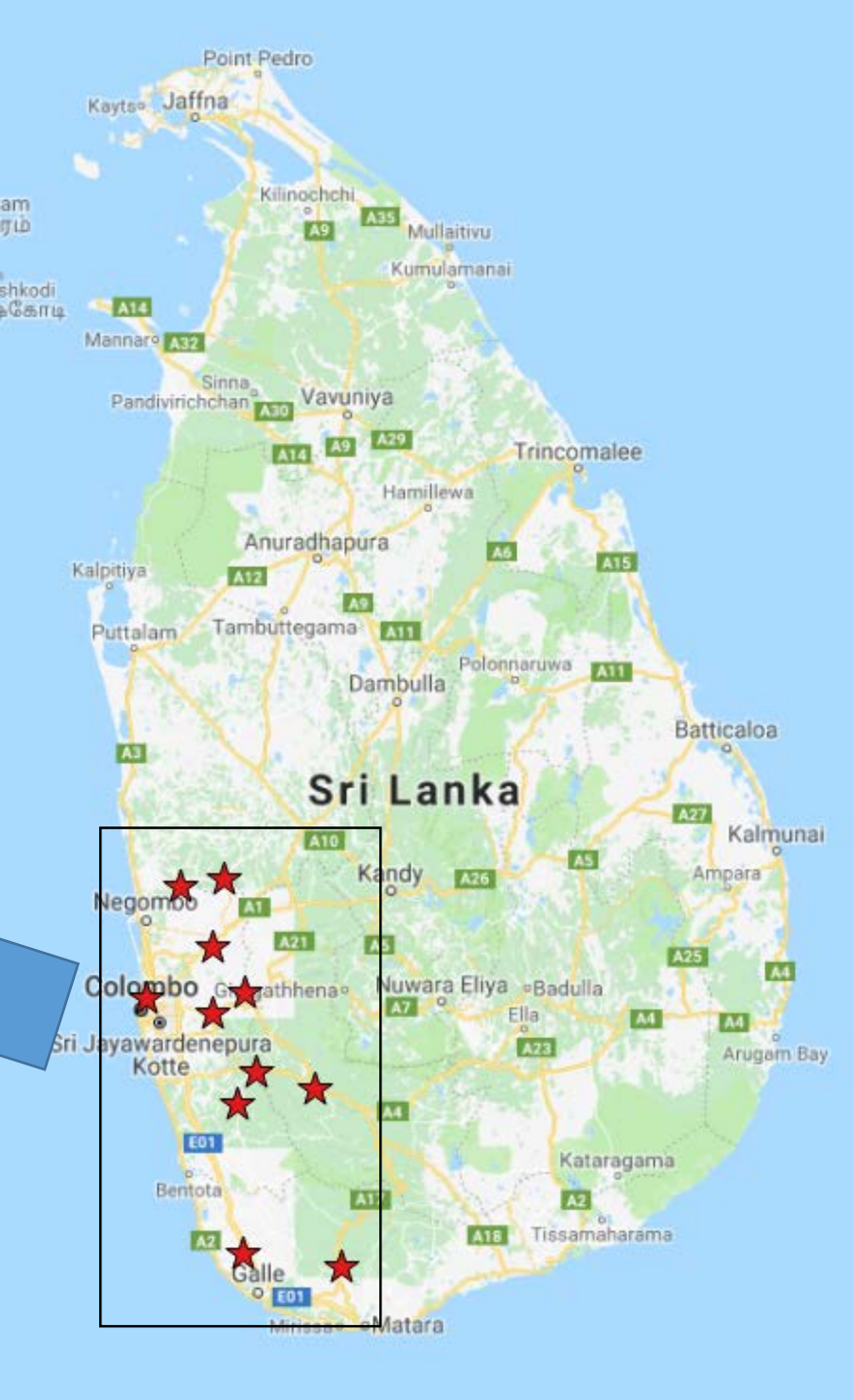
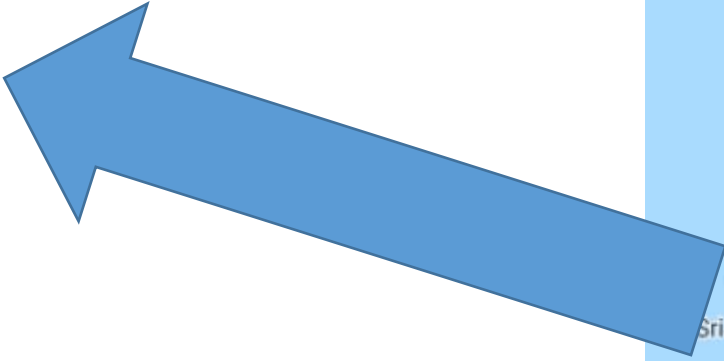
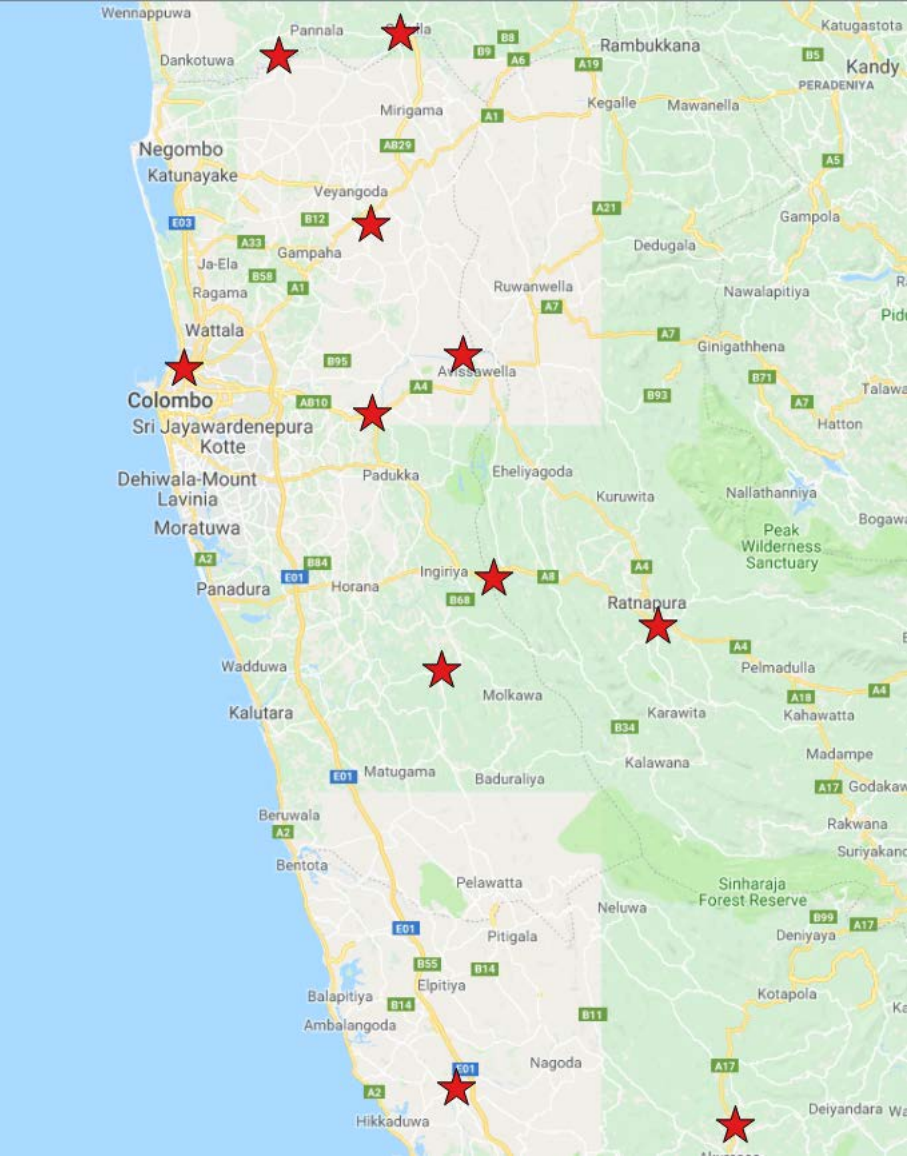


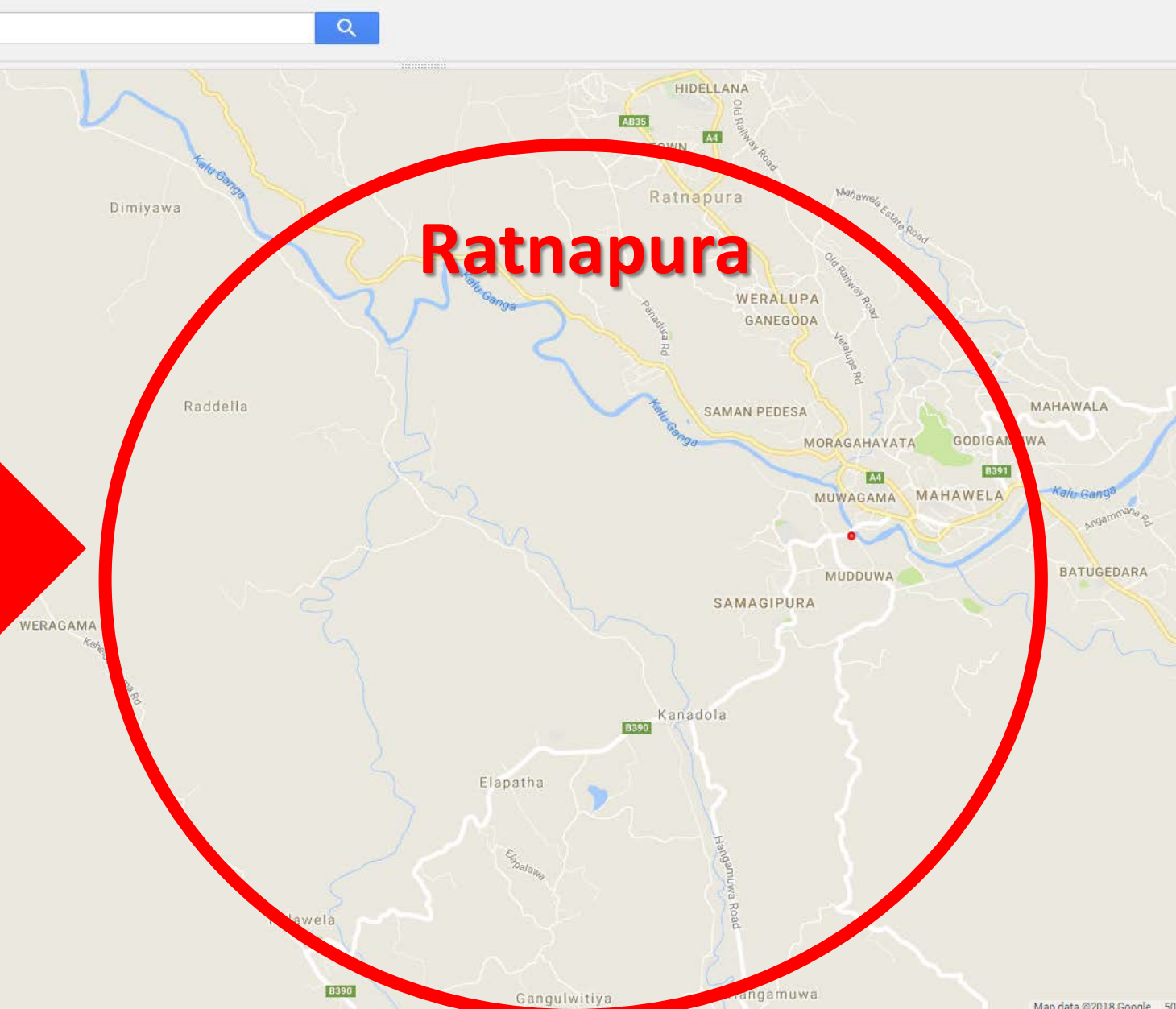
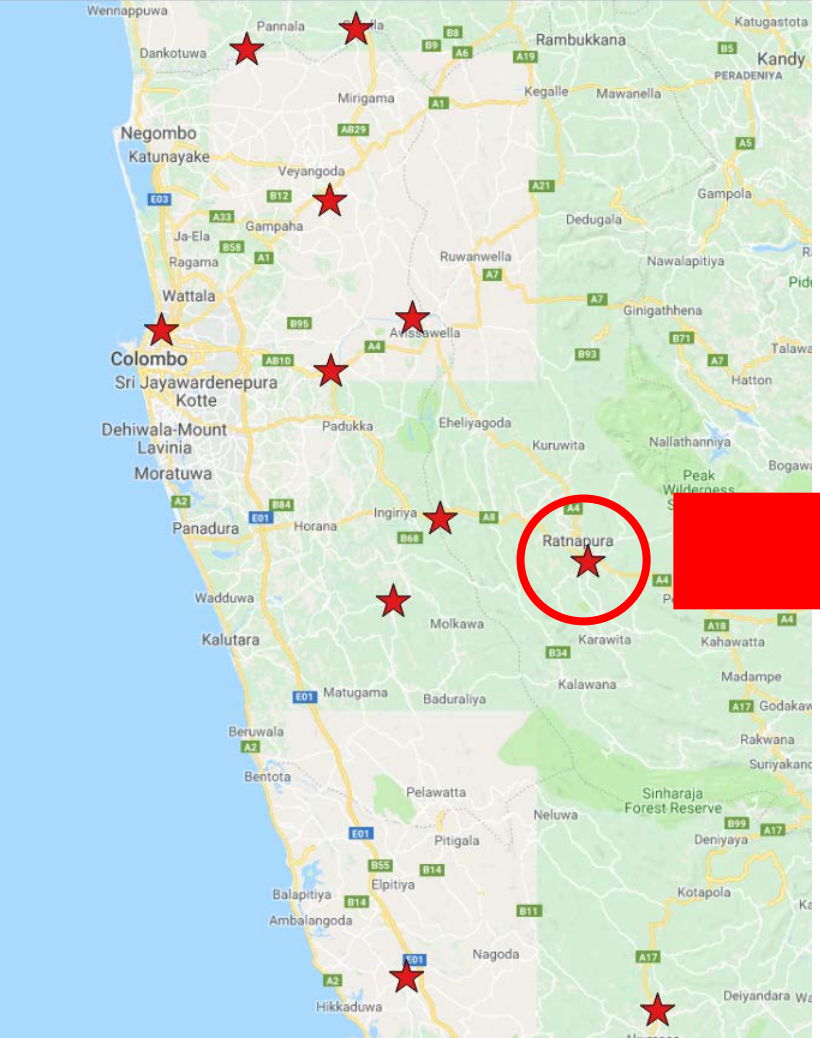
**Flood situation in Sri Lanka
by earth observation satellite (Sentinel2)**

Date : 23 May 2018

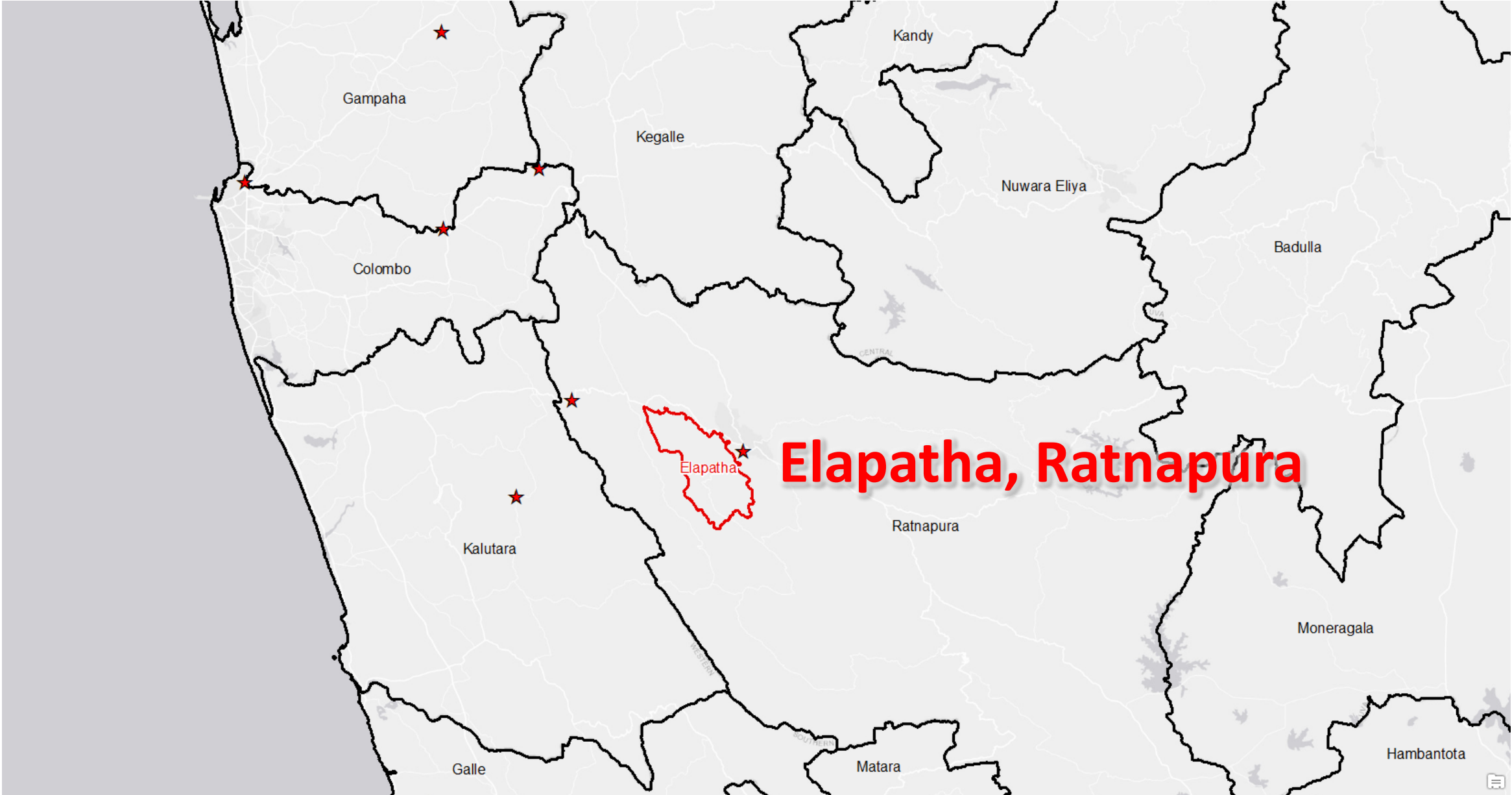
Location of the gauging stations where alert as flood



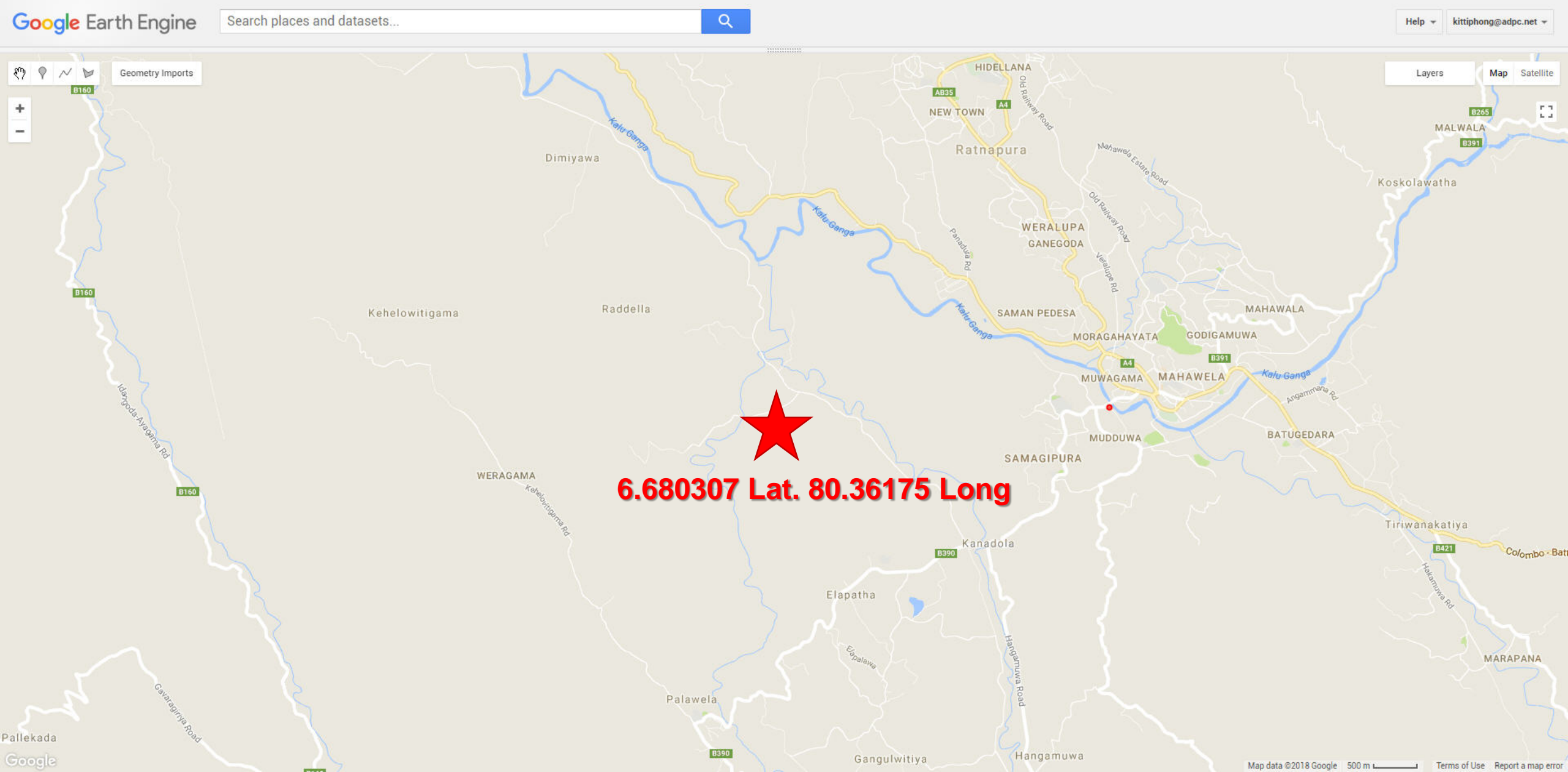
Zoom into one station that satellite can be observed



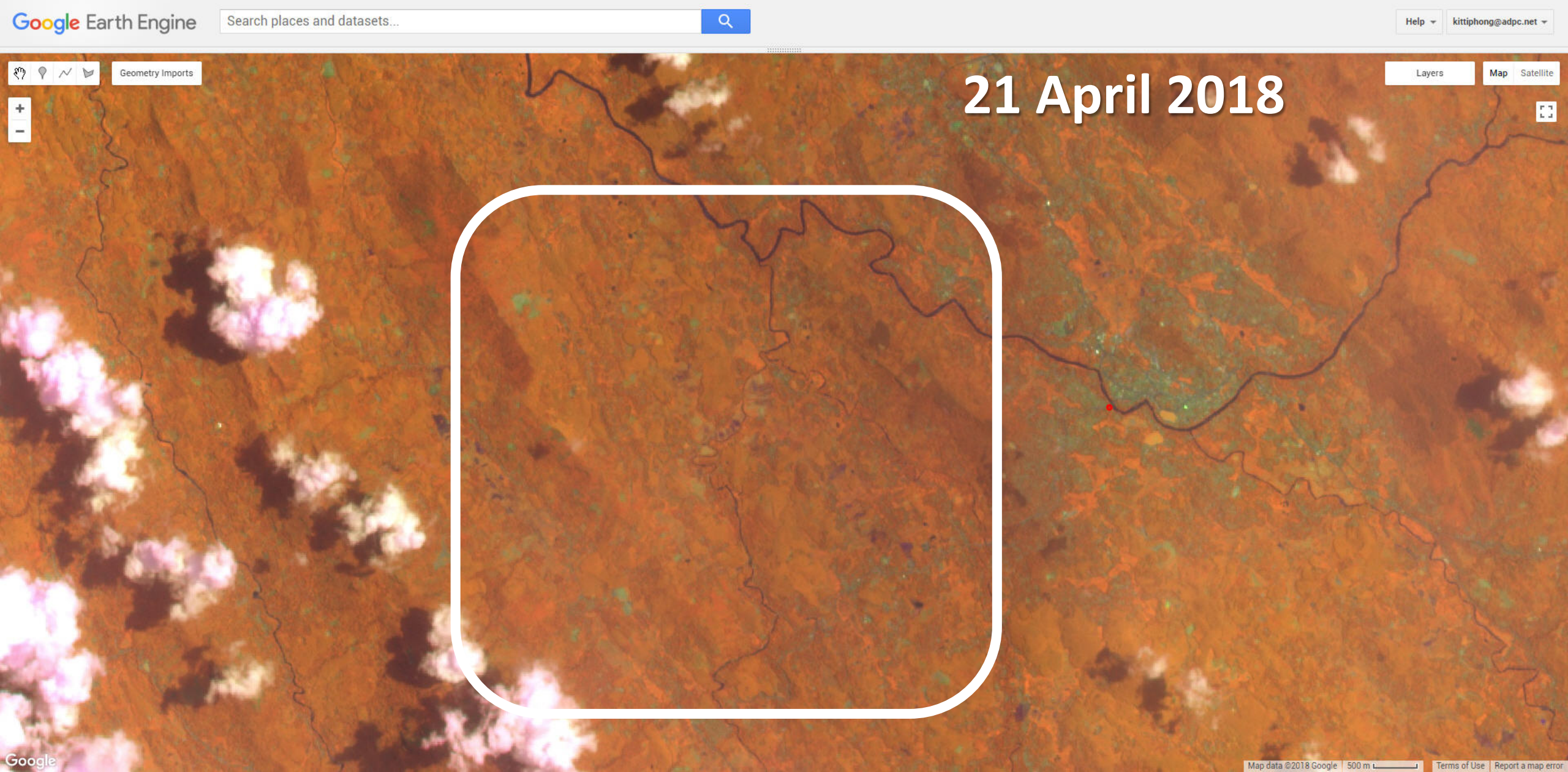
Zoom into one station that satellite can be observed



Zoom into one station that satellite can be observed



Sentinel 2 color composite (B8 B11 B4) Comparison before and after flood (21 April and 21 May 2018)

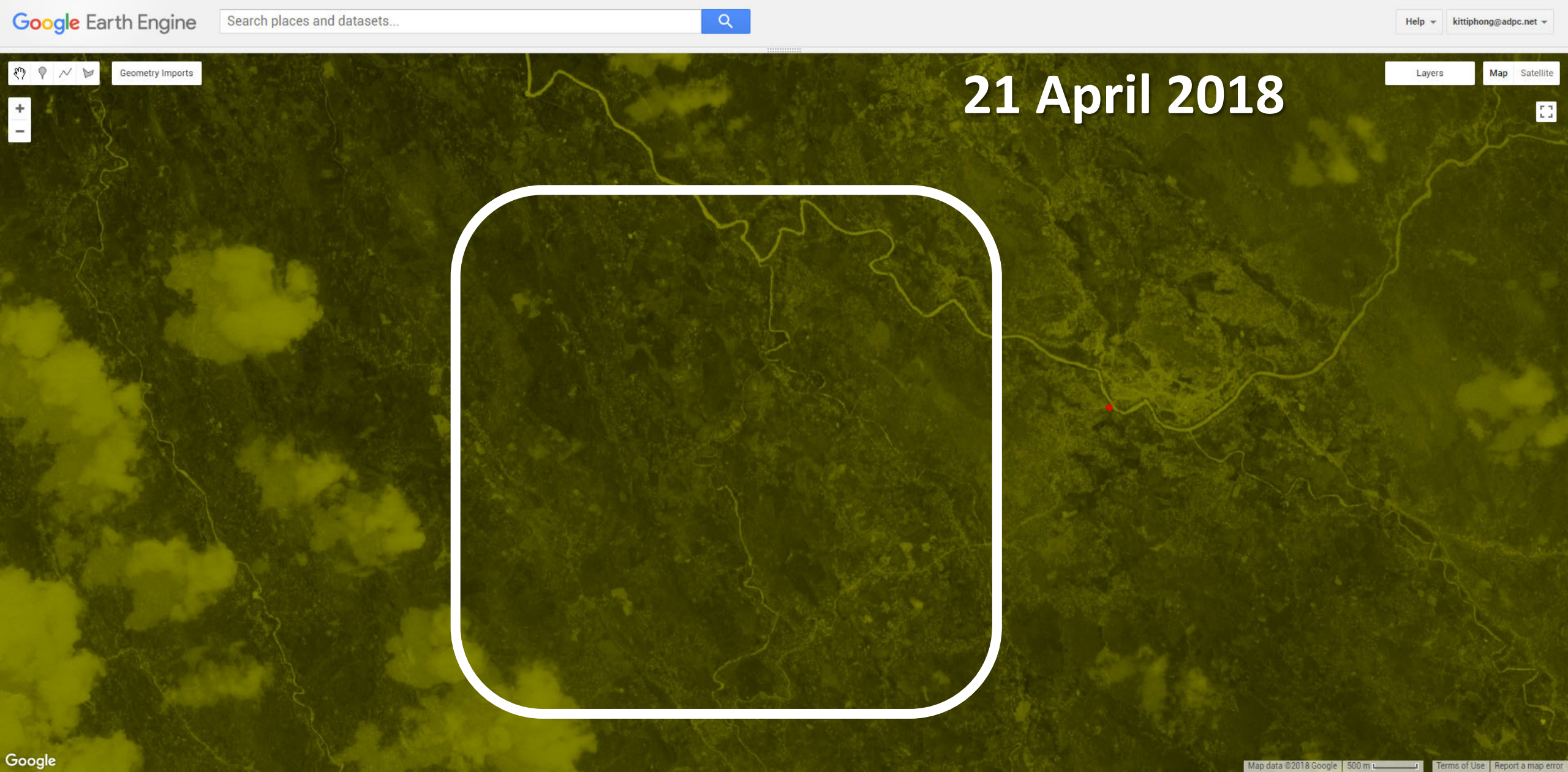


Sentinel 2 color composite (B8 B11 B4)
Comparison before and after flood (21 April and 21 May 2018)



Sentinel 2 NDWI

Comparison before and after flood (21 April and 21 May 2018)



Sentinel 2 NDWI

Comparison before and after flood (21 April and 21 May 2018)



Geometry Imports

21 Map 2018

Layers

Map

Satellite

