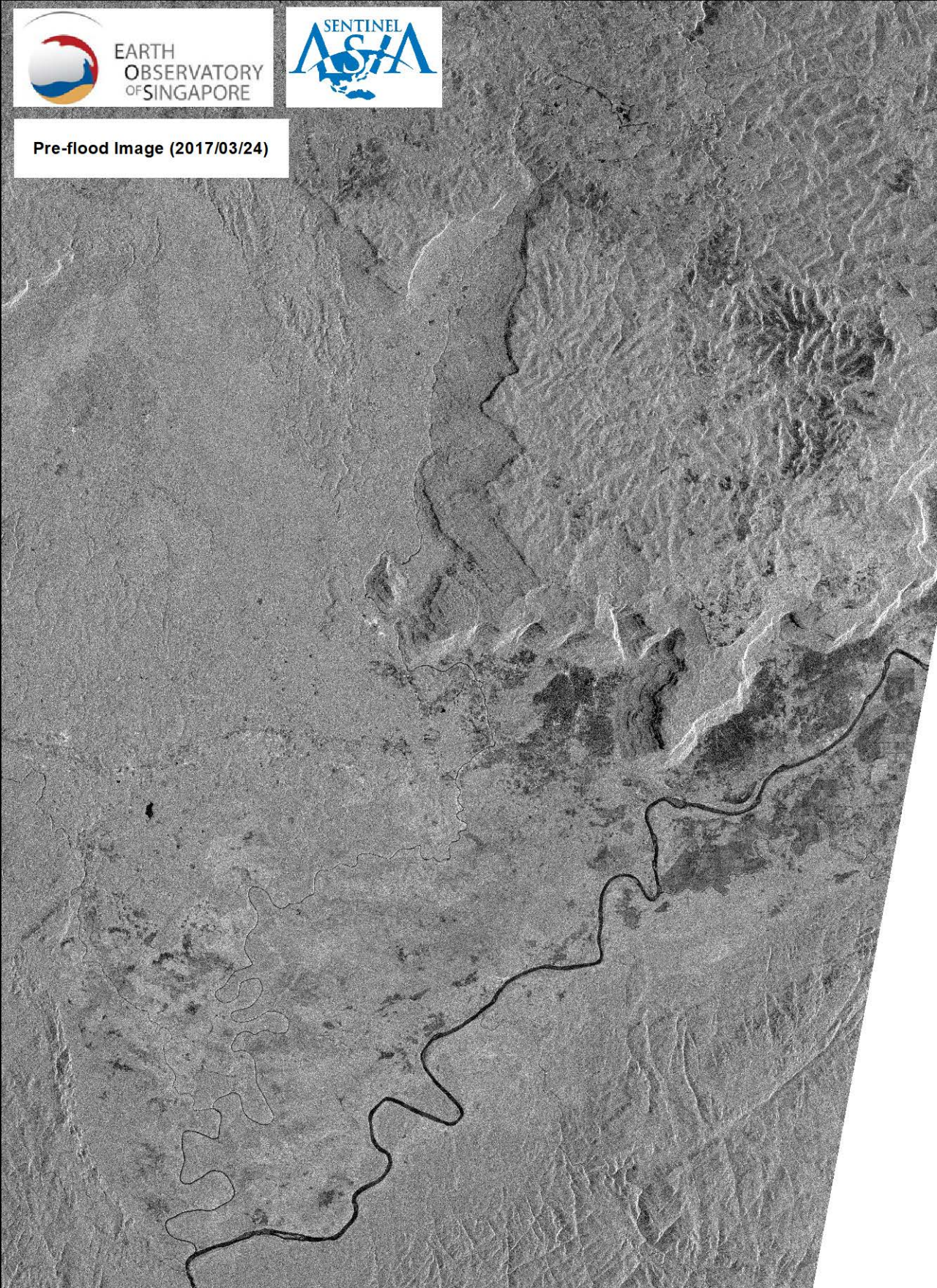




EARTH  
OBSERVATORY  
OF SINGAPORE



Pre-flood Image (2017/03/24)

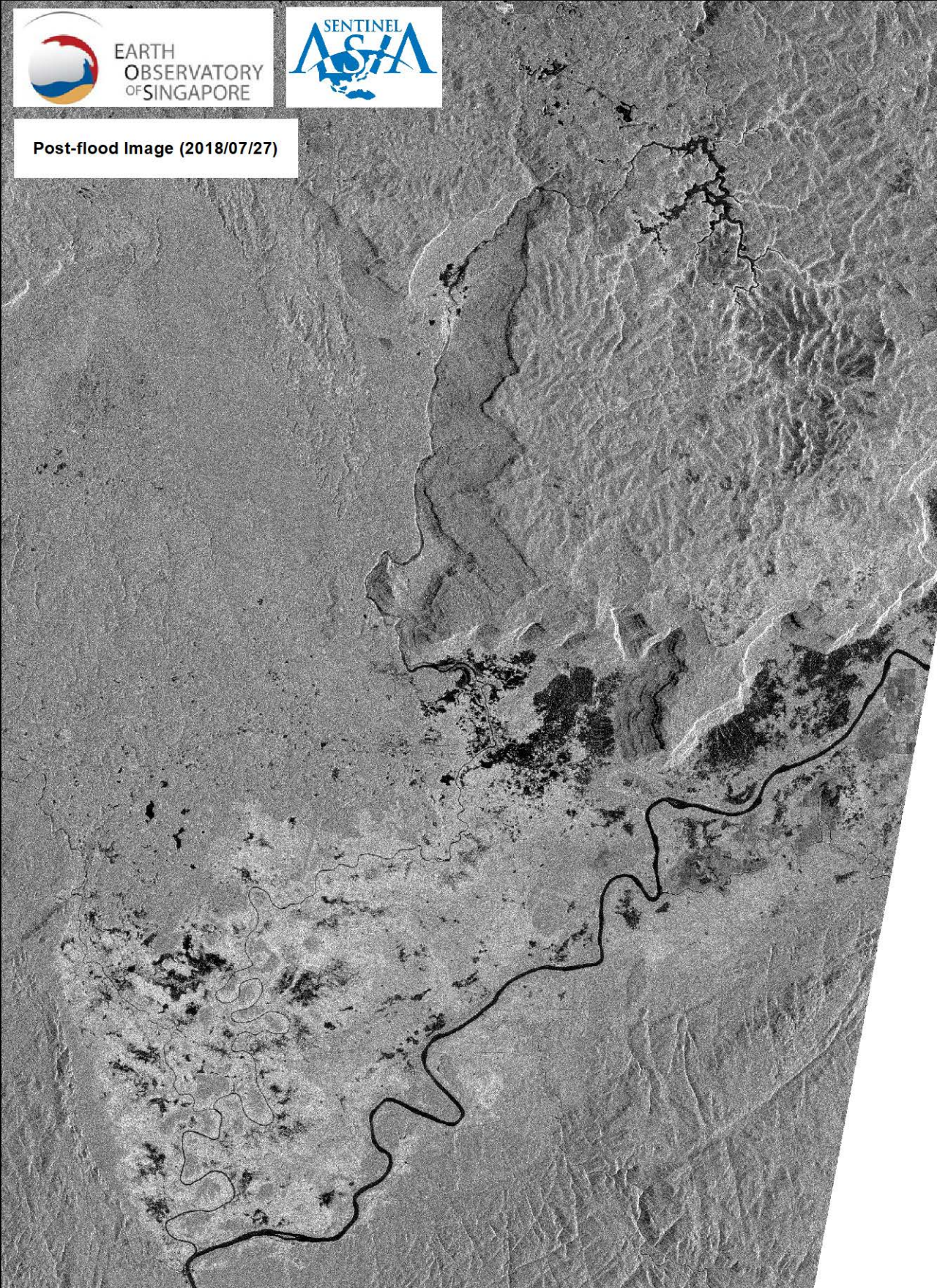




EARTH  
OBSERVATORY  
OF SINGAPORE



Post-flood Image (2018/07/27)





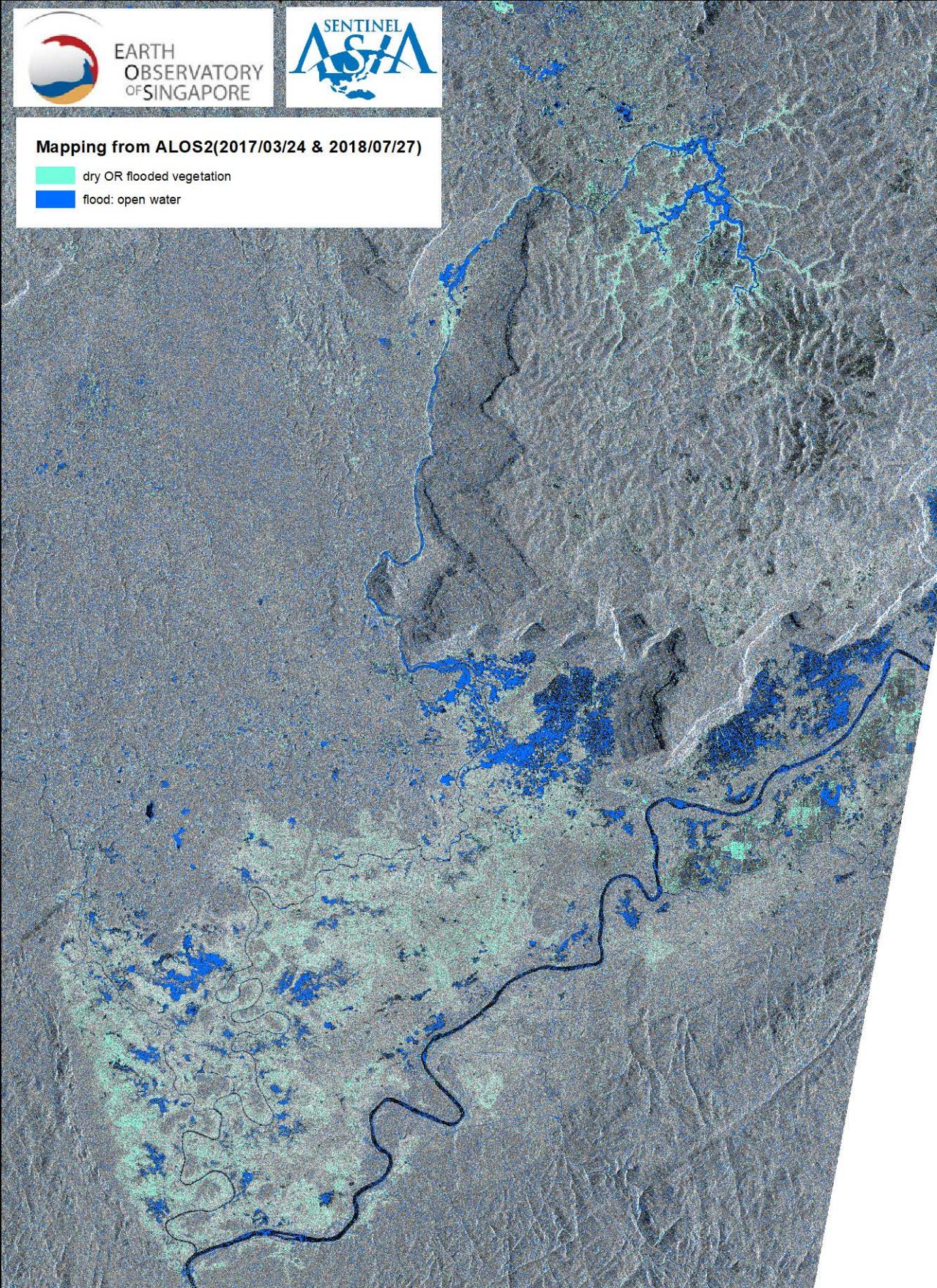


EARTH  
OBSERVATORY  
OF SINGAPORE



**Mapping from ALOS2(2017/03/24 & 2018/07/27)**

-  dry OR flooded vegetation
-  flood: open water

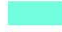





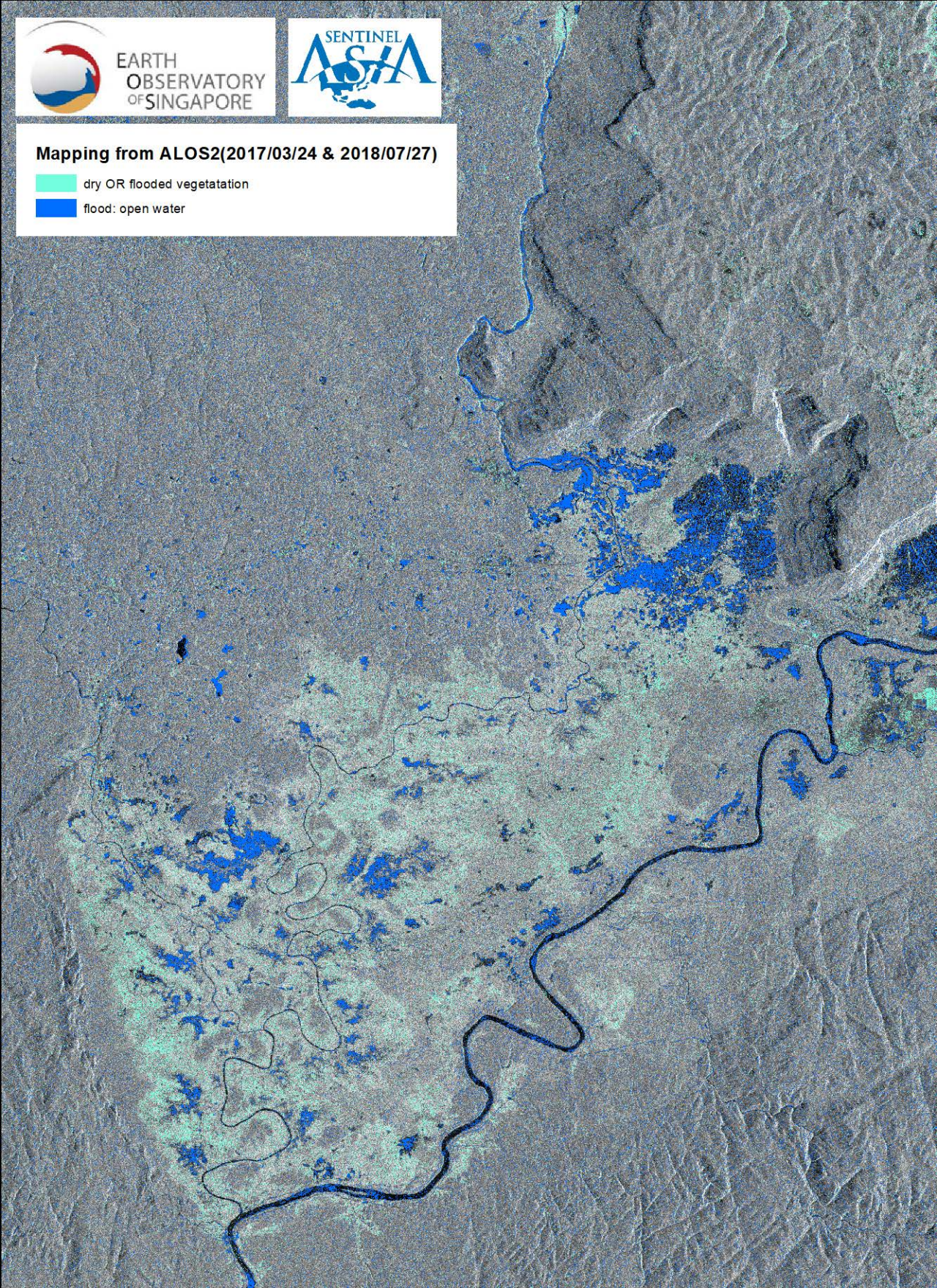
EARTH  
OBSERVATORY  
OF SINGAPORE



**Mapping from ALOS2(2017/03/24 & 2018/07/27)**

 dry OR flooded vegetation

 flood: open water

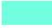





EARTH  
OBSERVATORY  
OF SINGAPORE



**Mapping from ALOS2(2017/03/24 & 2018/07/27)**

-  dry OR flooded vegetation
-  flood: open water

