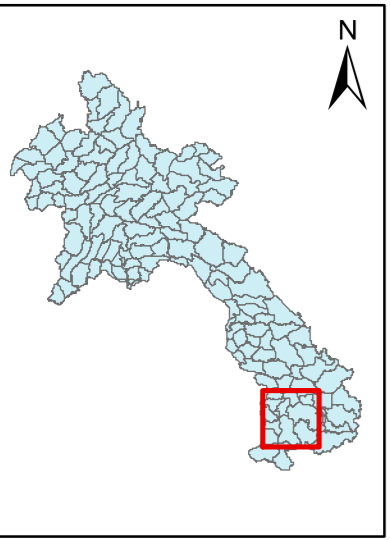


# Mapping water extent of break dam in Attapau province (Lao PDR) using ALOS 2 PALSAR 2 Satellite Data (25 & 27 July 2018)



**Laos dam collapse**  
 Hundreds are missing and Twenty-six people have been confirmed dead, KPL, the state news agency reported on Thursday morning. Officially, nearly 7,000 people have been rendered homeless after flash flooding inundated a half dozen villages in southernmost Attapeu province near the borders with Cambodia and Vietnam. Survivors were left clinging to trees, or stranded on a handful of rooftops peaking above the floodline.  
 Speaking on Wednesday afternoon, the prime minister, Thongloun Sisoulith, confirmed that 131 people were still missing and that there had been 26 reported fatalities so far.  
 The structure that collapsed is reportedly one of three "earth-filled" auxiliary dams supporting the hydropower project, a system of dams, reservoirs and channels along Mekong River tributaries.

<http://time.com/5347992/laos-dam-collapse-missing-rescue-latest/> : Date of access 26/7/2018  
<https://www.theguardian.com/world/2018/jul/25/laos-dam-collapse-3000-need-rescue-death-toll-rises> : Date of access 26/7/2018

## Legend

- Cities/Town
- Road
- River
- Reservoir (27 July 2018)
- Reservoir (25 July 2018)

## Map Prepared by



The analysis excluded permanent water bodies including reservoir, tanks and ponds and this reflects only the inundation extent. Please note the surface water extent mapped has not yet been validated in the field.

The depiction and use of boundaries, geographic names and related data shown in these maps are based on the sources they have been drawn from and quoted. These are neither error-free nor do they imply official endorsement or the position of

## Data Provider



27 July 2018 | FL-2018-0008-LAO |  
 Version 1

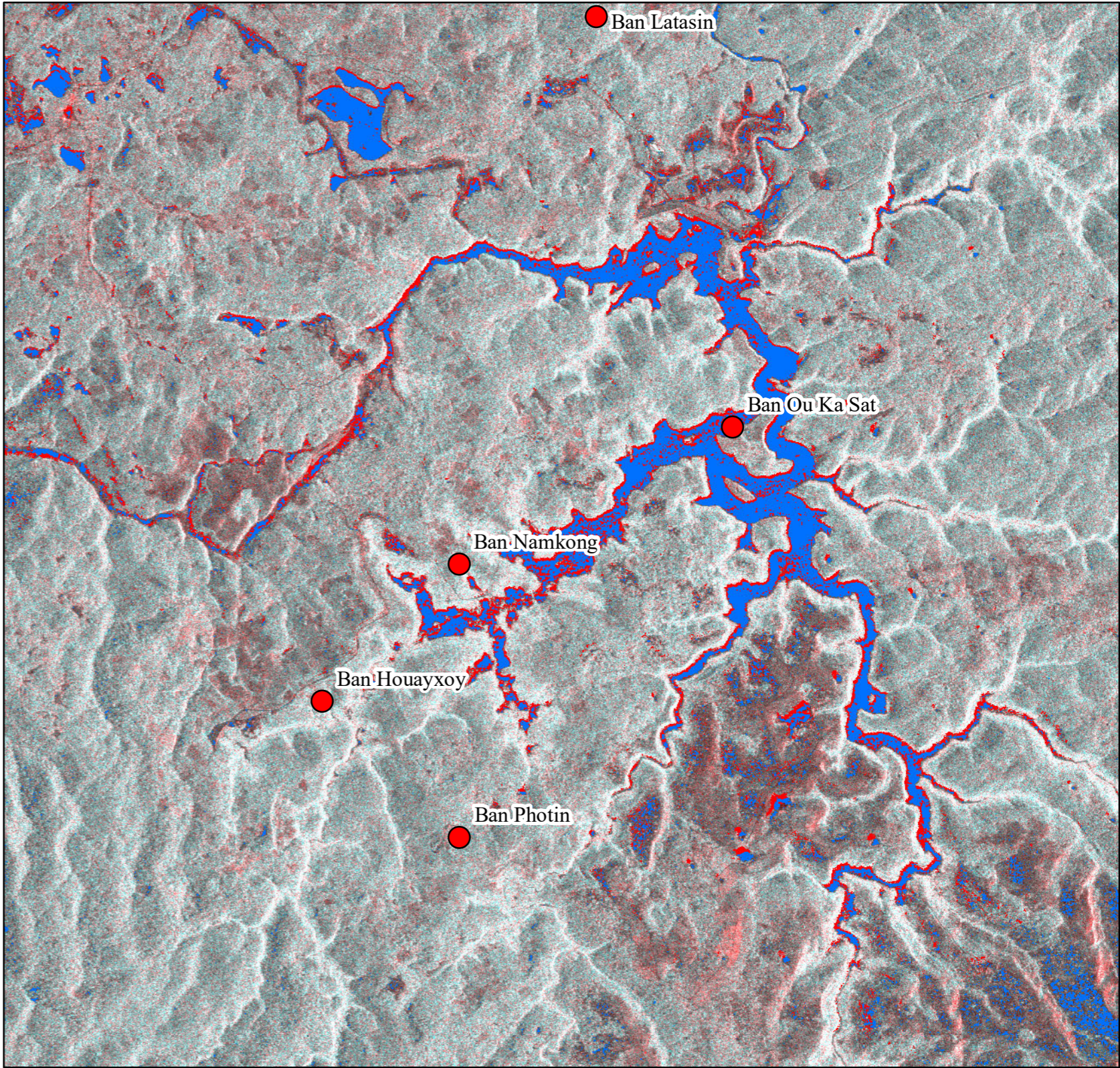
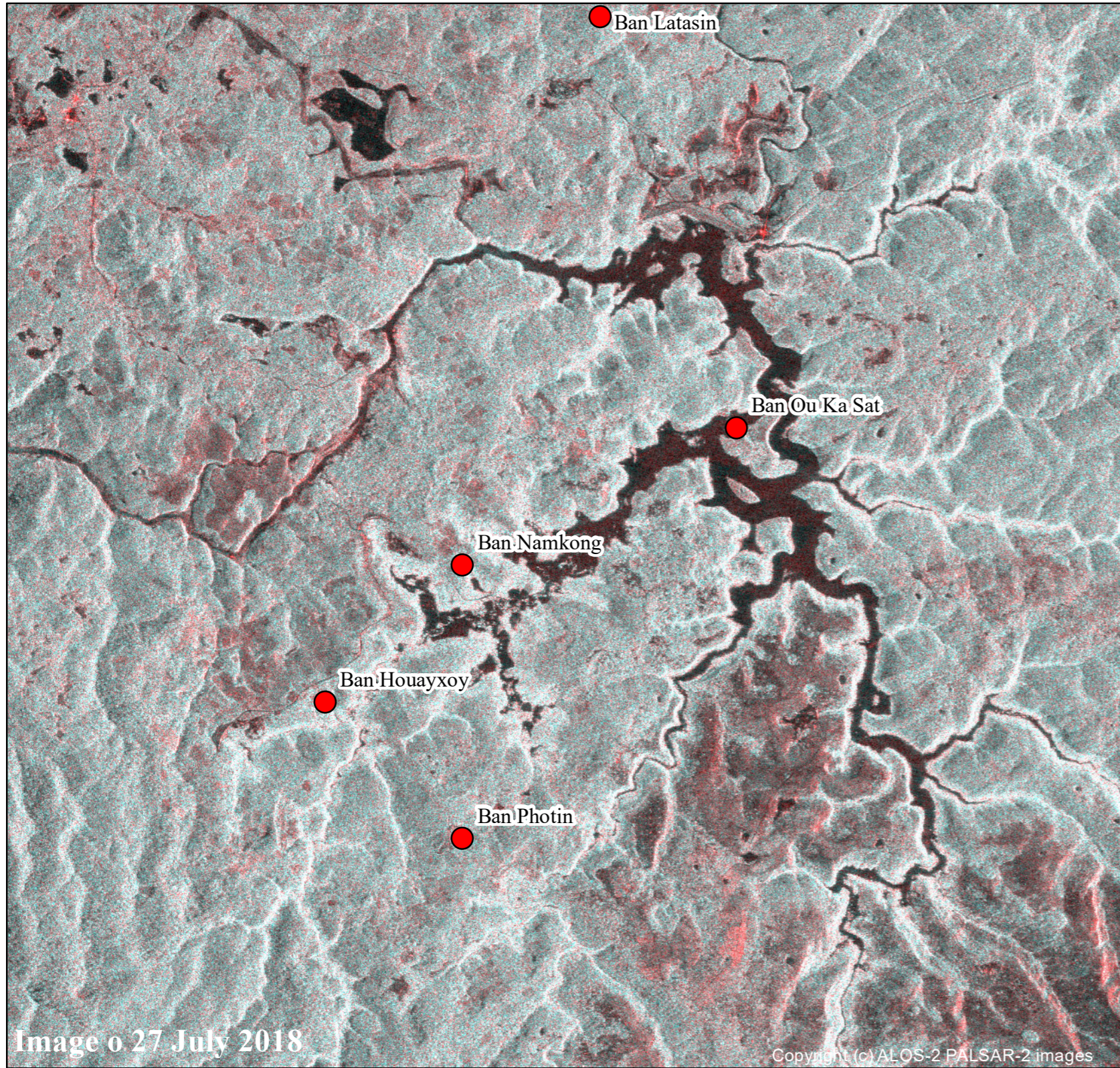
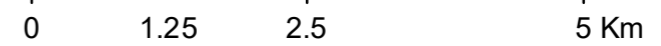


Image o 27 July 2018

Copyright (c) ALOS-2 PALSAR-2 images