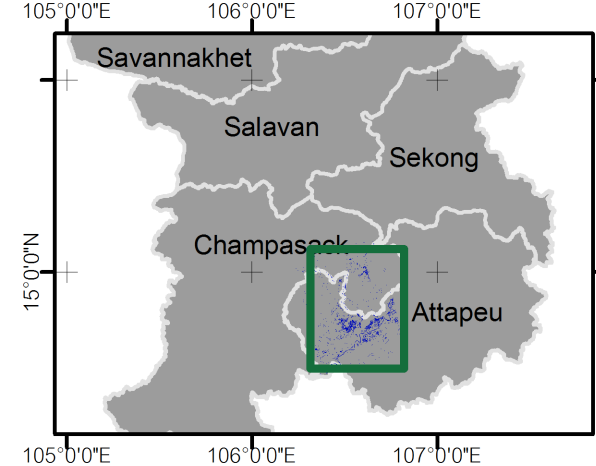
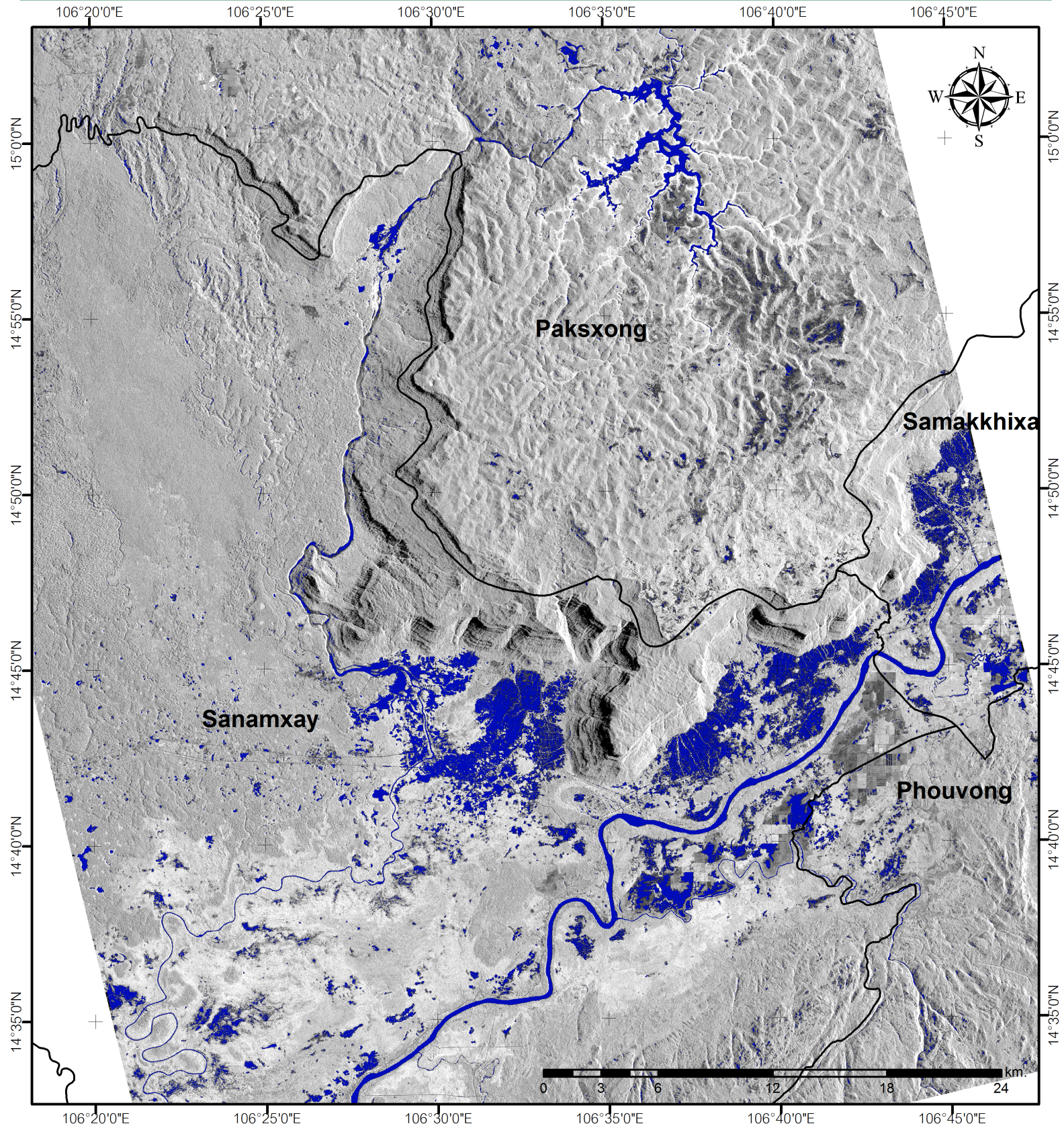


# Possible flood areas in southern part of Laos



## Map Information



Possible flood area by ALOS-2 image on 25 July 2018  
(including waterbody, wetland and radar shadow)

### Data Source:

Image: ALOS-2/PALSAR-2

Image date: 2018-07-25 (Ascending orbit - left side observation)

Copyright © Japan Aerospace Exploration Agency, all rights reserved.

Admin Boundaries from National Geographic Department (NGD)

Map produced by Yamaguchi University

