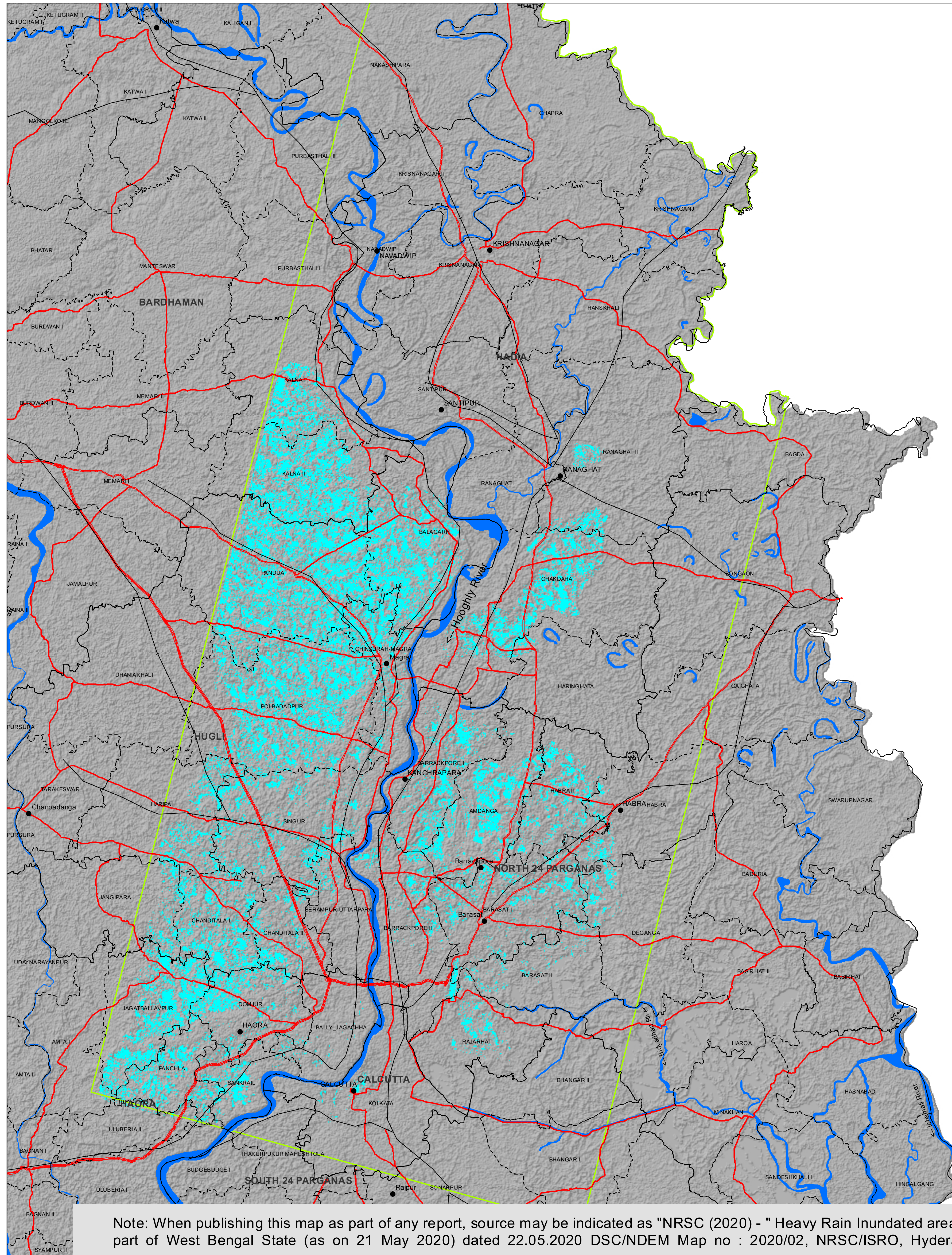


Heavy Rain Inundated areas in Part of West Bengal State

Based on the analysis of ALOS-2 PALSAR image of 21-May-2020 (1130 Hrs IST)



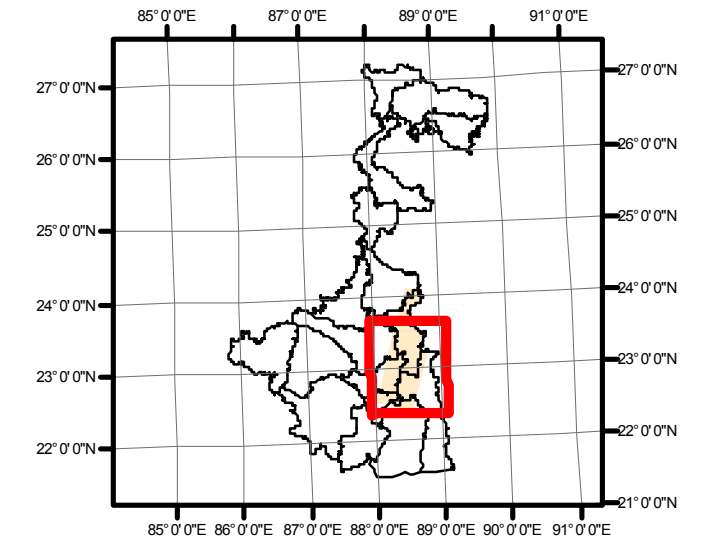
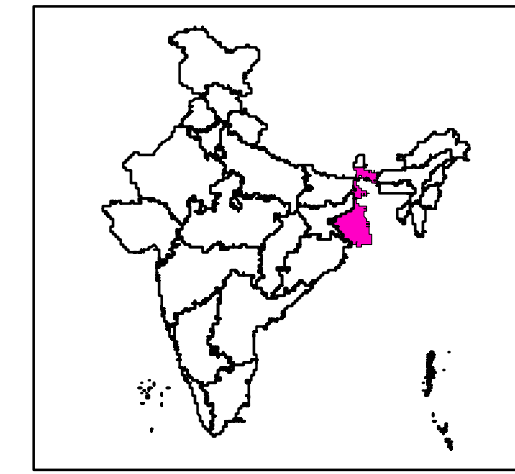
Note: When publishing this map as part of any report, source may be indicated as "NRSC (2020) - " Heavy Rain Inundated areas in part of West Bengal State (as on 21 May 2020) dated 22.05.2020 DSC/NDEM Map no : 2020/02, NRSC/ISRO, Hyderabad

For official use

DISASTER EVENT ID: 01-CY-2020-WB/01
MAP ID: 2020/02

Date of Issue : 22.05.2020

Location Map



About the Event

Cyclone AMPHAN made the landfall between Digha in West Bengal and Hatia Islands of Bangladesh. Under the influence of the Cyclone, heavy incessant rains and wind induced damage were reported in various parts of West Bengal in the fourth week of May, 2020 (Source: News Media, CWC).

(Source: News Media)

Satellite Observations

This map highlights the inundation due to rains in SIX districts of West Bengal as on 21-May-2020 (1130 Hrs IST).

Satellite data used

Pre Cyclone:	Post Cyclone:
Satellite: Resourcesat-2	Satellite: ALOS-2
Sensor: AWiFS	Sensor: PALSAR
Date of Pass 01-Mar-2020	Date of Pass 21-May-2020 (1130 Hrs)

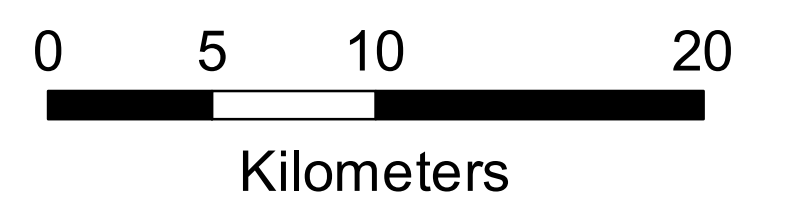
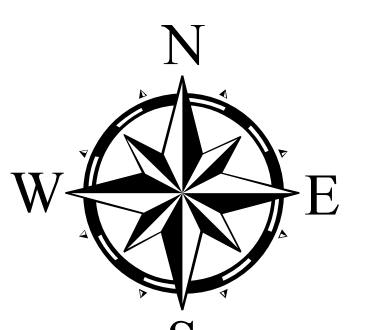
Other data used

NRC Landuse/Landcover Data

Background Image : Shaded Relief

Legend

- | | |
|---------------------|---------------------------|
| ● Settlements | Major Rivers/Water Bodies |
| □ District Boundary | Area covered by satellite |
| □ Block Boundary | Inundation |
| — State Boundary | |
| — Railways | |
| — National Highway | |
| — State Highway | |



This product is prepared on rapid mapping mode for immediate use and sharing amongst official agencies. This provides preliminary results.

Inundation may include rain induced inundation / rain water in low lying areas.

All geographic information has limitations due to the scale, resolution, date and interpretation of the original source materials.

No ground verification is done.

This product is prepared using ALOS-2 PALSAR satellite image received under Sentinel Asia.



ALOS PALSAR -2 satellite image "© JAXA (2020), distribution JAXA, all rights reserved".

DSC / NDEM
National Remote Sensing Centre, ISRO
Dept. of Space, Govt. of India
Hyderabad- 500 037
E-Mail: flood@nrsc.gov.in
www.nrsc.gov.in



nrsc