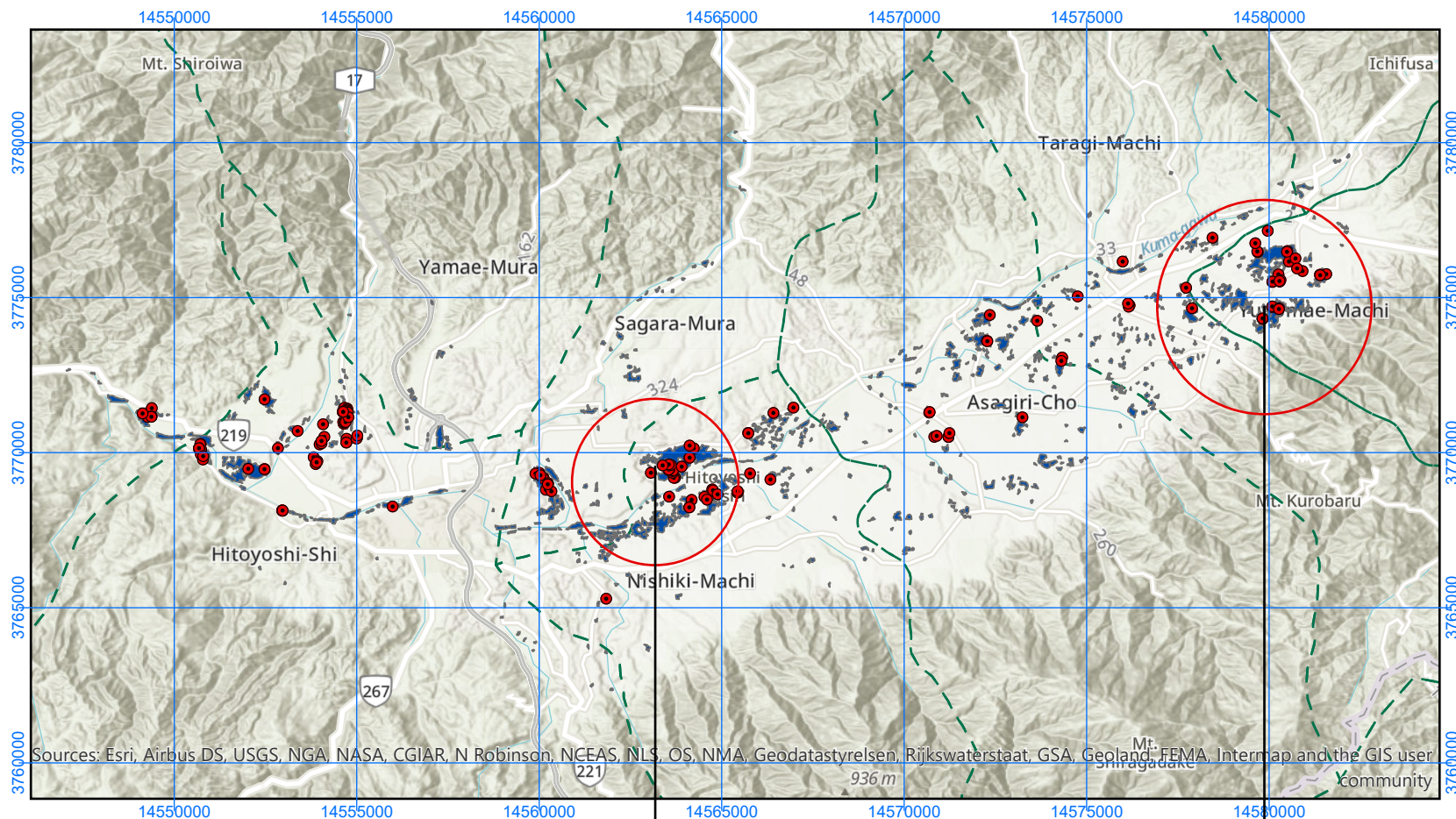


Building in Risk due to Flood Water in Kumamoto-Japan

As observed by SENTINEL-1 image on 4 July 2020



Map Information

Coordinate System: GCS WGS 1984

Datum: D WGS 1984

Unit: Degree

0 2.3 4.6 9.2 Kms

Legend

- Building At Risk
- Administrative Bdry
- Flooded Areas

Data Source

Satellite Images:

Pre- disaster: SENTINEL-1 Interferometric Wide Swath Level 1 Product, 2020-05-05T21:17:06 and 2020-05-17T21:17:35

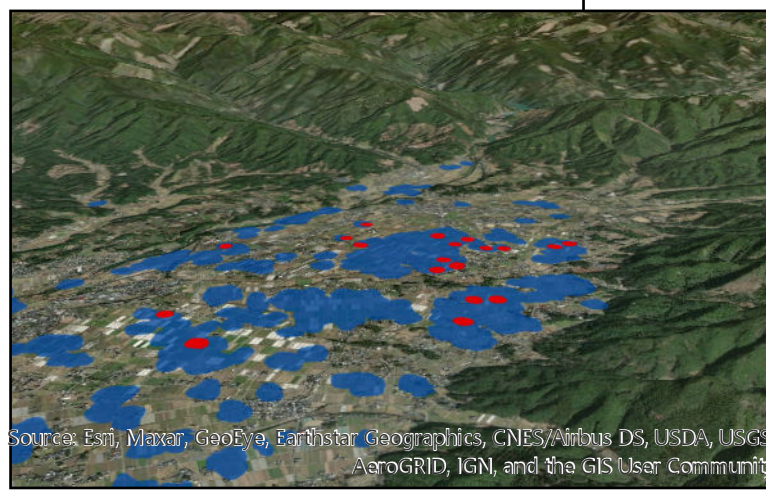
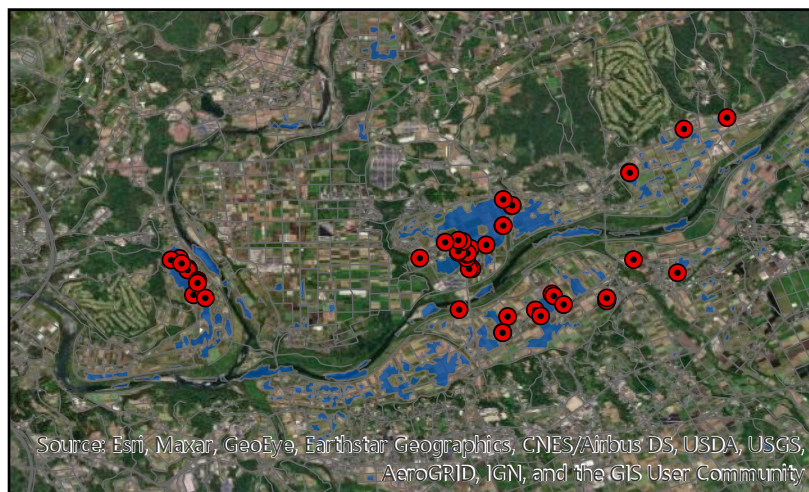
Post-disaster: SENTINEL-1 Interferometric Wide Swath Level 1 Product, 2020-07-04T23:40:07

Residential Area and Roads @ OSM (2020)
Administrative boundary @ DIVA-GIS

Description

The blue areas show the flooded locations due to heavy rain in Kumamoto Japan on 4 July 2020. The accuracy of this product is not validated.

Data Provider:



Source: Esri, Maxar, GeoEye, Earthstar Geographics, CNES/Airbus DS, USDA, USGS, AeroGRID, IGN, and the GIS User Community

Source: Esri, Maxar, GeoEye, Earthstar Geographics, CNES/Airbus DS, USDA, USGS, AeroGRID, IGN, and the GIS User Community