



# FORMOSAT-5 DIMAP Product Data-sheet

 <b>NSPO</b>	<b>Product Type</b>	FORMOSAT-5 Product Level4 MS	 <b>NAR Labs</b> <small>National Applied Research Laboratories</small> National Space Organization
	<b>Product Name</b>	FS5_G001_MS_L4UTM_20201104_093624	
	<b>Format</b>	DIMAP	
	<b>Raster</b>	GeoTIFF	



Product Parameters	
Product Name	FS5_G001_MS_L4UTM_20201104_093624
Production Date-Time in UTC	2020-11-05 04:39:13
Acquisition Data-Time in UTC	2020-11-04 09:36:24
Spacecraft Name	FORMOSAT-5
Processing Level	04
Geometric Processing Level	ORTHO
Radiometric Processing Level	SYSTEM
Spectrum Type	MS
Producer Identification	MSGPS
Producer Link	<a href="http://www.nspo.narl.org.tw">http://www.nspo.narl.org.tw</a>

Image Dimension	
Number of Spectral Bands	4
Number of Lines	7273
Number of Pixels per Line	8927
Pixel Spacing	4.00 (meter)

Band Information				
Band Identification	B1 (Bule)	B2 (Green)	B3 (Red)	B4 (NIR)
Gain Setting	2	2	2	2
Absolute Gain	0.040742	0.035910	0.043739	0.035388
Absolute Offset	0.000000	0.000000	0.000000	0.000000

Coordinate System	
Geocoding Table Identifictaion	EPSG 5.2
Horizontal Coordinate System Type	PROJECTED
Horizontal Coordinate System Code	EPSG: 32635
Horizontal Coordinate System Name	WGS 84/UTM35N

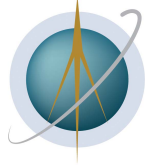
# FORMOSAT-5 DIMAP Product Data-sheet

 <b>NSPO</b>	<b>Product Type</b>	FORMOSAT-5 Product Level4 MS	 <b>NAR Labs</b> <small>National Applied Research Laboratories</small> <b>National Space Organization</b>
	<b>Product Name</b>	FS5_G001_MS_L4UTM_20201104_093624	
	<b>Format</b>	DIMAP	
	<b>Raster</b>	GeoTIFF	

Vertex Location						
	Line	Sample	Latitude	Longitude	X	Y
UL	0.50	0.50	N38.416	E27.168	514678	4251934
UR	0.50	8926.50	N38.414	E27.577	550382	4251934
LR	7272.50	8926.50	N38.152	E27.575	550382	4222846
LL	7272.50	0.50	N38.153	E27.168	514678	4222846
Center	3636.00	4463.00	N38.284	E27.372	532530	4237390

Incidences and Orientation (in units of degree)	
Satellite Elevation	71.113718
Satellite Azimuth	284.600964
LOS Along Track Angle	0.898315
LOS Cross Track Angle	16.899690
Orientation	195.310000
Sun Elevation	35.880000
Sun Azimuth	174.380000

# FORMOSAT-5 DIMAP Product Data-sheet



**NSPO**

**Product Type** FORMOSAT-5 Product Level4 MS

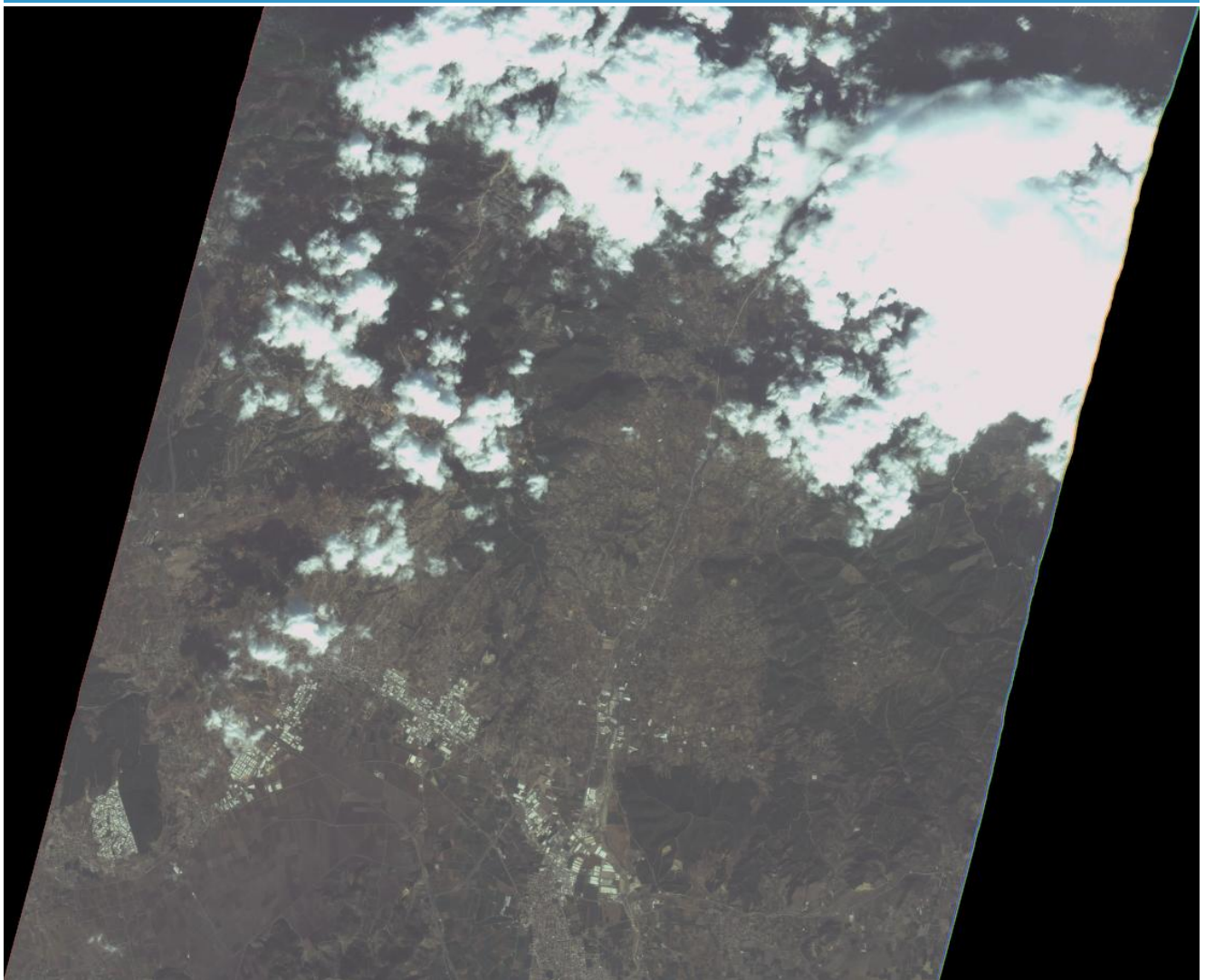
**Product Name** FS5\_G001\_MS\_L4UTM\_20201104\_093624

**Format** DIMAP

**Raster** GeoTIFF

**NAR Labs**  
National Applied Research Laboratories  
National Space Organization

FS5\_G001\_MS\_L4UTM\_20201104\_093624\_qis.jpg



# FORMOSAT-5 DIMAP Product Data-sheet



NSPO

**Product Type** FORMOSAT-5 Product Level4 MS  
**Product Name** FS5\_G001\_MS\_L4UTM\_20201104\_093624  
**Format** DIMAP  
**Raster** GeoTIFF

**NAR Labs**  
National Applied Research Laboratories  
National Space Organization

## Histogram of each bands

