



# FORMOSAT-5 DIMAP Product Data-sheet

 <b>NSPO</b>	<b>Product Type</b>	FORMOSAT-5 Product Level4 PAN	 <b>NAR Labs</b> <small>National Applied Research Laboratories</small> <b>National Space Organization</b>
	<b>Product Name</b>	FS5_G001_PAN_L4UTM_20201112_093628	
	<b>Format</b>	DIMAP	
	<b>Raster</b>	GeoTIFF	



Product Parameters	
Product Name	FS5_G001_PAN_L4UTM_20201112_093628
Production Date-Time in UTC	2020-11-13 04:08:14
Acquisition Data-Time in UTC	2020-11-12 09:36:28
Spacecraft Name	FORMOSAT-5
Processing Level	04
Geometric Processing Level	ORTHO
Radiometric Processing Level	SYSTEM
Spectrum Type	PAN
Producer Identification	MSGPS
Producer Link	<a href="http://www.nspo.narl.org.tw">http://www.nspo.narl.org.tw</a>

Image Dimension	
Number of Spectral Bands	1
Number of Lines	14556
Number of Pixels per Line	17816
Pixel Spacing	2.00 (meter)

Band Information	
Band Identification	B0 (PAN)
Gain Setting	2
Absolute Gain	0.039112
Absolute Offset	0.000000

Coordinate System	
Geocoding Table Identifictaion	EPSG 5.2
Horizontal Coordinate System Type	PROJECTED
Horizontal Coordinate System Code	EPSG: 32635
Horizontal Coordinate System Name	WGS 84/UTM35N

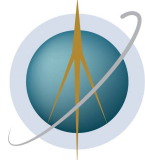
# FORMOSAT-5 DIMAP Product Data-sheet

 <b>NSPO</b>	<b>Product Type</b>	FORMOSAT-5 Product Level4 PAN	 <b>NAR Labs</b> <small>National Applied Research Laboratories</small> <b>National Space Organization</b>
	<b>Product Name</b>	FS5_G001_PAN_L4UTM_20201112_093628	
	<b>Format</b>	DIMAP	
	<b>Raster</b>	GeoTIFF	

Vertex Location						
	Line	Sample	Latitude	Longitude	X	Y
UL	0.50	0.50	N38.426	E27.172	515035	4253151
UR	0.50	17815.50	N38.425	E27.580	550665	4253151
LR	14555.50	17815.50	N38.163	E27.578	550665	4224041
LL	14555.50	0.50	N38.164	E27.172	515035	4224041
Center	7278.00	8908.00	N38.295	E27.376	532851	4238595

Incidences and Orientation (in units of degree)	
Satellite Elevation	70.890796
Satellite Azimuth	284.927075
LOS Along Track Angle	1.002969
LOS Cross Track Angle	17.101127
Orientation	195.270000
Sun Elevation	33.580000
Sun Azimuth	174.460000

# FORMOSAT-5 DIMAP Product Data-sheet



NSPO

**Product Type** FORMOSAT-5 Product Level4 PAN

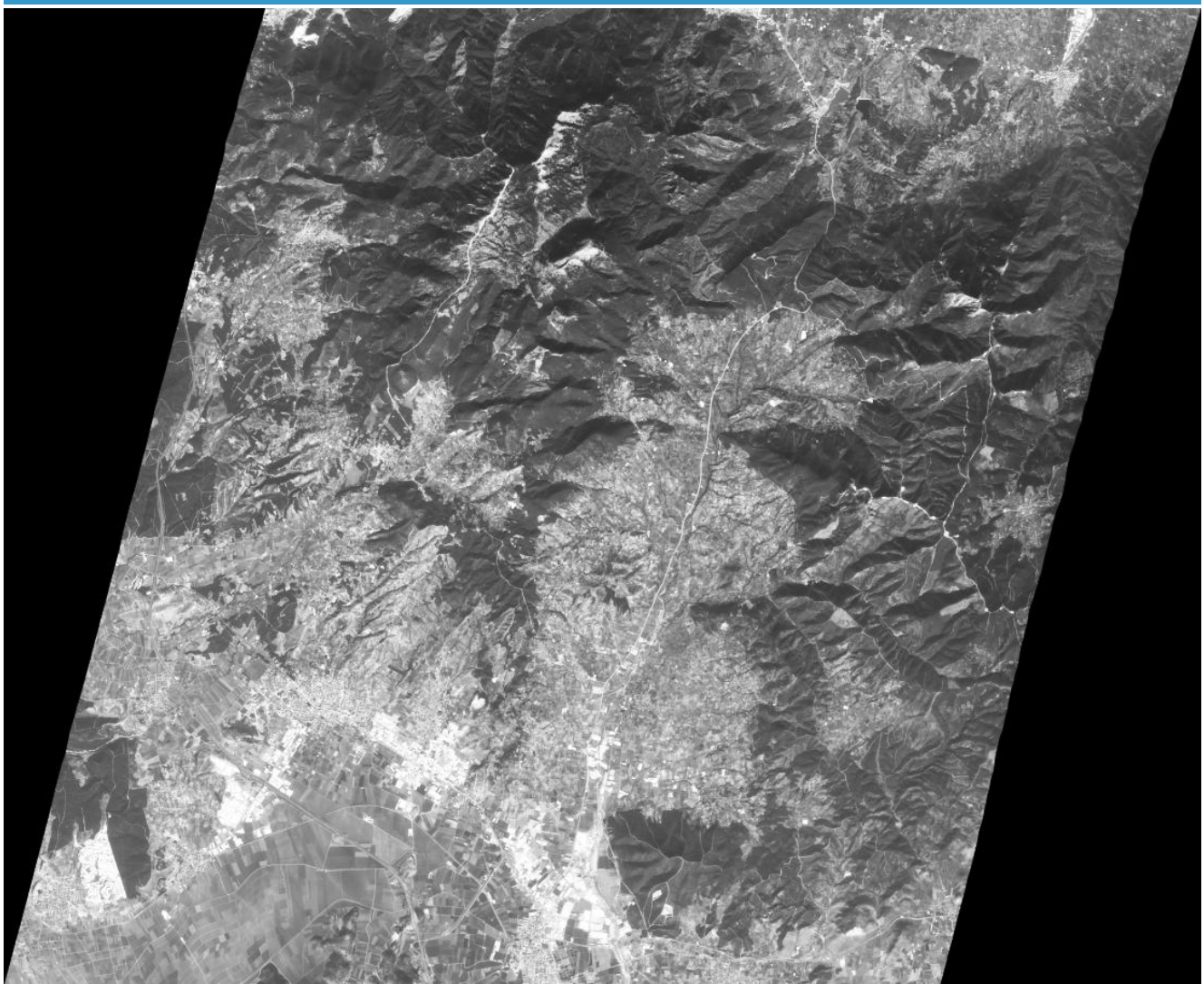
**Product Name** FS5\_G001\_PAN\_L4UTM\_20201112\_093628

**Format** DIMAP



**Raster** GeoTIFF

**NAR Labs**  
National Applied Research Laboratories  
National Space Organization

FS5\_G001\_PAN\_L4UTM\_20201112\_093628\_q1s.jpg



# FORMOSAT-5 DIMAP Product Data-sheet

 <b>NSPO</b>	<b>Product Type</b>	FORMOSAT-5 Product Level4 PAN
	<b>Product Name</b>	FS5_G001_PAN_L4UTM_20201112_093628
	<b>Format</b>	DIMAP
	<b>Raster</b>	GeoTIFF
		 <b>NAR Labs</b> National Applied Research Laboratories National Space Organization

## Histogram of each bands

