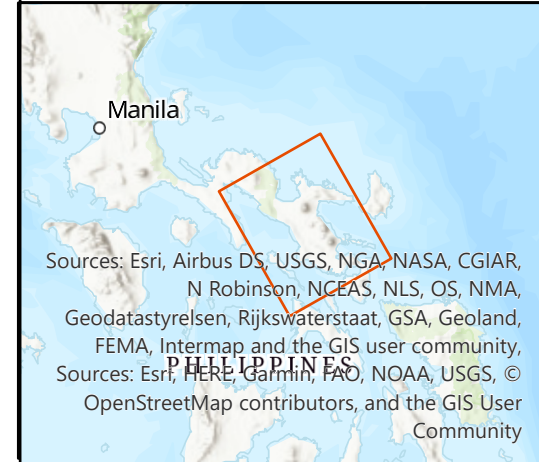
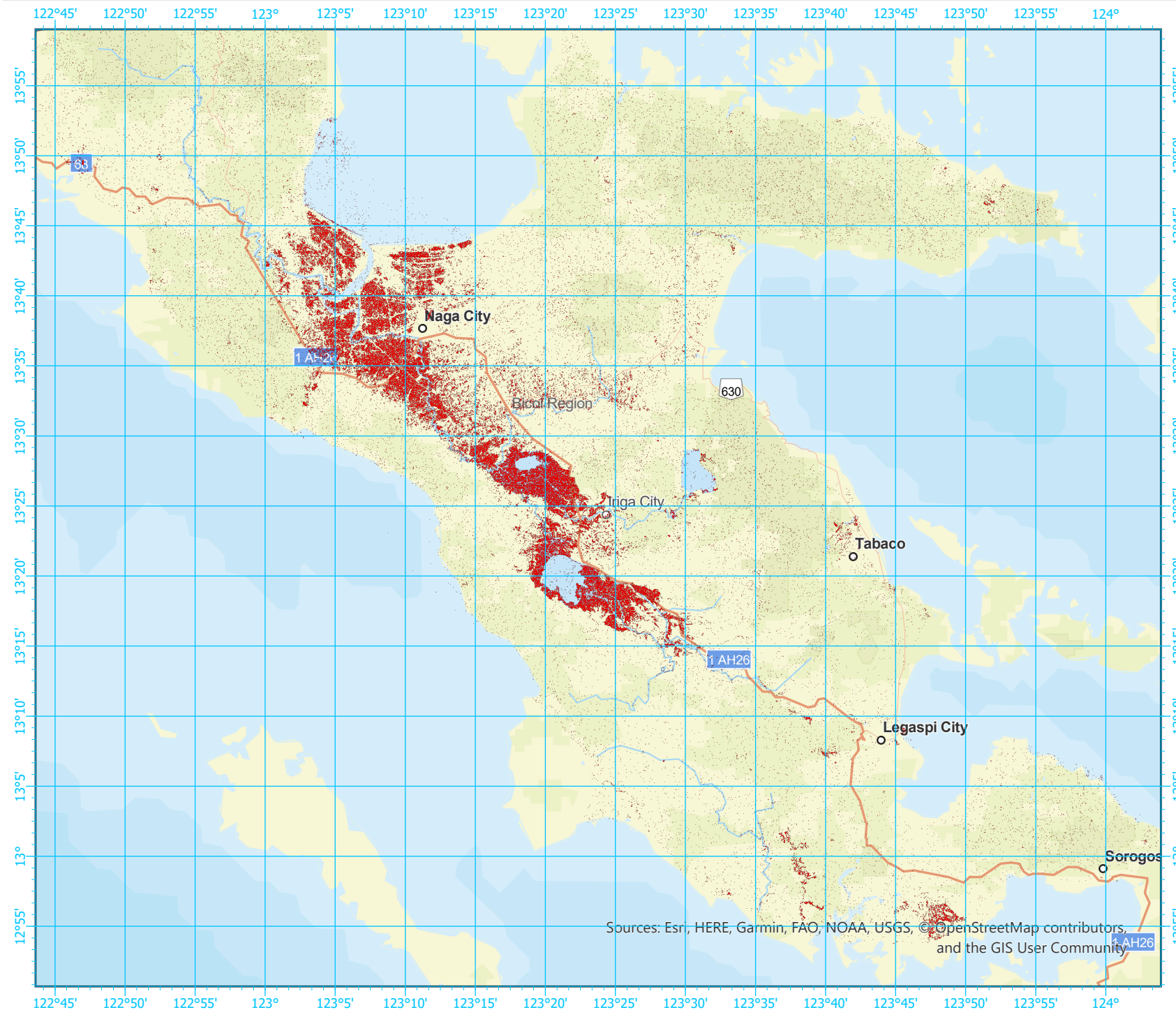


Philippines Storm

As observed by SENTINEL-1 image on 01 November 2020



Map Information

Coordinate System: GCS WGS 1984
Datum: D WGS 1984
Unit: Degree
0 9.5 19 38 Km

Legend

- Roads
- Water Bodies
- Study Area
- Major Changes/Reflectivity Decrement

Data Source

Satellite Images:
Pre- disaster: SENTINEL-1 Interferometric Wide Swath Level 1 Product 2020-09-26,T: 09:57:41.
Post-disaster: SENTINEL-1 Interferometric Wide Swath Level 1 Product 2020-11-01,T: 09:57:41.
Water bodies and Roads @ OSM (2020)

Description

The coloured areas shows the changes due to Philippines storm on 01 November 2020. The accuracy of this product is not validated.

Data Provider:

Sources: Esri, HERE, Garmin, FAO, NOAA, USGS, © OpenStreetMap contributors, and the GIS User Community