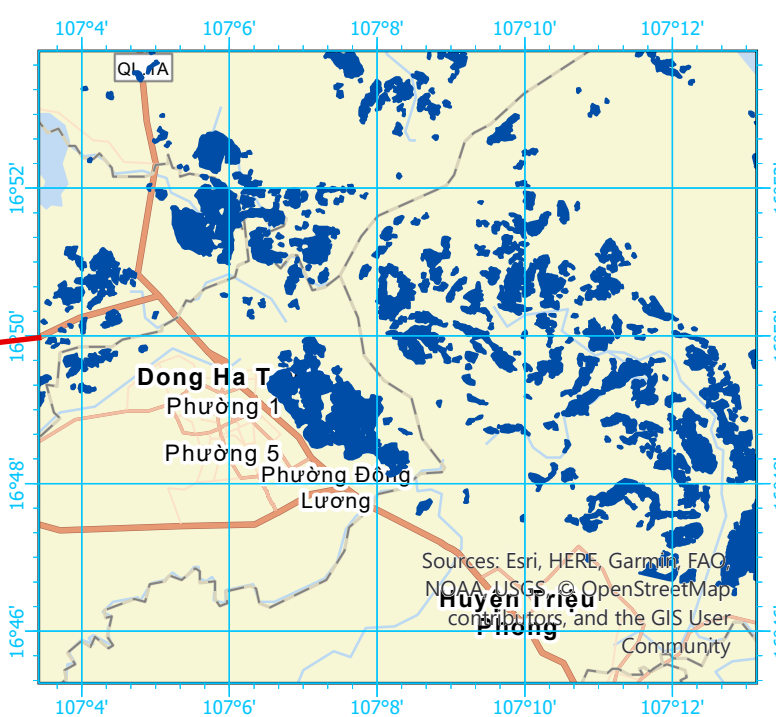
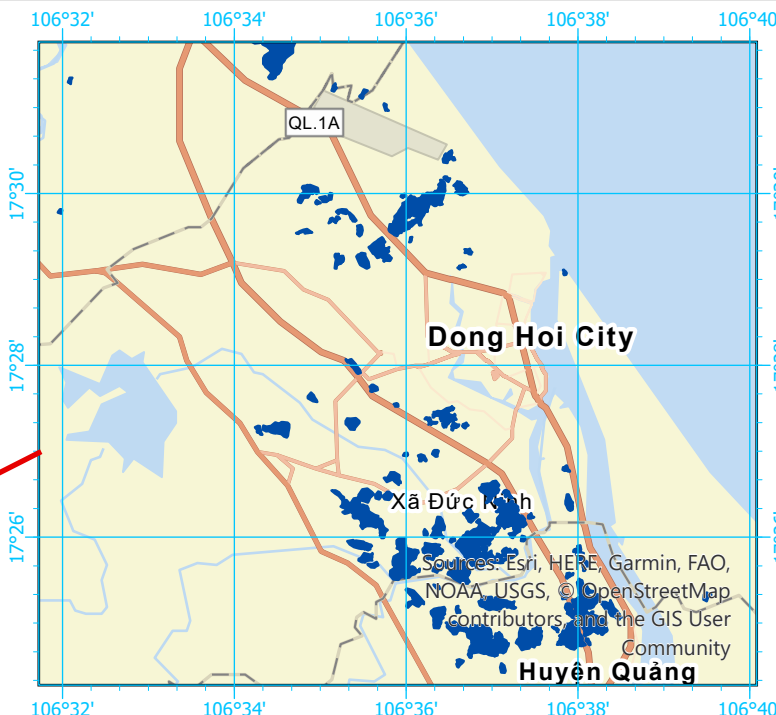
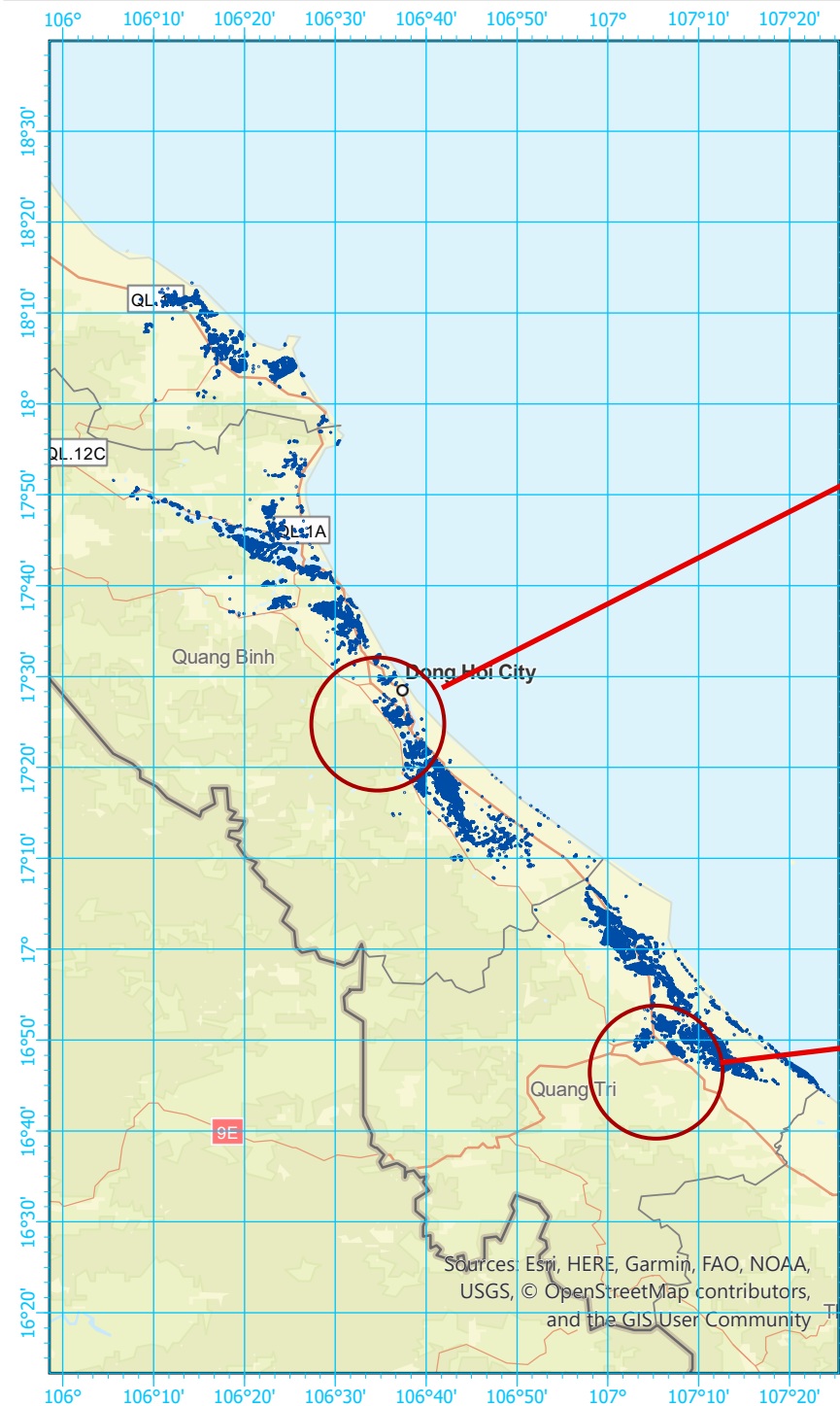


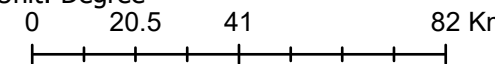
# Vietnam Flood

As observed by SENTINEL-1 image on 15 November 2020



### Map Information

Coordinate System: GCS WGS 1984  
 Datum: D WGS 1984  
 Unit: Degree



### Legend

- Roads (Orange line)
- Flooded Area (Dark Blue area)
- Water Bodies (Light Blue area)
- Study\_Area (Red outline)

### Data Source

Satellite Images:  
 Pre- disaster: SENTINEL-1 Interferometric Wide Swath Level 1 Product 2020-11-03,T: 22:43:41, and 2020-11-15,T:22:43:41.  
 Post-disaster: SENTINEL-1 Interferometric Wide Swath Level 1 Product 2020-11-15,T: 22:43:41.  
 Water bodies and Roads @ OSM (2020)

### Description

The dark blue areas shows flooded locations due to Vietnam flood on 15 November 2020. The accuracy of this product is not validated.

Data Provider: 