



# FORMOSAT-5 DIMAP Product Data-sheet

 <b>NSPO</b>	<b>Product Type</b>	FORMOSAT-5 Product Level4 PMS	 <b>NAR Labs</b> <small>National Applied Research Laboratories</small> National Space Organization
	<b>Product Name</b>	FS5_G002_PMS_L4UTM_20201129_053533	
	<b>Format</b>	DIMAP	
	<b>Raster</b>	GeoTIFF	



Product Parameters	
Product Name	FS5_G002_PMS_L4UTM_20201129_053533
Production Date-Time in UTC	2020-11-30 04:01:37
Acquisition Data-Time in UTC	2020-11-29 05:35:33
Spacecraft Name	FORMOSAT-5
Processing Level	04
Geometric Processing Level	ORTHO
Radiometric Processing Level	SYSTEM
Spectrum Type	PMS
Producer Identification	MSGPS
Producer Link	<a href="http://www.nspo.narl.org.tw">http://www.nspo.narl.org.tw</a>

Image Dimension	
Number of Spectral Bands	4
Number of Lines	13698
Number of Pixels per Line	15209
Pixel Spacing	2.00 (meter)

Band Information				
Band Identification	B1 (Bule)	B2 (Green)	B3 (Red)	B4 (NIR)
Gain Setting	2	2	2	2
Absolute Gain	0.040742	0.035910	0.043739	0.035388
Absolute Offset	0.000000	0.000000	0.000000	0.000000

Coordinate System	
Geocoding Table Identifictaion	EPSG 5.2
Horizontal Coordinate System Type	PROJECTED
Horizontal Coordinate System Code	EPSG: 32644
Horizontal Coordinate System Name	WGS 84/UTM44N

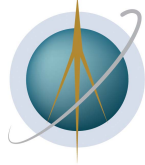
# FORMOSAT-5 DIMAP Product Data-sheet

 <b>NSPO</b>	<b>Product Type</b>	FORMOSAT-5 Product Level4 PMS	 <b>NAR Labs</b> <small>National Applied Research Laboratories</small> <b>National Space Organization</b>
	<b>Product Name</b>	FS5_G002_PMS_L4UTM_20201129_053533	
	<b>Format</b>	DIMAP	
	<b>Raster</b>	GeoTIFF	

Vertex Location						
	Line	Sample	Latitude	Longitude	X	Y
UL	0.50	0.50	N12.874	E80.060	398035	1423401
UR	0.50	15208.50	N12.875	E80.341	428451	1423401
LR	13697.50	15208.50	N12.627	E80.341	428451	1396007
LL	13697.50	0.50	N12.626	E80.061	398035	1396007
Center	6849.00	7604.00	N12.751	E80.201	413243	1409703

Incidences and Orientation (in units of degree)	
Satellite Elevation	89.179366
Satellite Azimuth	121.700247
LOS Along Track Angle	-0.217469
LOS Cross Track Angle	-0.666897
Orientation	192.290000
Sun Elevation	53.250000
Sun Azimuth	159.030000

# FORMOSAT-5 DIMAP Product Data-sheet



**NSPO**

**Product Type** FORMOSAT-5 Product Level4 PMS

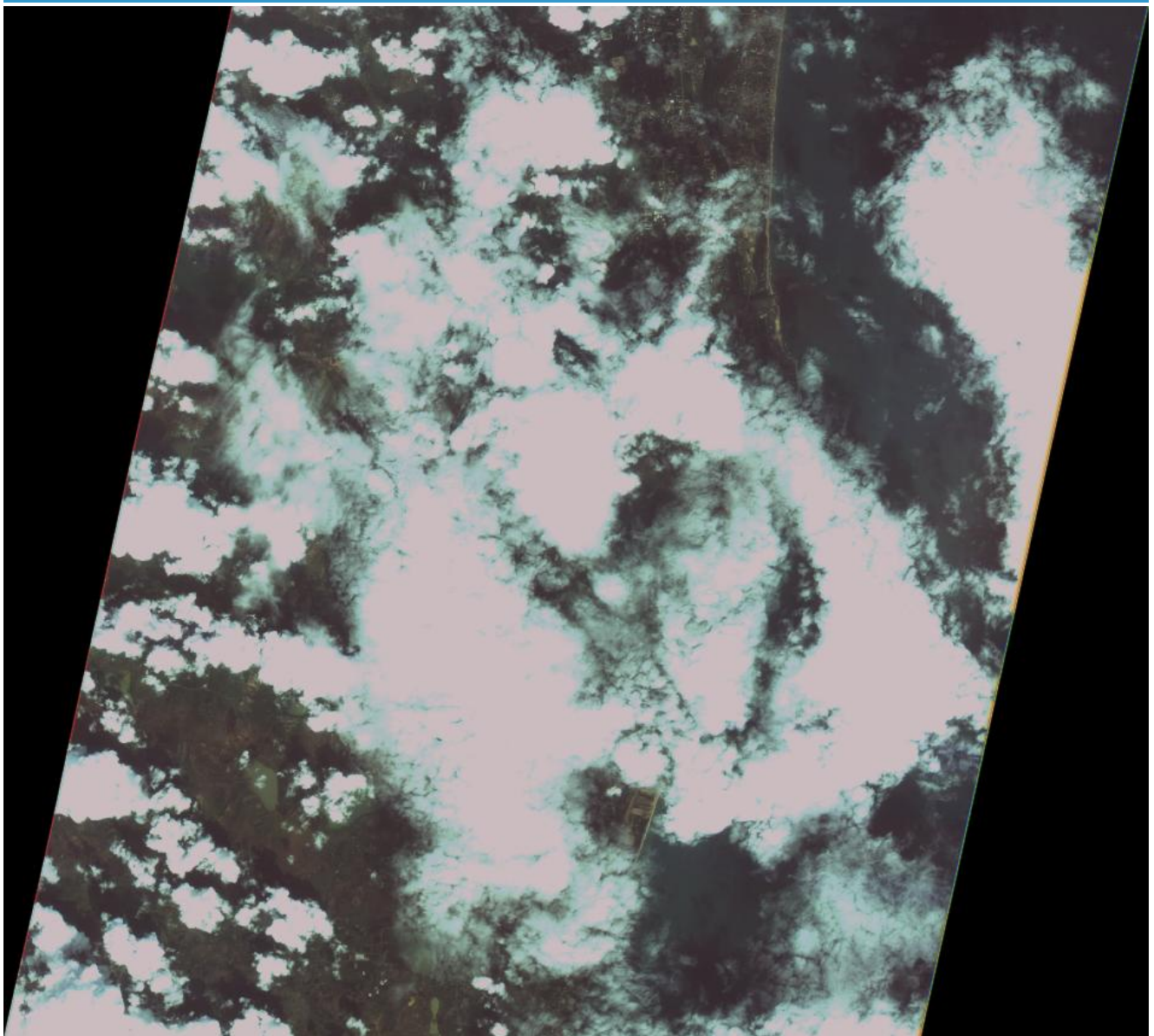
**Product Name** FS5\_G002\_PMS\_L4UTM\_20201129\_053533

**Format** DIMAP



**Raster** GeoTIFF

**NAR Labs**  
National Applied Research Laboratories  
National Space Organization

**FS5\_G002\_PMS\_L4UTM\_20201129\_053533\_qls.jpg**



# FORMOSAT-5 DIMAP Product Data-sheet

 <b>NSPO</b>	<b>Product Type</b>	FORMOSAT-5 Product Level4 PMS	 <b>NAR Labs</b> National Applied Research Laboratories National Space Organization
	<b>Product Name</b>	FS5_G002_PMS_L4UTM_20201129_053533	
	<b>Format</b>	DIMAP	
	<b>Raster</b>	GeoTIFF	

## Histogram of each bands

