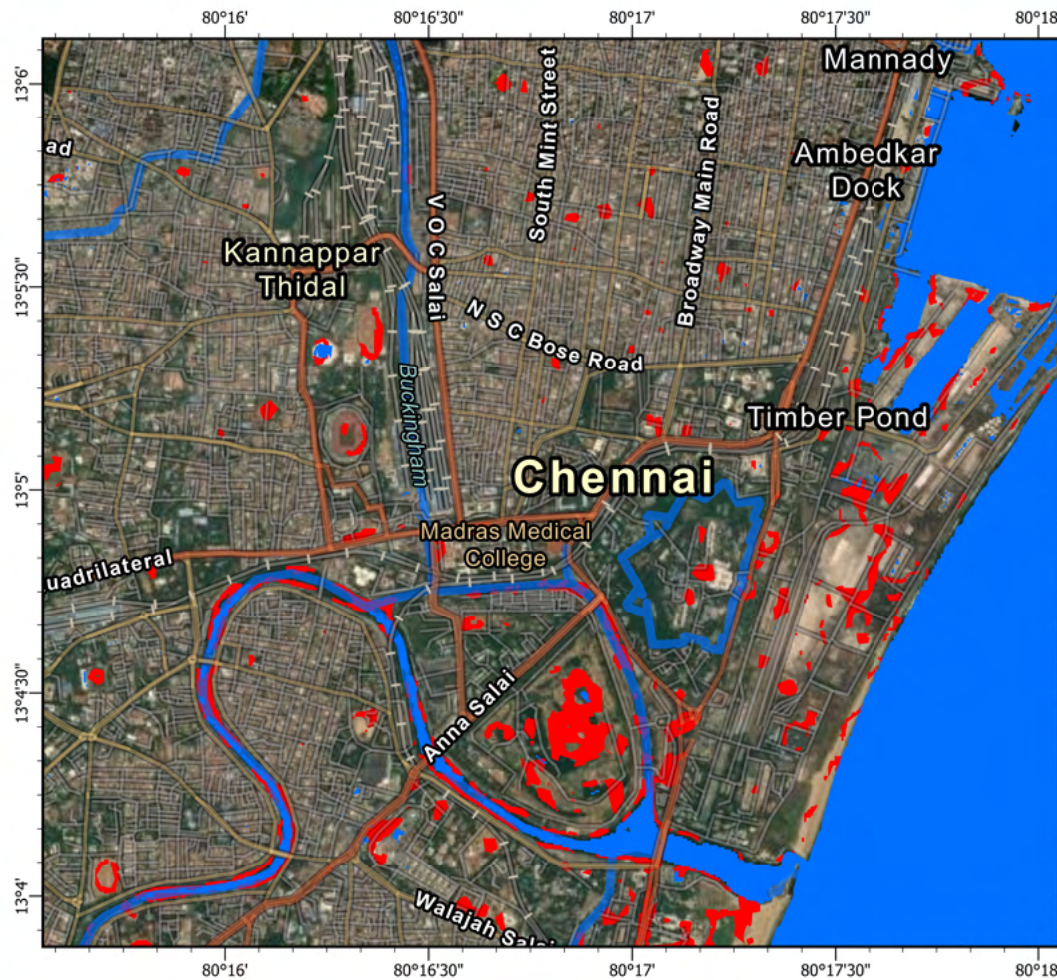
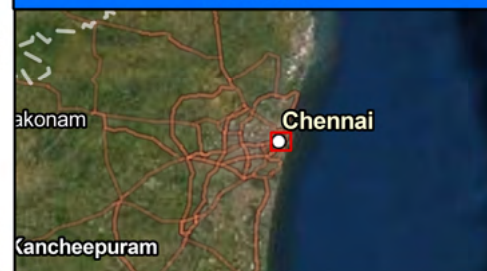


Flood Area in Chennai, India



As Observed by *Sentinel 1* on 16 Nov,2021



Locator



Legend

-  Permanent Waterbody
-  Sentinel1 Observed Flood Area

Description

- This Map shows flooded inundation area after heavy rainfall in Chennai on 07 Nov,2021
- Crops, Urban and Coastal areas are effected by flooding
- Accuracy of this product is not validated

Map Information

-Coordinate System: GCS WGS 1984 DD

-Unit Degree

0 0.21 0.42 0.84 1.26 1.68

 Km



Data Source

Copernicus Open Access Hub & ESA

- Satellite Product: **Sentinel 1**
- Pre-Cyclonic Strom: 2021-11-04
- Post-Cyclonic Strom: 2021-11-16