


DETECTED FLOOD WATER IN RAKHINE STATE, MYANMAR

As observed by ALOS-2 image on 14 May 2023




1,185 Km²
OBSERVED FLOOD

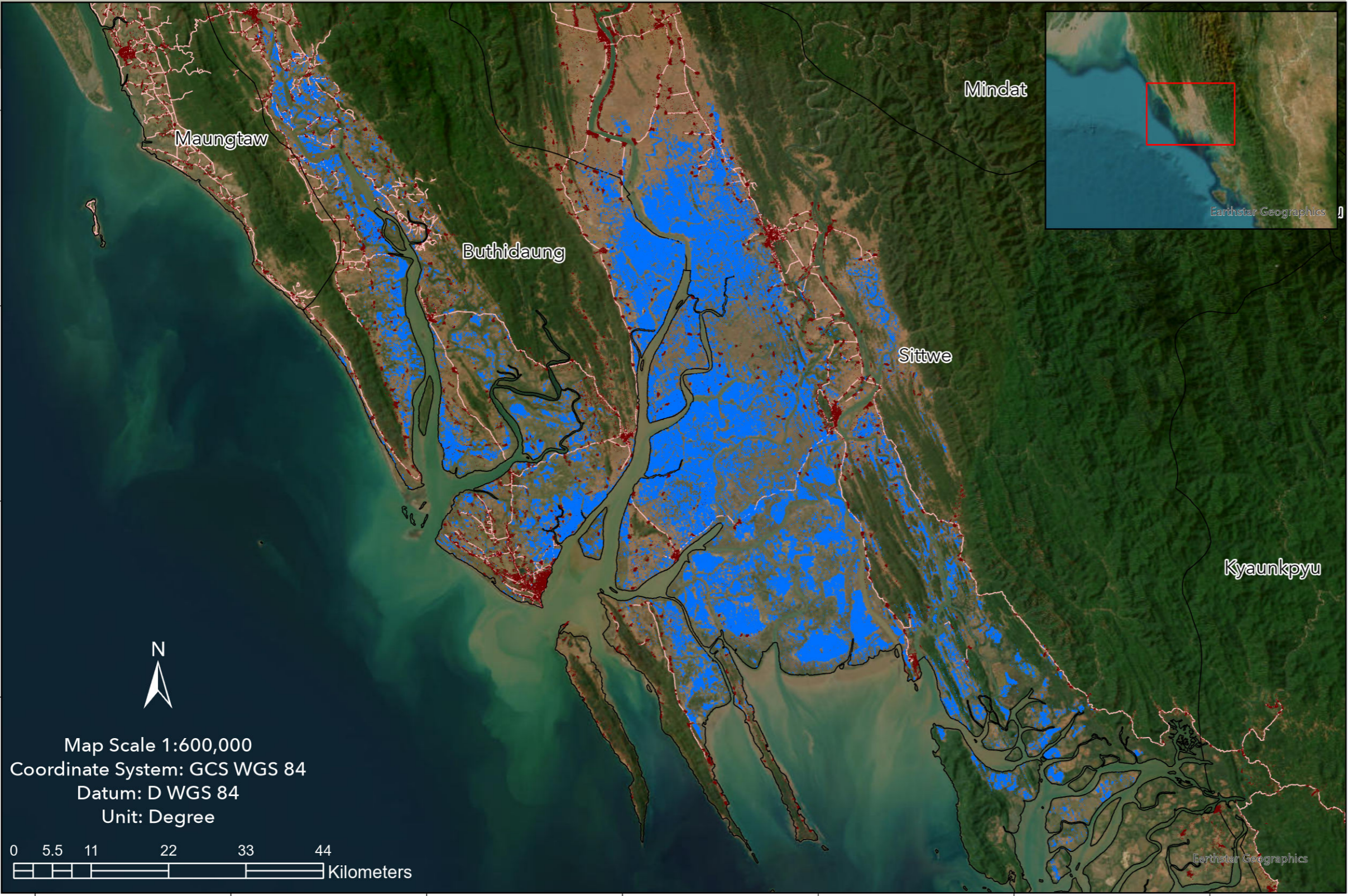
This map shows the detected flood water areas in Sittwe and Buthidaung Districts, Rakhine State, Myanmar, on May 14, 2023, due to heavy rains and strong winds from Cyclone Mocha.





 5
NUMBER OF DEATHS

 > 700
INJURED PEOPLE

 > 100,000
EVACUATED PEOPLE

Source: ReliefWeb (OCHA), 15/05/2023



-  Detected Flood Water
-  Building
-  District Boundary
-  Road

Satellite Image:
Pre-disaster : ALOS-2 PALSAR-2,
19 February 2023
Post-disaster : ALOS-2 PALSAR-2,
14 May 2023
Copyright: © JAXA (2023) -
All rights reserved.

GIS Data:
Building © Google Earth Engine (2023)
Road © OSM (2023)
Administrative Boundary © GADM (2023)

Map product made by GIC-AIT (v1.0).

Disclaimer: The accuracy of this product is not validated.

Map Scale 1:600,000
Coordinate System: GCS WGS 84
Datum: D WGS 84
Unit: Degree

