



Sentinel Asia

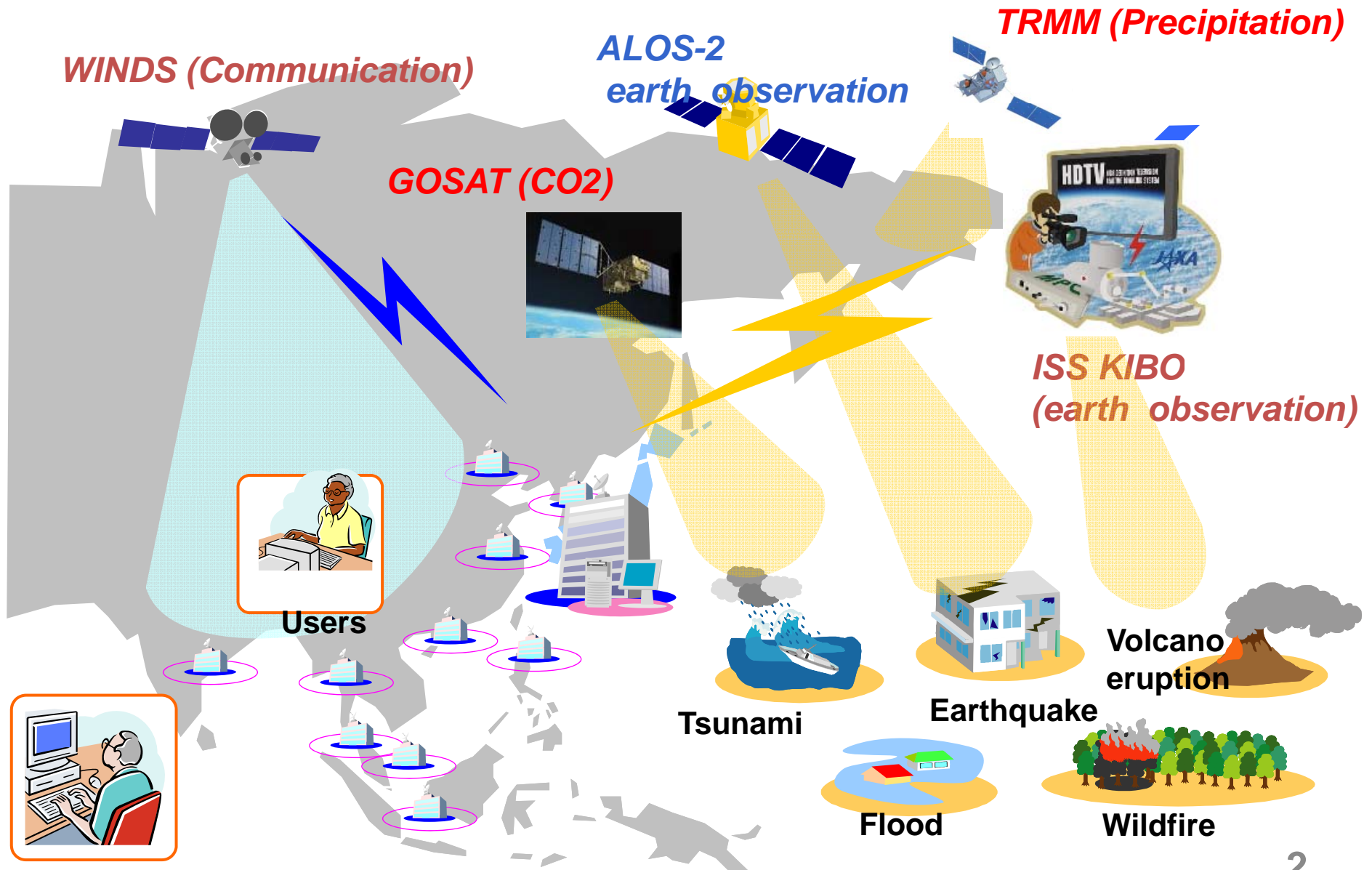
SENTINEL ASIA

**WINDS and other Assets,
services of JAXA**

Nov 2013

**Disaster Management Support Systems Office
Japan Aerospace eXploration Agency (JAXA)**

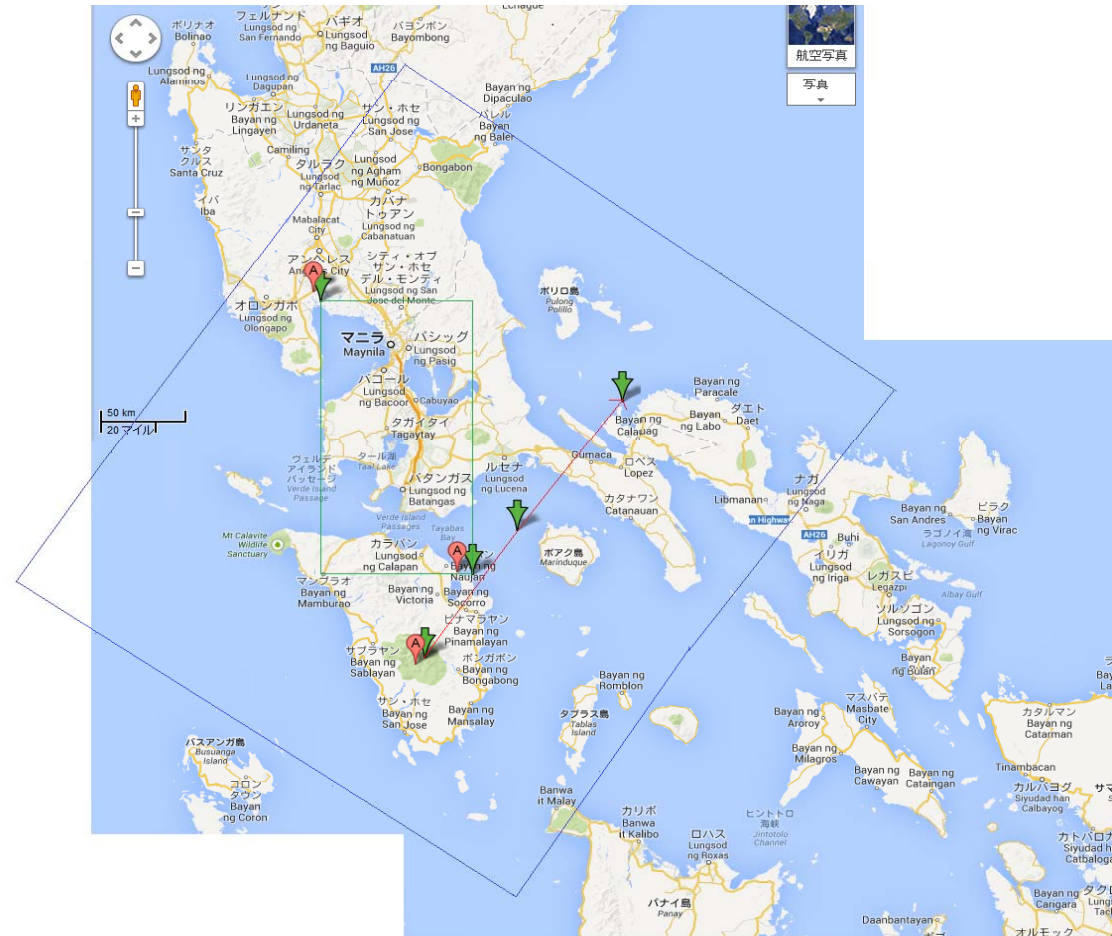
JAXA satellites



1. ISS KIBO

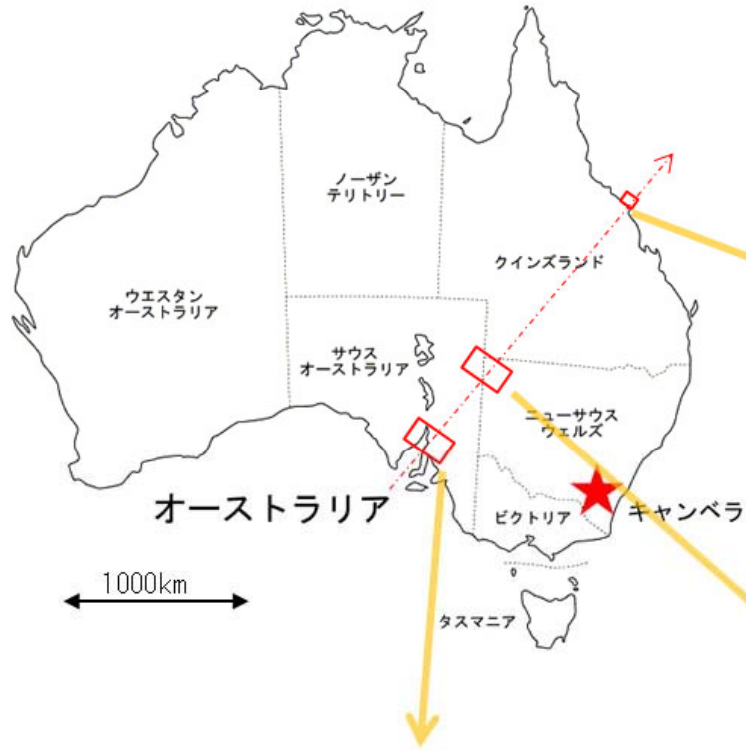


- observed by HDTV-EV
- swath 350km
- Movie and GeoTiff



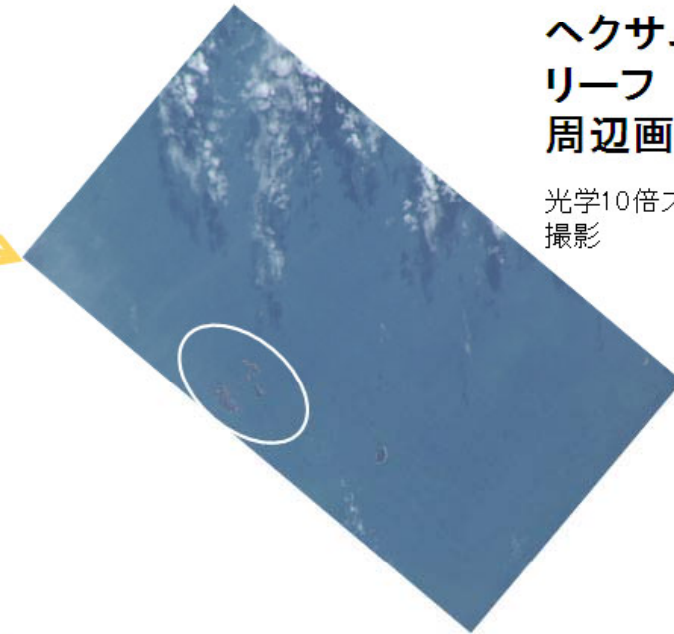
COTS HDTV-EFカメラによる地球表面撮影画像

8月19日HDTV-EFカメラ初撮影 (オーストラリア)



ヘクサムリーフ
周辺画像

光学10倍ズーム
撮影



スタート国立公園

ノコレッシュ自然保護区



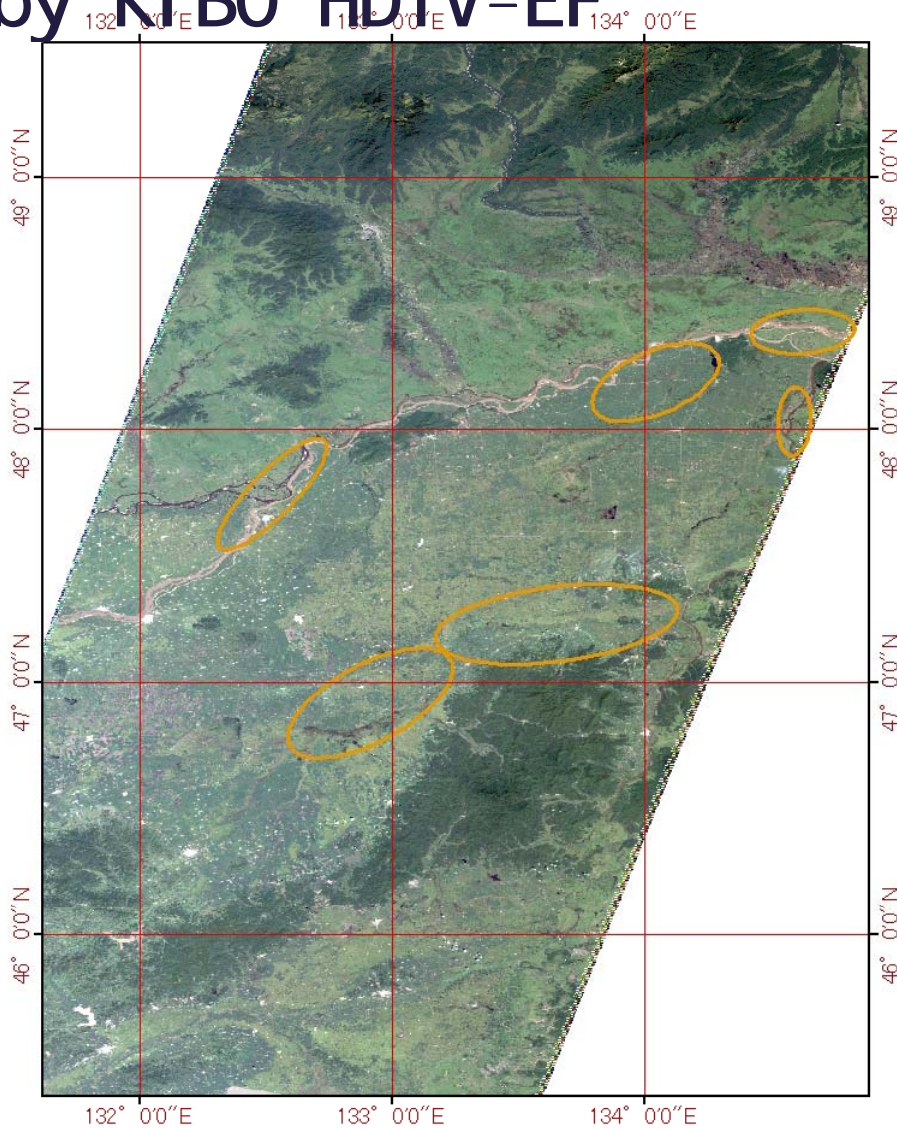
スペンサー湾画像



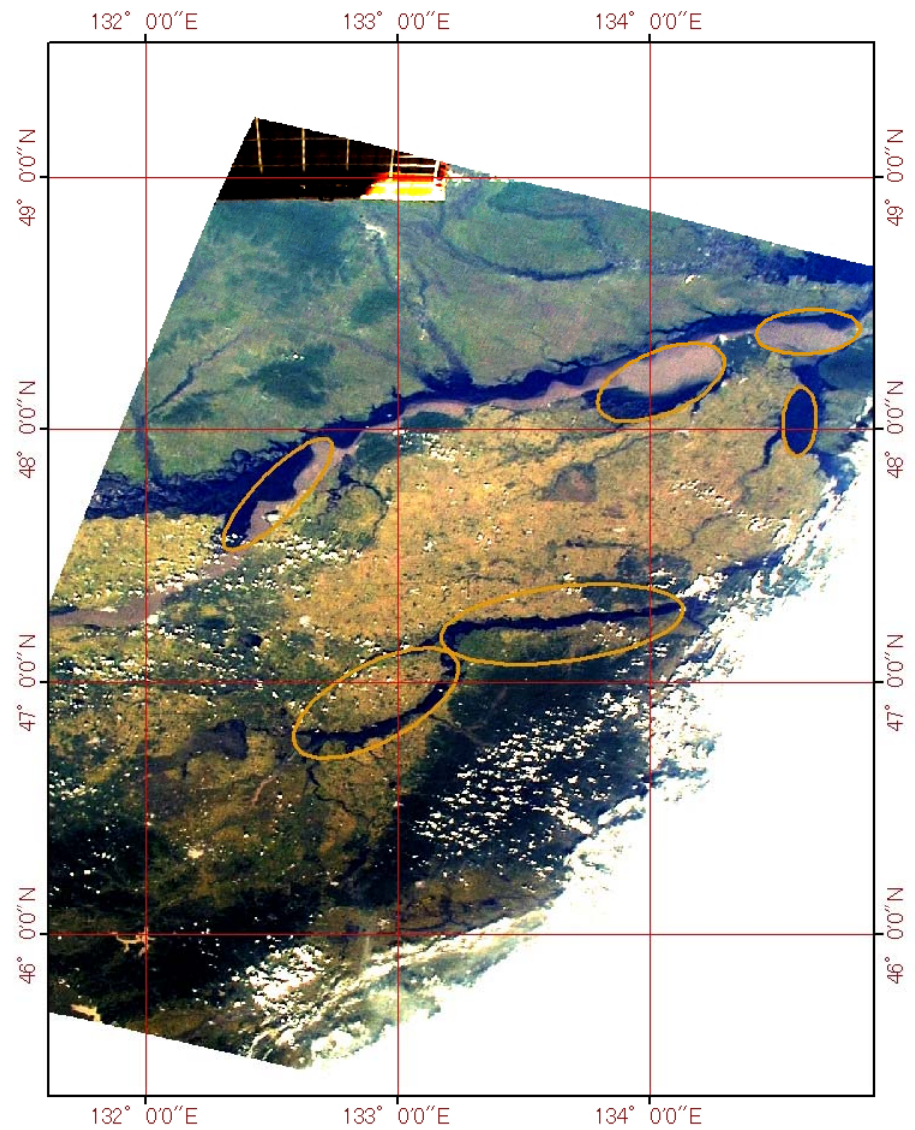
ミュータウイントジ国立公園

国立公園／自然保護区に囲まれた
内陸平原部画像

Recent Study of the Disaster Monitoring by KIBO HDTV-EF



Landsat (optical) on 30 Aug 2006



KIBO HDTV-EF on 11 Sept 2013

Flood- swollen regions are marked with orange

Movie by KIBO



2. GOSAT

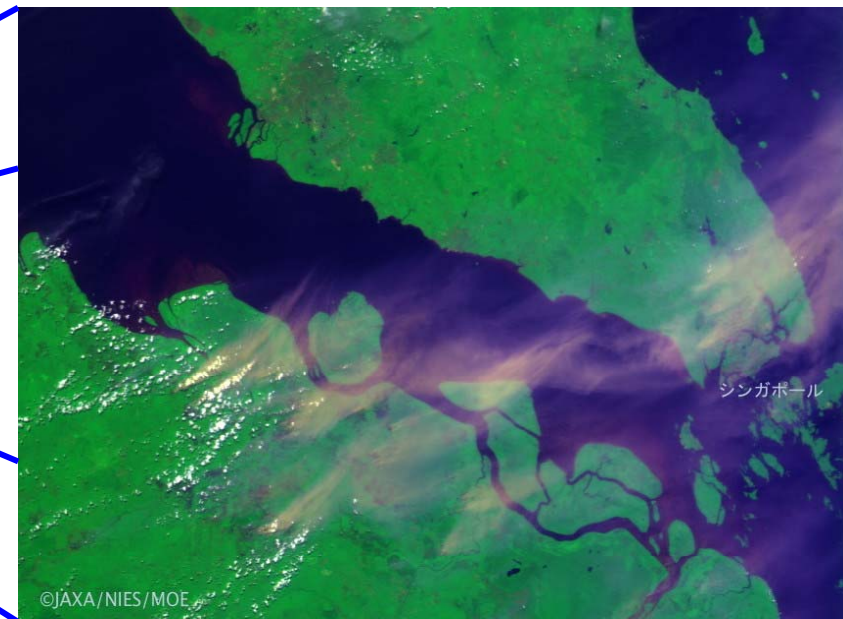
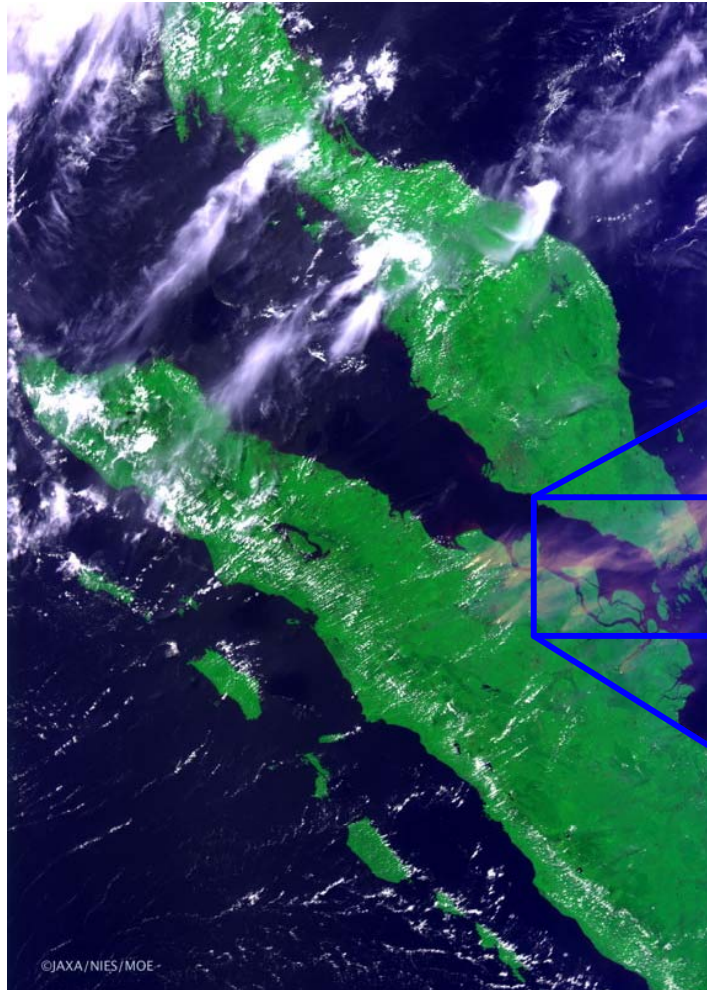


- observes Greenhouse gases (CO₂, CH₄, N₂O)
- Swath (CAI 960km)



2. GOSAT

CAI Products example (Indonesia forest fire case)



2. GOSAT



Anyone can access some kinds of GOSAT products. Please obey the site Policy

Firefox

GOSAT User Interface Gateway (GUIG) x 20130624_fig1v2.png (PNG 画像, 1192x... x 20130621_fig2_small.jpg (JPEG 画像, 5... x +

data.gosat.nies.go.jp/GosatUserInterfaceGateway/guig/GuigPage/open.do;jsessionid=2ADCFB624CD36847f

Yahoo! JAPAN

Greenhouse gases **GOSAT** PROJECT Observing SATellite

GOSAT Project | NEWSLETTER | Japanese | English

GOSAT User Interface Gateway (GUIG)

This web site provides processed products of GOSAT observation data.

GUIG system is out of service f

News & Topics

2013/11/21

<Announcement of the Observation request for RA researchers (for Feb., 2014) >
We will start accepting the observation request (from Feb. 3 to Mar. 2, 2014) of GOSAT/FTS from the PIs.
*Period for the observation : Feb. 3 (Mon) through Mar. 2 (Sun), 2014 (UT)
*Period to accept observation requests : 15:00 Nov. 27 (Wed) through 14:59 Dec. 18 (Wed), 2013 (UT).

2013/11/19

<Estimated Correction Table for Δ AT & Δ CT Angles for geolocation error in FTS L1B has been updated.>
"Estimated Correction Table for Δ AT & Δ CT Angles for geolocation error in FTS L1B" has been updated. In this update, the information corresponding to the next observation periods were added.

Oct. 28, 2013 02:42:31 (UT) - Nov. 11, 2013 02:09:59 (UT)

2013/11/08

<On stopping V01.xx FTS SWIR L3 data distribution>

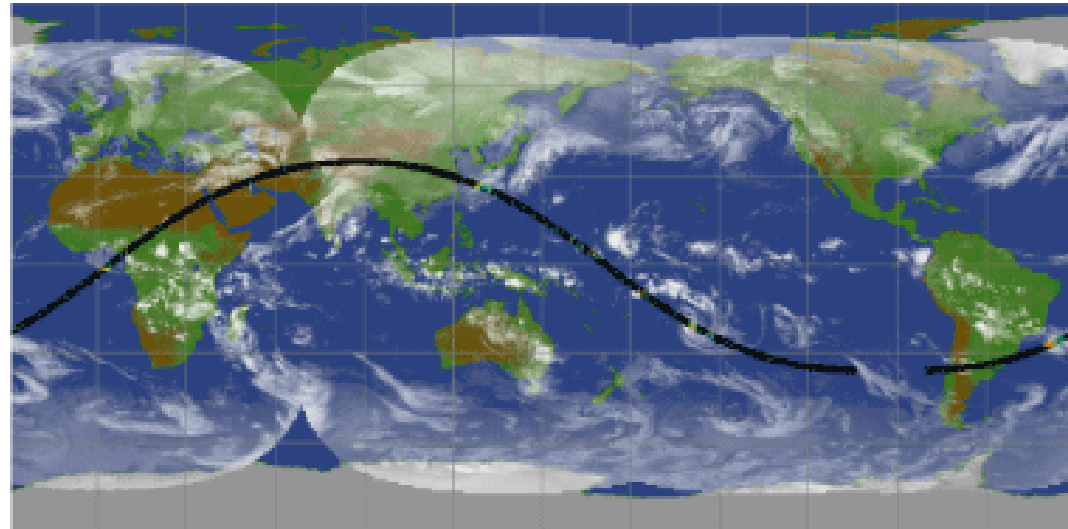
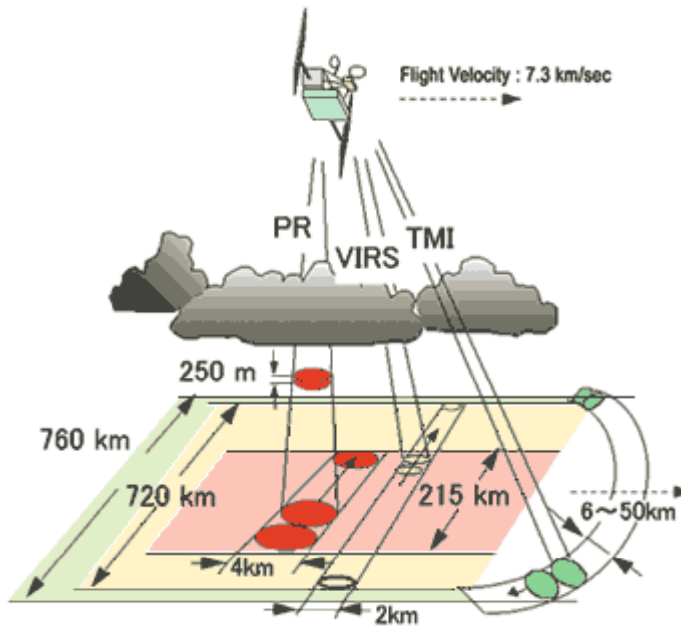
[Maintenance Schedule](#) [Archives](#) [Update History](#)

- Top
- Login
- Product & Service
User registration & Observation data distribution service is here
- Gallery
Images of observation data are here
- How to use this website
Operation manuals are here. Please check them at the start.
- Data Users Handbook
- Point of Contact/ FAQ
- Operating Environment
- Tools
- Site Policy

Site Policy

3. TRMM

- observe precipitation by 3 of sensors(PR,TMI,VIRS)
- TRMM into an orbit of 380 km with the orbital inclination at 35 degrees.



3. TRMM



Tropical Cyclones Database

Firefox | sharaku.eorc.jaxa.jp/TYP_DB/index_e.shtml

Tropical Cyclones
JAXA/EORC Tropical Cyclone Database

日本語

Tropical Cyclones data observed by TRMM/PR,TMI,VIRS, Aqua/AMSR-E and Midori-II (ADEOS-II)/AMSR are available.

Search Tropical Cyclones

Quick Search

You can see and download the tropical cyclones data observed by PR, TMI, AMSR-E and AMSR in each year. Please select an area.

North Indian Ocean North Western Pacific North Central Pacific North Eastern Pacific North Atlantic
South Indian Ocean South Pacific

Extended Search

[HELP](#)

- Select Sensor
 - TRMM / PR,TMI,VIRS
 - Aqua / AMSR-E
 - Midori-II / AMSR
- Search Area(Pharal Choise is possible)
 - All Area
 - North Western Pacific
 - North Central Pacific
 - North Eastern Pacific
- Search Year/Month
 - 2013 (From) 10 (To)
 - 2013 (From) 10 (To)
- Typhoon Name Search (Blank possibility)

submit

Real-Time Monitoring

NEW

The latest typhoon image which TRMM observed shows only an image as "[JAXA/EORC Real-Time Monitoring](#)".

14 (MSL1004)
2013/11/20 11:21(UTC)

PR/VIRS Image

TMI Image

Information

Documents

- [User's Guide](#)

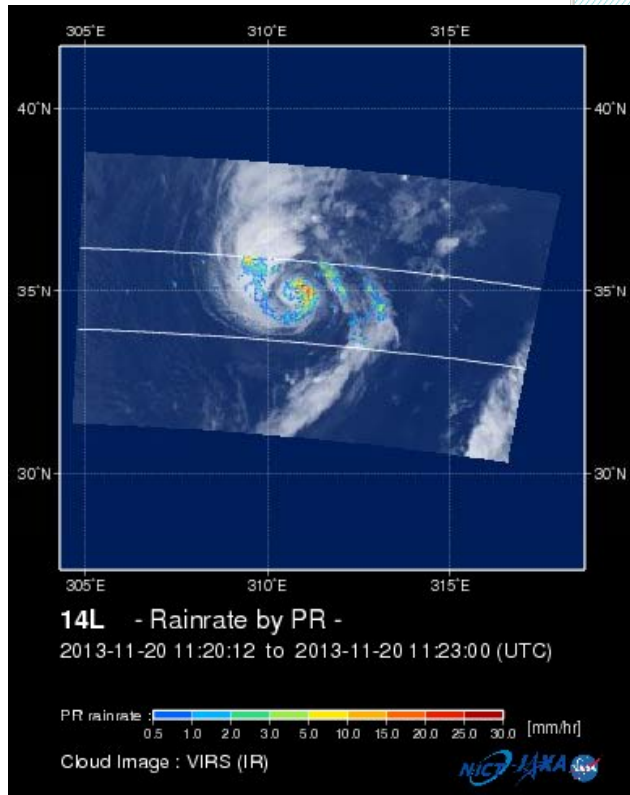
Links

- [Tropical Cyclones Related](#)
- [TRMM/Aqua/Midori-II Related](#)
- [TRMM Website](#)
- [AMSR/AMSR-E Website](#)
- [Midori-II Website](#)
- [TRMM Tropical Cyclones Database](#)
- [AMSR/AMSR-E Tropical Cyclones Database](#)

3 TRMM

Anyone can access Realtime
Tropical cyclone information

Please obey site policy.



Firefox

sharaku.eorc.jaxa.jp/TYPHOON_RT/index.html

Yahoo! JAPAN

Tropical Cyclones

JAXA/EORC Real-Time Monitoring

Top 日本語

Information

The Real-time monitoring for tropical cyclones by AMSR2 was released. (June 13, 2013)

Links

Tropical Cyclones Database

You can access to online archive of images, movies and data of tropical cyclones observed by TRMM/Aqua /Midori-II satellites.

Last Two Months

Asia

- Show All Typhoons
- Show Active Typhoons
- 04B(FOUR_B)

America

- Show All Typhoons
- Show Active Typhoons
- 14L(MELISSA)

Oceania

- Show All Typhoons
- Show Active Typhoons

Latest Image

PR/TMI (TRMM)

PR/VIRS Image

TMI Image

Observation Area

America
14L(MELISSA)
Satellite Obs.
• Date/Time : 2013/11/20 11:21(UTC)
• Lat/Lon : 29.7N-40.6N
55.2W-42.7W
Info. (2013/11/20 09:00(UTC))
• Pressure : - hPa
• Winds : 045 kt

AMSR2 (GCOM-W1)

Precipitation

Water Vapor

Observation Area

America
14L(MELISSA)
Satellite Obs.