

# JPTM Report

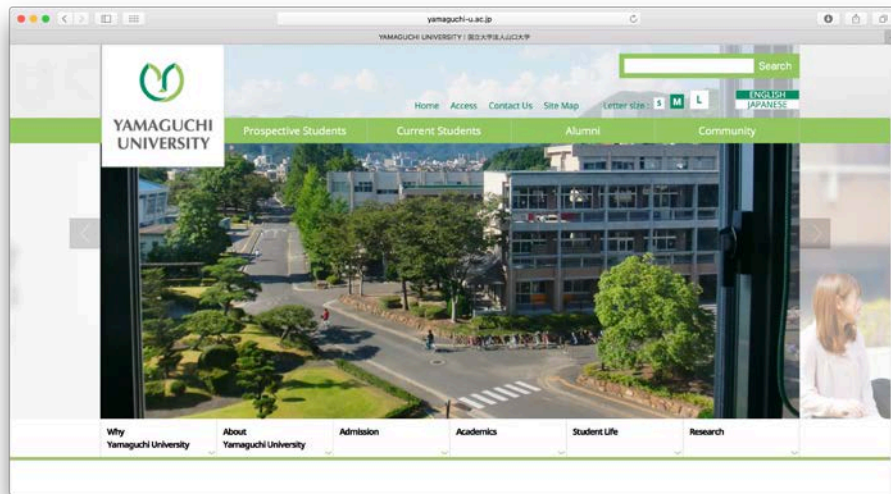
## by Yamaguchi University

Yamaguchi University

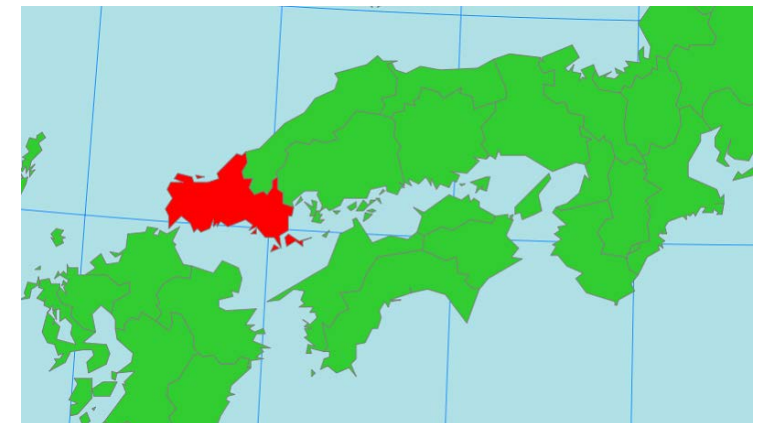
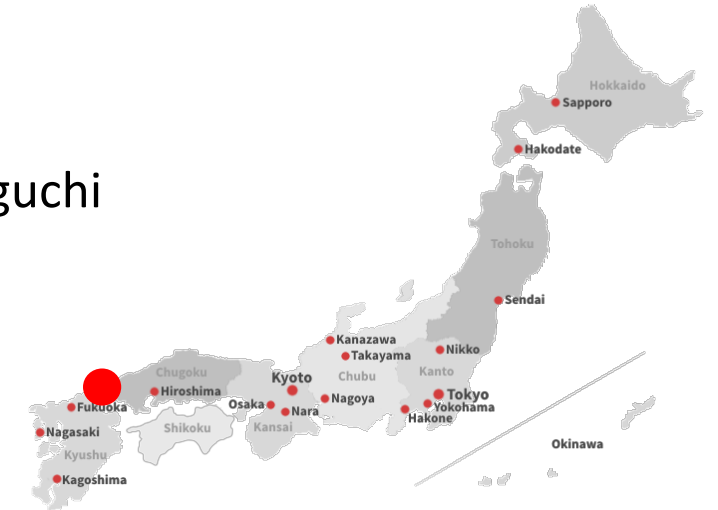
Center for Research and Application for Satellite Remote Sensing

Deputy Director, Dr. Masahiko Nagai

# Yamaguchi University, 200th anniversary of the founding, in 2015



Yamaguchi



"200th anniversary celebration and commemoration ceremony"

# Center for Research and Application for Satellite Remote Sensing, Yamaguchi University



"Opening Ceremony, on 9<sup>th</sup> February 2017"

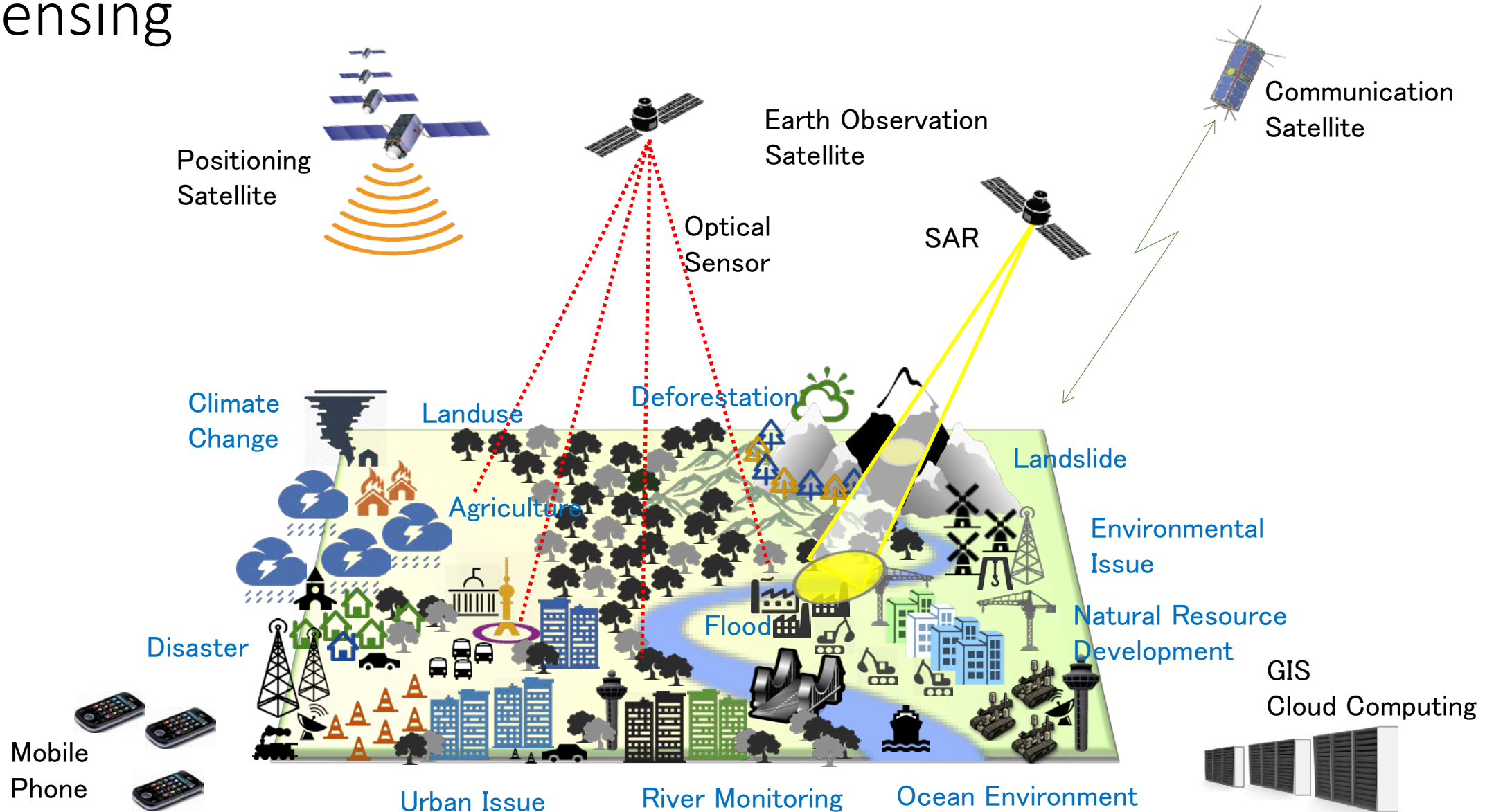


# Four missions for Center for Research and Application for Satellite Remote Sensing

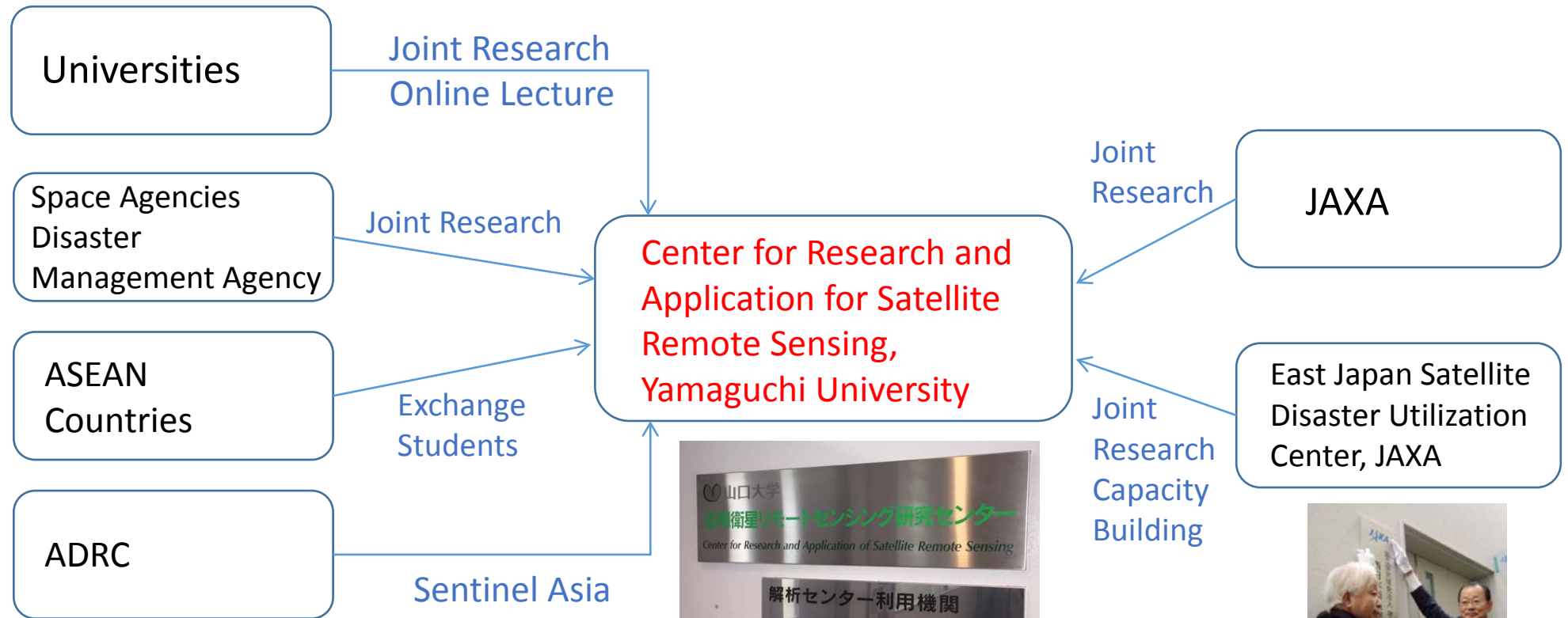
- ① To promote world-class researches for satellite remote sensing
- ② To cultivate human resources capable of promoting a wide range of researches for satellite remote sensing and space technology
- ③ To contribute for disaster operations and improve public's safety and security
- ④ To promote of local industry and create new industry for space utilization technology



# ① To promote world-class researches for satellite remote sensing

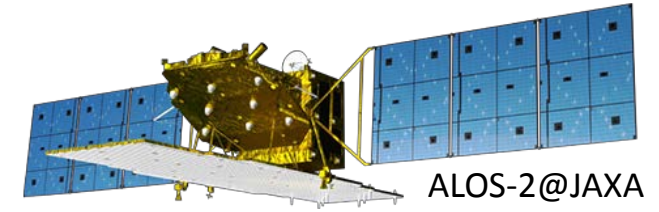


## ② To cultivate human resources capable of promoting a wide range of researches for satellite remote sensing

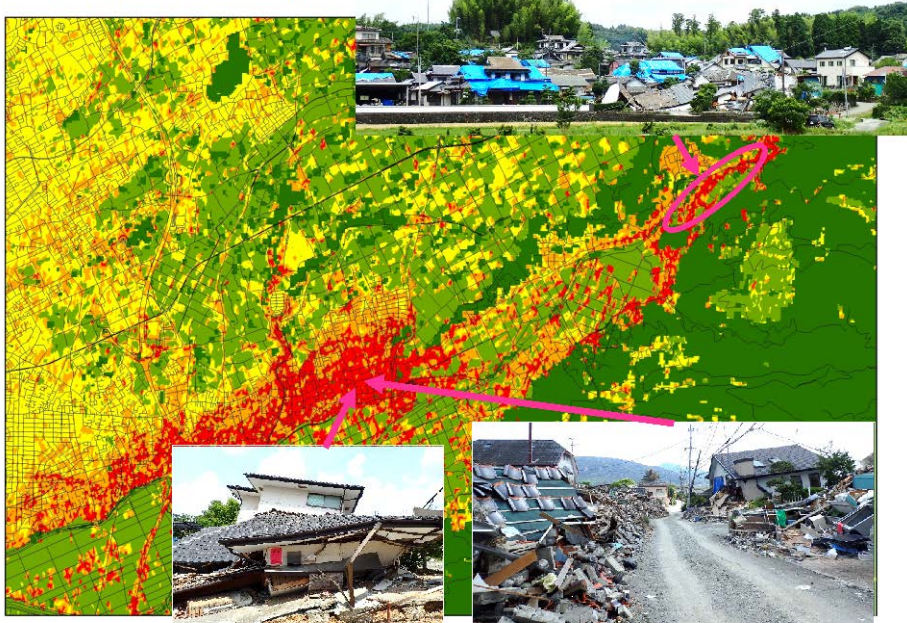




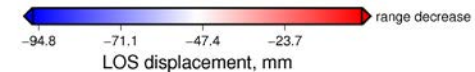
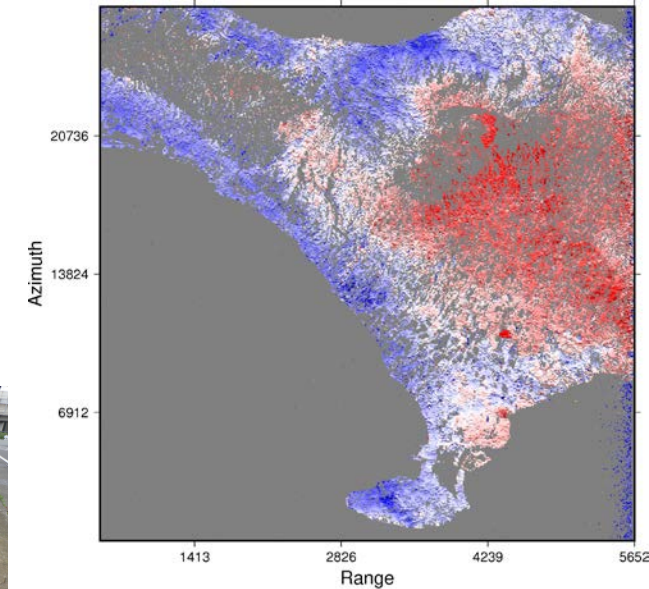
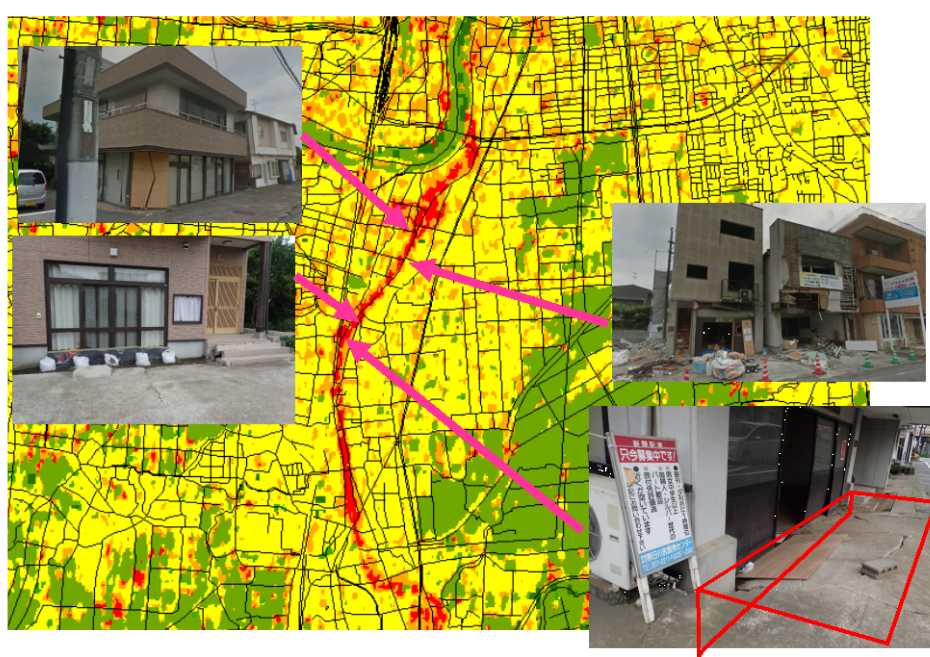
# ③ To contribute for disaster operations and improve public's safety and security



**Damaged Buildings**



**Building Damage Caused by Liquefaction**



Damage Detection by ALOS-2 for Kumamoto Earthquake in April 2016.

# Sentinel Asia Activity



Prof. Miura

- Vice President of Yamaguchi University
- Director, Center for Research and Application for Satellite Remote Sensing

ril 15, Japan (No.1)



Minamiaso village, Aso gun in Kumamoto Prefecture  
~Near by Asohitsu golf club~



2010 – 2014

Senior Scientist, JAXA

P-DAN, PM for International Charter

2010 – 2014

Associate Director, GIC/AIT

P-DAN, PM for International Charter

2014 – 2016

Associate Professor, the University of Tokyo

P-DAN for Academic member

2016 –

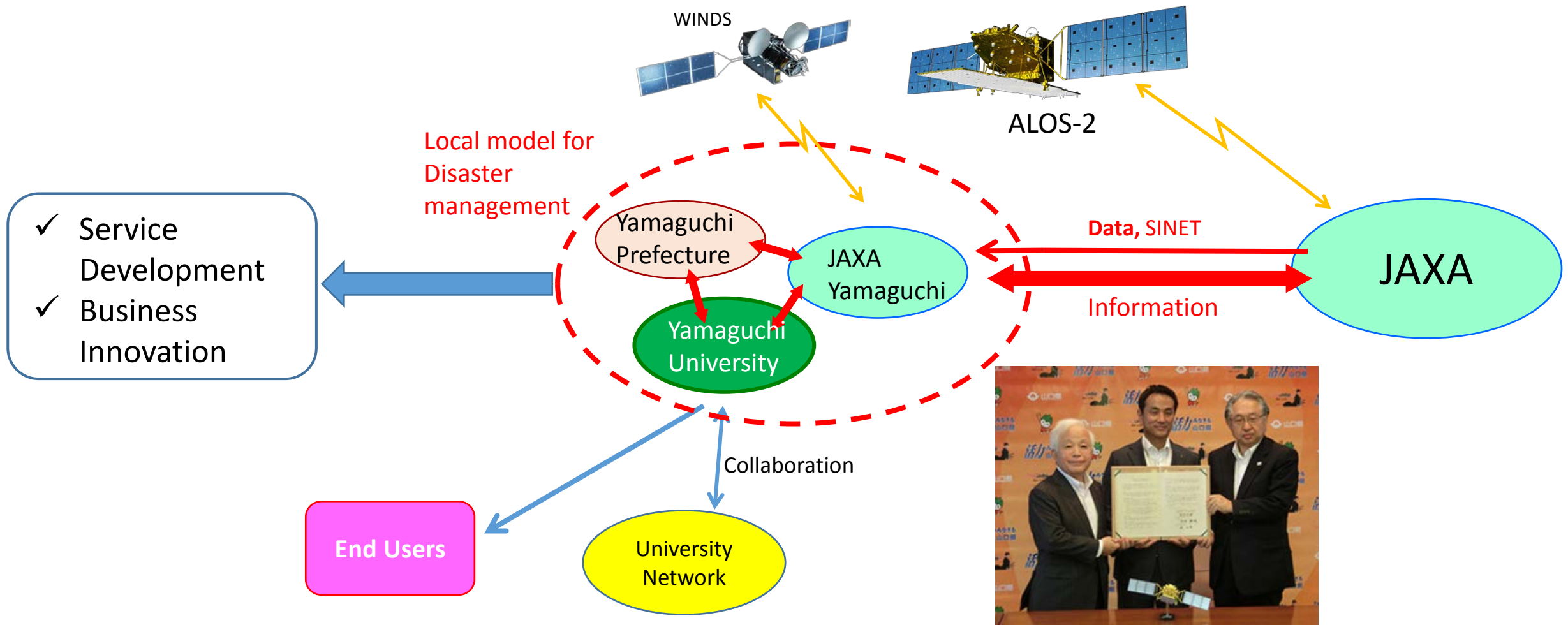
Deputy Director, Center for Research and Application for Satellite Remote Sensing, Yamaguchi University

Associate Professor, Graduate School of Sciences and Technology for Innovation, Yamaguchi University

How to apply "Sentinel Asia" in Local Community?



# ④ To promote of local industry and create new industry for space utilization technology



# Contribution to Sentinel Asia



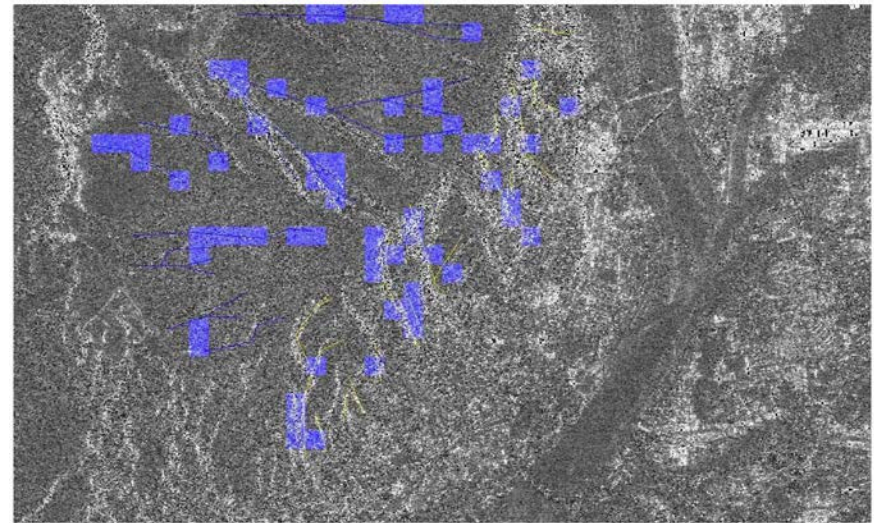
Data Analysis for Emergency Disaster Operation



Project Manager  
for "International Charter"



Capacity Building for Sentinel Asia



Automatic Damage Detection by Deep Learning