



6th Joint Project Meeting of Sentinel
Asia STEP -3 (JPTM2018Awaji)
1-2 November 2018, Awaji Island, Japan



By Lusete Laso Mana
National Disaster Centre
Papua New Guinea

PRESENTATION OUTLINE

- A. Brief Country Profile
- B. Overview of Hazards in PNG
- C. Overview of National Disaster Centre
- D. Sentinel Asia – PNG Context
- E. Challenges and Way Forward

Brief Country Profile

- Largest island nation in the Pacific Ocean
- Share border with Indonesia, Australia, Solomon Island & Vanuatu
- Land mass: 462,840 km² (178,704mi²).
 - * $\frac{3}{4}$ tropical rainforest
 - * $\frac{1}{4}$ delta plains, flat grassland & mangrove swamps

The topography of PNG is among the most rugged in the world, with altitudes of over 4,000 meters

- Total Population: 8.251 million (2017)
- 22 political boundaries – 22 provinces
- Language: 850, English is official , Pidgin and Motu are commonly spoken by everyone.
- Capital City: Port Moresby



City of Port Moresby

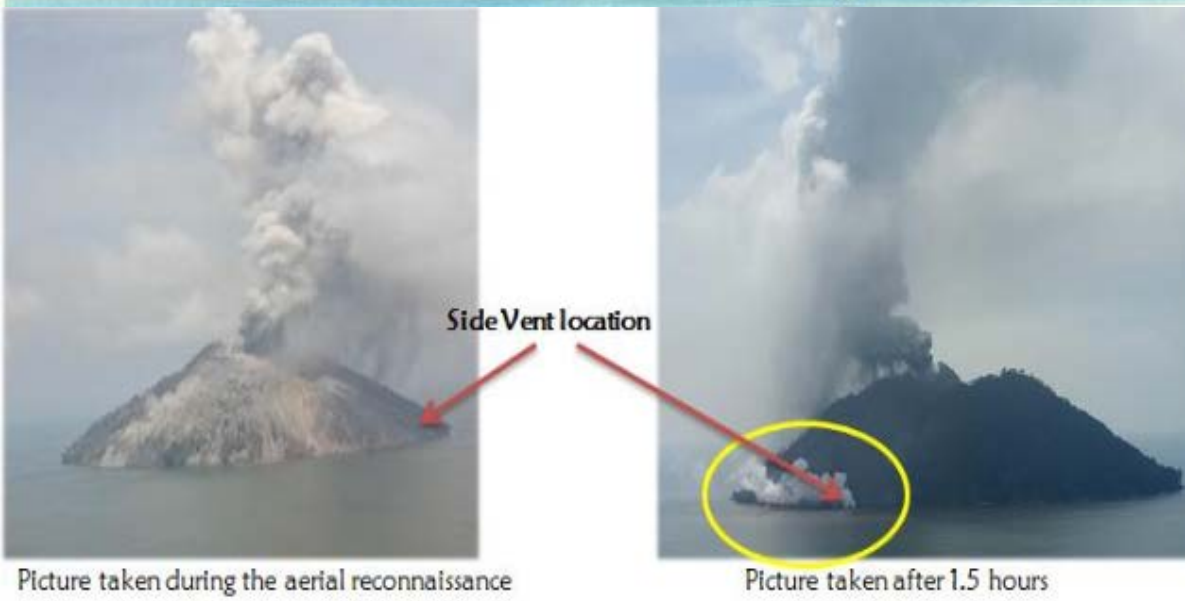


HAZARDS IN PNG



Due to countries geographical position, we experience many geological we experience many disasters.

- Volcano (14 active, 22 dormant & over 50 extinct
- Earthquake
- Tsunami
- Landslides
- Drought/Frost
- Flooding
- Tropical Cyclone
- Sea Level rise

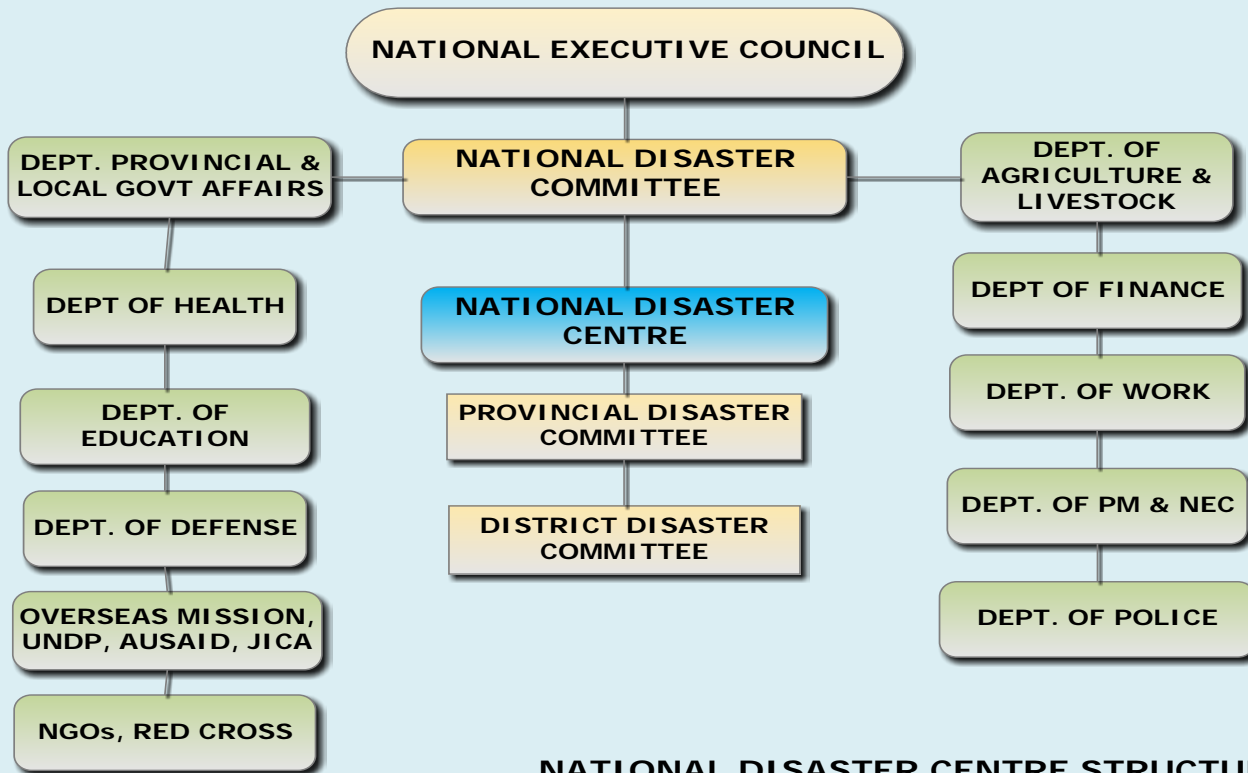


OVERVIEW OF THE NATIONAL DISASTER CENTRE

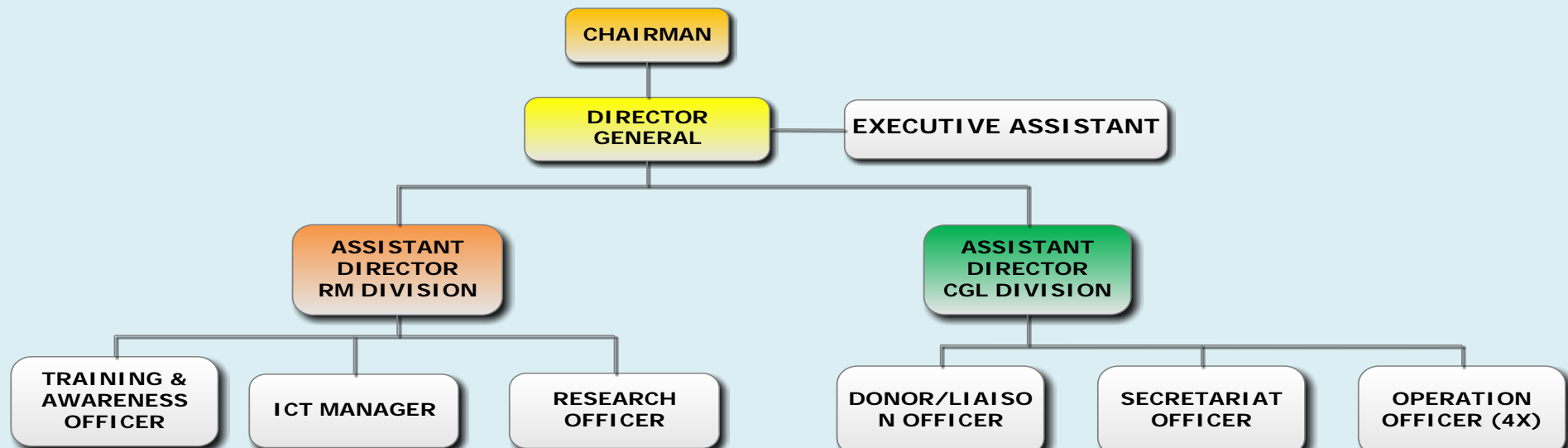
- The National Disaster Centre was established by an Act of Parliament – Chapter 408 – Disaster Management Act
- NDC is housed under the Dept. of Provincial & Local Level Government Affairs and is responsible for managing disasters in PNG
- NDC is headed by the Director General who is appointed by the National Executive Council
- Overall role of NDC is to coordinate the management of disasters & emergencies in PNG
- NDC & Provincial Disaster Committee have primary responsibility for implementing & coordinating disaster countermeasure activities, before, during & after disaster or emergency situations.



ORGANISATIONAL STRUCTURE



NATIONAL DISASTER CENTRE STRUCTURE



NDC FUNCTIONS & ROLES

- ❑ Implement policies & decisions of NDC;
- ❑ Advise NDC on all disaster management matters;
- ❑ Act as Secretariat to NDC & its sub-committees;
- ❑ Maintain a disaster management database;
- ❑ Co-ordinate, provide support & guidance to all stakeholders & PDCs
- ❑ In times of disasters, monitor disaster situation
- ❑ Provide assistance to affected areas
- ❑ Liaise with donor agencies, other countries through Foreign Affairs for assistance



PNG NDC JPTM - SENTINEL ASIA

- NDC became JPTM member in November 2016
- NDC membership was made public in the media and all stakeholders information
- All our DRM partners and stakeholders were informed about this membership
- Any request for satellite data be request from us.



Challenges and Way Forward

Challenges

- Lack of technical skills to manipulate raw data for specific needs
- Lack of commitment by government mapping agencies in processing data on time.

- Data/information sharing

Way Forward

- Training is needed for both and provincial disaster offices and NDC
- Make provision for all government agencies to share data with NDC

[S-ASIA]Disaster Data related to Emergency Observation registration inform(Volcano eruption, Papua New Guinea)

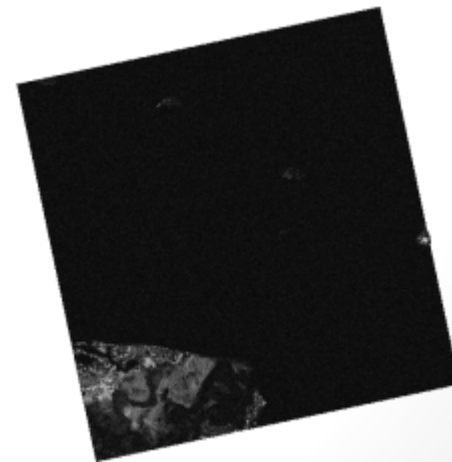
z-sentinel.asia@ml.jaxa.jp

Extra line breaks in this message were removed.

Sent: Fri 26/01/2018 1:18 PM

To: Laso Mana

[Disaster Info ID] :JPJXisis0001201801250004
[Disaster Info Name] :ALOS-2 PALSAR-2,L1.1,P113F7110,A, 36.2,Jan. 24, 2017
[Disaster Info Type] :ALOS(Data)
[Disaster Info File Format] :Standard-Data
[Disaster Info File Size] :1945600[KByte]
[Disaster Info Observation Date] :Jan 24, 2018 2:40:00 PMUT [Disaster Info Summary]
ALOS-2 PALSAR-2,L1.1,P113F7110,A, 36.2,Jan. 24, 2017 This is one of the original files divided in two.
[Northernmost Point Long] :-3.237[deg]
[Southernmost Point Long] :-3.975[deg]
[Easternmost Point Lat] :144.871[deg]
[Westernmost Point Lat] :144.155[deg]
[Disaster Info URL]
http://sentinel.tksc.jaxa.jp/sentinel2/thumbnailEmob.jsp?subset_name=Emergency+Observation&emobRequestDetailAction.requestId=ERPGND00001
[Disaster Data URL]
<https://sentinel.tksc.jaxa.jp/sentinel2/webresources/thumbnailEmob/download?dataId=JPJXisis0001201801250004>



THANK YOU