

End User Enhancement

Manzul K. Hazarika, Ph.D.

Director, Geoinformatics Center
Asian Institute of Technology (AIT)
manzul@ait.asia



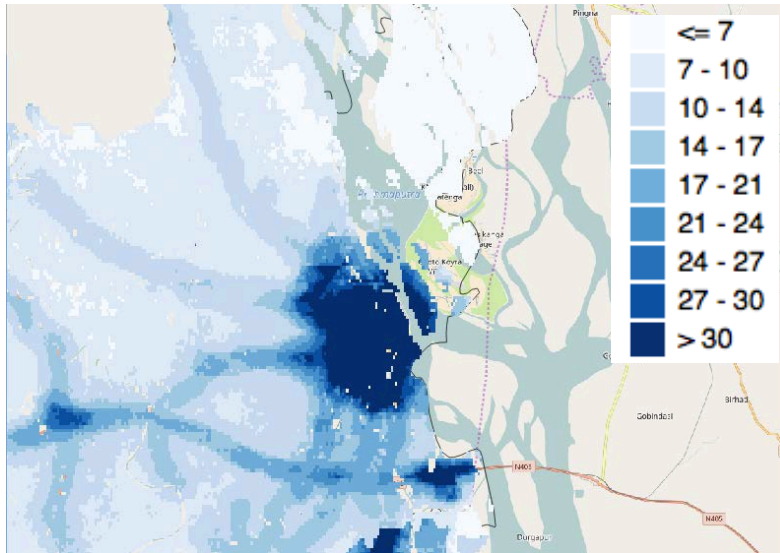
Activities for End User Enhancement

Clause No.	Purpose	Method
4.3.1-1-M	Assessment of User Needs and Requirements	<ul style="list-style-type: none">▪ Document: Develop user feedback form
4.3.1-2-M	Empower Local Agencies through Improving Knowledge and Providing user friendly tools	<ul style="list-style-type: none">▪ QGIS plugin - Emergency Mapper▪ Generate VAPs for large scale disaster events▪ Develop mobile phone app for crowd sourcing
4.3.1-4-M	Capacity Building through e-Learning System	<ul style="list-style-type: none">▪ Share relevant lecture and training material.

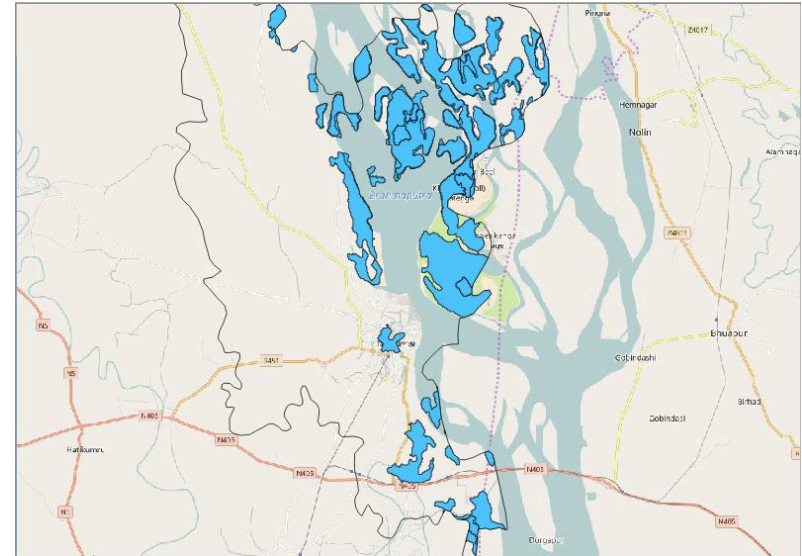
QGIS Plugin - Emergency Mapper

- Plugin (Emergency Mapper) was developed for **QGIS**;
- It is created to be utilized by **local DRM workers** to quick data analysis;
- Takes advantage of **open source data** in combination with **local data**;
- Use Sentinel Asia **Value Added Products** to analyse affected buildings and populations.

Affected Population

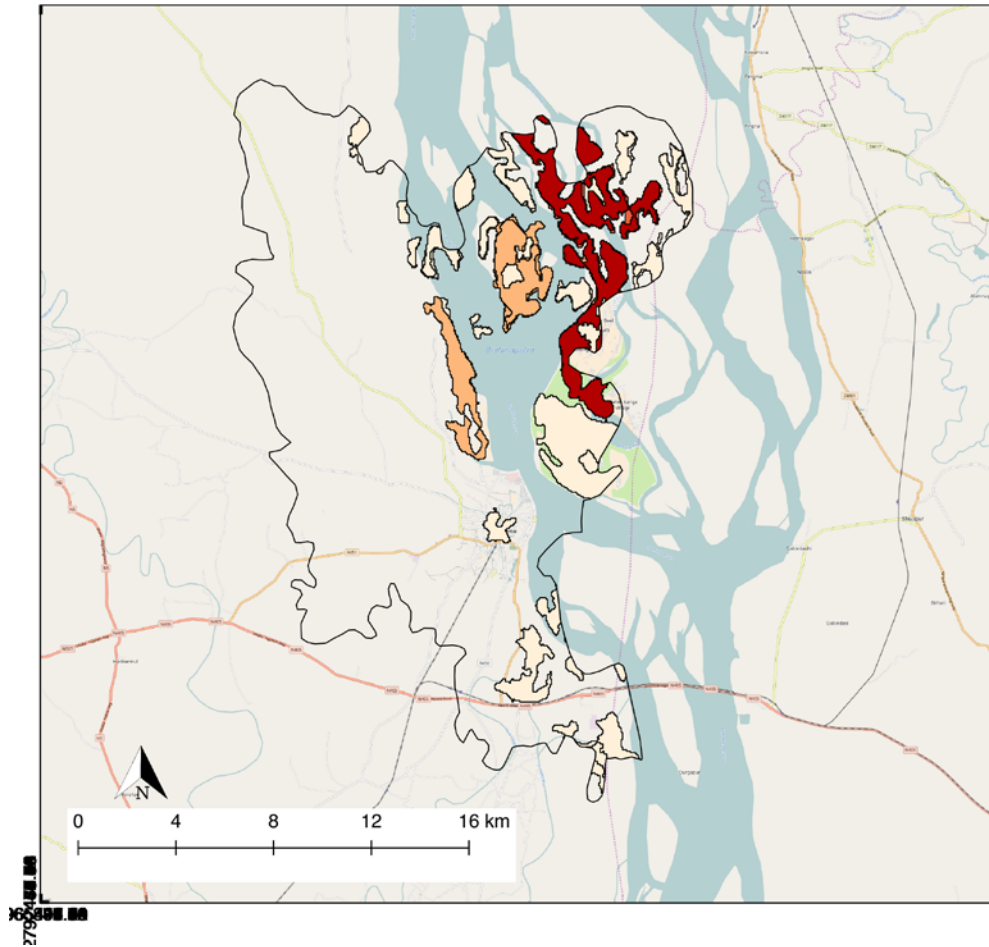


Sirajganj population from Worldpop



Flood in Sirajganj, Bangladesh 2016

Flood Impact Map - affected population



Sirajganj Affected Population

Legend

Affected Population	
2 - 186	
186 - 369	
369 - 552	
552 - 736	
Sirajganj S.	
OpenStreetMap	

Affected Population

2 - 186
186 - 369
369 - 552
552 - 736

Analysis information

Time	2017-07-18 12:44:25
Note	This map was created by Emergency Mapper QGIS plugin
Result	Total affected population 3673

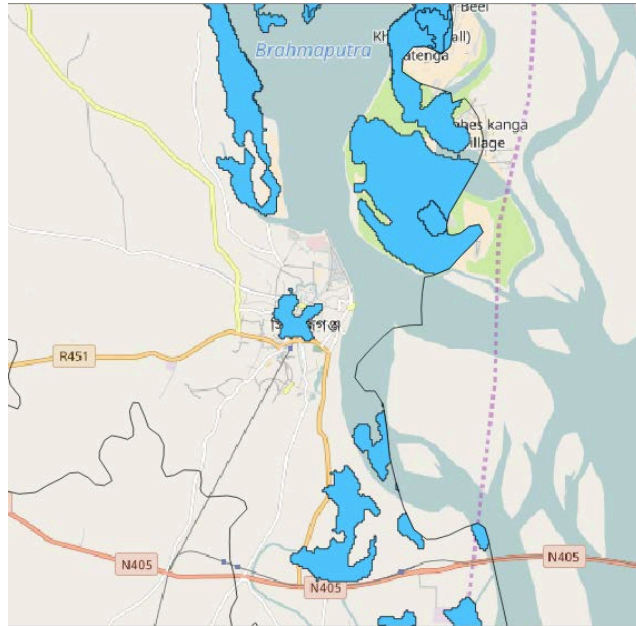
Total affected population 3673

Disclaimer

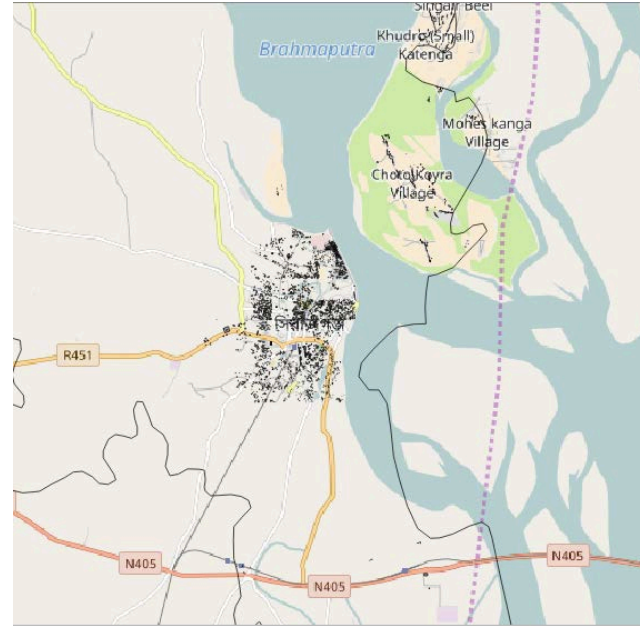
Data © OpenStreetMap Contributors



Affected Building

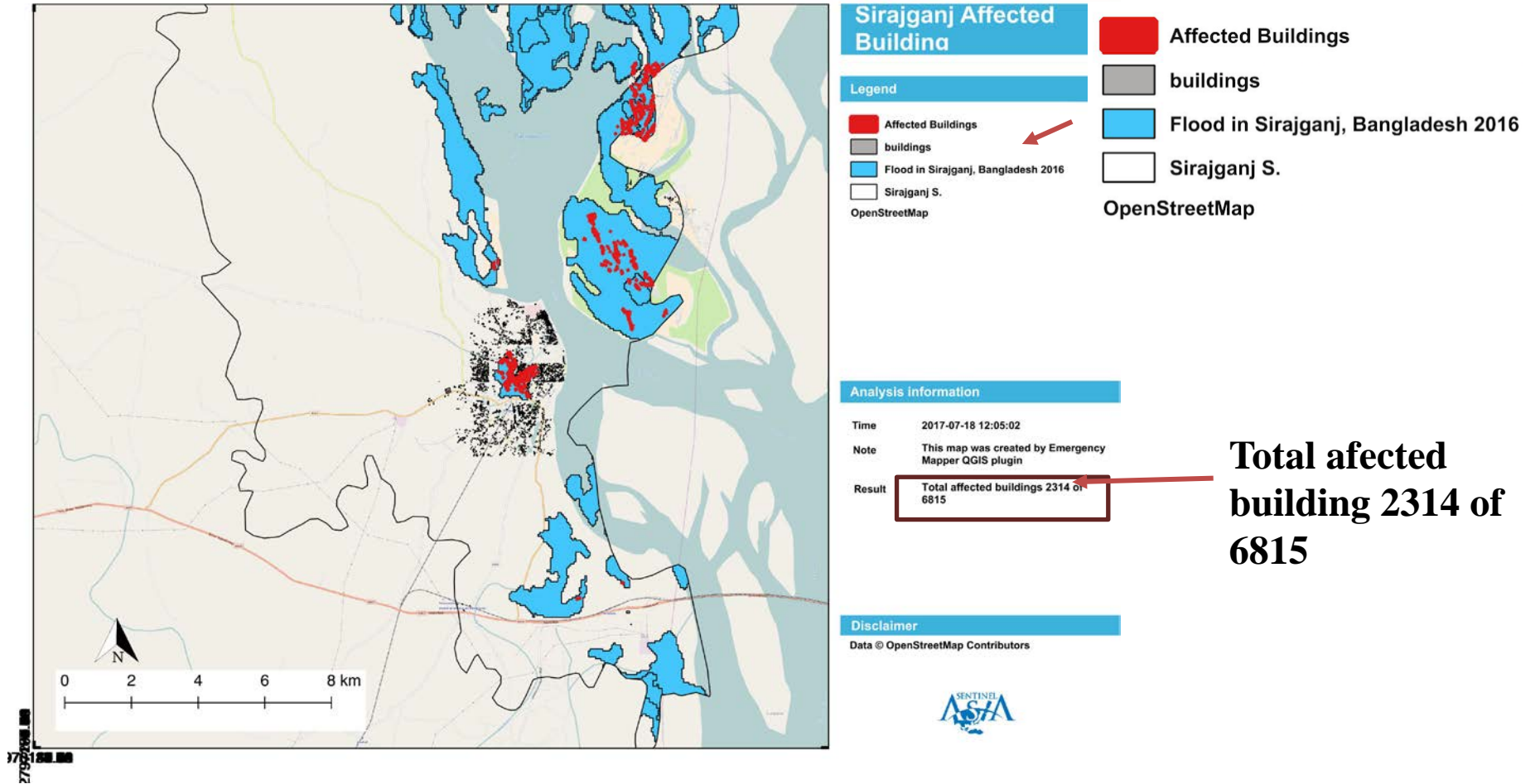


Flood in Sirajganj, Bangladesh 2016



Buildings in Sirajganj from OSM

Flood Impact Map - affected buildings



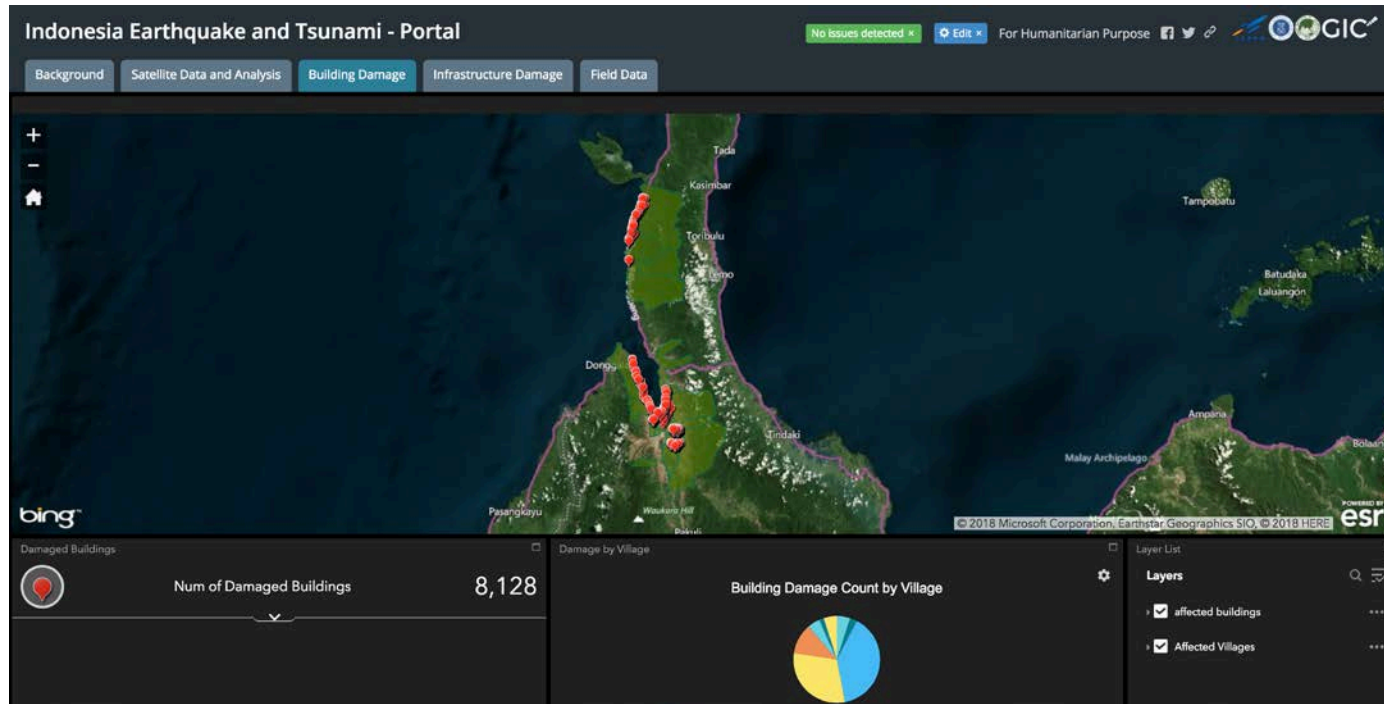
Generate VAPs for large scale disasters - Sulawesi

60 VAPs were created:

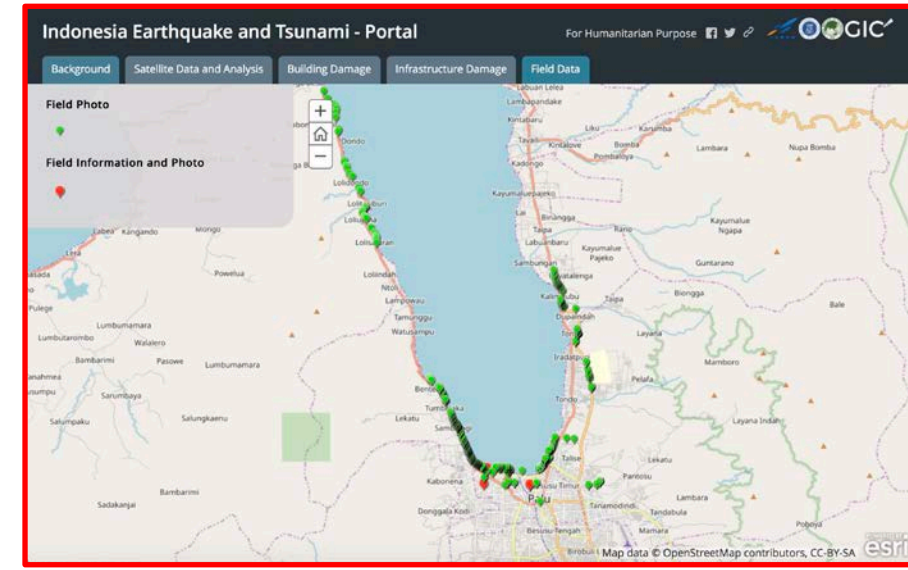
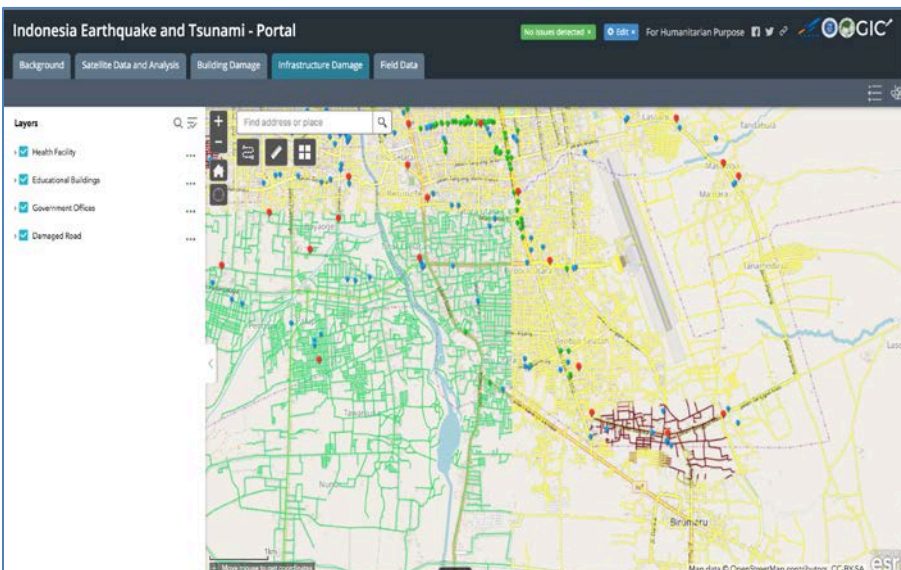
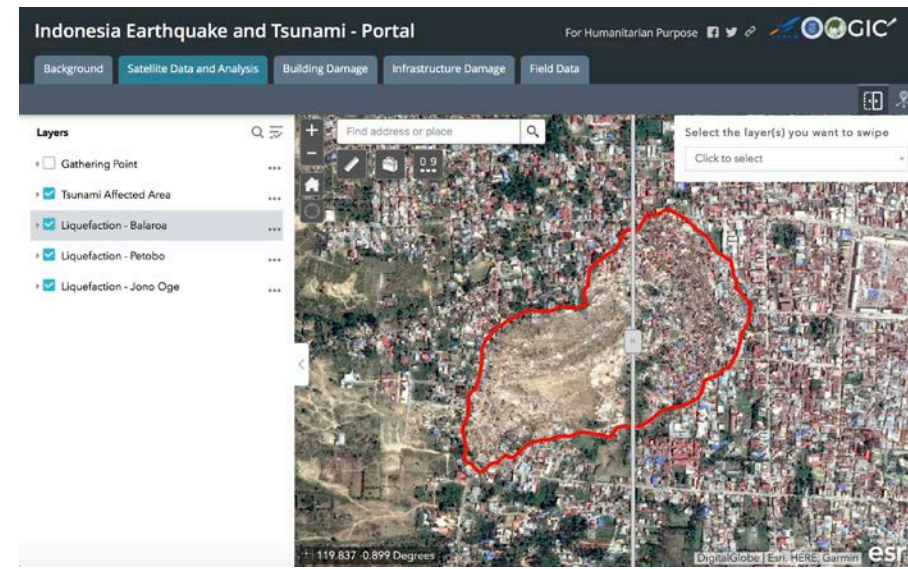
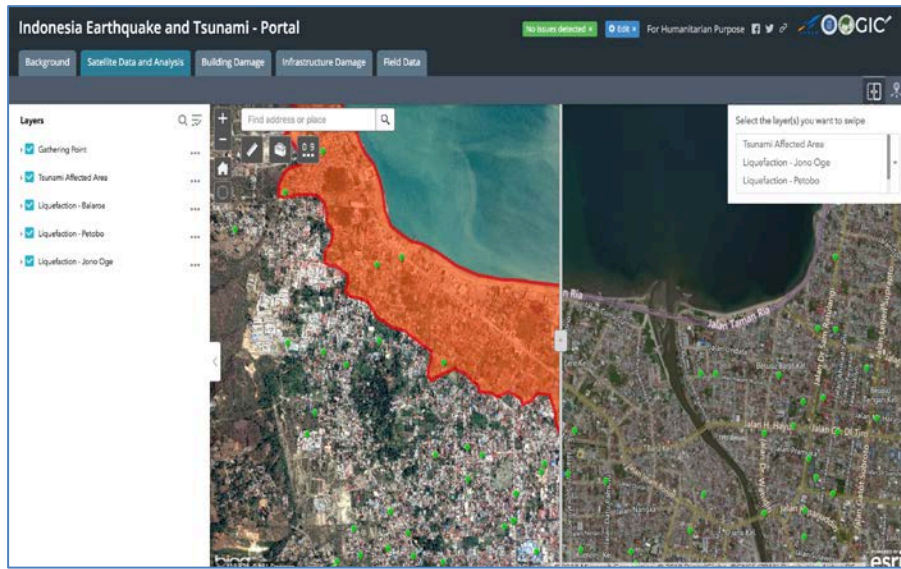
- 22 VAPs for Sentinel Asia
- 38 VAPs for IDC



An ArcGIS online platform was developed for wider dissemination



Value Added Products (VAPs)



Mobile Phone App. for Crowd Sourcing

Developed a Mobile App for Survey using DRM Survey and Kobo toolbox

Damage Assessment- I

Describe the types of tree damage observed (if any):

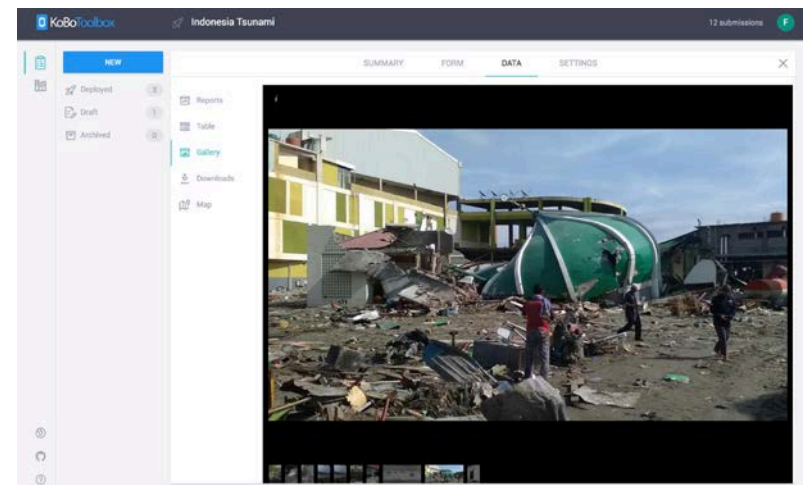
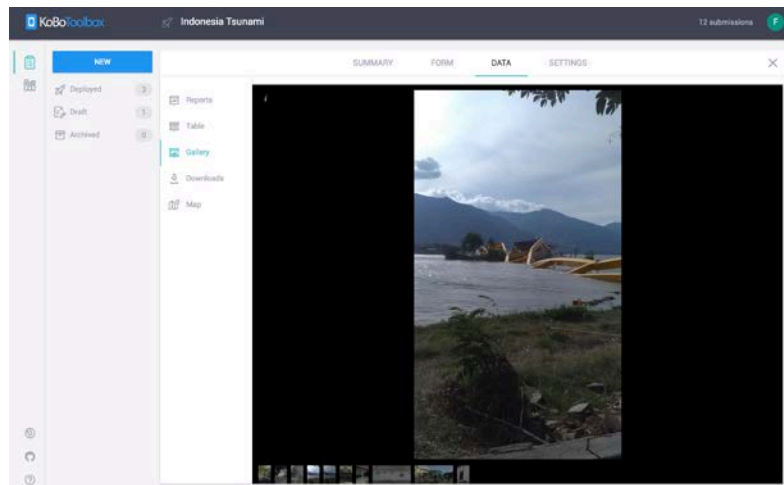
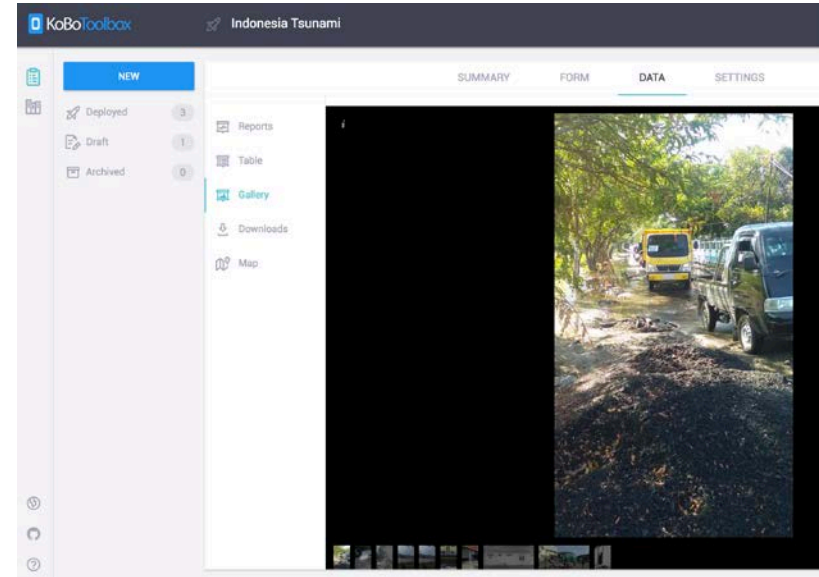
- Small limbs broken
- Tree less than 2" diameter broken (5 cm)
- Trees from 2" to 8" diameter broken (5-20 cm)
- Trees greater than 8" diameter broken (20 cm)
- Trees uprooted
- Total destruction of vegetation

What percentage of buildings or structures were damaged by the wave in your locality?

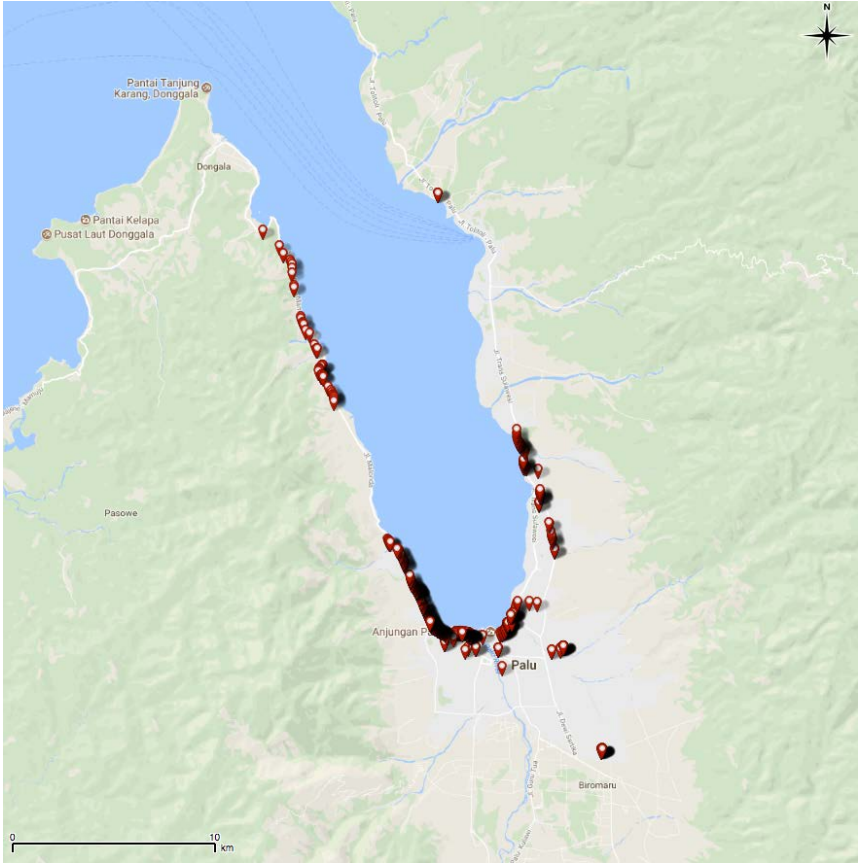
- None
- Few (about 5%)
- Many (about 50%)
- Most (about 75%)

Check the approximate age of the majority of damaged buildings or structures:

- Built before 1945
- Built between 1945 and 1965
- Built between 1965 and 1980



Field Survey - Locations



Field Survey - Geotagged Photographs



- Around 400 geo-tagged photos have been collected in Palu, Sigi and Donggala.

Partnership with Local/International Organizations

- Partnerships with **local/international** humanitarian organizations were established;
- Field survey was conducted with the help of **local volunteers**.



Daily morning meeting with the volunteers



Meeting with volunteers from World Central Kitchen



Partner from LAZ Al-Azhar



Participatory mapping with local people

Thank you for your kind attention

A thick, blue, brushstroke-style underline that spans the width of the text above it. The stroke is slightly irregular, with a soft, painterly edge, and is positioned directly beneath the text.