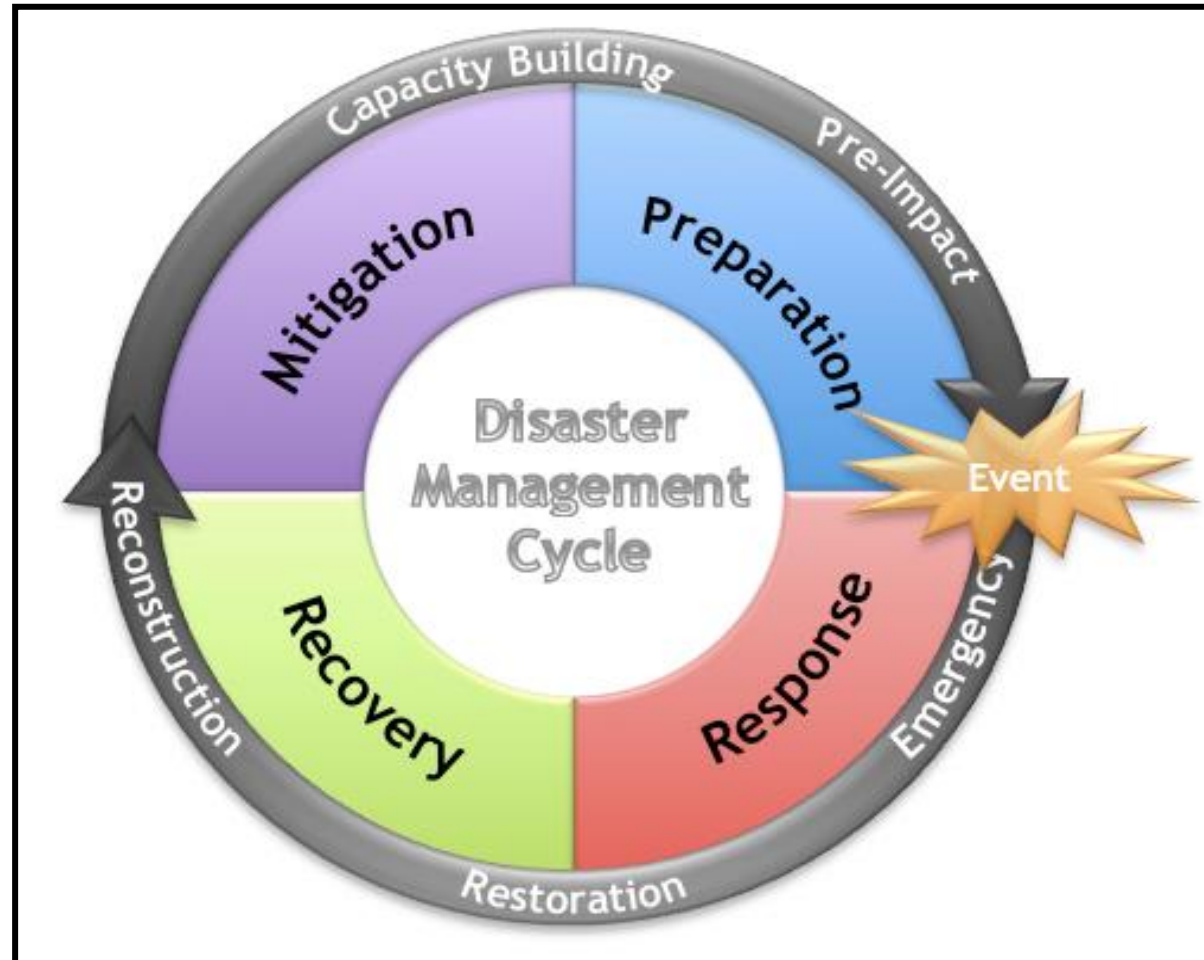


7th Joint Project Team Meeting of Sentinel Asia 12-14 November, 2019

BANGKOK,
THAILAND

OVERVIEW OF DISASTER MANAGEMENT IN FIJI



Sentinel Asia in Fiji



- Has always been responsive when it came to requests from the Pacific.
- Satellite imagery has been shared with us for further analysis using file sharing platforms such as dropbox.
- JAXA station initially set up to assist with this at the Fijian Government Information Technology & Communication (ITC) centre has not been maintained in recent years.

SOP FOR REQUESTING AND ACCESSING IMAGERY

1. Submit request to JAXA and ESCAP by email informing of pending situation (pre-event) or of a situation (post).

Emergency Observation Request (EOR) form submitted to Sentinel Asia node, ADRC.

- JAXA also receives emergency observation requests sent to the International Disaster Charter via UNOSAT.

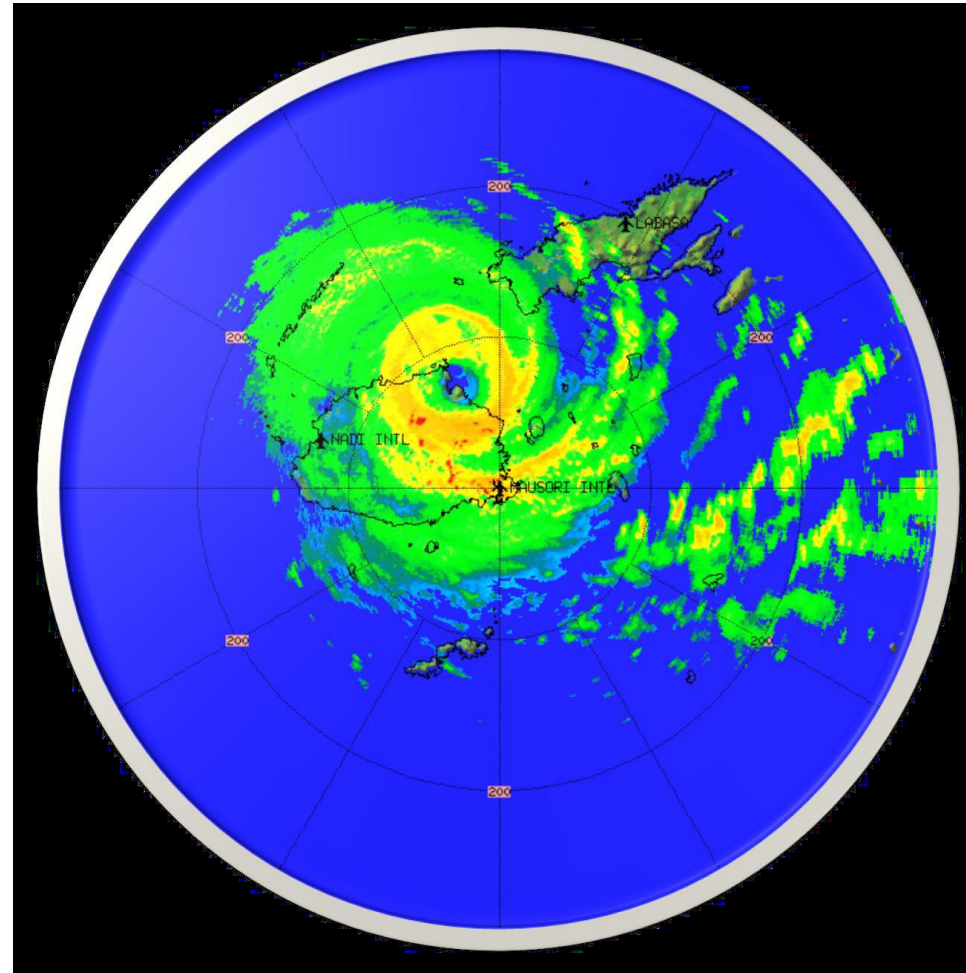
2. JAXA/ESCAP and ADPC contacts Pacific Community (SPC) once data is ready for download.

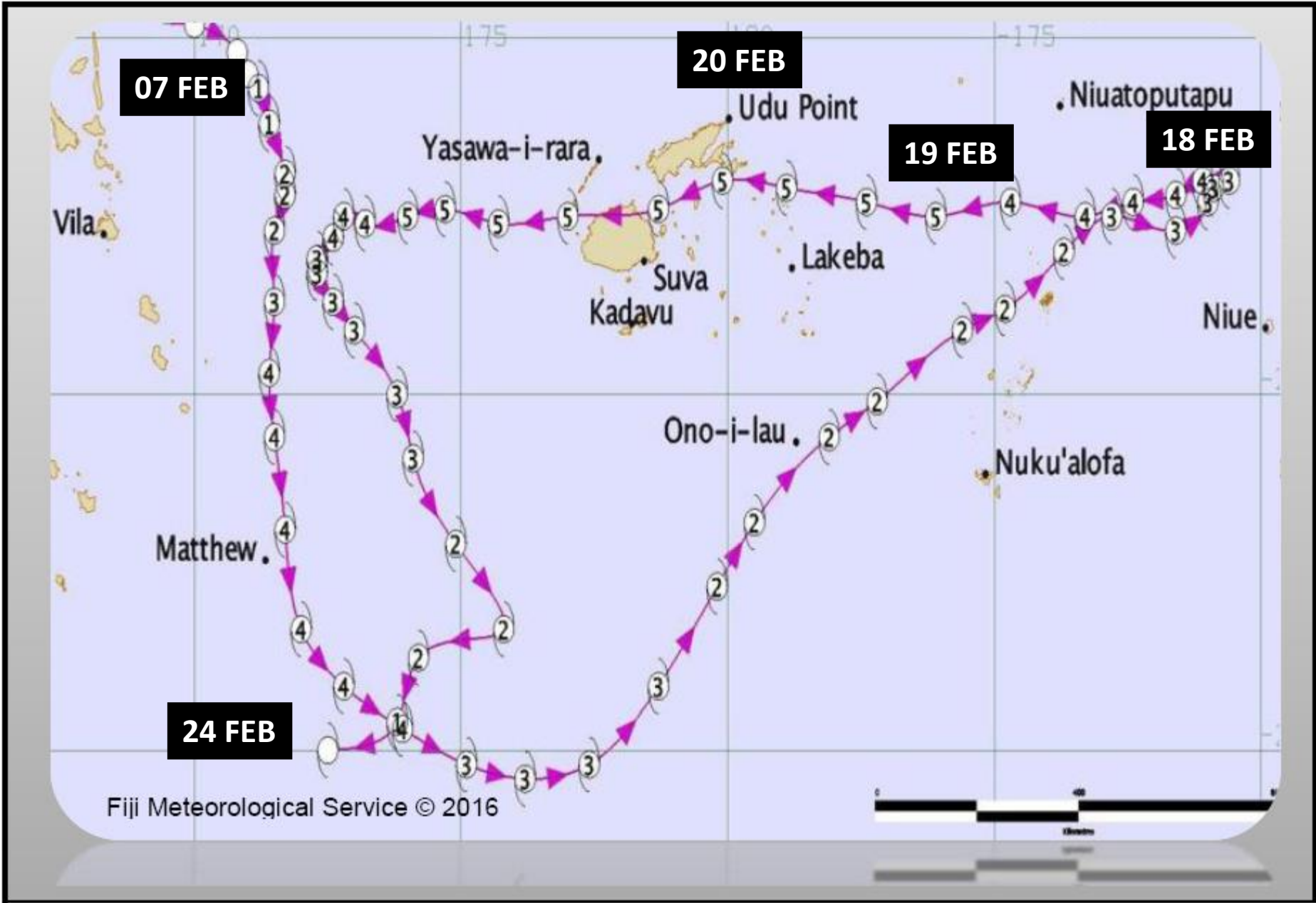
3. Imagery downloaded by SPC and NDMO and distributed as required.

Severe Tropical Cyclone Winston

Most powerful cyclone to affect Fiji on both the Australian tropical cyclone scale and the Saffir-Simpson scale

First recorded Category 5 system to make landfall on the northeast coast of Viti-Levu (Fiji)





In Numbers

44

deaths

AFFECTED

540,000

60,000 people
displaced

60 days

Declaration

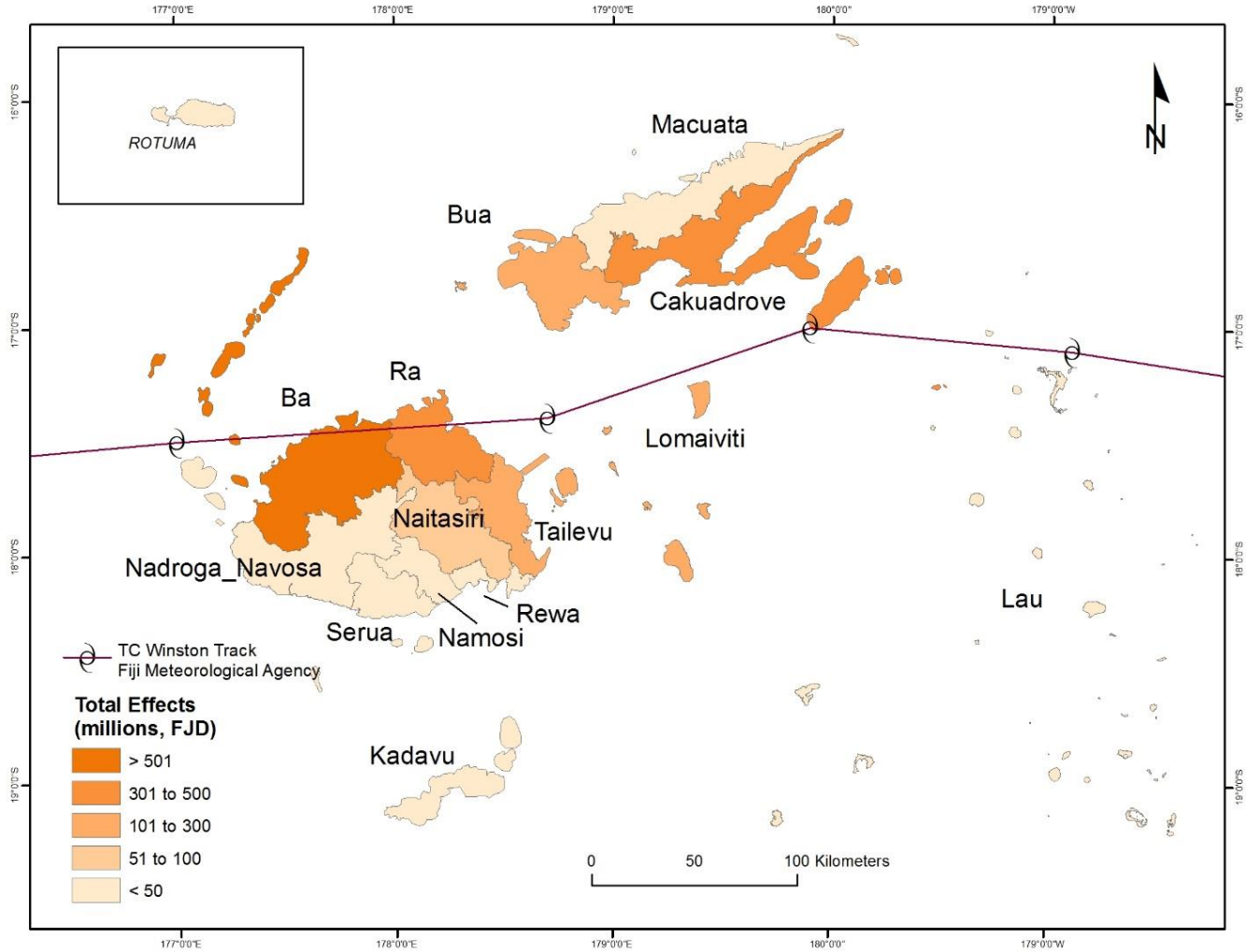
State of Emergency

5 Hazard
Impacts

- Wind
- Storm Surge
- Flooding
- Coastal erosion
- Landslides

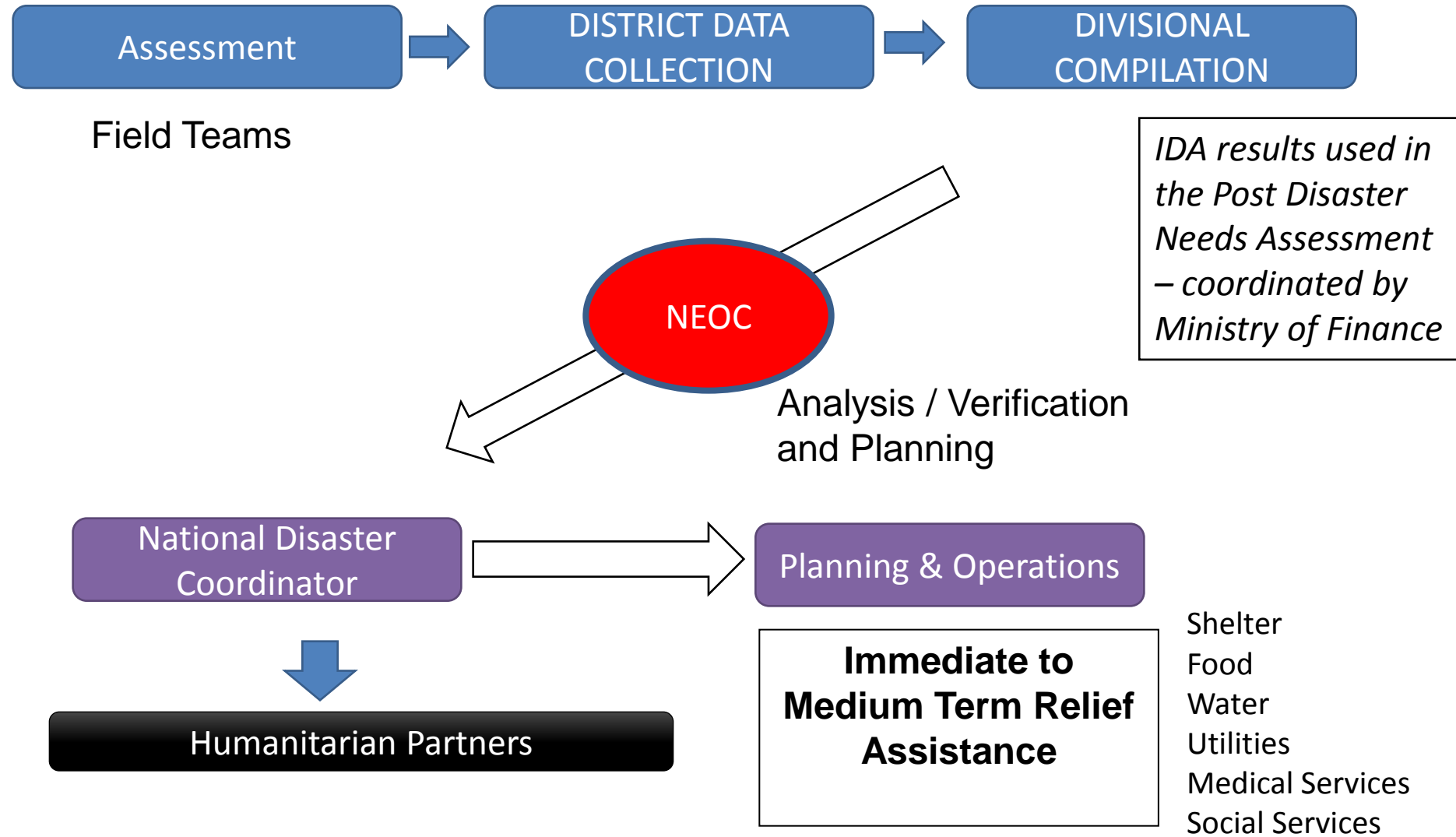
1.99 billion F\$
Damage and Losses

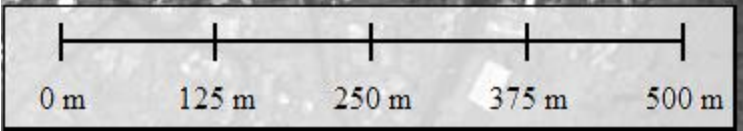
Distribution of TC Winston Impacts

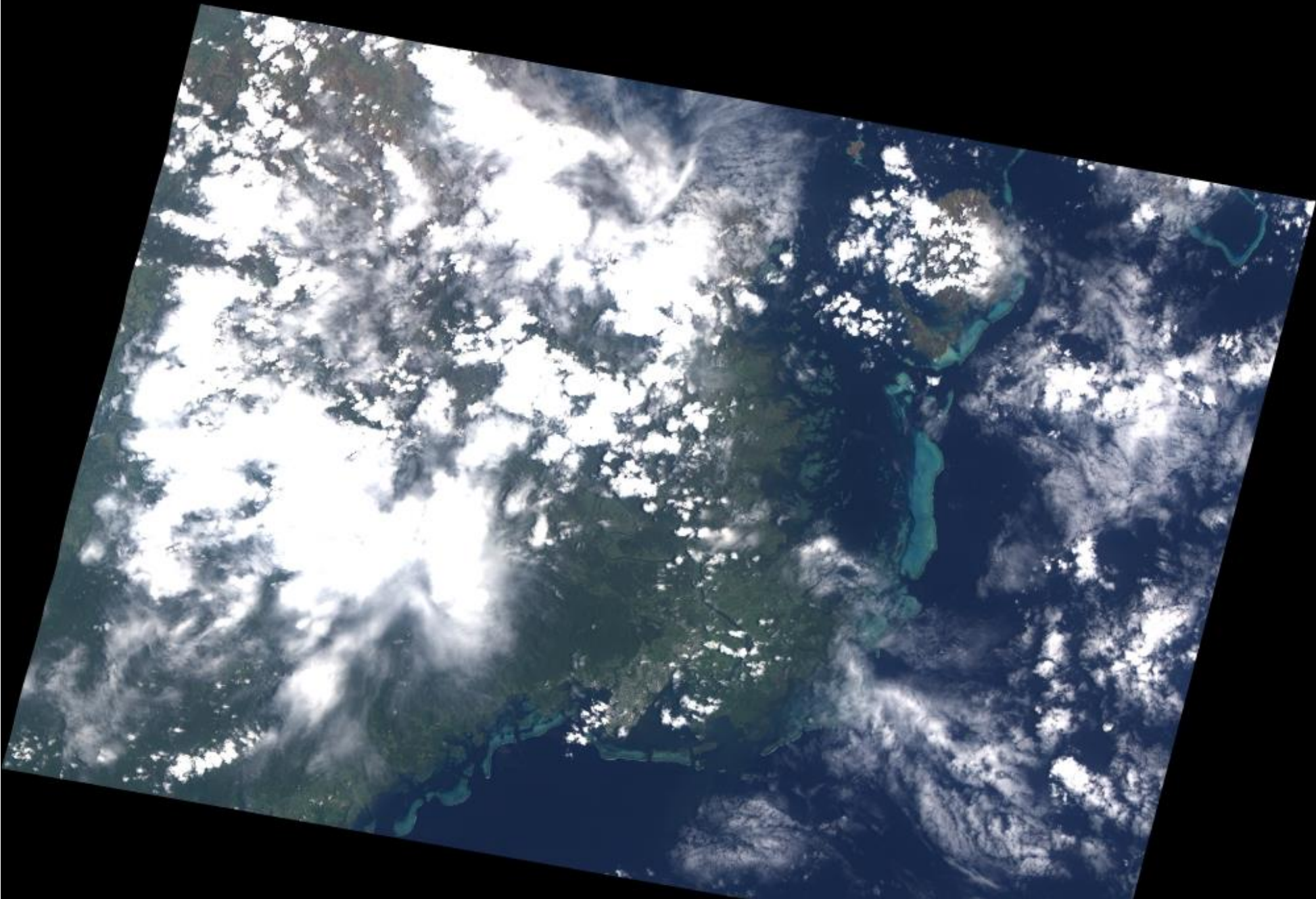


Estimated value of disaster effects from TC Winston in Fiji is F\$1.99 billion (US\$0.9 billion),
F\$1.29 billion (US\$0.6 billion) in damage
F\$0.71 billion (US\$0.3 billion) in losses

Initial Damage Assessment







NAMAVU VILLAGE, KORO



NACAMAKI, KORO

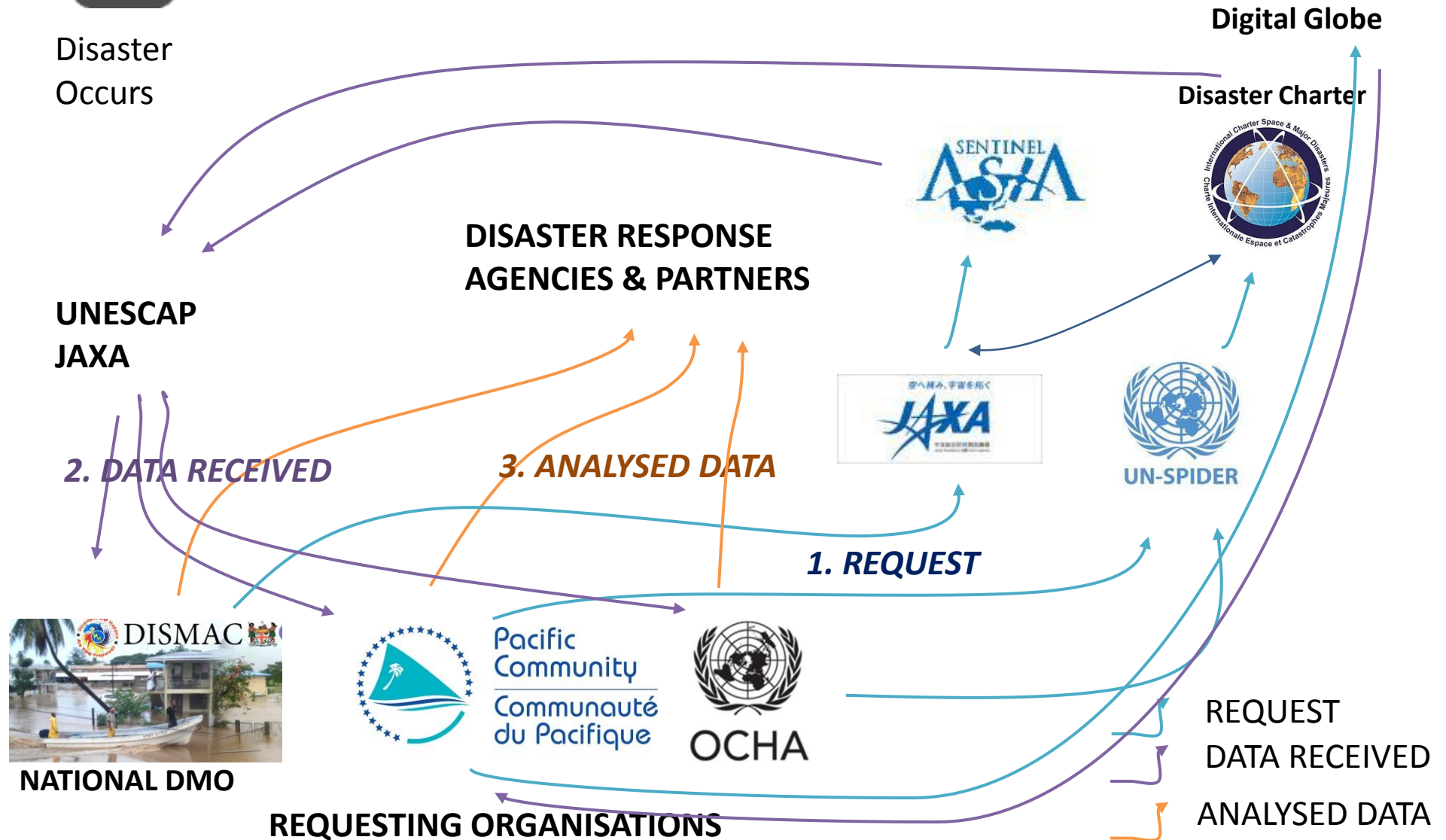


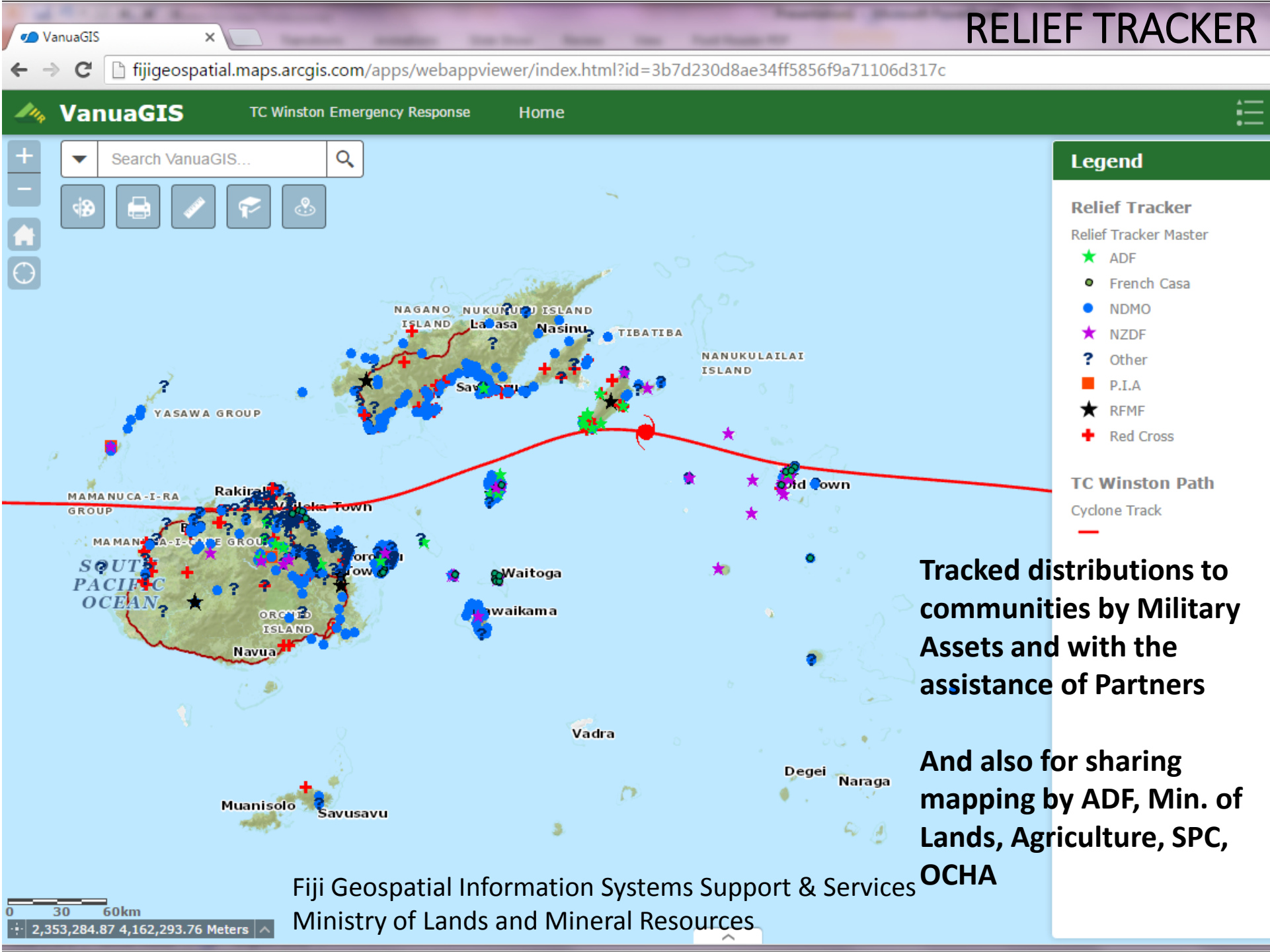
SOSO, YASAWA





PROCESS – POST DISASTER IMAGERY





Tracked distributions to communities by Military Assets and with the assistance of Partners

And also for sharing mapping by ADF, Min. of Lands, Agriculture, SPC, OCHA

Summary

- Importance of collaboration between partners and Government to share information
- Recommendation for data sharing given by National Disaster Council
- Private sector support to provide satellite imagery, undertake rapid technical assessments and share data collected
- Information management support across all of the humanitarian clusters, civil-military coordination, Division to NEOC and within the NEOC teams (Planning and Operations)
 - assessments, satellite and aerial imagery interpretation, GIS mapping, online data services, analysis, operational planning, Post Disaster Needs Assessment (quantifying the economic losses of TC Winston)



THANK YOU