

**7th Joint Project Team Meeting of Sentinel Asia (JPTM2019)**  
**at Bangkok, Thailand**  
**12-14 Nov 2019**

**Disaster Risk Management**  
**in Lao PDR**

**Present by: Phonesavanh Saysompheng**

**Deputy Director Disaster prevention and Risk Reduction Division**

**Secretariat of National Disaster Prevention and Control Committee, Lao PDR**

E-mail: [phone\\_kung@yahoo.com](mailto:phone_kung@yahoo.com)

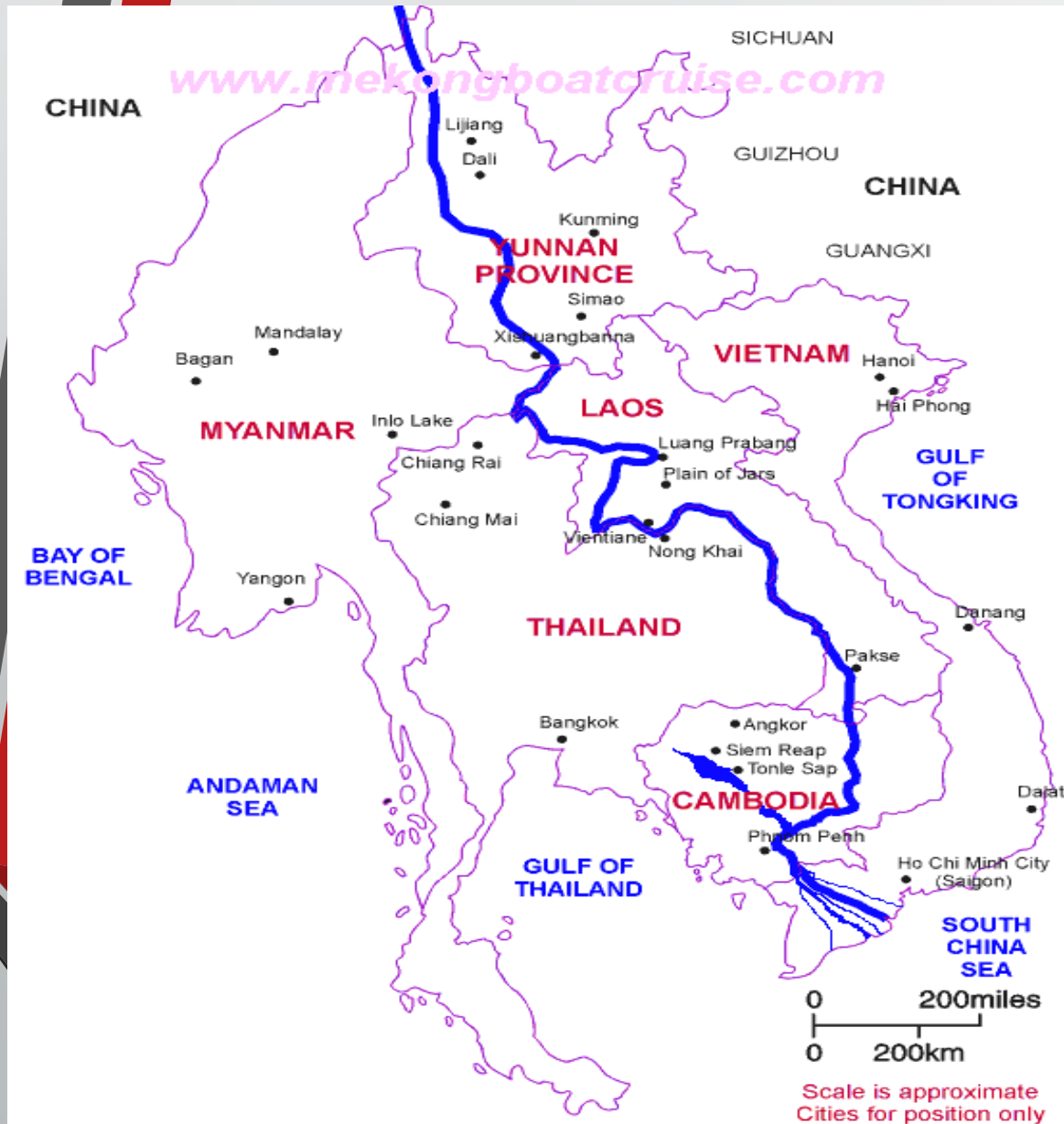
[saysomphengp@gmail.com](mailto:saysomphengp@gmail.com)



# Outline

1. Introduction
2. Hazards and Disaster in Lao PDR
3. DRM Framework in Lao PDR
4. Application of Satellite imagery for disaster management
5. Current issues

# Introduction



? Landlocked country

? Three geographical regions:  
Northern Central and Southern

? Population of 6,5 million

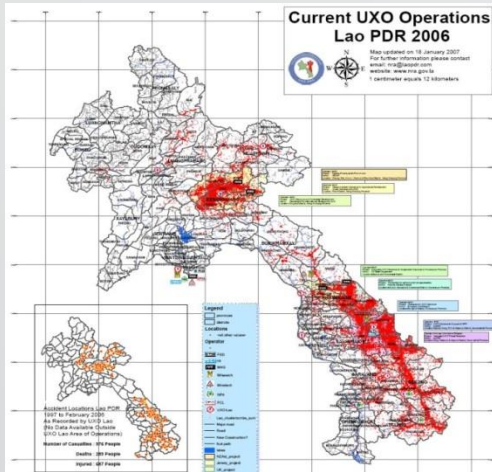
? Area of 236,800 square Km; 70%  
mountainous areas 30% lowland  
(Population concentrated &  
economically a 80% of population  
depends on the subsistence  
forming

? MEKONG River Length:1.865 km  
( flow through Laos)

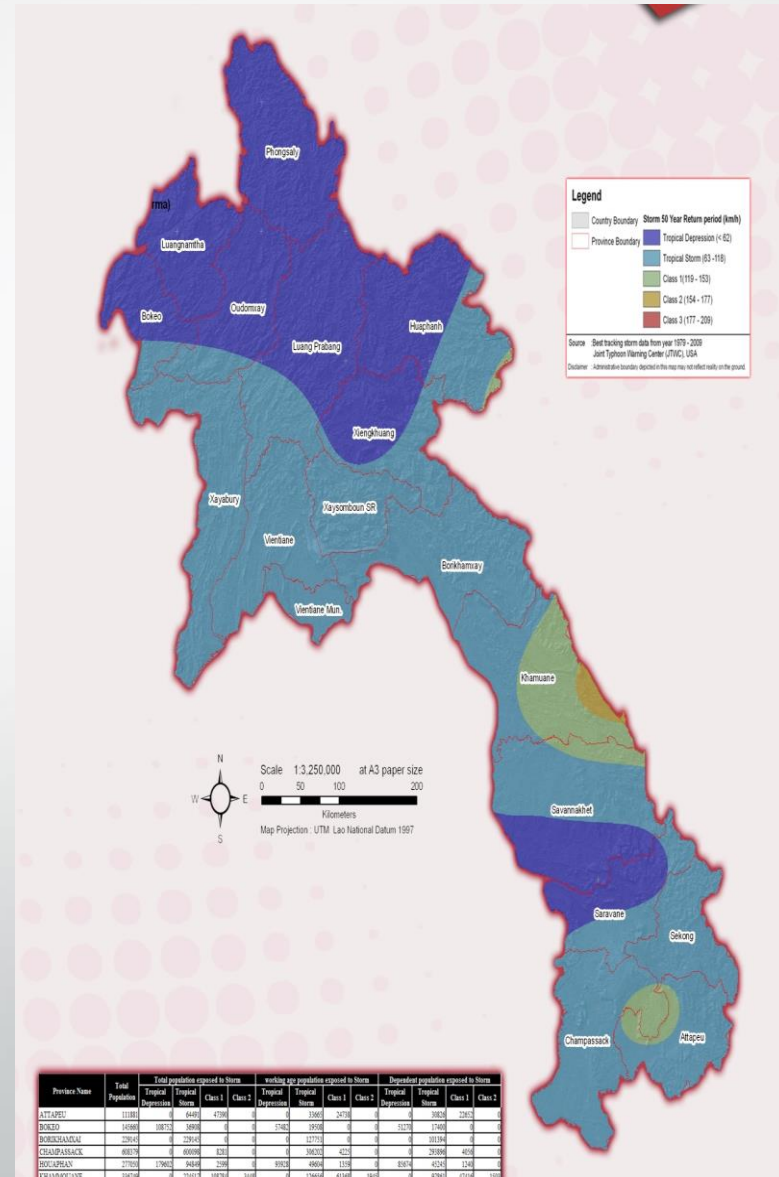
Two seasons: Dry and Wet

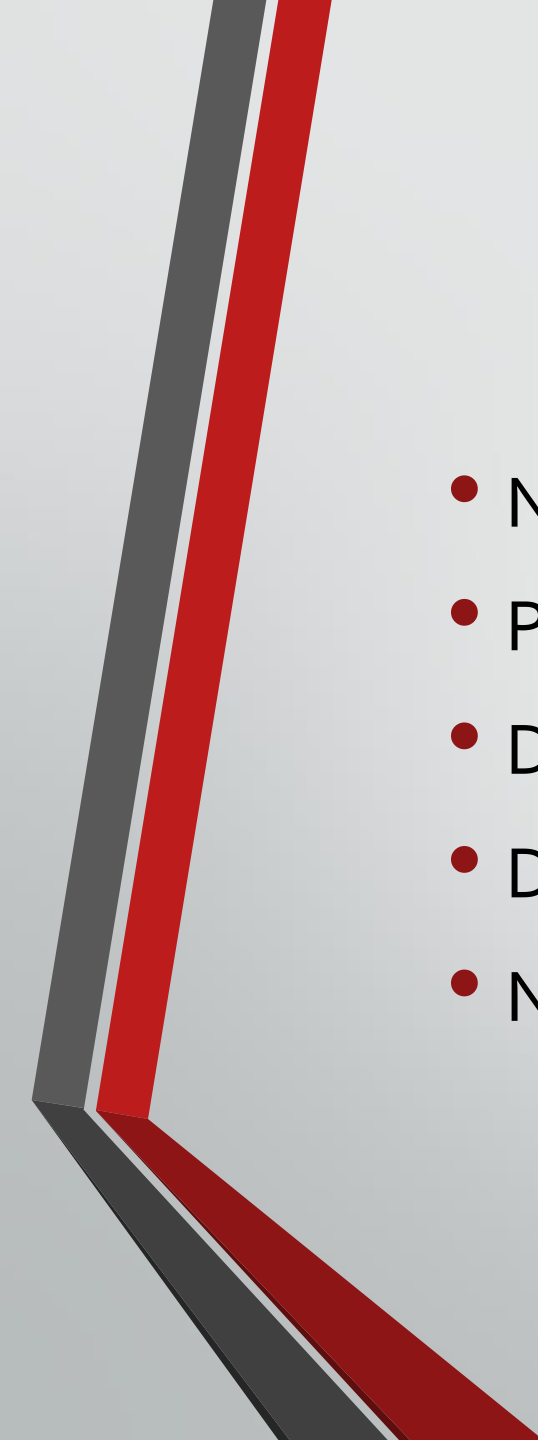


# Hazards and Disaster in Lao PDR



- Flood
- Drought
- Storm
- Earthquake
- Epidemic
- UXO
- Landslide





# National Disaster Management Framework in Lao PDR

- National Disaster Prevention and Control Committee
- Provincial Prevention and Control Committee
- District Prevention and Control Committee
- DM Focal Point at all levels
- National Strategy Plan on DRM

# DPCC Diagram

**Deputy Prime Minister**

National Disaster Prevention and Control Committee (NDPCC)

Ministry Focal Point (MFP)

**NDMO**

Provincial Focal Point in Unit (PFPU)

Provincial Disaster Prevention and Control Committee (PDPCC)

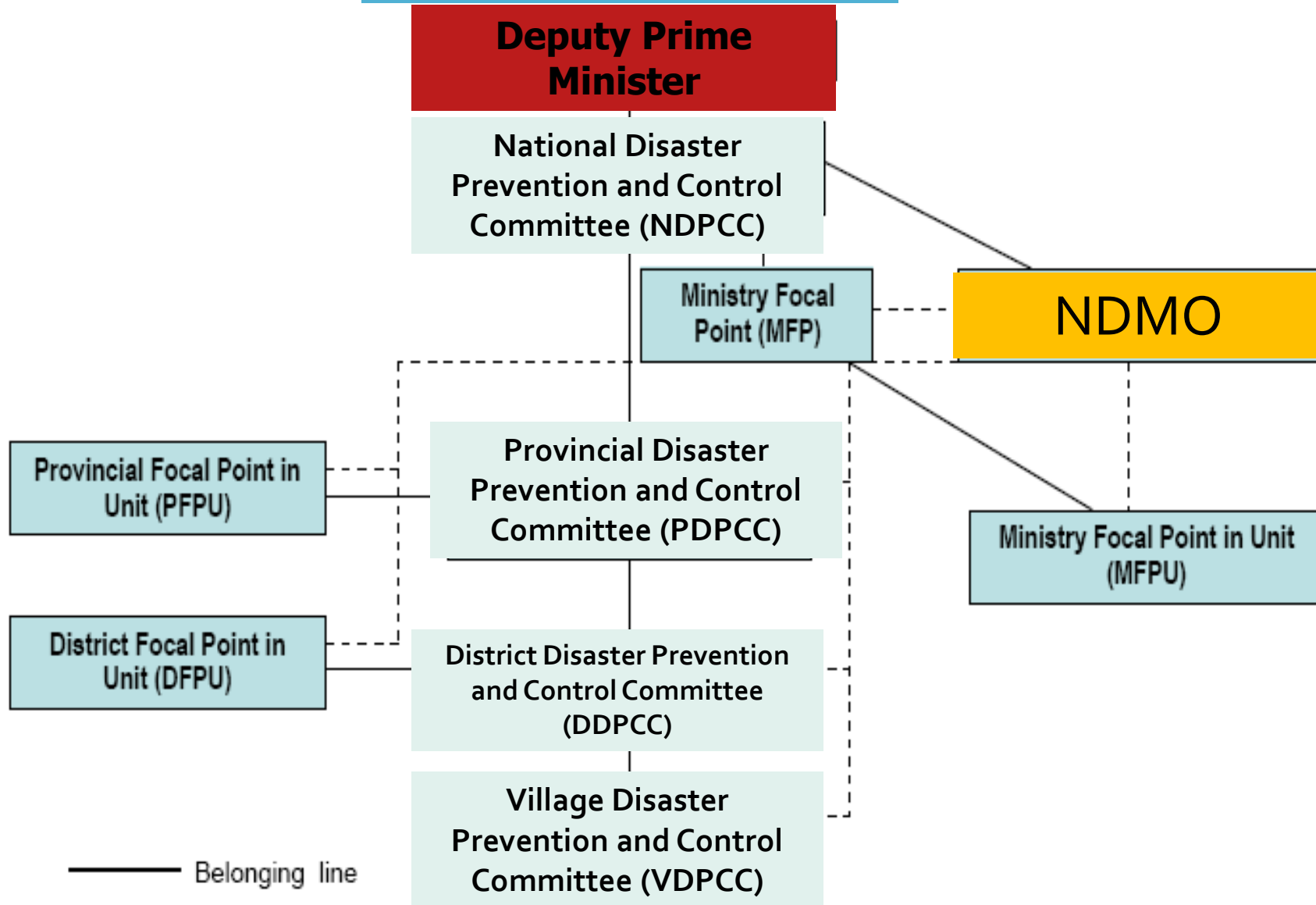
Ministry Focal Point in Unit (MFPU)

District Focal Point in Unit (DFPU)

District Disaster Prevention and Control Committee (DDPCC)

Village Disaster Prevention and Control Committee (VDPCC)

— Belonging line  
- - - - - Coordination line







## *Application of Satellite imagery for disaster management – Con't*

- Search and Rescue Operation Planing
- Analysis of a composite severity in a scale level
- Overlay with other indicator – in the case of Lao PDR needed to use with UXO map



# Current issues

- Lack of implementation tools ( hardware and software)
- The ability to analyze photos still has to rely on professionals,
- Photographs will need to be requested and wait for the satellite cycle, sometimes the water has partially subsided



**khop chai lai lai !!!**

**ຂອບໃຈ**